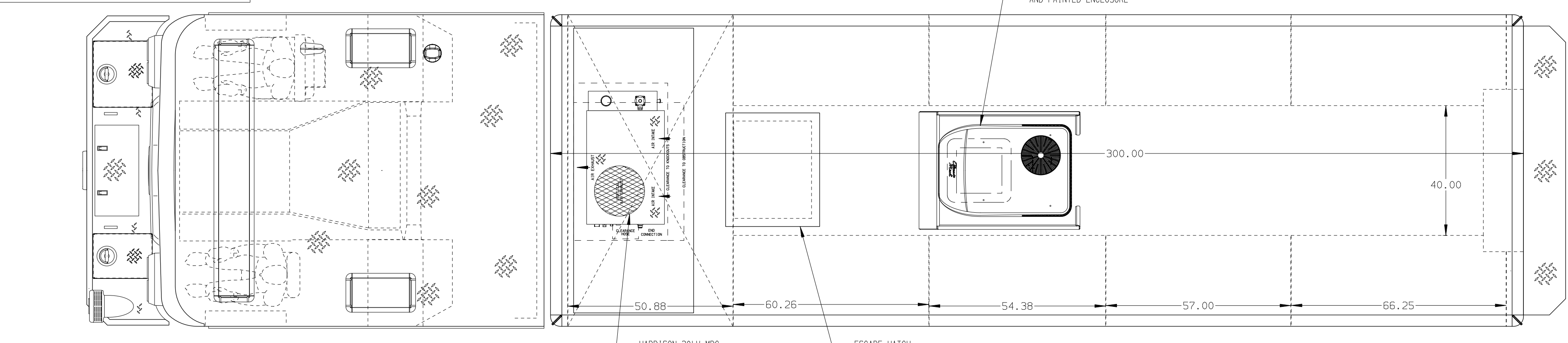
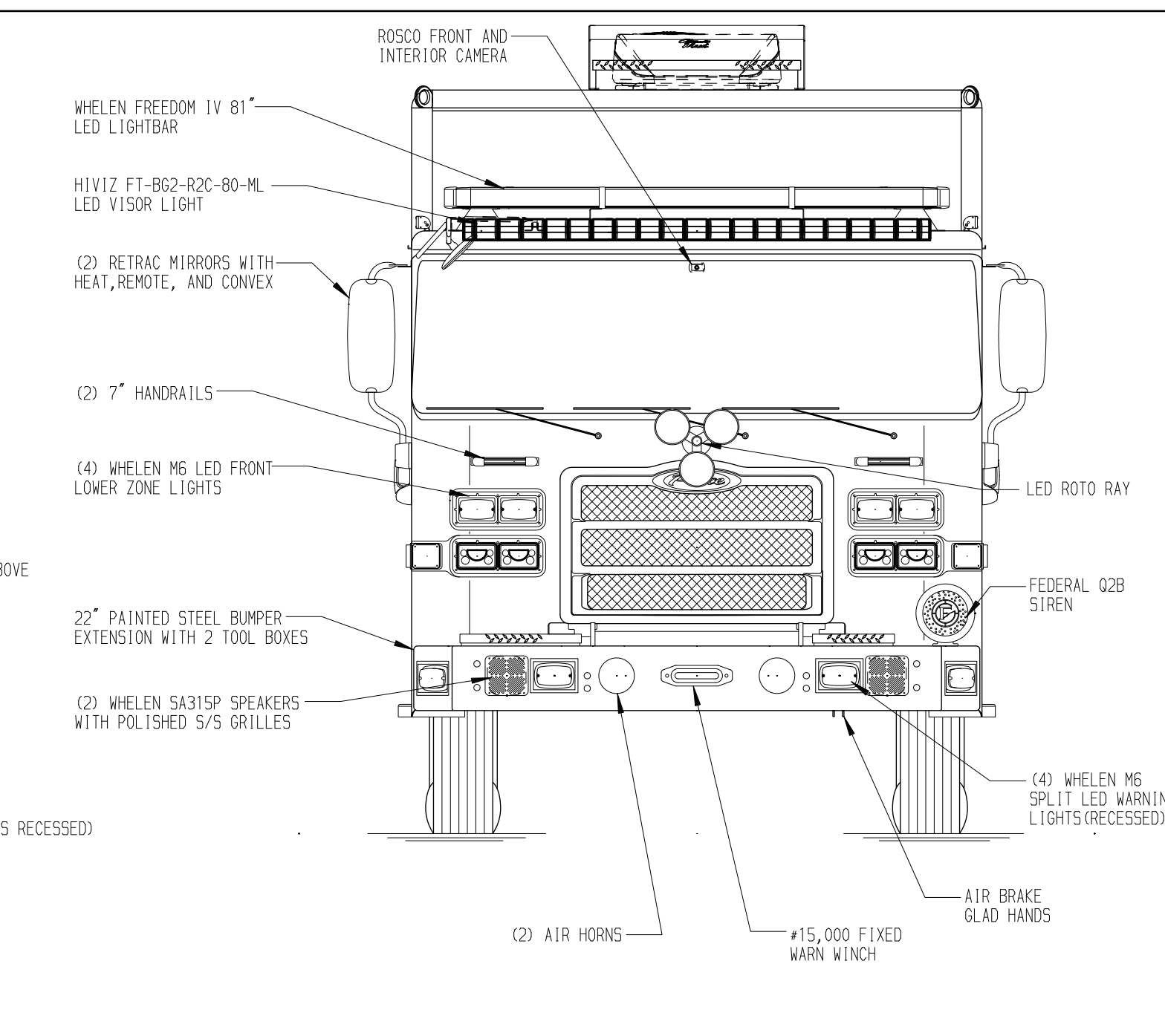
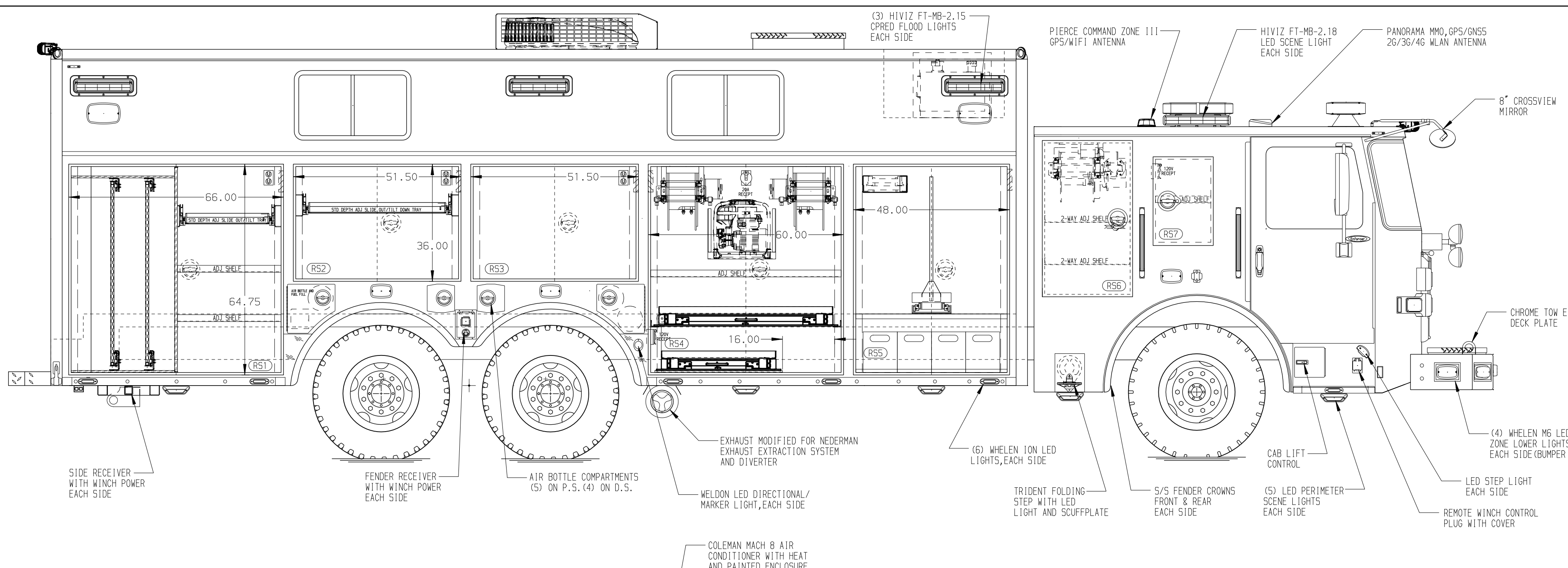
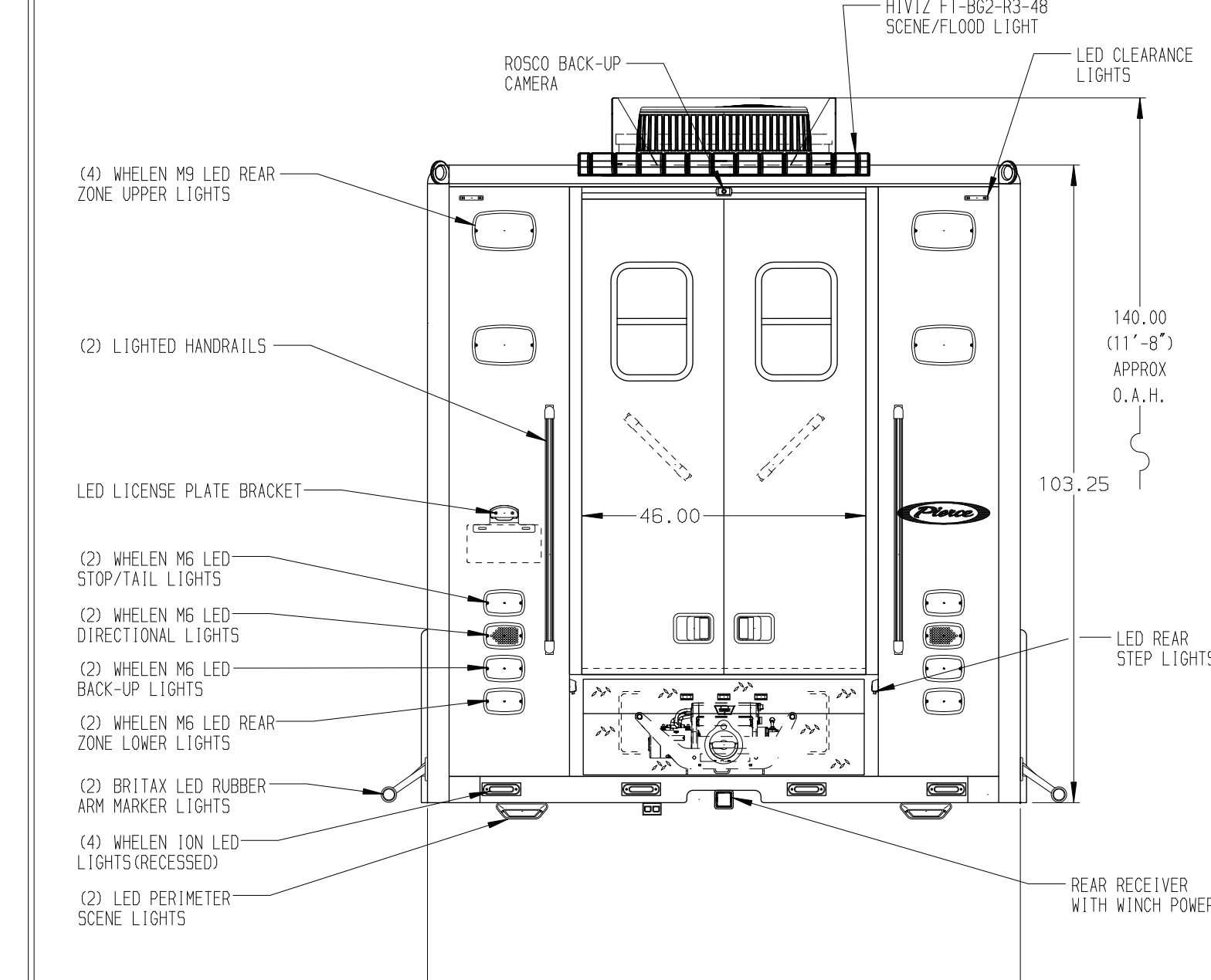


- RIGHT SIDE COMPARTMENTS CONTAIN THE FOLLOWING:**
- COMPARTMENT RS1 CONTAINS:**
 - (2) STD DEPTH ADJ SHELVES
 - (1) STD DEPTH ADJ SLIDE OUT/TILT TRAY
 - (2) STD DEPTH SLIDE OUT TOOLBOARDS WITH DUAL SLIDES
 - (1) VERTICAL COMPARTMENT DIVIDER
 - (1) 20A, 120V DUPLEX RECEPTACLE
 - (1) 12V BLUE SEA FUSE BLOCK
 - COMPARTMENT RS2 CONTAINS:**
 - (1) STD DEPTH ADJ SLIDE OUT/TILT TRAY
 - (1) 20A, 120V DUPLEX RECEPTACLE
 - (1) 12V BLUE SEA FUSE BLOCK
 - COMPARTMENT RS3 CONTAINS:**
 - (1) 20A, 120V DUPLEX RECEPTACLE
 - (1) 12V BLUE SEA FUSE BLOCK
 - COMPARTMENT RS4 CONTAINS:**
 - (1) SPECIAL DEPTH ADJ SHELF
 - (1) STD DEPTH ADJ ON-SCENE SLIDE OUT TRAY
 - (1) FIXED GUSSETED SHELF
 - (1) STD DEPTH ON-SCENE SLIDE OUT TRAY
 - (2) HYDRAULIC REELS WITH 100' OF HOSE EACH
 - (1) 20A, 120V DUPLEX RECEPTACLE
 - (1) 20, 240V T.L. RECEPTACLE
 - (1) 12V BLUE SEA FUSE BLOCK
 - COMPARTMENT RS5 CONTAINS:**
 - (1) 1/2 DEPTH ON-SCENE SLIDE OUT TRAY WITH TOOLBOARD
 - (1) HORIZONTAL FLOOR EXTENSION
 - (1) RACK FOR 10' FRESNO LADDER
 - (4) POLY TOOL BOXES
 - (1) 12V BLUE SEA FUSE BLOCK
 - PAC TRAC ON REAR WALL
 - COMPARTMENT RS6 CONTAINS:**
 - (2) 2-WAY ADJ SHELVES
 - 1/4" UPF POLY LINING ON COMPARTMENT FLOOR
 - (1) ELECTRIC CORD REEL WITH 200' OF 10/4 YELLOW CORD
 - (1) 6" PIKE POLE
 - COMPARTMENT RS7 CONTAINS:**
 - (1) ADJ SHELF
 - (1) 20A, 120V DUPLEX RECEPTACLE
 - (1) 12V BLUE SEA FUSE BLOCK



- LEFT SIDE COMPARTMENTS CONTAIN THE FOLLOWING:**
- COMPARTMENT LS1 CONTAINS:**
 - (1) STD DEPTH ADJ SLIDE OUT/TILT TRAY W/NOTCH
 - (1) STD DEPTH ADJ SHELF
 - (1) 20A, 120V DUPLEX RECEPTACLE
 - (1) 12V BLUE SEA FUSE BLOCK
 - COMPARTMENT LS2 CONTAINS:**
 - (1) 20A, 120V DUPLEX RECEPTACLE
 - (1) 12V BLUE SEA FUSE BLOCK
 - (1) VERTICAL COMPARTMENT DIVIDER
 - (1) STD DEPTH ADJ SLIDE OUT/TILT TRAY
 - COMPARTMENT LS3 CONTAINS:**
 - (1) 20A, 120V DUPLEX RECEPTACLE
 - (1) 12V BLUE SEA FUSE BLOCK
 - COMPARTMENT LS4 CONTAINS:**
 - (1) SPECIAL DEPTH ADJ SHELF
 - (1) STD DEPTH ADJ ON-SCENE SLIDE OUT TRAY
 - (1) FIXED GUSSETED SHELF
 - (1) STD DEPTH ON-SCENE SLIDE OUT TRAY
 - (2) HYDRAULIC REELS WITH 100' OF HOSE EACH
 - (1) 20A, 120V DUPLEX RECEPTACLE
 - (1) 20, 240V T.L. RECEPTACLE
 - (1) 12V BLUE SEA FUSE BLOCK
 - COMPARTMENT LS5 CONTAINS:**
 - (1) 1/2 DEPTH ON-SCENE SLIDE OUT TRAY WITH TOOLBOARD
 - (1) HORIZONTAL FLOOR EXTENSION
 - (1) RACK FOR 10' FRESNO LADDER
 - (1) CIRCUIT BREAKER PANEL
 - (1) GENERATOR METER PANEL
 - (4) POLY TOOL BOXES
 - (1) 12V BLUE SEA FUSE BLOCK
 - PAC TRAC ON REAR WALL
 - COMPARTMENT LS6 CONTAINS:**
 - (2) 2-WAY ADJ SHELVES
 - 1/4" UPF POLY LINING ON COMPARTMENT FLOOR
 - (1) ELECTRIC CORD REEL WITH 200' OF 10/4 YELLOW CORD
 - COMPARTMENT LS7 CONTAINS:**
 - (1) 20A, 120V DUPLEX RECEPTACLE
 - (1) 12V BLUE SEA FUSE BLOCK



NOTE
DIMENSIONS SHOWN ARE APPROXIMATE AND ARE SUBJECT TO MINOR DEVIATIONS AS MAY OCCUR OR BE NECESSARY IN CONSTRUCTION. MINOR DETAILS NOT SHOWN.

- NOTES:**
1. WARN #10,000 PORTABLE RECEIVER STYLE WINCH
 2. POLISHED 5/5 SCUFFPLATES ON CAB DOOR JAMBS
 3. FLOOR IN CAB TO BE PADDED RUBBER
 4. DAVID CLARK 6 POSITION INTERCOM SYSTEM
 5. KUSSMAU PUMP PLUS 1200 CHARGER LOCATED BEHIND DRIVERS SEAT
 6. 5/5 SCUFFPLATES AROUND FUEL FILL OPENINGS
 7. (2) #9,000 RECEIVER STYLE ROPE RESCUE EYES
 8. PIERCE LED STRIP LIGHTS IN ALL BODY COMPARTMENTS
 9. ALUMINUM TREADPLATE ON CAB ROOF
 10. (2) PORTABLE HITCH RECEIVER STEPS
 11. (6) FOLD OUT REEL ROLLER GUIDES SHIPPED LOOSE

NOTE:
LAP DOORS HAVE BEEN SHOWN IN HIDDEN LINES TO CLEARLY IDENTIFY THE EQUIPMENT IN EACH COMPARTMENT. DASHED LINES ON SIDES ARE DOORS IN OPEN POSITION

CLEAR DOOR WIDTH KEY

AMOR ROLL UP DOORS:	-2 1/4"
CURTAIN ROLL UP DOORS:	-2 1/2"
PIERCE DOUBLE LAP DOORS:	-4 1/4"
PIERCE LIFT-UP LAP DOORS:	-1 1/2"

(EX: 60" F-F - 2 1/4" = 57 3/4" CLEAR)
(F-F) = FRAME TO FRAME

REV	DATE	BY	CH	EN5000
1	27JAN24	DHE	AZU	
2	17NOV23	DHE	AZU	
3	08NOV23	DHE	AZU	
4	13SEP23	DHE	AZU	

Pierce MANUFACTURING INC.

JOB NO. 38787

SCALE 1:24 DATE

DRAWN BY DHE 08AUG23

CHECKED BY AZU 09AUG23

TITLE HEAVY DUTY RESCUE WALKIN/NON-WALKIN COMBO

FOR PRINCE GEORGE'S COUNTY FIRE & EMS DEPARTMENT PRINCE GEORGE'S COUNTY RANDY SCHWARTZ

DWG NO. 38787AD-SH1

SHEET NO. 1 OF 1