

PUMPER BODY
Medium Aluminum 2nd Gen Pumper

CHASSIS
Enforcer Chassis

CHASSIS AXLE, FRONT, CUSTOM
18,000 Lb Dana Axle

AXLE, REAR
27,000 Lb Dana Axle

ENGINE
450 HP Cummins L9 Engine

TRANSMISSION
Allison 5th Gen, 3000 EVS P

BUMPER
Non Extended Stainless Steel

CAB
6010 Enforcer Cab

BODY WATER TANK
500 Gallon Poly Water Tank

COMPT, PUMPER, REAR
30.75" FF RollUp Rear Compt

COMPT, PUMPER, DRIVER SIDE
152" RollUp Full Height & Depth Front, Full Height Rear FDLER

COMPT, PUMPER PASS. SIDE
152" RollUp Full Height Front & Rear FDLER

FIRE SUPPRESSION PUMPHOUSE
45" Control Zone Top Mount

PUMP
1500 GPM Waterous CSU

CROSSLAYS, 1.50"
1.50" Crosslays Not Required

CROSSLAYS, 2.50"
2.50" Crosslay Not Required

SPEEDLAYS
(2) 1.50" w/ Poly Trays, Standard Capacity Side Outlets

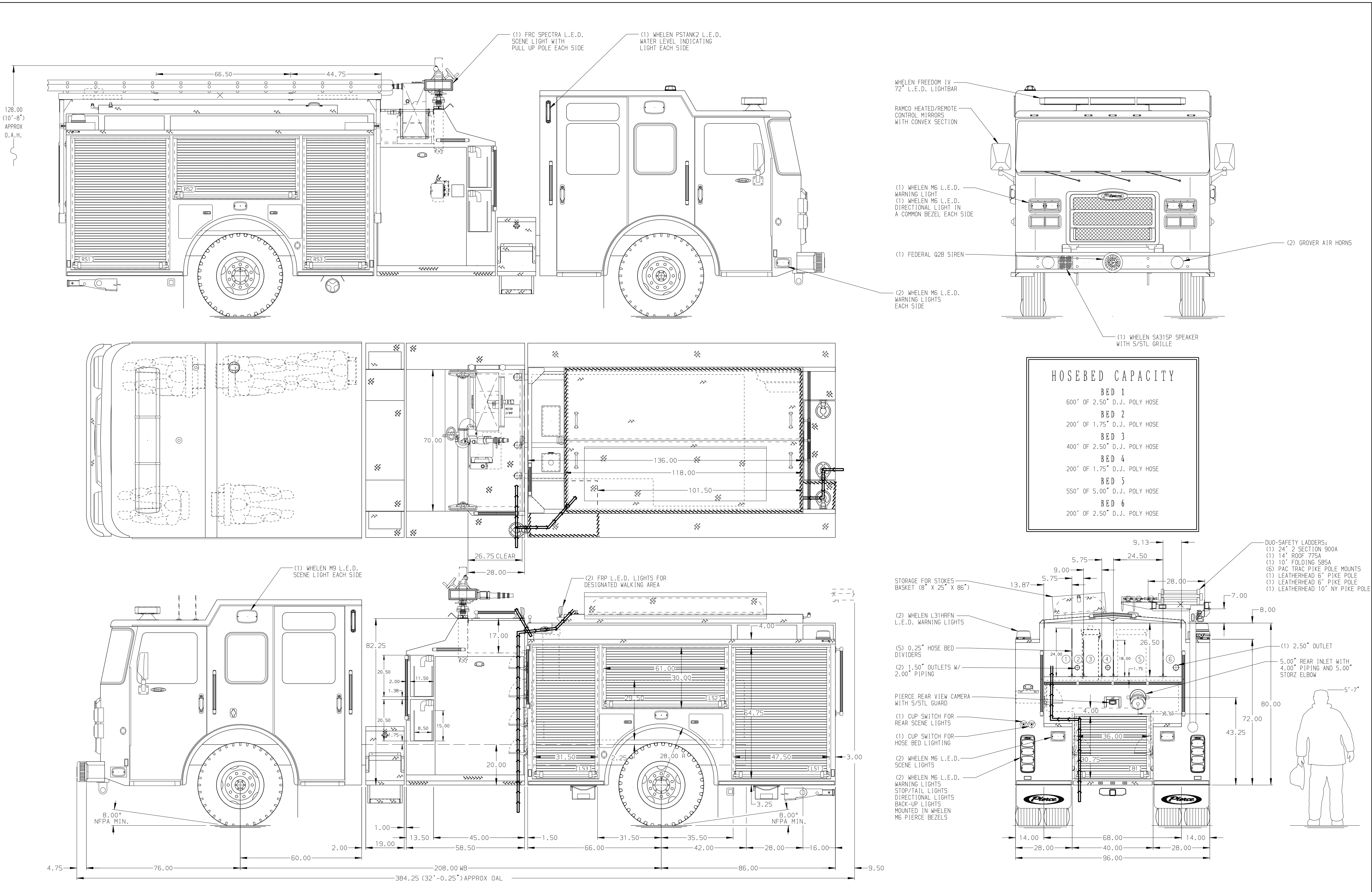
GENERATOR
Generator Not Required

Foam System
Husky 3 Single Agent Foam System

Foam Cell
20 Gallon Foam Cell, Not Reduced Water

Side Roll and Frontal Impact Protection

NOTE
DIMENSIONS SHOWN ARE APPROXIMATE AND ARE SUBJECT TO MINOR DEVIATIONS AS MAY OCCUR OR BE NECESSARY IN CONSTRUCTION. MINOR DETAILS NOT SHOWN.



- AUTOMATIC TIRE CHAINS
- SHORELINE RECEPTACLE WITH KISSMALL SUPER AUTO-EJECT LOCATED ON DRIVER SIDE OF THE CAB
- AIR INLET WITH DISCONNECT COUPLING IN THE DRIVER SIDE STEPELL
- XANTREX INVERTER LOCATED PER SHOP ORDER
- CIRCUIT BREAKER PANEL LOCATED PER SHOP ORDER
- EIGHT ADJUSTABLE SHELVES LOCATED PER SHOP ORDER
- TWO FLOOR MOUNTED SLIDE-OUT TRAYS LOCATED PER SHOP ORDER
- ONE SWING-OUT TOOLBOARD LOCATED PER SHOP ORDER
- ALUMINUM PEGBOARD LOCATED PER SHOP ORDER
- HANNAY BOOSTER REEL MODEL EF20-30-31 WITH 2/3 HP MOTOR LOCATED IN CARGO AREA FOR 150' OF 1.00" BOOSTER HOSE
- ONE TILTING/SLIDE-OUT TRAY LOCATED PER SHOP ORDER
- THREE 120V DUPLEX RECEPTACLES LOCATED PER SHOP ORDER
- ONE 120V 5-PLACE RECEPTACLE STRIP LOCATED PER SHOP ORDER
- FEDERAL RUMBLER-3 SPEAKER LOCATED BEHIND BUMPER
- TWO TOOLBOARDS ADDED TO SLIDE-OUT TRAYS PER SHOP ORDER
- ONE ANGLED REMOVABLE INSERT IN TRAY PER SHOP ORDER
- TWO ALUMINUM PEGBOARDS LOCATED TRAYS PER SHOP ORDER
- ALUMINUM REINFORCEMENT LOCATED ON UPPER REAR TANK WALL OF R51
- BATTERY CHARGER LOCATED BEHIND DRIVER'S SEAT
- BATTERY CHARGE INDICATOR LOCATED ON DRIVER'S SEAT RISER
- ONE FLAG HOLDER WITH PIPE AND PIN MOUNTED AT FINAL INSPECTION

CUSTOMER APPROVAL			
APPROVED BY:			
DATE:			
CHASSIS DATA	TITLE	Pierce Pumper Approval Drawing	
MAKE	FOR	Richland Fire and Emergency Service	
PIERCE			
MODEL	DWG NO.	38818AD	
ENFORCER			

Pierce MANUFACTURING INC.		JOB NO.	38818 01-02
		SCALE	1:24
		DATE	
		DRAWN BY	MMF
		01MAR23	
		CHECKED BY	COL
		02MAR23	
		SHEET SIZE	
		SHEET NO.	1 OF 1