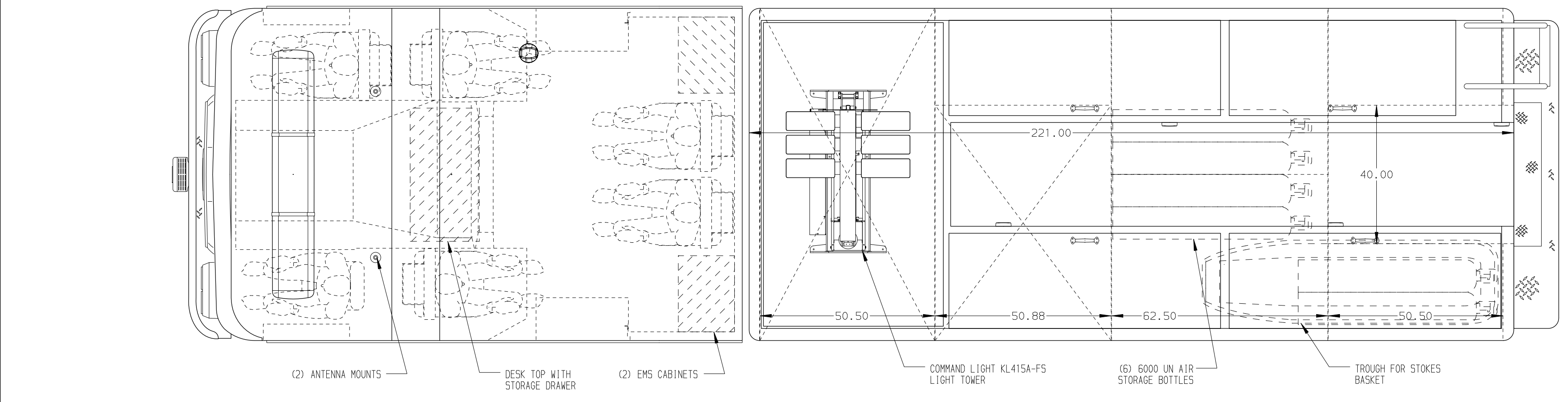
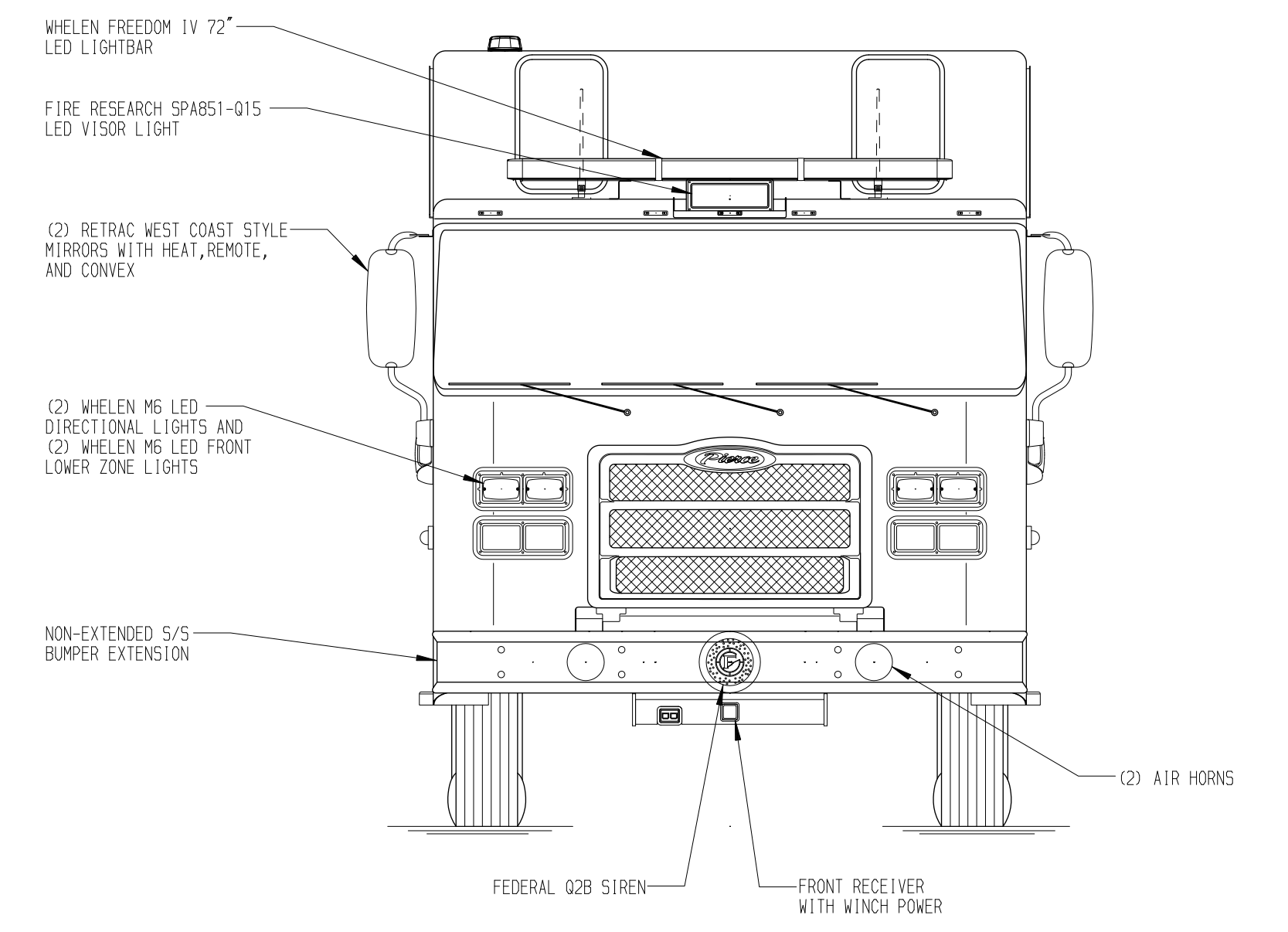
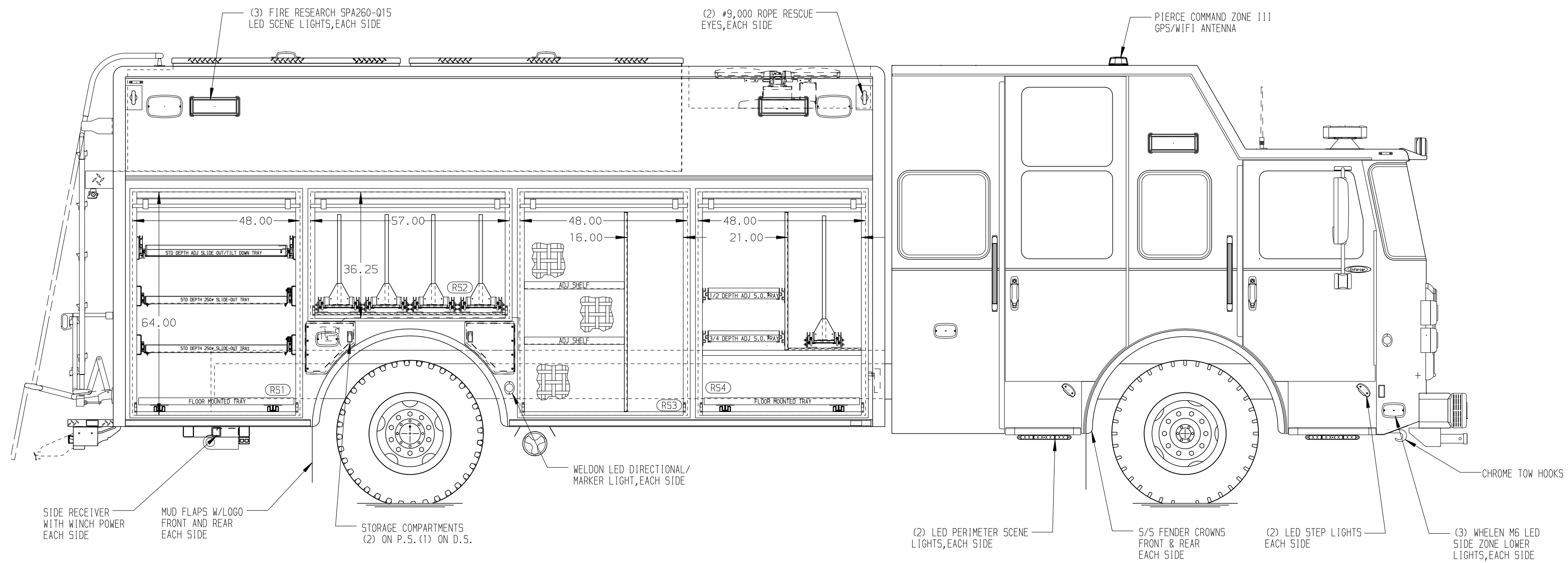
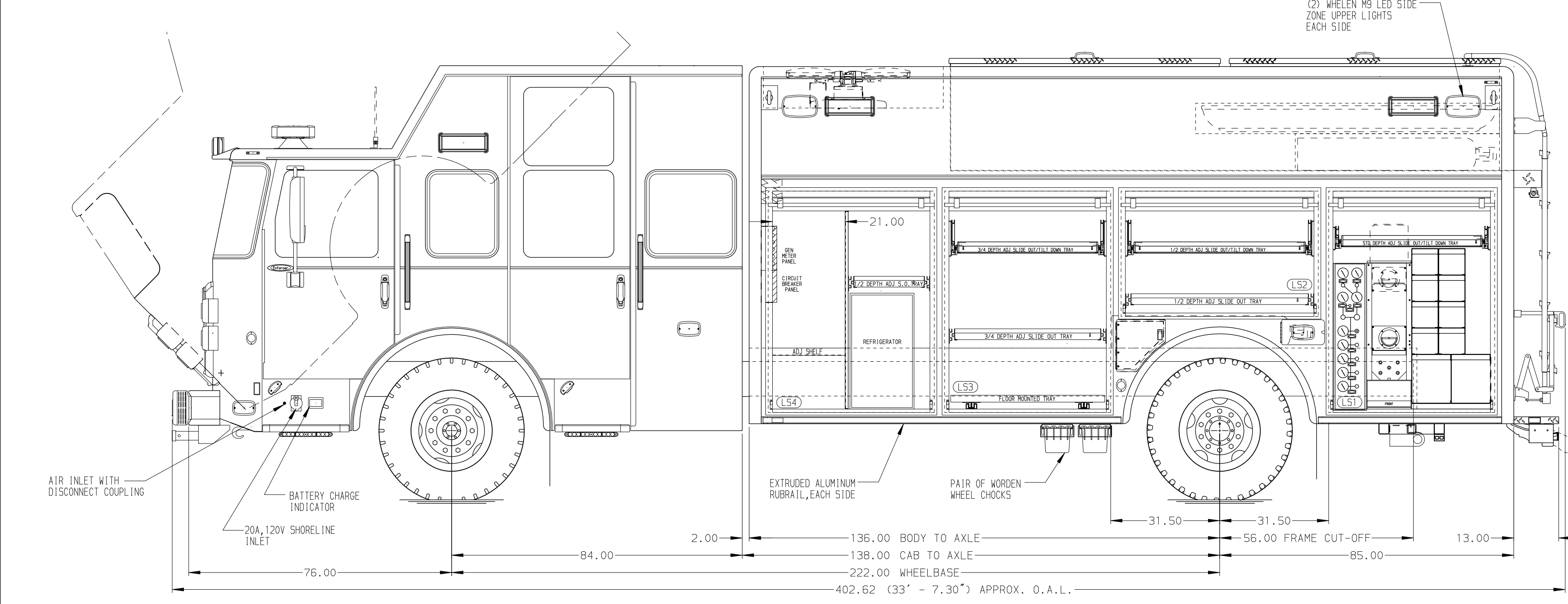


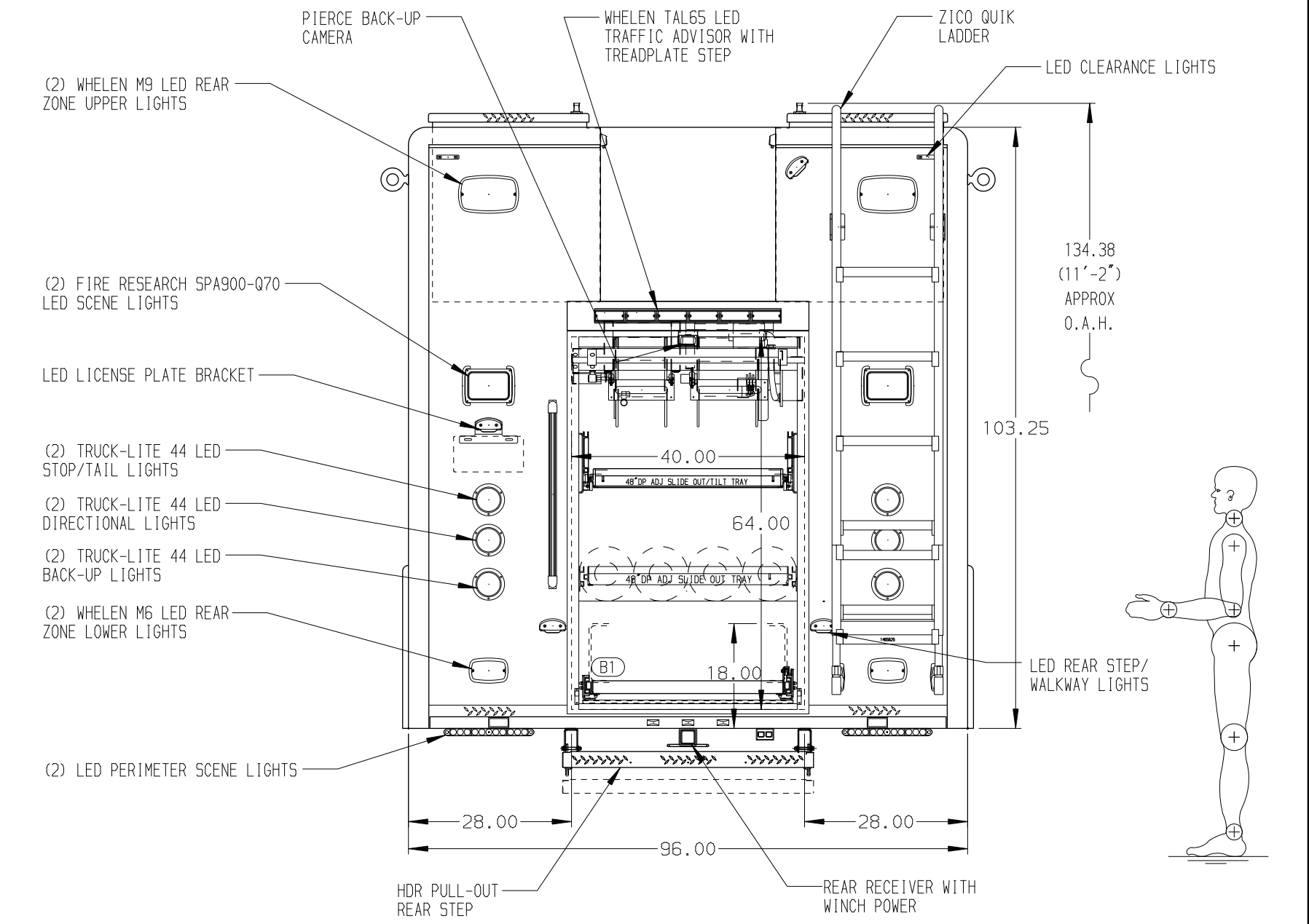
- RIGHT SIDE COMPARTMENTS CONTAIN THE FOLLOWING:**
- (2) STD DEPTH ADJ SLIDE OUT TRAYS
  - (1) STD DEPTH ADJ SLIDE OUT/TILT TRAYS
  - (1) FLOOR MOUNTED TRAY
  - (1) 15/20A, 120V DUPLEX RECEPTACLE
- COMPARTMENT RS2 CONTAINS:**
- (4) 1/2 DEPTH ADJ SLIDE OUT TRAYS WITH TOOLBOARDS
  - (1) REAR WALL COMPARTMENT DIVIDER
  - (1) 15/20A, 120V DUPLEX RECEPTACLE
- COMPARTMENT RS3 CONTAINS:**
- (1) REAR WALL COMPARTMENT DIVIDER
  - (2) STD DEPTH ADJ SHELVES
  - (1) VERTICAL COMPARTMENT DIVIDER
  - CARGO RETENTION NETTING (REAR OF DIVIDER)
  - (1) 15/20A, 120V DUPLEX RECEPTACLE
- COMPARTMENT RS4 CONTAINS:**
- (1) CAB LIFT CONTROLLER
  - (1) 1/2 DEPTH ADJ SLIDE OUT TRAY
  - (1) 3/4 DEPTH ADJ SLIDE OUT TRAY
  - (1) FLOOR MOUNTED TRAY
  - (1) 15/20A, 120V DUPLEX RECEPTACLE
  - (1) HORIZONTAL FLOOR EXTENSION
  - (1) VERTICAL COMPARTMENT DIVIDER
  - (1) 3/4 DP FLOOR MTD SLIDE OUT TOOLBOARD



- REAR COMPARTMENT CONTAINS THE FOLLOWING:**
- COMPARTMENT B1 CONTAINS:**
- (1) 48\"/>



- LEFT SIDE COMPARTMENTS CONTAIN THE FOLLOWING:**
- COMPARTMENT LS1 CONTAINS:**
- (1) STD DEPTH ADJ SLIDE OUT/TILT TRAY
  - (1) RACK FOR 10 SPECIAL SCBA BOTTLES
  - (1) 15/20A, 120V DUPLEX RECEPTACLE
  - (1) CASCADE SYSTEM CONTROL PANEL
  - (1) SPACESAVER 2-BOTTLE FILL ENCLOSURE
- COMPARTMENT LS2 CONTAINS:**
- (1) 1/2 DEPTH ADJ SLIDE OUT TRAY
  - (1) 1/2 DEPTH ADJ SLIDE OUT/TILT TRAY
  - (1) 15/20A, 120V DUPLEX RECEPTACLE
- COMPARTMENT LS3 CONTAINS:**
- (1) 3/4 DEPTH ADJ SLIDE OUT TRAY
  - (1) 3/4 DEPTH ADJ SLIDE OUT/TILT TRAY
  - (1) FLOOR MOUNTED TRAY
  - (1) 15/20A, 120V DUPLEX RECEPTACLE
- COMPARTMENT LS4 CONTAINS:**
- (1) IOTA 75 AMP BATTERY CHARGER
  - (1) VERTICAL COMPARTMENT DIVIDER
  - (1) 1/2 DEPTH ADJ SLIDE OUT TRAY
  - (1) STD DEPTH ADJ SHELF
  - (1) AVANTI 3.3 CF REFRIGERATOR
  - (1) CIRCUIT BREAKER PANEL
  - (1) GENERATOR METER PANEL
  - (1) COMMAND LIGHT CONTROLLER
  - (1) 15/20A, 120V DUPLEX RECEPTACLE



**NOTE**  
DIMENSIONS SHOWN ARE APPROXIMATE AND ARE SUBJECT TO MINOR DEVIATIONS AS MAY OCCUR OR BE NECESSARY IN CONSTRUCTION. MINOR DETAILS NOT SHOWN.

- NOTES:**
- A QANW 15kw SINGLE PHASE PTO DRIVEN GENERATOR WITH SPLASH GUARD TO BE LOCATED BETWEEN THE FRAME RAILS
  - WARN #8,000 PORTABLE RECEIVER STYLE WINCH
  - POLISHED 5/5 SCUFFPLATES ON CAB AND CREW CAB DOOR JAMBS
  - FLOOR IN CAB AND CREW CAB TO BE PADDED RUBBER
  - 5/5 GUARDS ON ALL BODY ROLL-UP DOORS
  - PIERCE LED LIGHTS IN ALL BODY AND HATCH COMPARTMENTS
  - TURF TILE MATTING ON ALL SHELVES, TRAYS, AND HATCH COMPARTMENT FLOORS
  - (4) 15A, 120V 6-PLACE RECEPTACLES LOCATED BEHIND DRIVERS AND OFFICERS SEAT AND IN EMS CABINET

CLEAR DOOR WIDTH KEY		CHASSIS DATA	TITLE
AMDR ROLL UP DOORS:	-2 1/4"	11MAR24	DHE CDK
CORTITE ROLL UP DOORS:	-2 1/2"	24JAN24	DHE CDK
PIERCE DOUBLE LIP DOORS:	-4 1/4"	01NOV23	DHE AZU
PIERCE LIFT-UP LAP DOORS:	-1 1/2"		
(EX: 60" F-F - 2 1/4" = 57 3/4" CLEAR)		REV	DATE BY CH
			EN8424

		JOB NO.	38820
		SCALE	1:24
<b>HEAVY DUTY RESCUE WALKIN</b> COTTAGE GROVE FIRE DEPARTMENT BID #727		DATE	
		DRAWN BY	DHE
DWG NO. <b>38820AD</b>		CHECKED BY	AZU
		SHEET SIZE	D
JASON KRUEGER		SHEET NO.	1 OF 1