

**PUMPER BODY**  
Medium Aluminum 2nd Gen Pumper

**CHASSIS**  
Enforcer Chassis

**CHASSIS AXLE, FRONT, CUSTOM**  
22,800 Lb TAK-4 Axle

**AXLE, REAR**  
27,000 Lb Meritor Axle

**ENGINE**  
500 HP Cummins X12 Engine

**TRANSMISSION**  
Allison 6th Gen, 4000 EVS P

**BUMPER**  
19" Extended Painted Steel

**CAB**  
7010 Enforcer Cab

**BODY WATER TANK**  
980 Gallon Poly Water Tank

**COMPT, PUMPER, REAR**  
51.25" FF RollUp Rear Compt

**COMPT, PUMPER, LEFT SIDE**  
152" RollUp Full Height Front & Rear FDLR

**COMPT, PUMPER, RIGHT SIDE**  
152" RollUp Full Height Front & Rear FDLR

**FIRE SUPPRESSION PUMPHOUSE**  
45" Control Zone Top Mount

**PUMP**  
1500 GPM Waterous CSU

**CROSSLAYS, 1.50"**  
1.50" Crosslays Not Required

**CROSSLAYS, 2.50"**  
2.50" Crosslay Not Required

**SPEEDLAYS**  
(2) 1.50" W/Tray Std. Capacity

**GENERATOR**  
Generator Not Required

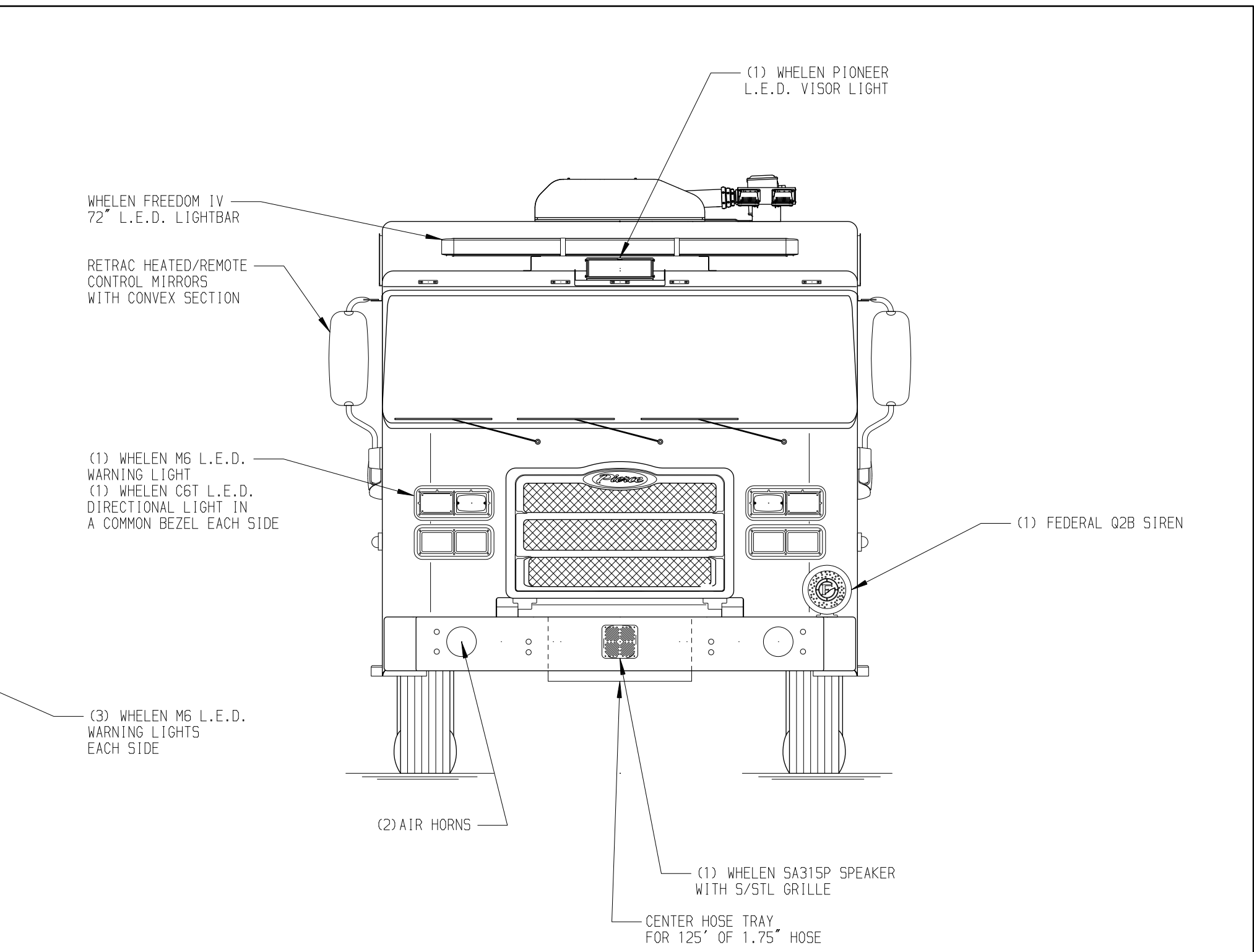
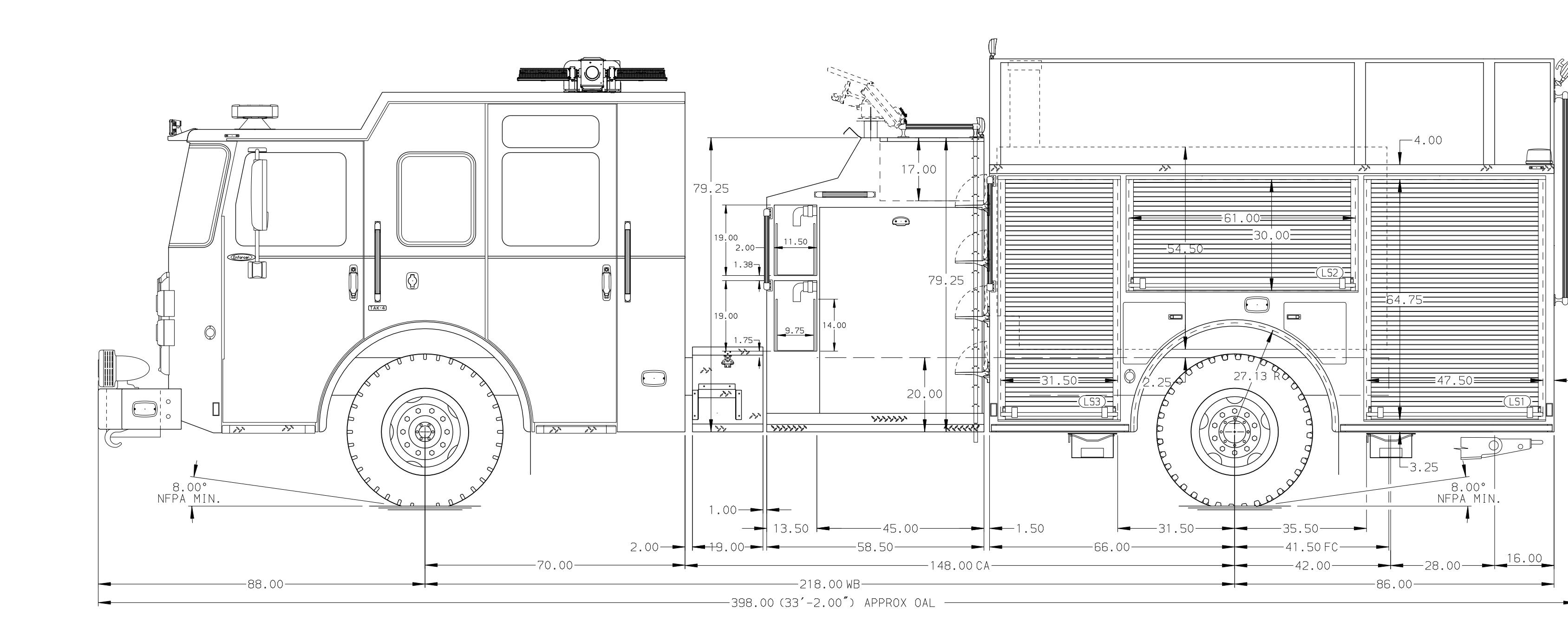
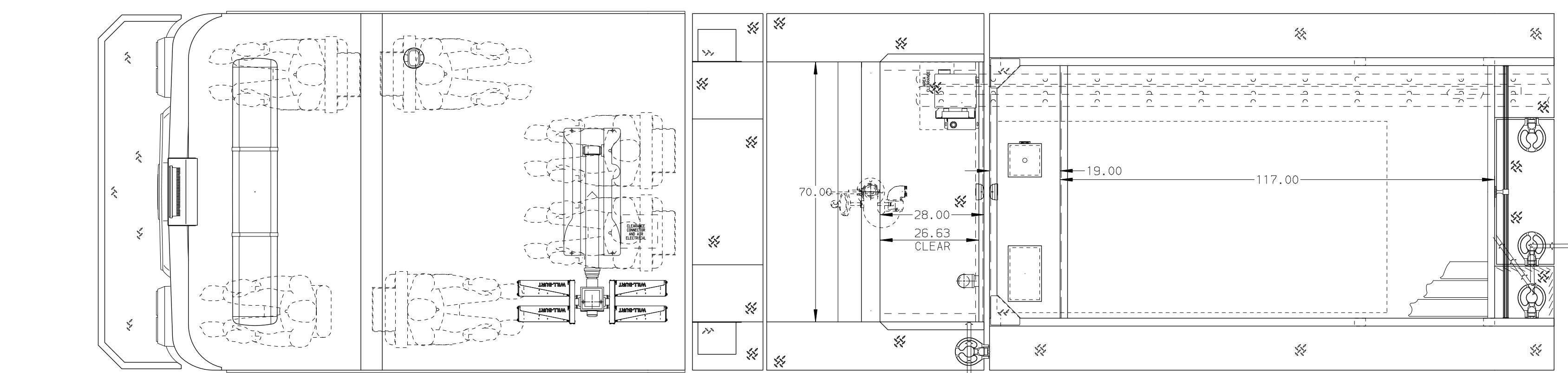
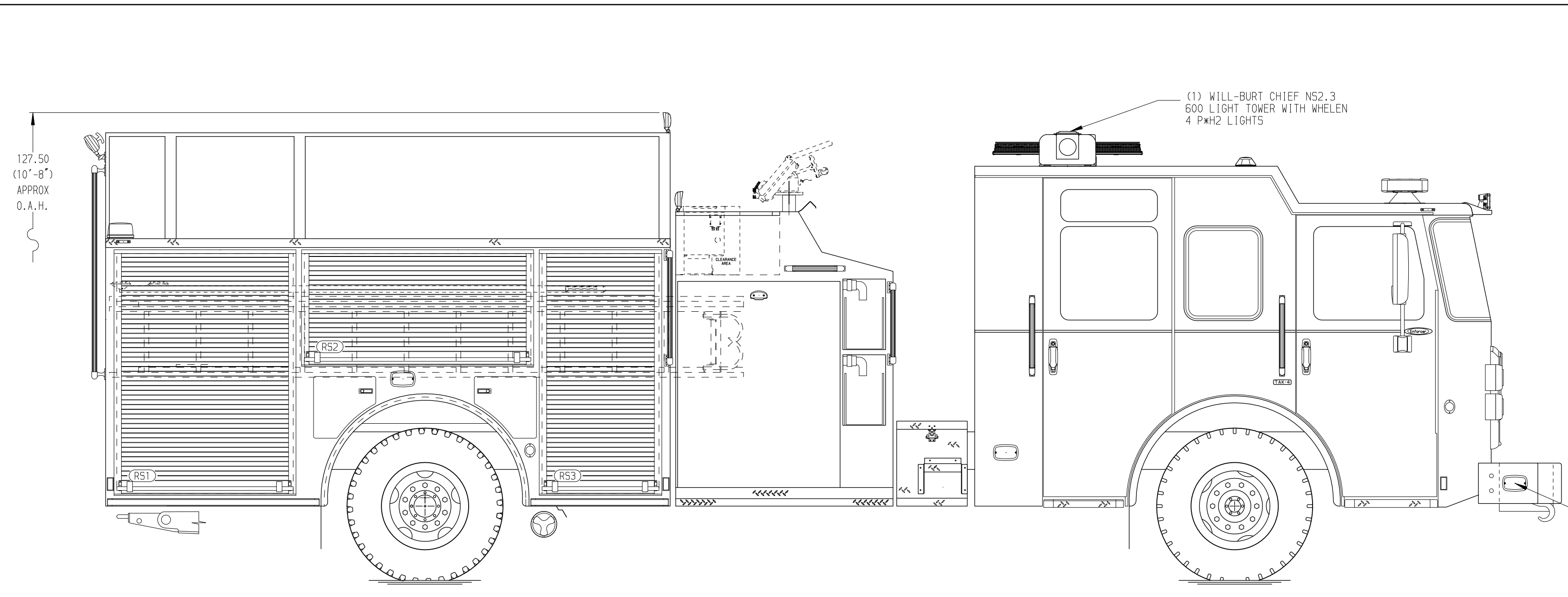
**Foam System**  
Husky 3 Single Agent Foam System

**Foam Cell**  
20 Gallon Foam Cell, Reduced Water

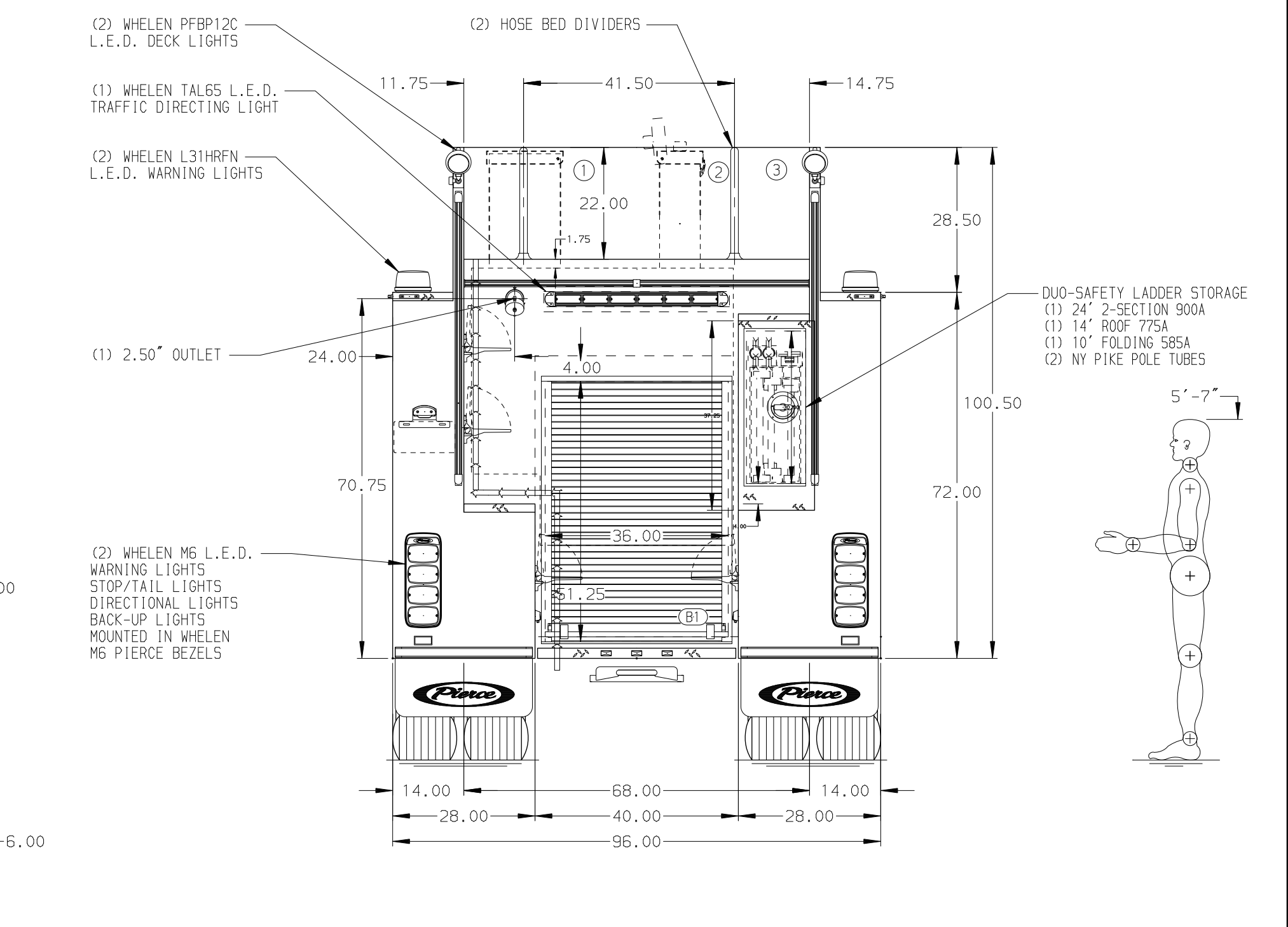
Side Roll and Frontal Impact Protection

**NOTE**  
DIMENSIONS SHOWN ARE APPROXIMATE AND ARE SUBJECT TO MINOR DEVIATIONS AS MAY OCCUR OR BE NECESSARY IN CONSTRUCTION. MINOR DETAILS NOT SHOWN.

- ONE 1.50 OUTLET WITH 2.00 PIPING AND SWIVEL LOCATED IN CENTER BUMPER TRAY
- SHORELINE RECEPTACLE WITH KUGSMAIL SUPER AUTO-EJECT LOCATED ON DRIVER SIDE OF THE CAB
- AIR INLET WITH DISCONNECT COUPLING IN THE DRIVER SIDE STEPWELL
- SIX ADJUSTABLE SHELVES LOCATED PER ORDER
- THREE FLOOR MOUNTED SLIDE-OUT TRAY LOCATED PER ORDER
- ONE TOOLBOARD LOCATED PER ORDER



HOSEBED CAPACITY	
<b>BED 1</b>	500' OF 3.00" D.J. POLY HOSE
<b>BED 2</b>	1000' OF 5.00" D.J. POLY HOSE
<b>BED 3</b>	500' OF 3.00" D.J. POLY HOSE



<b>Pierce MANUFACTURING INC.</b>		JOB NO.	38868
		SCALE	1:24
		DATE	
TITLE	Pierce Pumper Approval Drawing	DRAWN BY	WRE
FOR	Highway 70 West FD AR	CHECKED BY	MMF
DWG NO.	38868AD	SHEET SIZE	D
		SHEET NO.	1 OF 1

REV	DATE	BY	CH	ENFORCER
22DEC23	MMF	ZWE	MAKE	
12OCT23	MMF	GKH	PIERCE	
04AUG23	WRE	GKH	MODEL	