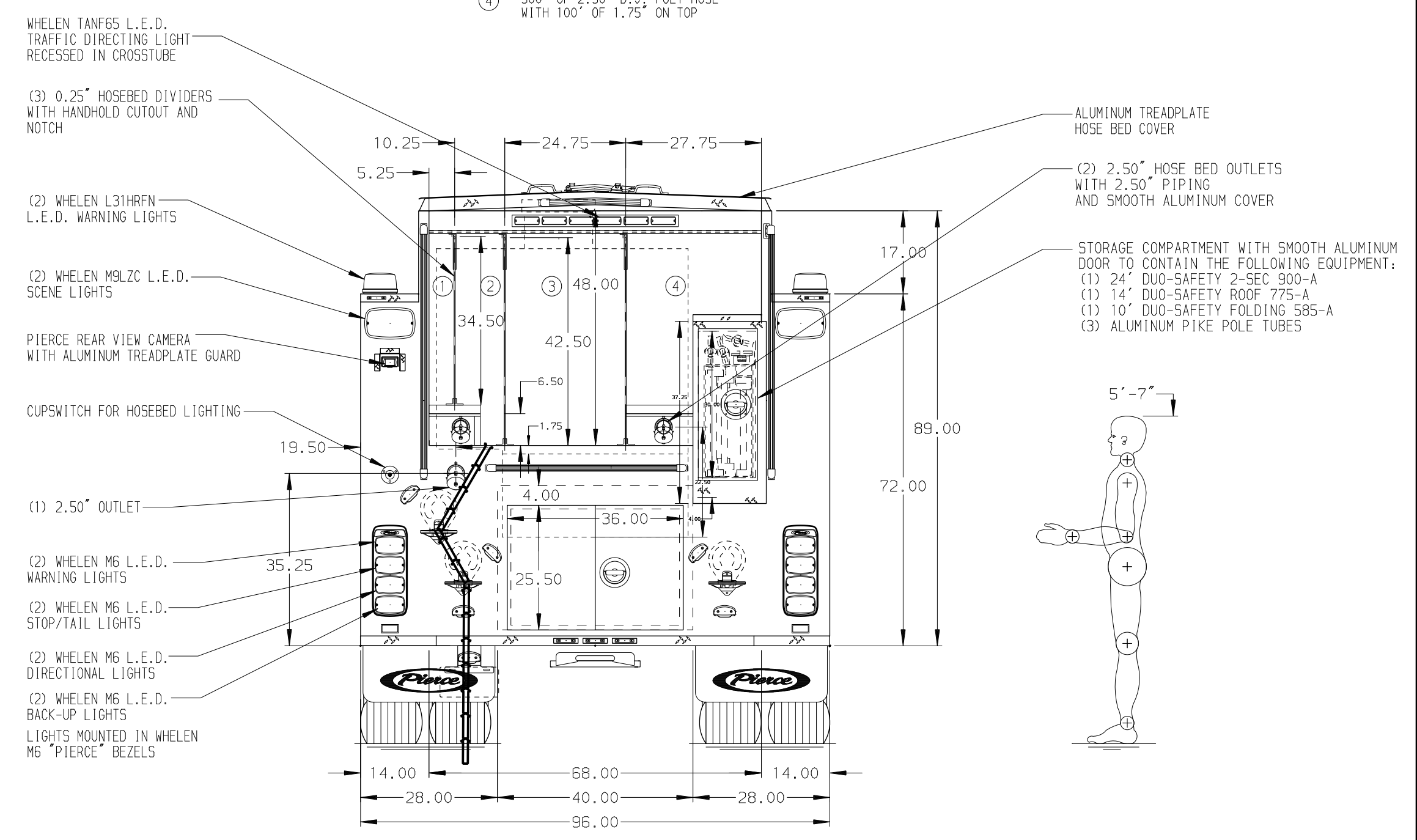
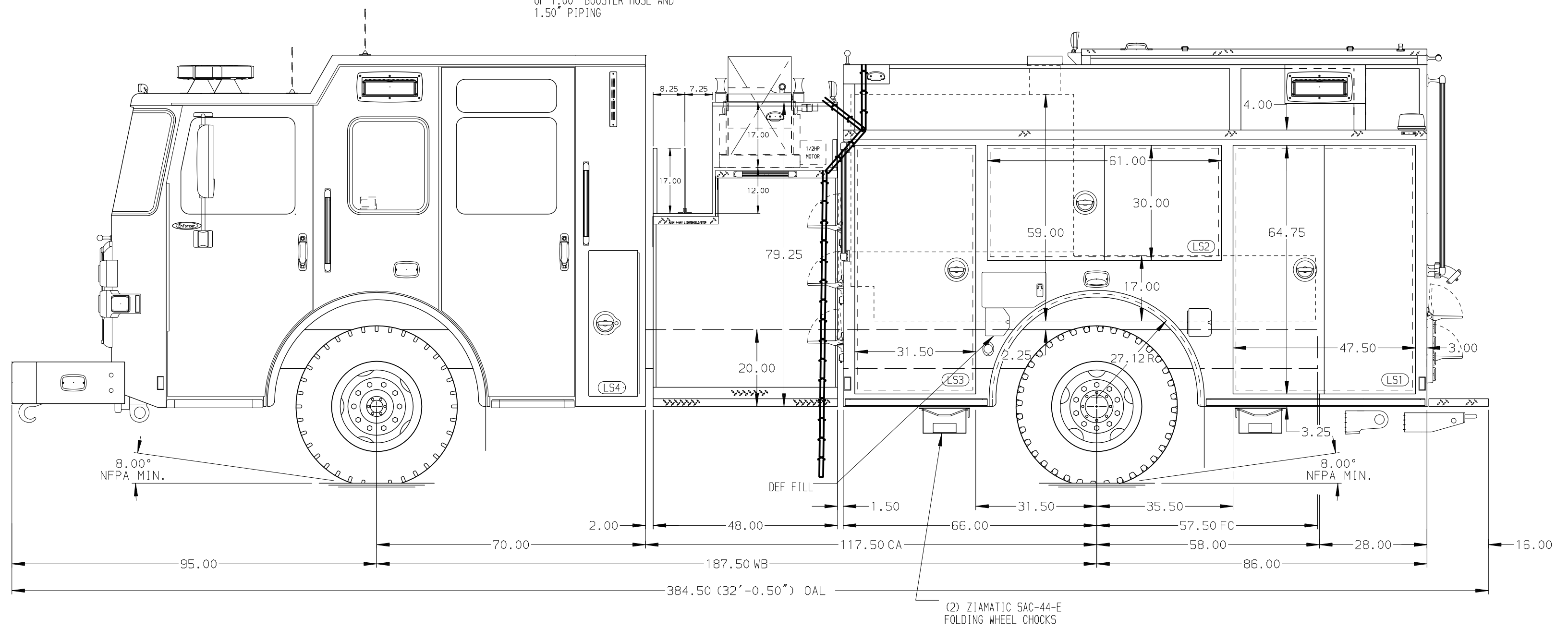


- HOSEBED CAPACITIES
- ① - 300' OF 2.50" D.J. POLY HOSE
 - ② - 500' OF 2.50" D.J. POLY HOSE
 - ③ - 700' OF 5.00" D.J. POLY HOSE
 - ④ - 500' OF 2.50" D.J. POLY HOSE WITH 100' OF 1.75" ON TOP



STAINLESS STEEL BODY

SIDE ROLL AND FRONTAL IMPACT PROTECTION

NOTE
 DIMENSIONS SHOWN ARE APPROXIMATE AND ARE SUBJECT TO MINOR DEVIATIONS AS MAY OCCUR OR BE NECESSARY IN CONSTRUCTION.
 MINOR DETAILS NOT SHOWN.

1. BATTERY CHARGER/AIR COMPRESSOR LOCATED PER SHOP ORDER
2. BATTERY CHARGER INDICATOR BEHIND DRIVER'S SEAT DISPLAYED THROUGH WINDOW
3. SHORELINE RECEPTACLE WITH KUSSMAIL SUPER AUTO-EJECT ON THE DRIVER'S SIDE STEP WELL
4. DUAL L.E.D. LIGHT STRIPS LOCATED IN HOSE BED
5. SEVEN FULL WIDTH/DEPTH ADJUSTABLE SHELVES LOCATED PER SHOP ORDER
6. ONE FLOOR MOUNTED SLIDE-OUT TRAY LOCATED PER SHOP ORDER
7. PAC TRAC INSTALLED ON THE SIDE WALL OF ALL SIDE COMPARTMENTS PER SHOP ORDER
8. TWO FLOOR MOUNTED STORAGE RACKS LOCATED PER SHOP ORDER
9. TWO 120V NEMA DUPLEX RECEPTACLES LOCATED IN THE CAB PER SHOP ORDER
10. THREE 120V NEMA DUPLEX RECEPTACLES IN THE BODY PER SHOP ORDER

REV	DATE	BY	CH	ENFORCER
22MAY24	LST	CLM		CHASSIS DATA
28MAR24	LST	CLM		MAKE
15FEB24	LST	CLM		MODEL

		JOB NO.	38877
		SCALE	DATE
TITLE	1500-D-750P, 750 GAL. WATERTANK, 152" FH/FDLR BODY LADDERS BTWN TANK & SS, (2) XLAYS, DELUGE, HOSE REEL	DRAWN BY	LST
FOR	TINLEY PARK FIRE DEPARTMENT TINLEY PARK, ILLINOIS	CHECKED BY	EGO
DWG NO.	38877AD	SHEET SIZE	SHEET NO.
		D	1 OF 1