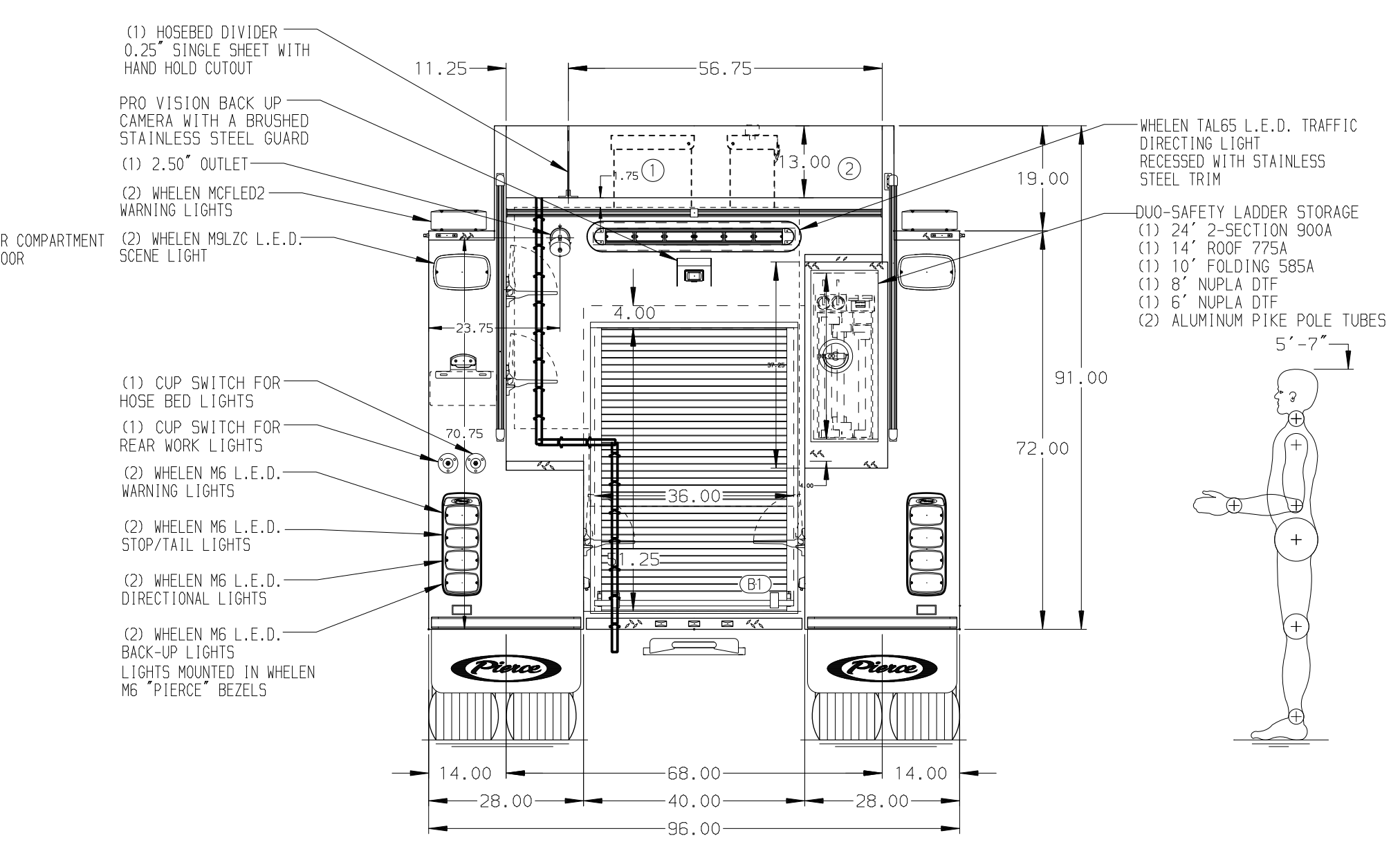
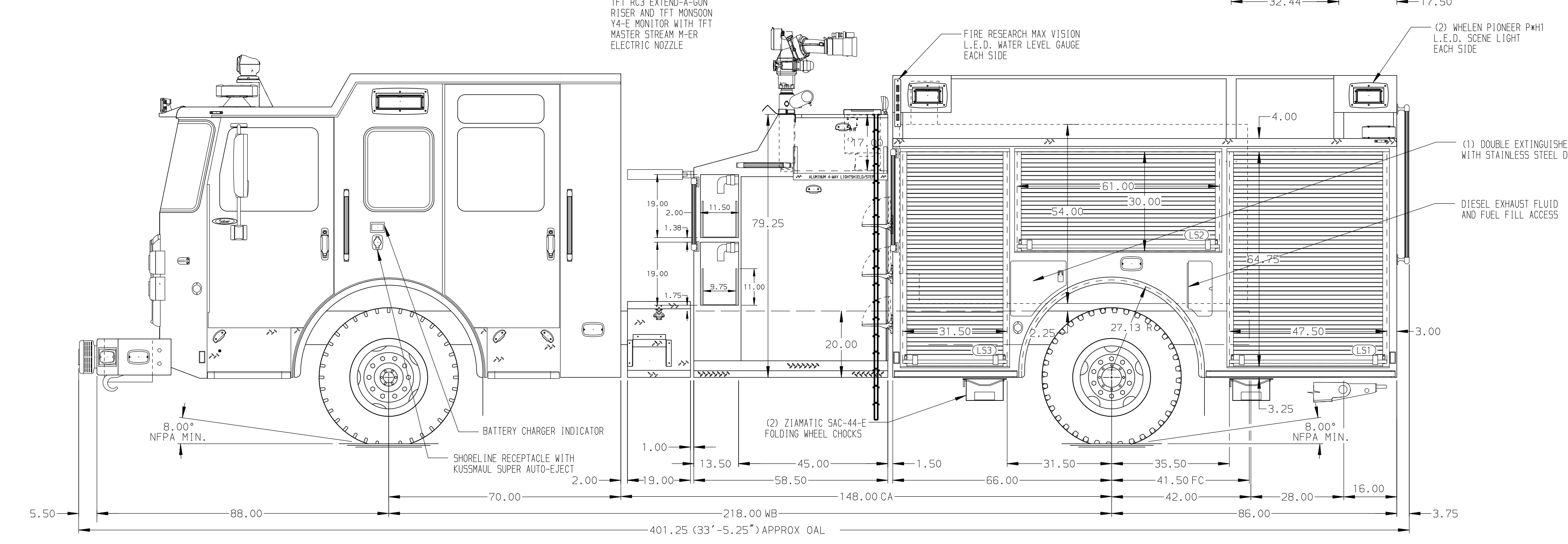


- HOSEBED CAPACITIES
- ① 300' OF 3.00" D.J. HOSE
 - ② 1000' OF 5.00" D.J. HOSE



ALUMINUM BODY

NOTE
DIMENSIONS SHOWN ARE APPROXIMATE AND ARE SUBJECT TO MINOR DEVIATIONS AS MAY OCCUR OR BE NECESSARY IN CONSTRUCTION. MINOR DETAILS NOT SHOWN.

CUSTOMER APPROVAL				Pierce MANUFACTURING INC.		JOB NO.	PRELIM
APPROVED BY: _____						SCALE	DATE
DATE: _____						1:24	
CHASSIS DATA				TITLE	1500-D-1000P, 970 WATER W/30 FOAM, 152" BODY, FDLR		
MAKE				FOR	(2) SPEEDLAYS, DELUGE, LADDERS BTWN TANK & SS		
PIERCE				BAINBRIDGE PUBLIC SAFETY DEPT			
MODEL				BAINBRIDGE, GEORGIA			
SABER FR				DWG NO.	38892AD		
REV	DATE	BY	CH	SHEET SIZE		SHEET NO.	
-	-	-	-	D		1 OF 1	