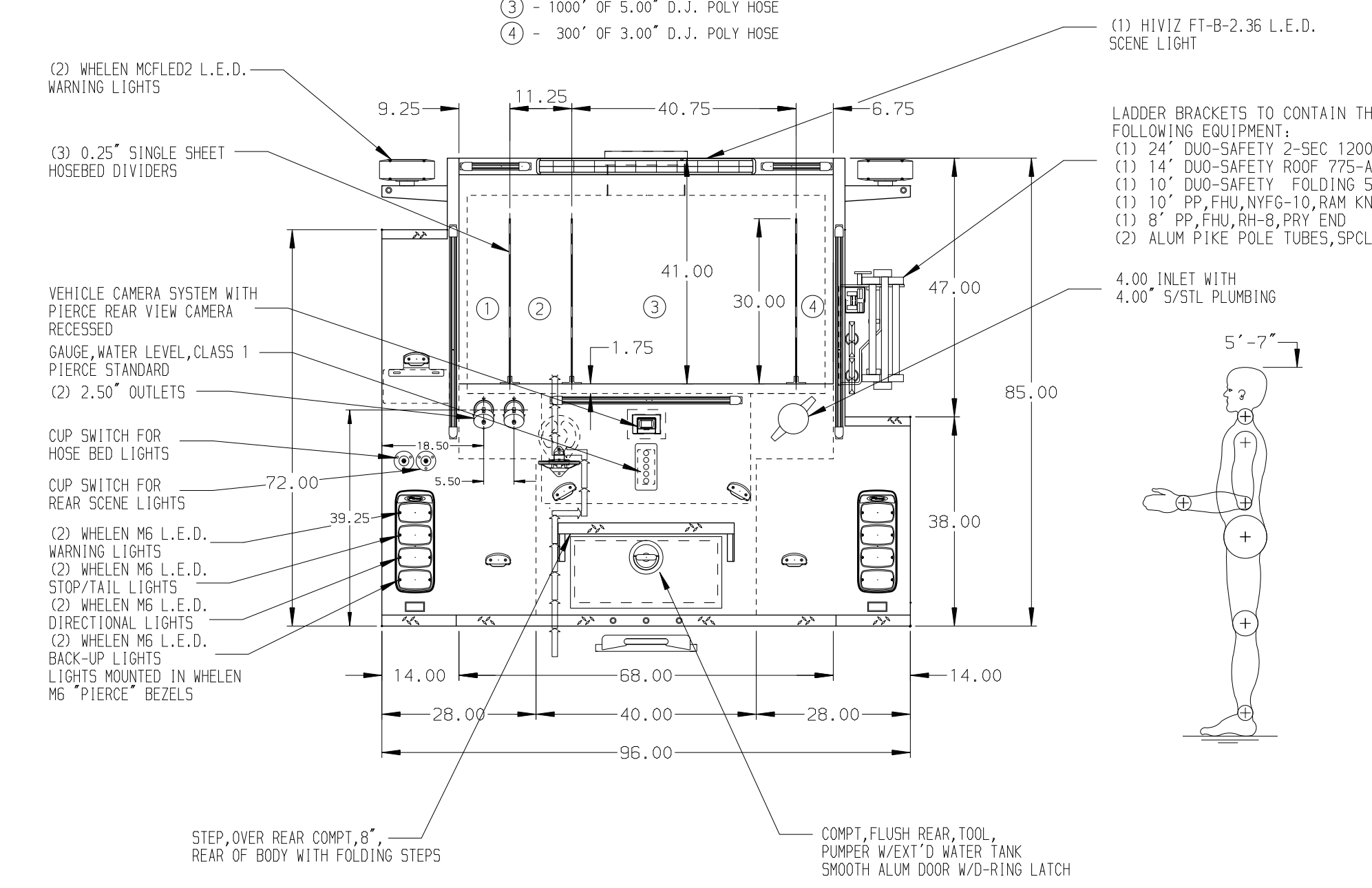


- HOSEBED CAPACITIES
- ① - 300' OF 2.50" D.J. POLY HOSE
 - ② - 200' OF 1.75" D.J. POLY HOSE
 - ③ - 1000' OF 5.00" D.J. POLY HOSE
 - ④ - 300' OF 3.00" D.J. POLY HOSE



ALUMINUM BODY

NOTE
 DIMENSIONS SHOWN ARE APPROXIMATE AND ARE SUBJECT TO MINOR DEVIATIONS AS MAY OCCUR OR BE NECESSARY IN CONSTRUCTION. MINOR DETAILS NOT SHOWN.

		JOB NO.	38895
		SCALE	DATE
TITLE	1500-D-1000P, 152" FDLER BODY, FULL HEIGHT LS, LOW RS LADDERS ON RS LADDER RACK, (3) XLAYS, (3) HSH CAB ROOF	DRAWN BY	JWO
FOR	CITY OF WASHINGTON FIRE DEPARTMENT WASHINGTON, PENNSYLVANIA	CHECKED BY	CDU
DWG NO.	38895AD	SHEET SIZE	SHEET NO.
REV	DATE	BY	CH
SABER FR			