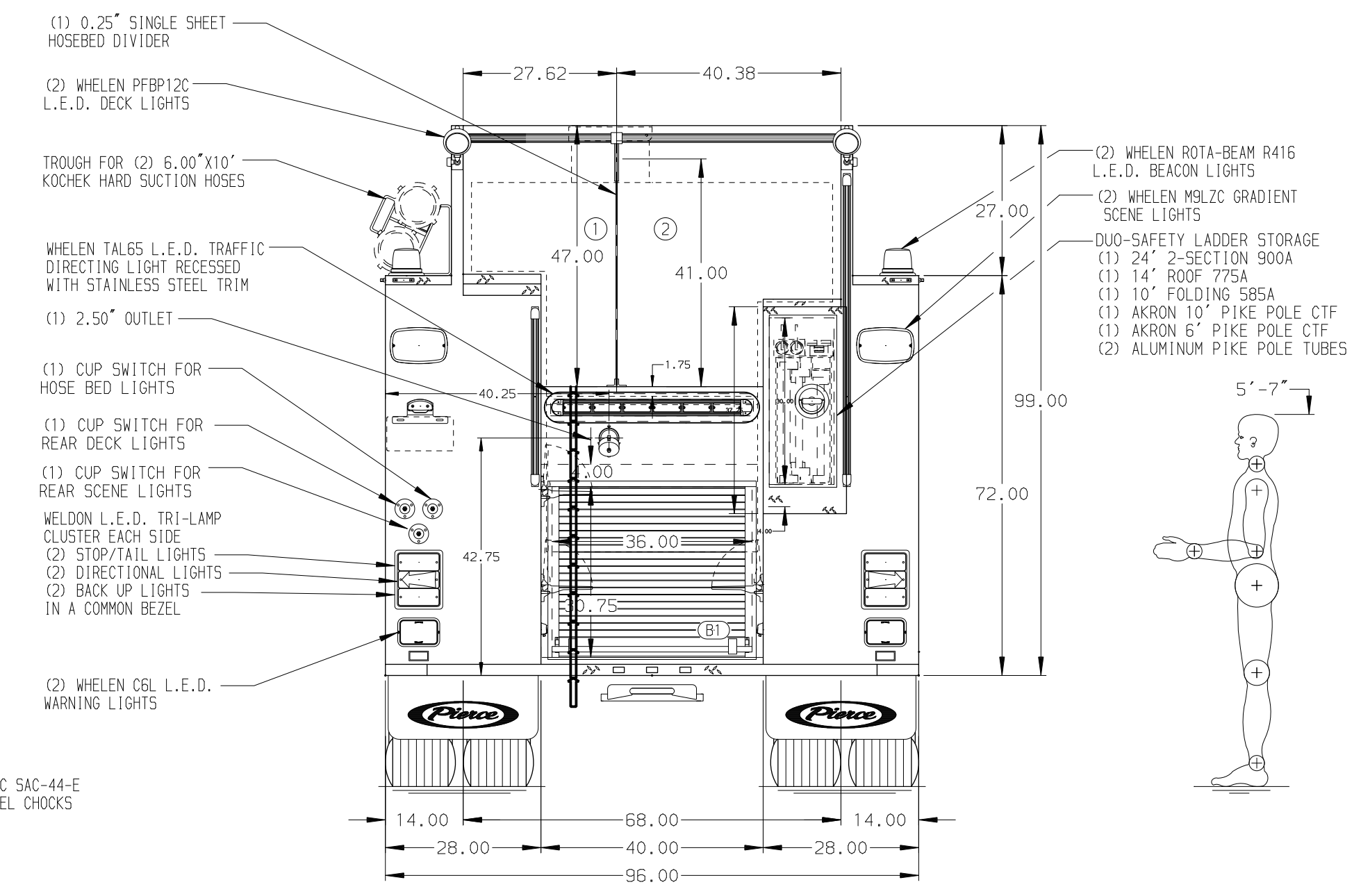
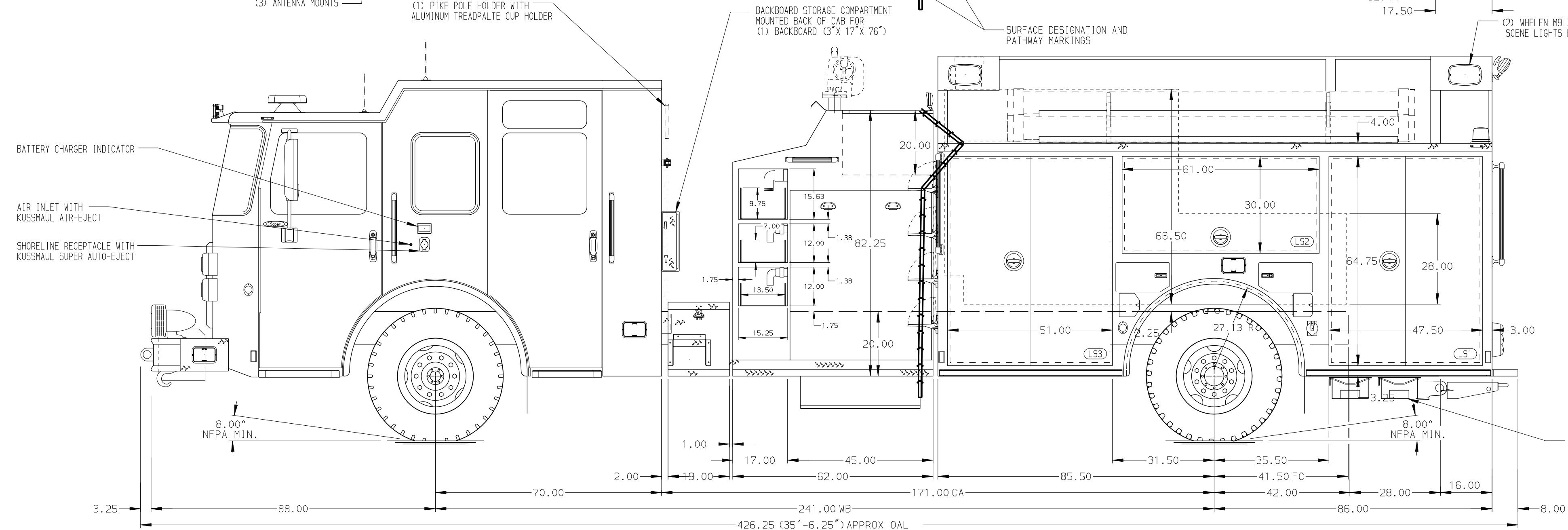
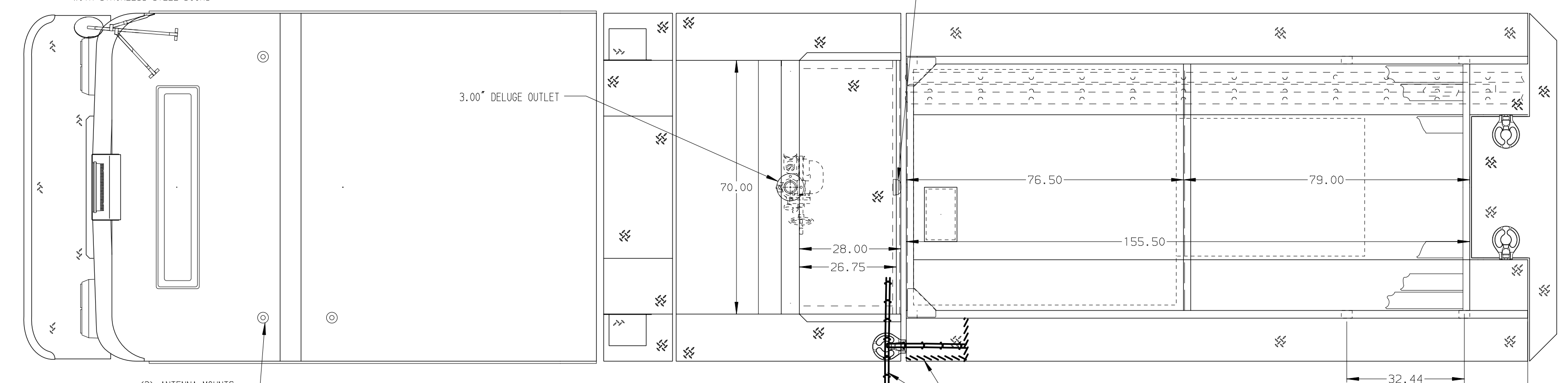


HOSEBED CAPACITIES

① 1000' OF 3.00" D.J. HOSE

② 1000' OF 5.00" D.J. HOSE



ALUMINUM BODY

NOTE
DIMENSIONS SHOWN ARE APPROXIMATE AND ARE SUBJECT TO MINOR DEVIATIONS AS MAY OCCUR OR BE NECESSARY IN CONSTRUCTION. MINOR DETAILS NOT SHOWN.

CUSTOMER APPROVAL				
APPROVED BY:				
DATE:				
REV	DATE	BY	CH	SABER FR



TITLE	1500-D-1000P, 171" BODY, LS FH/FD, RS FH FDLER (3) SPEEDLAYS, LADDERS BTWN TANKD & SS
FOR	TRURO FIRE SERVICE TRURO, NOVA SCOTIA, CANADA
DWG NO.	38977AD

JOB NO.	38977
SCALE	1:24
DATE	
DRAWN BY	LME
CHECKED BY	CZA
SHEET SIZE	D
SHEET NO.	1 OF 1