

# Pumper, PUC

## BODY

Pumper, PUC, Aluminum

## CHASSIS

Enforcer Chassis, PUC

## CHASSIS

### AXLE, FRONT, CUSTOM

22,800 Lb TAK-4 Axle

### AXLE, REAR

31,000 Lb Dana Axle

## ENGINE

450 HP Cummins L9 Engine

## TRANSMISSION

Allison 6th Gen, 3000 EVS P

## BUMPER

19" Extended Stainless Steel

## CAB

7010 Enforcer Cab, PUC

## BODY

### WATER TANK

1000 Gallon Poly Water Tank

### COMPT, PUMPER, REAR

33.50" FF RollUp Rear Compt w/Tailboard, PUC

19" PAINTED STEEL EXTENSION

### COMPT, PUMPER, LEFT SIDE

214" RollUp Full Height & Depth Front & Rear, PUC

### COMPT, PUMPER, RIGHT SIDE

214" RollUp Full Height & Depth Front & Rear, PUC

## FIRE SUPPRESSION

### PUMPHOUSE

Control Zone, PUC

## PUMP

1500 GPM Pierce PUC

### CROSSLAYS, 1.50"

(2) 1.50", Poly Trays, 200"

### CROSSLAYS, 2.50"

2.50" CrossLays Not Required

## GENERATOR

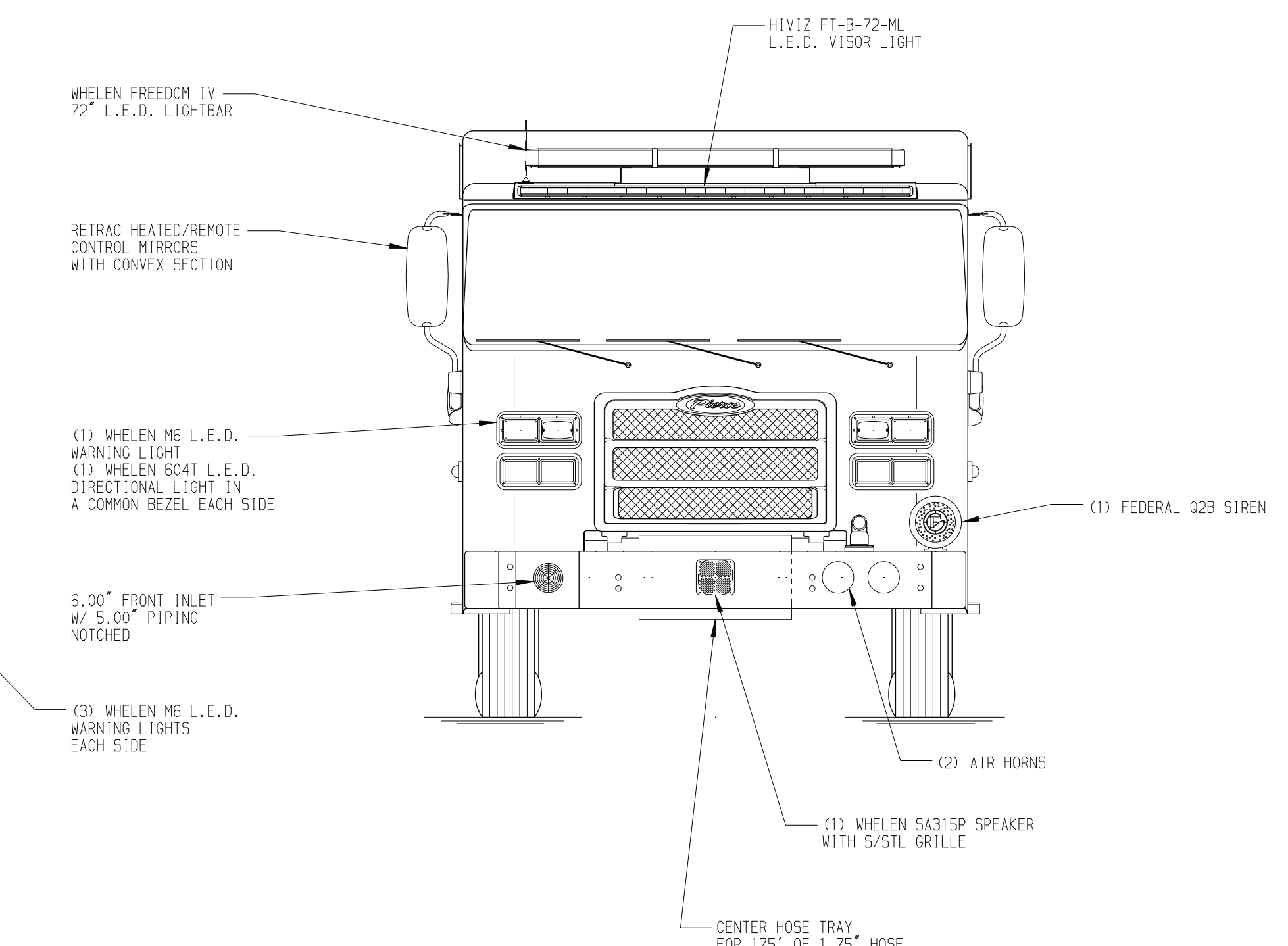
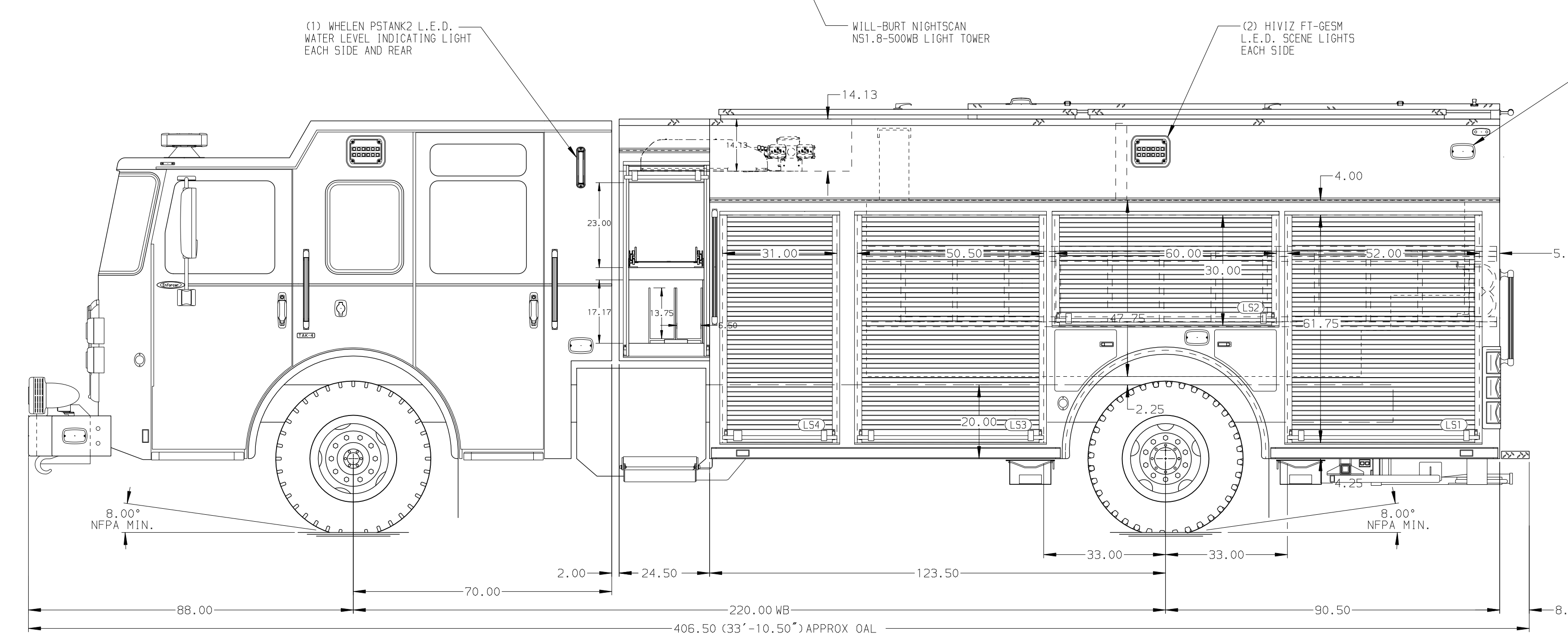
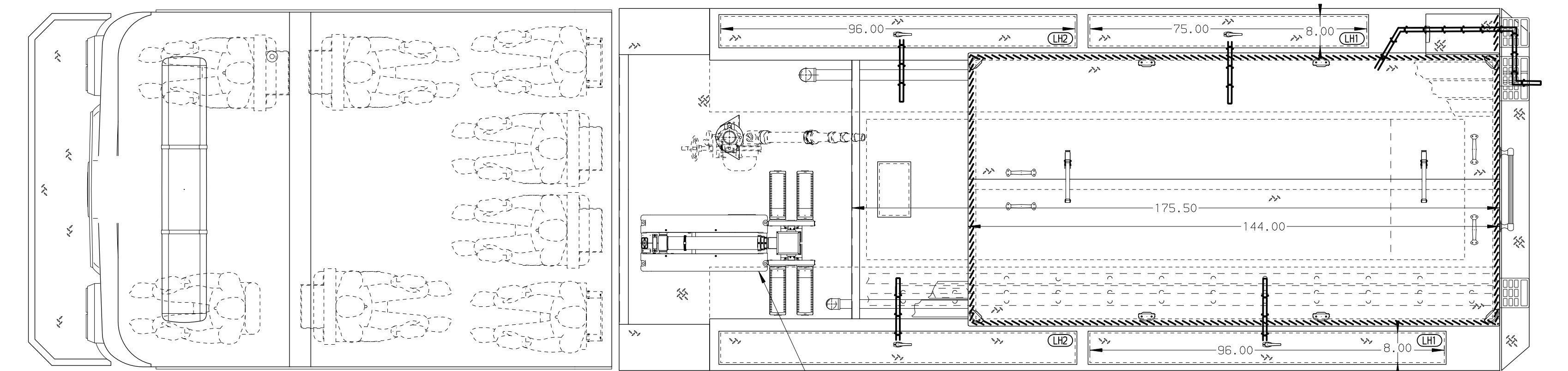
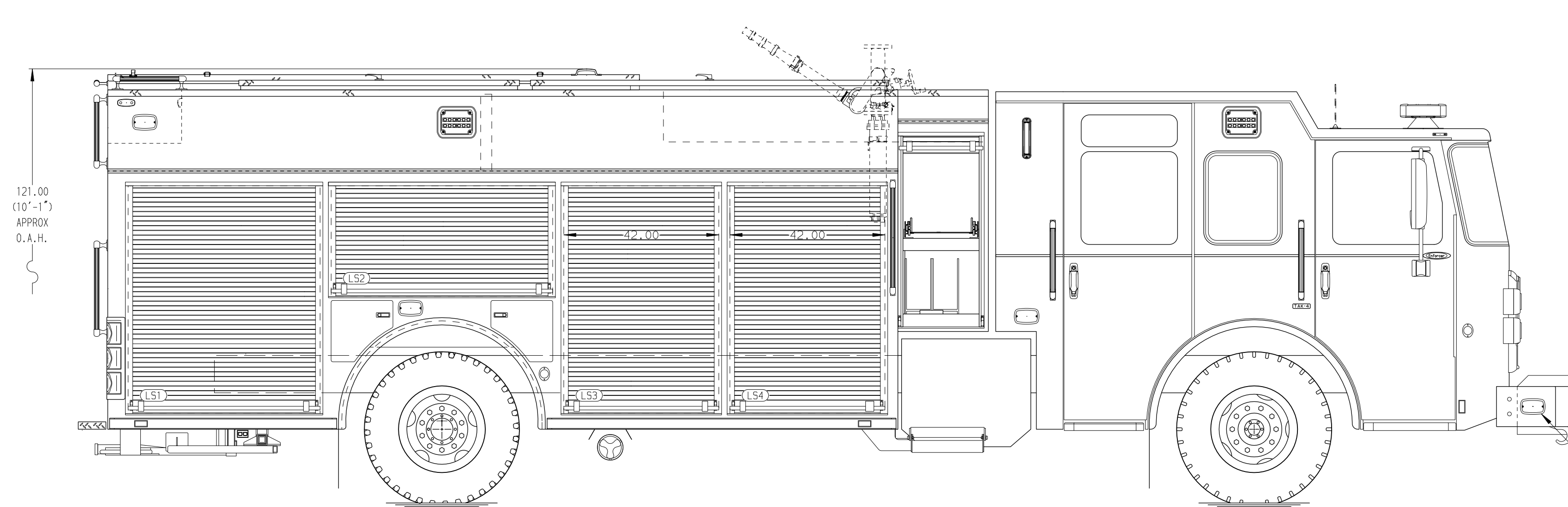
Generator Not Required

## Foam System

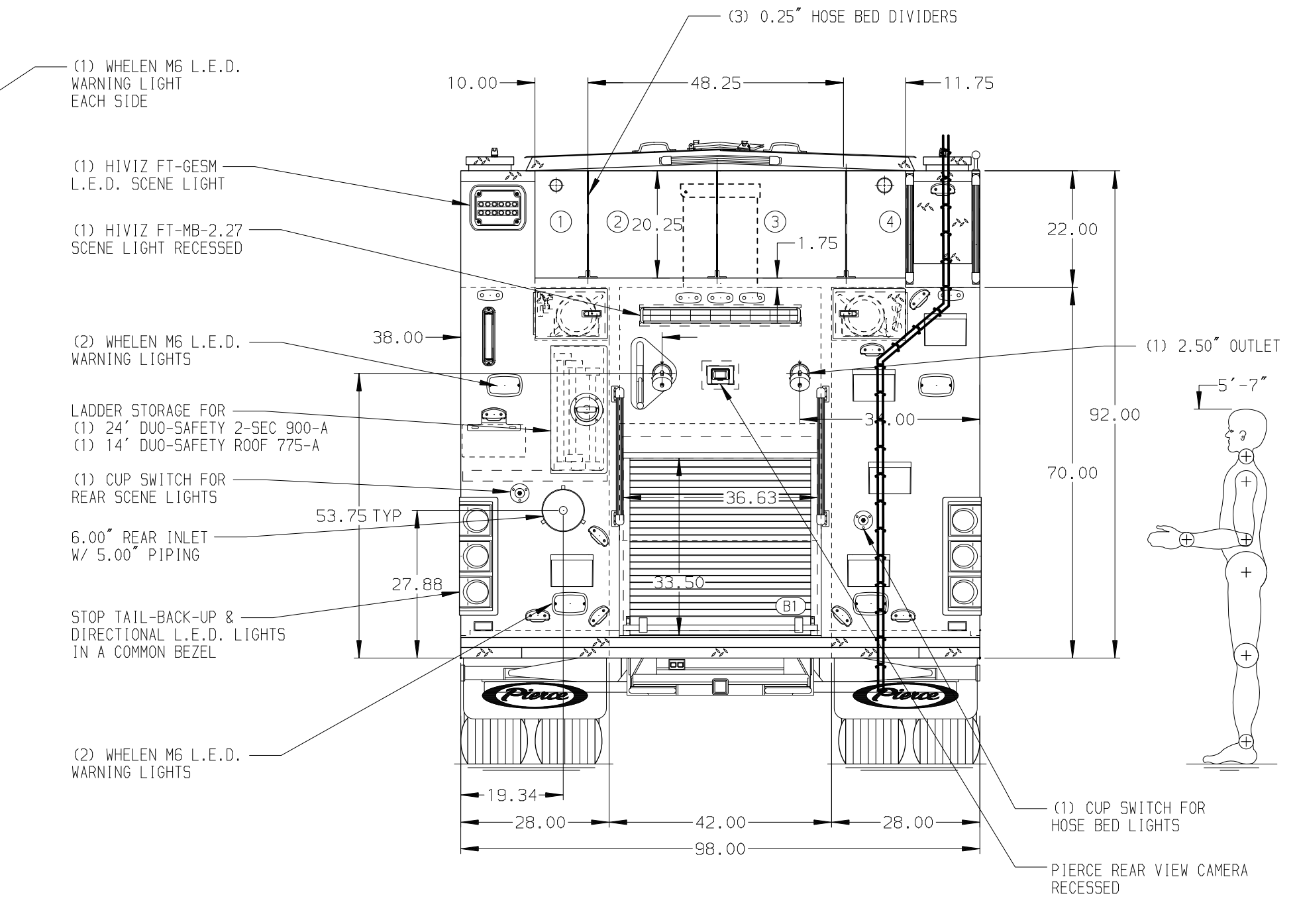
Not Required

## Foam Cell

Not Required



HOSEBED CAPACITY	
BED 1	300' OF 1.75" D.J. POLY HOSE
BED 2	750' OF 5.00" D.J. POLY HOSE
BED 3	750' OF 5.00" D.J. POLY HOSE
BED 4	500' OF 3.00" D.J. POLY HOSE



**NOTE**  
DIMENSIONS SHOWN ARE APPROXIMATE AND ARE SUBJECT TO MINOR DEVIATIONS AS MAY OCCUR OR BE NECESSARY IN CONSTRUCTION. MINOR DETAILS NOT SHOWN.

- ONE 2.50" OUTLET WITH 2.50" PIPING AND SWIVEL LOCATED ON TOP BUMPER LEFT SIDE
- SHORELINE RECEPTACLE WITH KUSSMAUL SUPER AUTO-EJECT LOCATED ON DRIVER SIDE OF THE CAB
- AIR INLET WITH DISCONNECT COUPLING IN THE DRIVER SIDE STEPWELL
- BATTERY CHARGER LOCATED PER ORDER
- BATTERY CHARGE INDICATOR LOCATED ON THE DRIVER SIDE SEAT RISER
- AUTOMATIC TIRE CHAINS
- NORCOLD REFRIGERATOR LOCATED PER SHOP ORDER

REV	DATE	BY	CH	ENFORCER
13FEB24	MMF	COS		CHASSIS DATA
26JAN24	MMF	JKR		MAKE
08NOV23	MMF	JKR		PIERCE
				MODEL
				ENFORCER

		JOB NO.	38988
		SCALE	DATE
TITLE	Pierce Pumper Approval Drawing	DRAWN BY	MMF
FOR	Lyons Fire Company No. 1	CHECKED BY	AMI
DWG NO.	38988AD	SHEET SIZE	SHEET NO.
		D	1 OF 1