

PUMPER BODY
Medium Aluminum 2nd Gen Pumper

CHASSIS
Enforcer Chassis

CHASSIS AXLE, FRONT, CUSTOM
18,000 Lb Dana Axle

AXLE, REAR
27,000 Lb Meritor Axle

ENGINE
450 HP Cummins L9 Engine

TRANSMISSION
Allison 6th Gen, 3000 EVS P

BUMPER
19" Extended Painted Steel

CAB
7010 Enforcer Cab

BODY WATER TANK
750 Gallon New York Style Water Tank

COMPT, PUMPER, REAR
30.75" FF Lap Rear Compt

COMPT, PUMPER, LEFT SIDE
152" RollUp Full Height Front & Rear FDLER

COMPT, PUMPER, RIGHT SIDE
152" RollUp Full Height Front & Rear FDLER

FIRE SUPPRESSION PUMPHOUSE
45" Control Zone Side Mount

PUMP
1500 GPM Waterous CSU

CROSSLAYS, 1.50"
1.50" Crosslays Not Required

CROSSLAYS, 2.50"
2.50" Crosslay Not Required

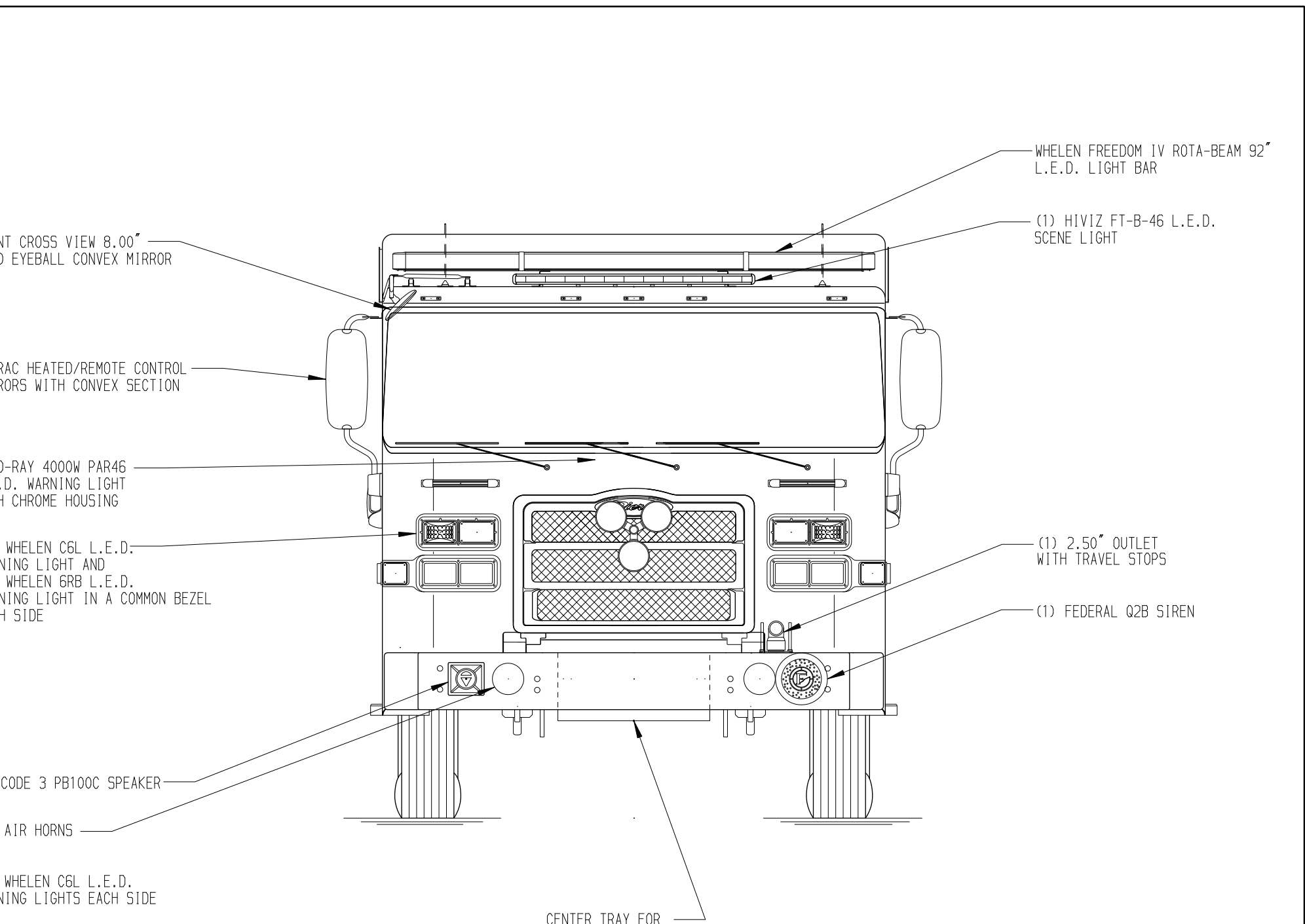
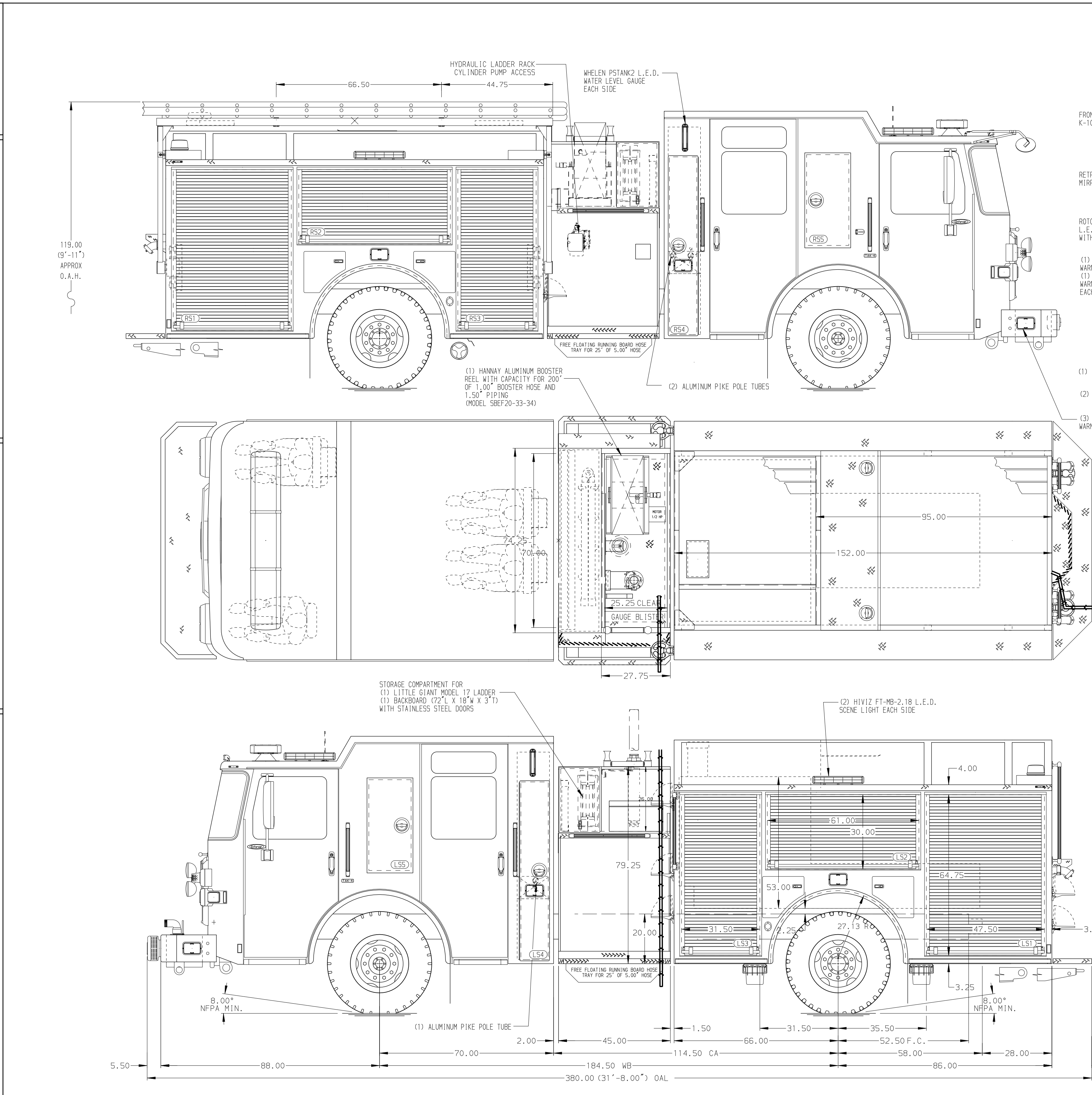
SPEEDLAYS
Speedlays Not Required

GENERATOR
Generator Not Required

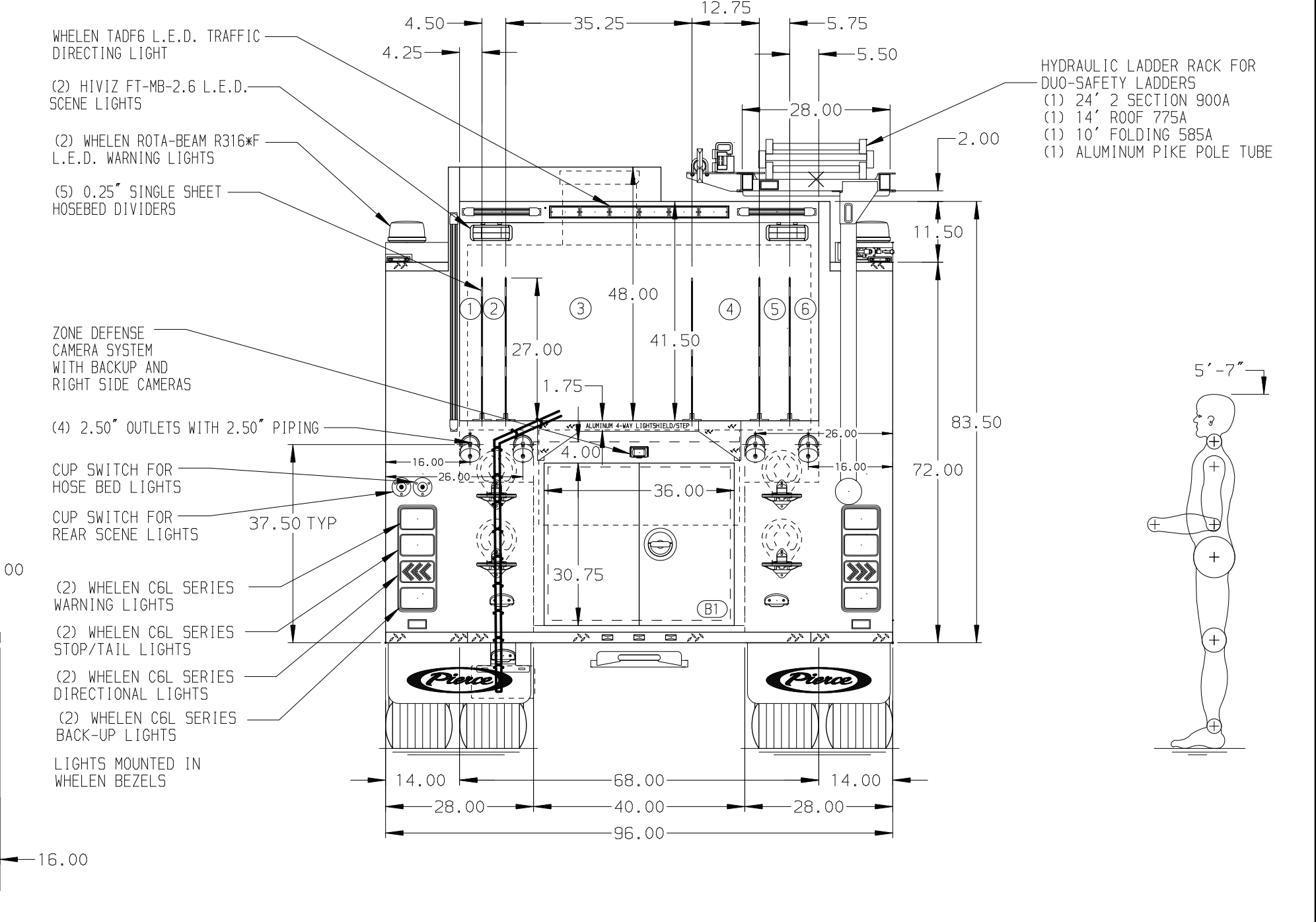
Foam System
Foam System Not Required

Foam Cell
Foam Cell Not Required

NOTE
DIMENSIONS SHOWN ARE APPROXIMATE AND ARE SUBJECT TO MINOR DEVIATIONS AS MAY OCCUR OR BE NECESSARY IN CONSTRUCTION. MINOR DETAILS NOT SHOWN.



HOSEBED CAPACITY	
BED 1	1000' OF 5.00" D.J. POLY HOSE
BED 2	1000' OF 3.00" D.J. POLY HOSE



CUSTOMER APPROVAL				
APPROVED BY:				
DATE:				
REV	DATE	BY	CH	ENFORCER

		MANUFACTURING INC.		JOB NO.	39005 01-04
TITLE	Pierce Pumper Approval Drawing			SCALE	1:24
MAKE	FOR Springfield Fire Department			DRAWN BY	MMF
MODEL	DWG NO. 39005AD			CHECKED BY	COL
ENFORCER	SHEET NO. 1 OF 1			SHEET SIZE	D