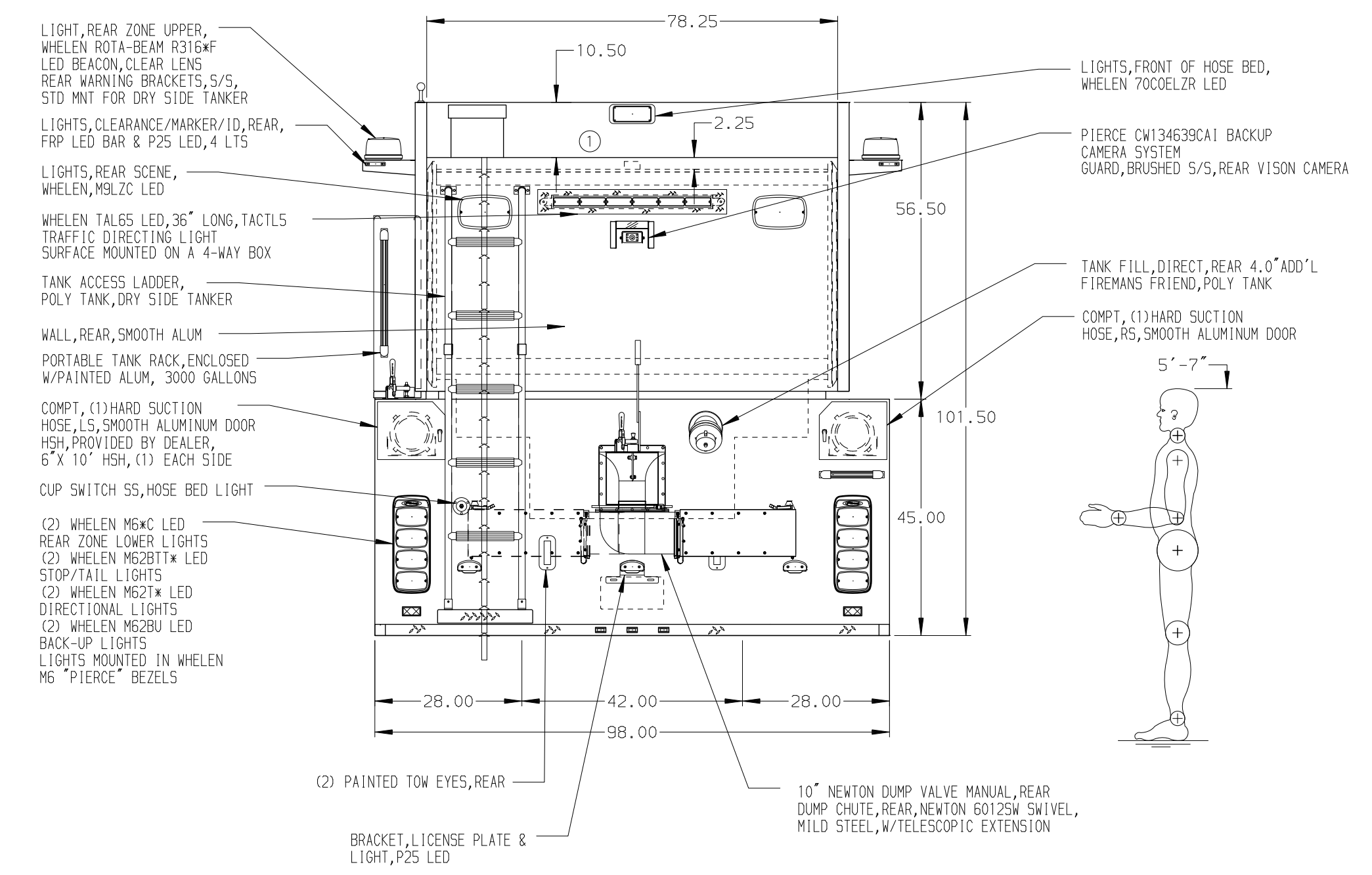
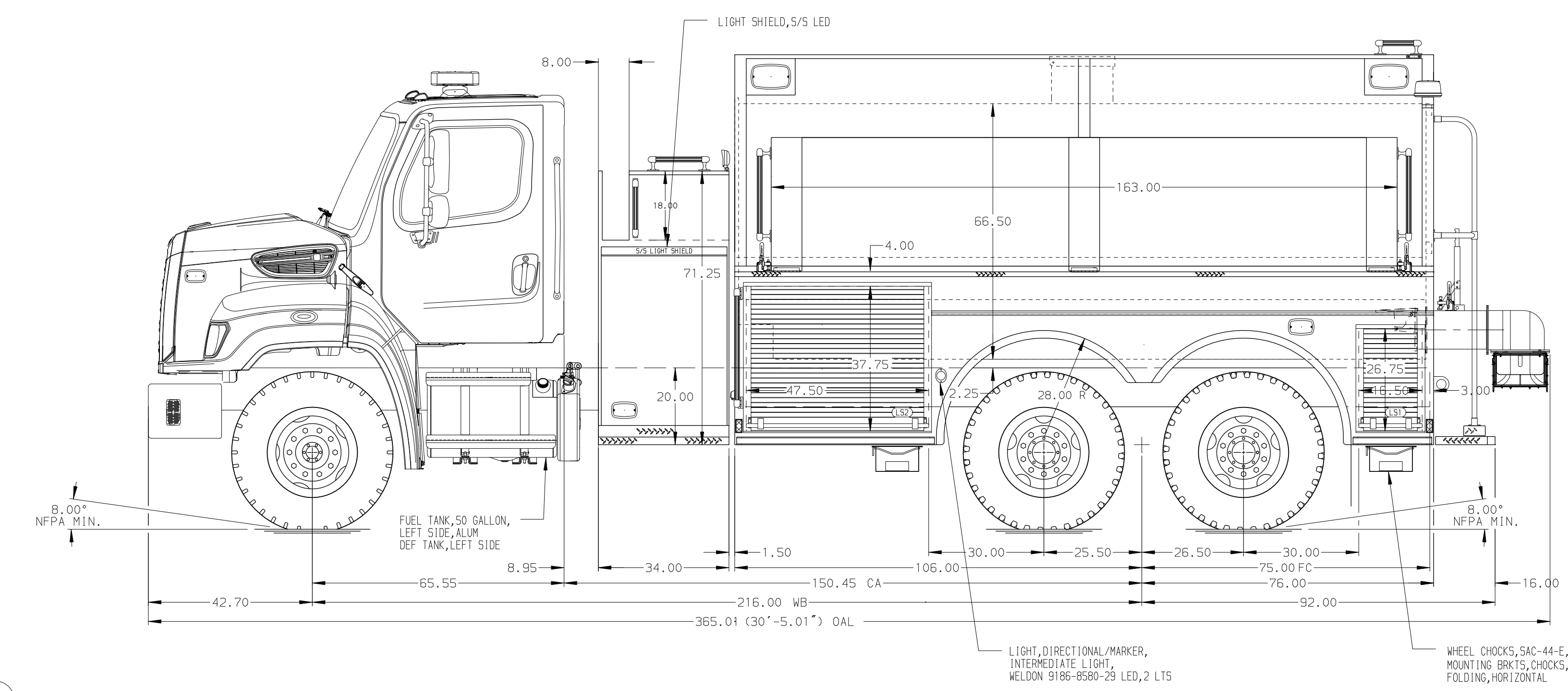


HOSEBED CAPACITIES
 ① 200' OF 2.50" D.J. POLY HOSE



ALUMINUM BODY

NOTE
 DIMENSIONS SHOWN ARE APPROXIMATE AND ARE SUBJECT TO MINOR DEVIATIONS AS MAY OCCUR OR BE NECESSARY IN CONSTRUCTION. MINOR DETAILS NOT SHOWN.

				CHASSIS DATA	TITLE	750-D-3000P, 182" DRYSIDE	JOB NO.	39008
				MAKE	FOR	34" SIDE CONTROL, 10" NEWTON DUMP VALVE, 3000G TANK RACK	SCALE	1:24
04NOV23	RWR	NAS	FL	MODEL	BURLINGTON FIRE DEPARTMENT-1A	BURLINGTON, IOWA	DRAWN BY	JLA
31JUL23	JLA	AJA	108SD	DWG NO.	39008AD		CHECKED BY	AJA
REV	DATE	BY	CH				SHEET SIZE	D
							SHEET NO.	1 OF 1