

PUMPER BODY
Medium Aluminum 2nd Gen Pumper

CHASSIS
Enforcer Chassis

CHASSIS AXLE, FRONT, CUSTOM
20,000 Lb Dana Axle

AXLE, REAR
27,000 Lb Dana Axle

ENGINE
500 HP Cummins X12 Engine

TRANSMISSION
Allison 6th Gen, 4500 EVS P

BUMPER
22" Extended Stainless Steel Painted

CAB
7000 Enforcer Cab

BODY WATER TANK
750 Gallon New York Style Water Tank

COMPT, PUMPER, REAR
30.75" FF Lap Rear Compt

COMPT, PUMPER, LEFT SIDE
152" Lap Full Height Front & Rear, FDLER

COMPT, PUMPER, RIGHT SIDE
152" Lap Low, FDLER

FIRE SUPPRESSION PUMPHOUSE
45" Control Zone Side Mount

PUMP
1500 GPM CXC20

CROSSLAYS, 1.50"
1.50" Crosslays Not Required

CROSSLAYS, 2.50"
2.50" Crosslays Not Required

SPEEDLAYS
1.50" W/Tray Not Required

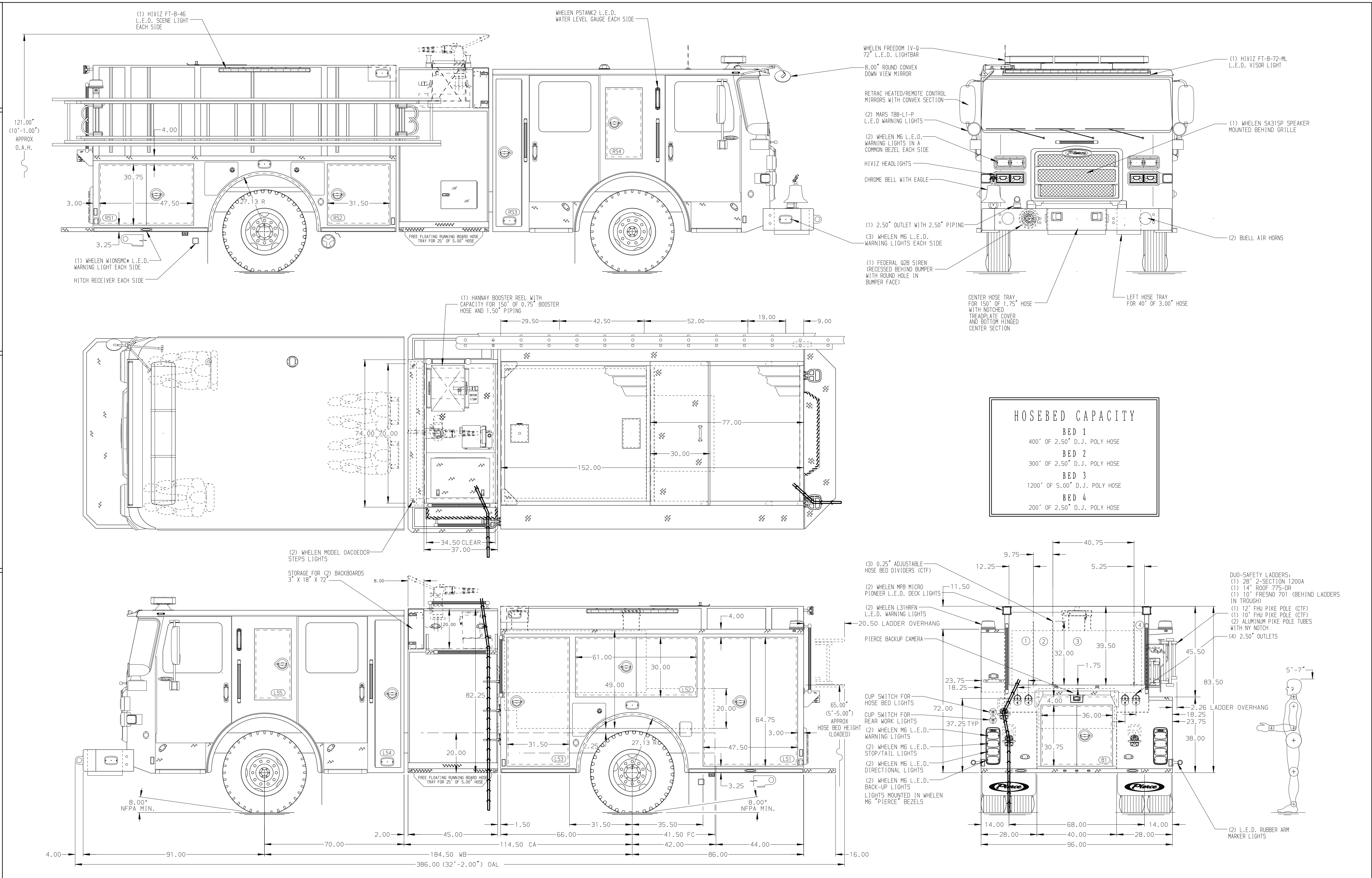
GENERATOR
Generator Not Required

Foam System
Husky 3 Foam System

Foam Cell
40 Gallon Foam Cell Not Reduced

Side Roll and Frontal Protection

NOTE
DIMENSIONS SHOWN ARE APPROXIMATE AND ARE SUBJECT TO MINOR DEVIATIONS AS MAY OCCUR OR BE NECESSARY IN CONSTRUCTION. MINOR DETAILS NOT SHOWN.



Pierce MANUFACTURING INC.

JOB NO. 39065

SCALE 1:24 DATE

TITLE Pierce Pumper Approval Drawing

FOR Homewood Fire Department

DWG NO. 39065AD

SHEET NO. 1 OF 1

03APR24	BTH	CW1	MAKE
18MAR24	BTH	CW1	PIERCE
22JAN24	BTH	AST	MODEL
REV	DATE	BY	CH