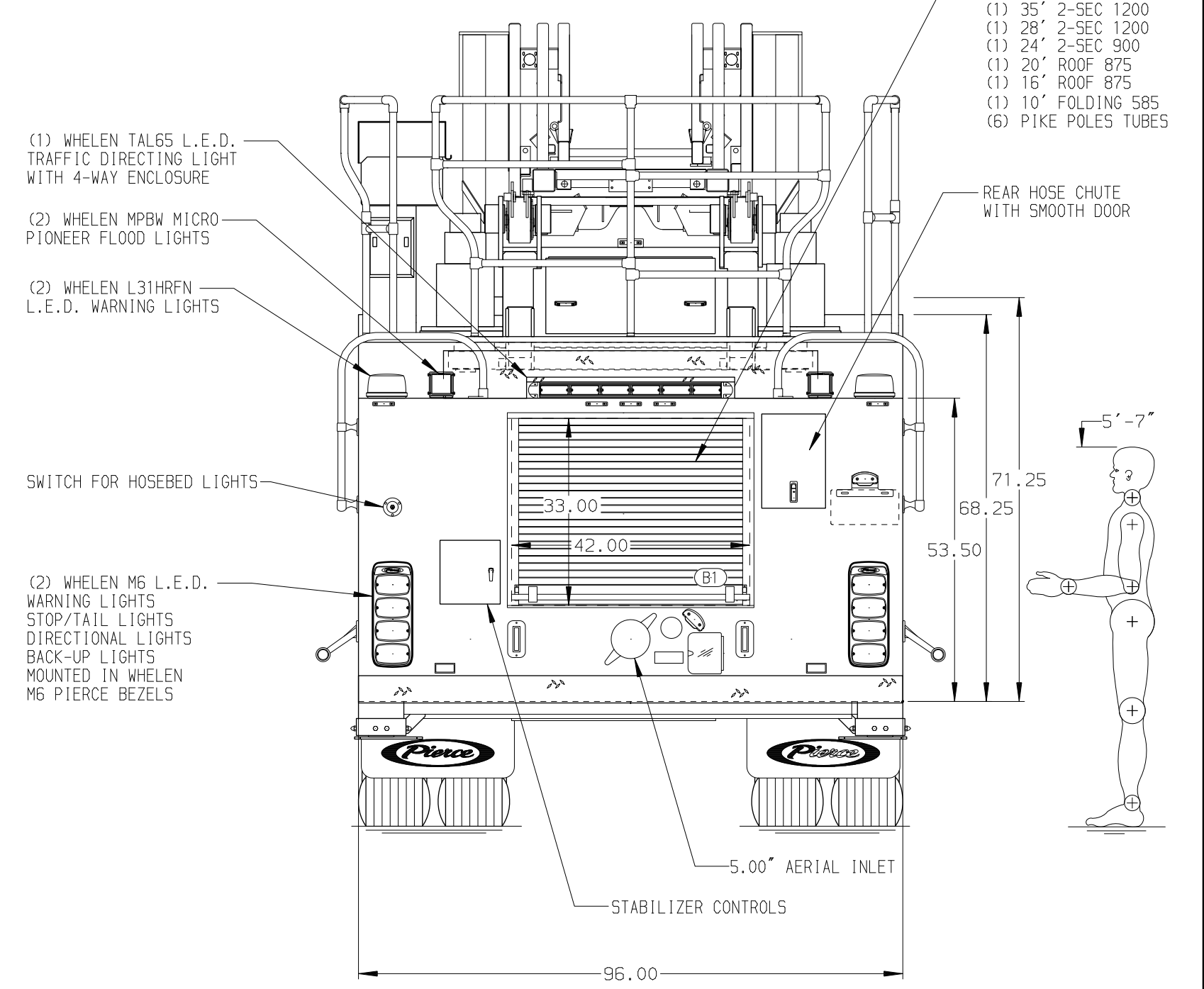
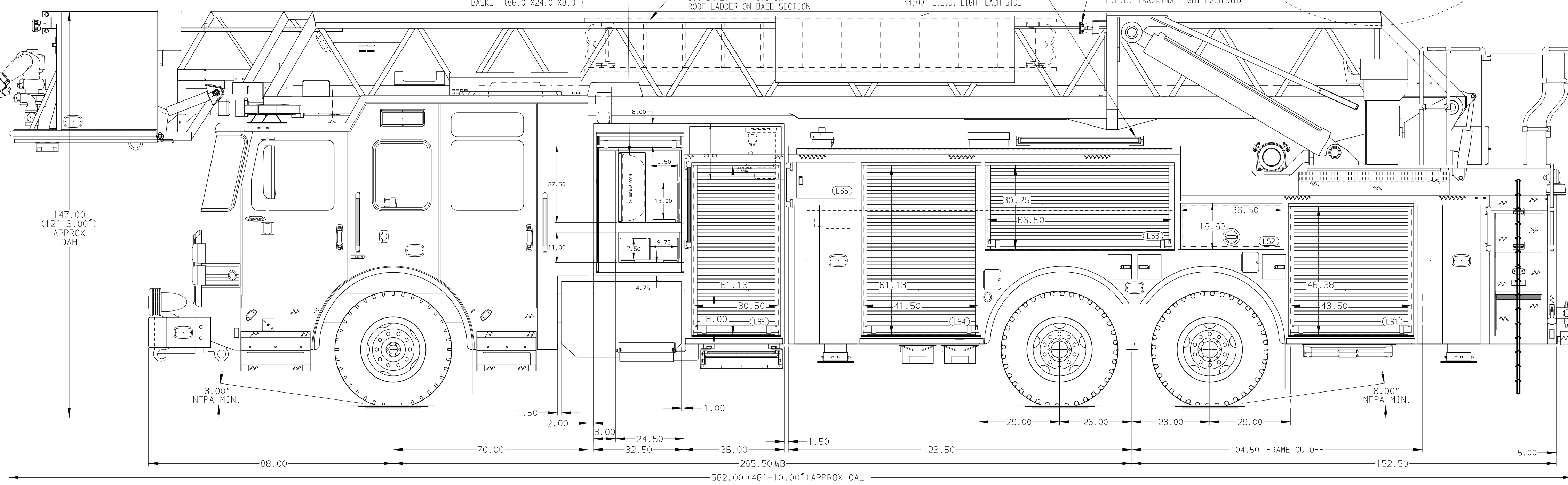


BODY	WATER TANK
100' Steel Platform Alum Body PUC	300 Gallon PAP Notched Poly Water Tank
COMPT, LEFT SIDE FRONT	Foam System
FH/FD RollUp Forward w/o Chute	Husky 3 Single Agent Foam System
COMPT, LEFT SIDE REAR	Foam Cell
FH/FD RollUp Rearward	20 Gallon Foam Cell, Non-Reduced Water, PUC
COMPT, RIGHT SIDE FRONT	
Full Height RollUp Forward	
COMPT, RIGHT SIDE REAR	
Full Height RollUp and Lift-up Rearward	



CHASSIS	CAB	AXLE, FRONT, CUSTOM	TRANSMISSION	PUMPHOUSE	CROSSLAYS, 1.50"	SPEEDLAYS	SAFETY	CUSTOMER APPROVAL	Pierce MANUFACTURING INC.		JOB NO.		
Enforcer Chassis, PUC	7010 Notched Enforcer Cab, PUC	24,000 Lb TAK-4 Axle	Allison 6th Gen, 4500 EVS P	Control Zone, PAL/PAP PUC	(2) 1.50", Poly Trays, 200'	Speedlays Not Required	Side Roll and Frontal Impact Protection	APPROVED BY: _____	TITLE	100' AERIAL PLATFORM AND BODY ASSEMBLY	39130		
605 HP Cummins X15 Engine	19' Extended Painted Steel	58,000 Lb Meritor Axle		2000 GPM Pierce PUC	(1) 2.50", Poly Tray, 200'	Generator Not Required	DATE: _____	SCALE			DATE		
NOTE DIMENSIONS SHOWN ARE APPROXIMATE AND ARE SUBJECT TO MINOR DEVIATIONS AS MAY OCCUR OR BE NECESSARY IN CONSTRUCTION. MINOR DETAILS NOT SHOWN.	1. NO LIMITED RETRACTION REQUIRED		11. ONE REBOARD WALL LOCATED IN COMPARTMENT PER ORDER					CHASSIS DATA	FOR	PIERCE STOCK UNIT APPLETON, WI	DRAWN BY		
	2. ONE 1.50 OUTLET WITH 2.00 PIPING AND SWIVEL LOCATED IN CENTER BUMPER TRAY		12. ONE RECEPTACLE LOCATED IN COMPARTMENT PER ORDER					MAKE			ANZ	09NOV22	
	3. SHORELINE RECEPTACLE WITH KOSMALL SUPER AUTO-EJECT LOCATED ON DRIVER SIDE OF THE CAB		13. TENDR RING LIGHTING ON AERIAL DEVICE					PIERCE			CHECKED BY	NAK	15NOV22
	4. AIR INLET WITH DISCONNECT COUPLING IN THE DRIVER SIDE STEPPLELL		14. FIRE RESEARCH 2-WAY INTERCOM					MODEL			SHEET SIZE	D	SHEET NO.
5. BATTERY CHARGER LOCATED BEHIND DRIVERS SEAT PER ORDER		15. 120V POWER TO AERIAL BASKET					ENFORCER	DWG NO.	39130AD		1 OF 1		
6. BATTERY CHARGE INDICATOR DISPLAYED THROUGH WINDOW BEHIND DRIVERS SEAT PER ORDER		16. 3.00" RAISED AERIAL PEDESTAL											
7. SIX ADJUSTABLE SHELVES LOCATED IN COMPARTMENTS PER ORDER													
8. FOUR FLOOR MOUNTED SLIDE-OUT TRAYS LOCATED IN COMPARTMENTS PER ORDER													
9. DUAL L.E.D. LIGHT STRIPS LOCATED IN COMPARTMENTS PER ORDER													
10. ONE TILT/SLIDE-OUT TRAY LOCATED IN COMPARTMENT PER ORDER													