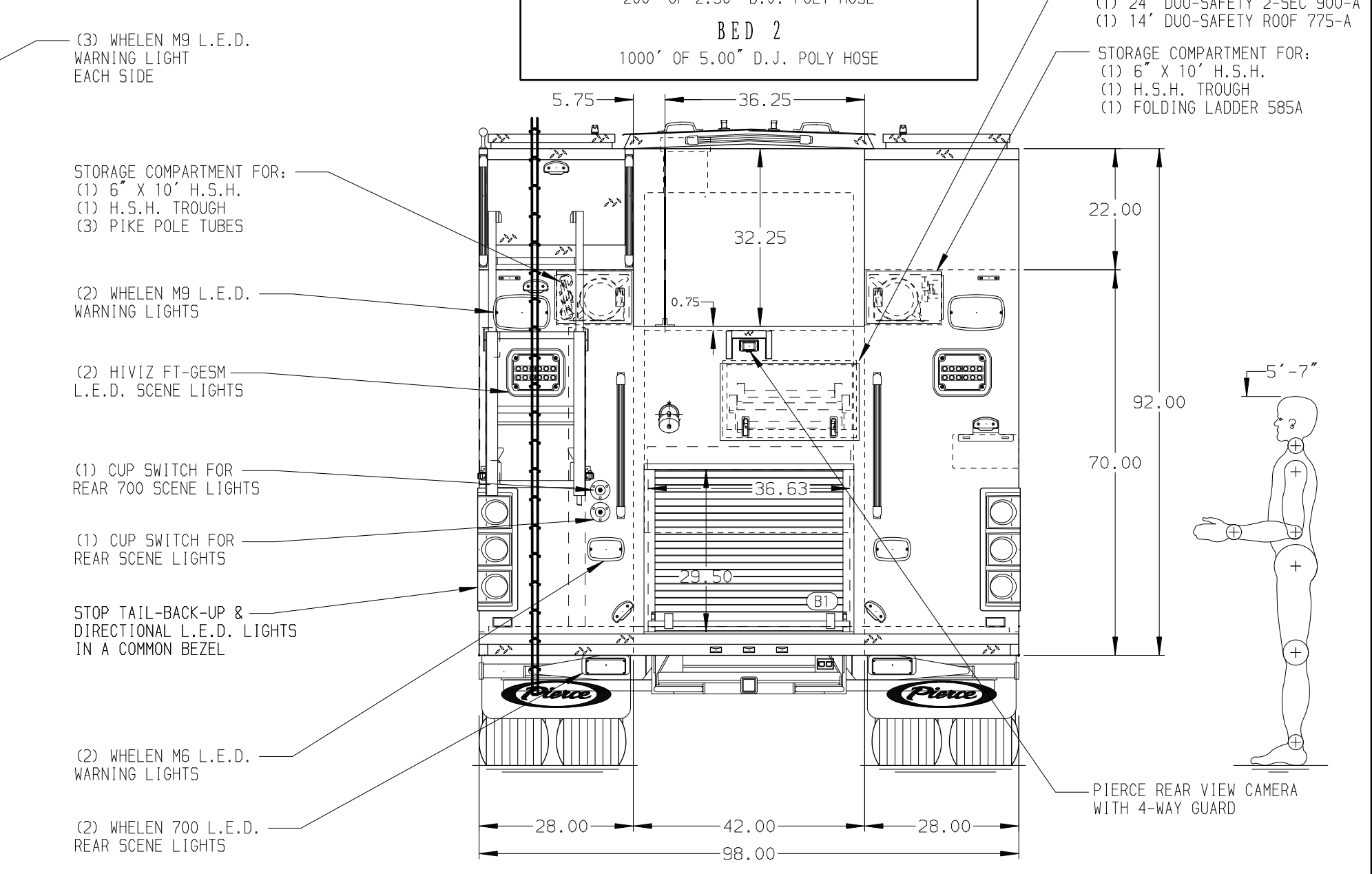
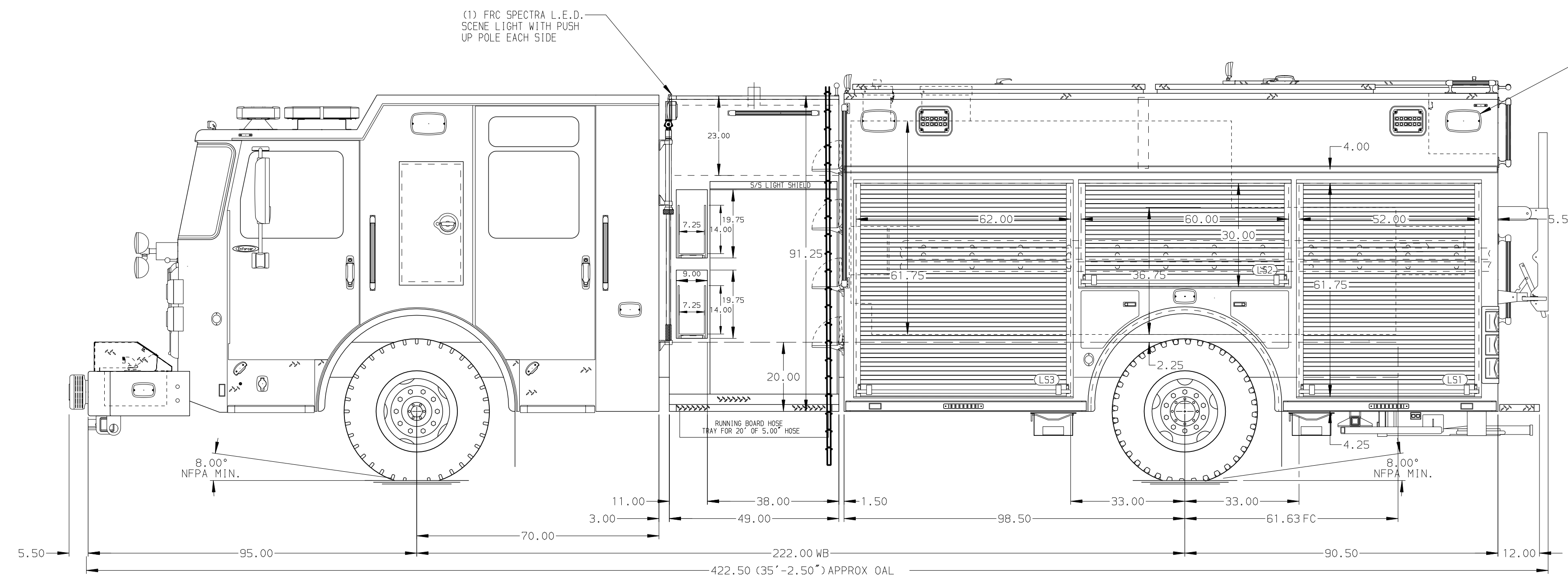


<b>BODY</b> Pumper, HDRP, Aluminum <b>COMPT, LEFT SIDE</b> 189\"/>	<b>WATER TANK</b> 1000 Gallon Poly Water Tank Foam System External Foam System Foam Cell 30 Gallon Foam Cell, Not Reduced Water
---	--

HOSEBED CAPACITY	
<b>BED 1</b> 200' OF 2.50\"/>	<b>BED 2</b> 1000' OF 5.00\"/>



<b>CHASSIS</b> Enforcer Chassis <b>ENGINE</b> 450 HP Cummins L9 Engine	<b>CAB</b> 7010 Enforcer Cab <b>BUMPER</b> 26\"/>	<b>AXLE, FRONT, CUSTOM</b> 20,000 Lb Meritor Axle <b>AXLE, REAR</b> 31,000 Lb Meritor Axle	<b>TRANSMISSION</b> Allison 6th Gen, 3000 EV5 P	<b>PUMPHOUSE</b> 38\"/>	<b>CROSSLAYS, 1.50"</b> 1.50\"/>	<b>SPEEDLAYS</b> (2) 1.50\"/>
---	--	---	--	----------------------------	-------------------------------------	----------------------------------

<b>Pierce MANUFACTURING INC.</b>		JOB NO.	39142
		SCALE	1:24
		DATE	02MAY23
		DRAWN BY	MMF
		CHECKED BY	COL
		SHEET SIZE	D
		SHEET NO.	1 OF 2

**NOTE**  
DIMENSIONS SHOWN ARE APPROXIMATE AND ARE SUBJECT TO MINOR DEVIATIONS AS MAY OCCUR OR BE NECESSARY IN CONSTRUCTION. MINOR DETAILS NOT SHOWN.

- ONE 1.50\"/>

REV	DATE	BY	CH	ENFORCER
18MAR24	MMF	JLL		CHASSIS DATA
05MAR24	MMF	JLL		MAKE
06NOV23	MMF	JLL		PIERCE
06NOV23	MMF	JLL		MODEL
22SEP23	MMF	JLL		

TITLE: Pierce Pumper Approval Drawing  
FOR: Desoto County Fire Rescue  
DWG NO.: 39142AD-SH1