

Pumper, PUC

BODY
Pumper, PUC, Aluminum
CHASSIS
Enforcer Chassis, PUC

CHASSIS
AXLE, FRONT, CUSTOM
19,500 Lb TAK-4 Axle

AXLE, REAR
27,000 Lb Dana Axle

ENGINE
510 HP PACCAR MX13 Engine
TRANSMISSION
Allison 6th Gen, 4000 EVS P

BUMPER
10" Extended Painted Steel

CAB
7010 Enforcer Cab, PUC

BODY

WATER TANK
600 Gallon Poly Water Tank
COMPT, PUMPER, REAR
33.50" FF RollUp Rear Compt w/Tailboard, PUC

COMPT, PUMPER, LEFT SIDE
214" Lap/RollUp Full Height & Depth Front & Rear, PUC

COMPT, PUMPER, RIGHT SIDE
214" Lap/RollUp Full Height & Depth Front & Rear, PUC

FIRE SUPPRESSION

PUMPHOUSE
Control Zone, PUC

PUMP
1500 GPM Pierce PUC

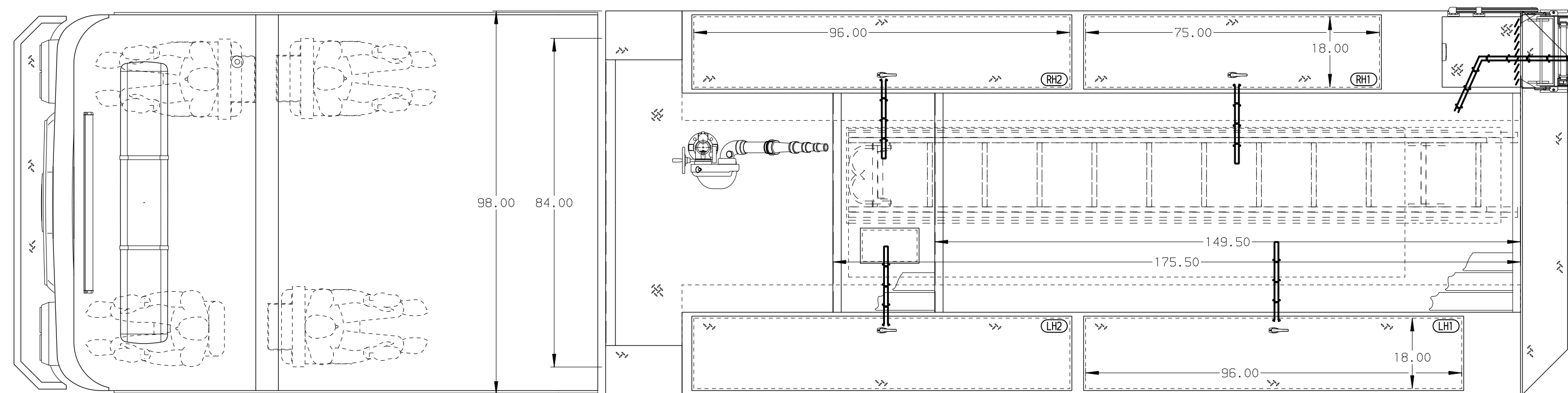
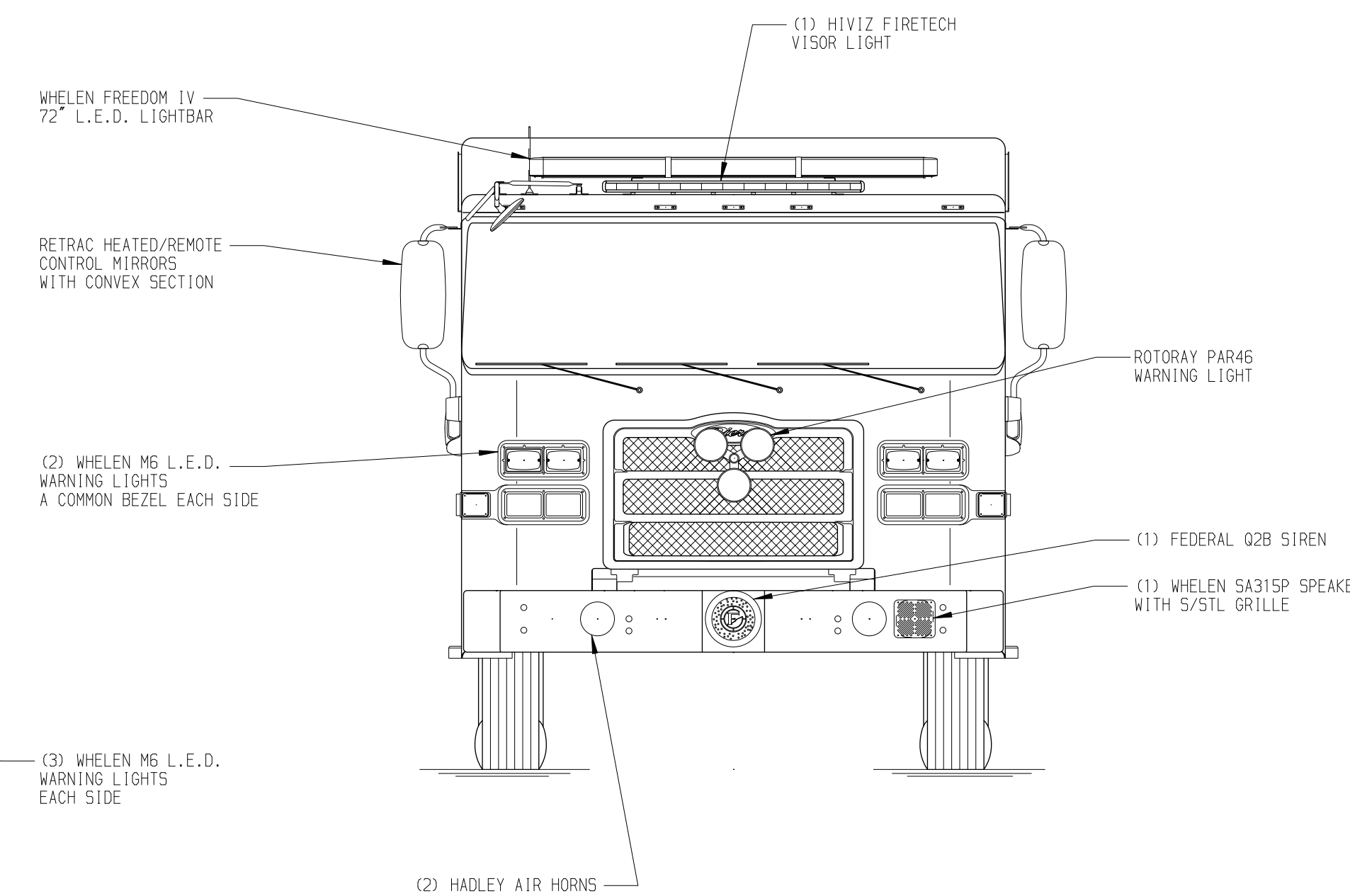
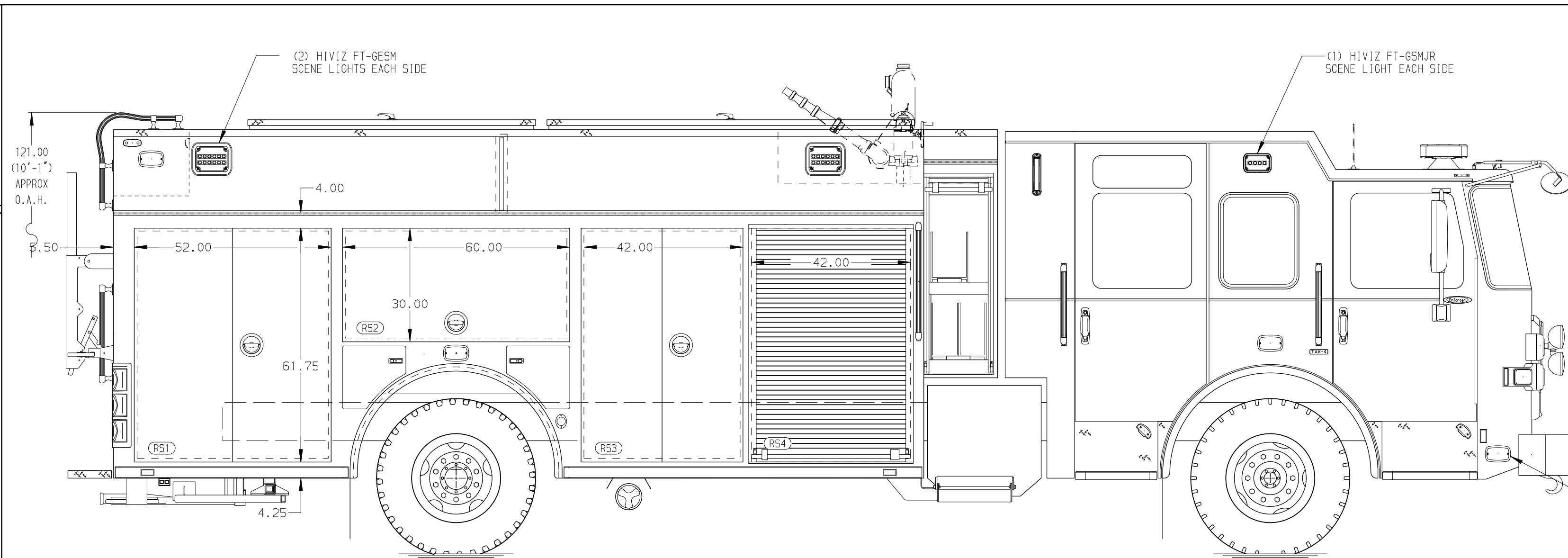
CROSSLAYS, 1.50"
(3) 1.50", Poly Trays

CROSSLAYS, 2.50"
2.50" Crosslay Not Required

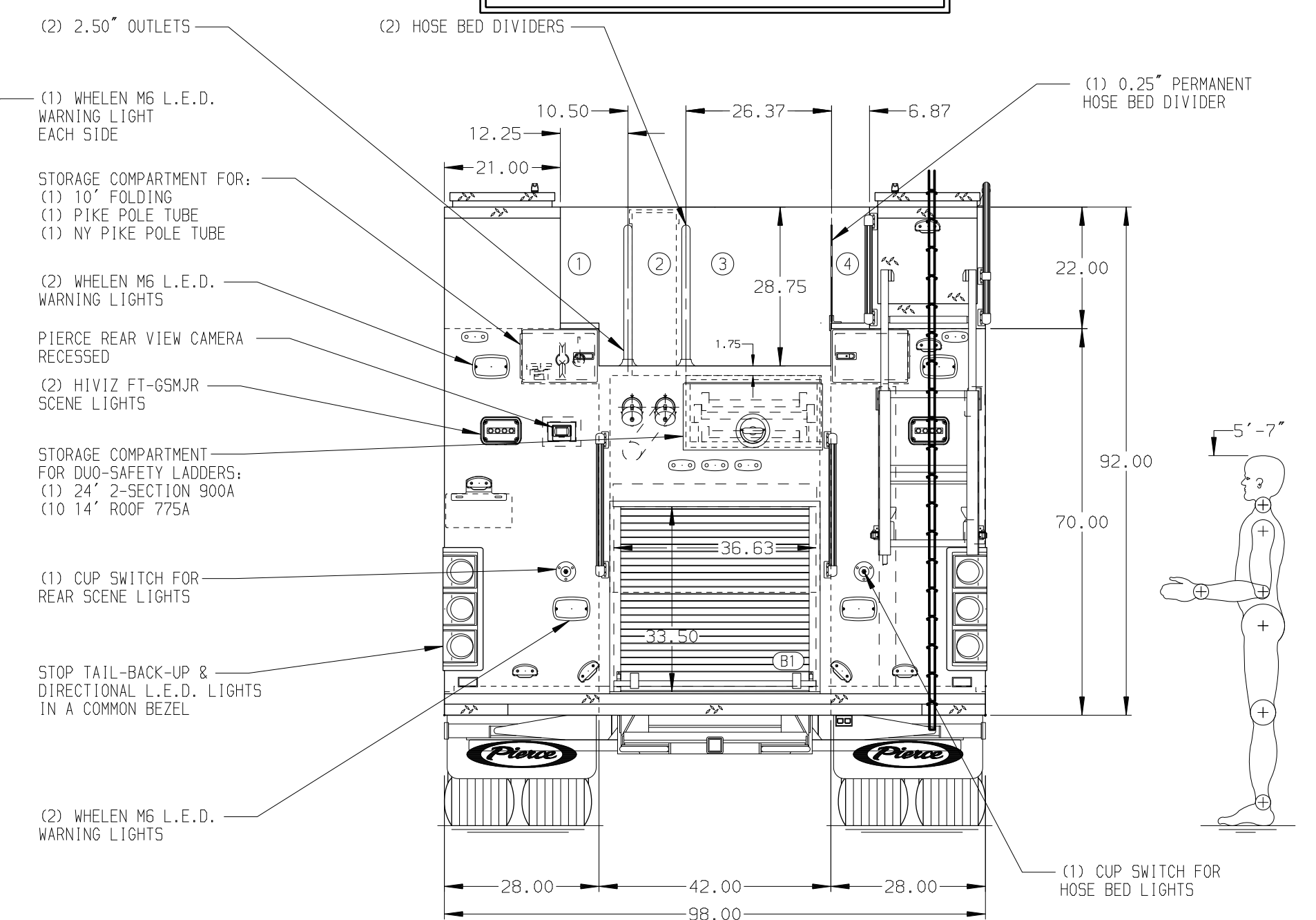
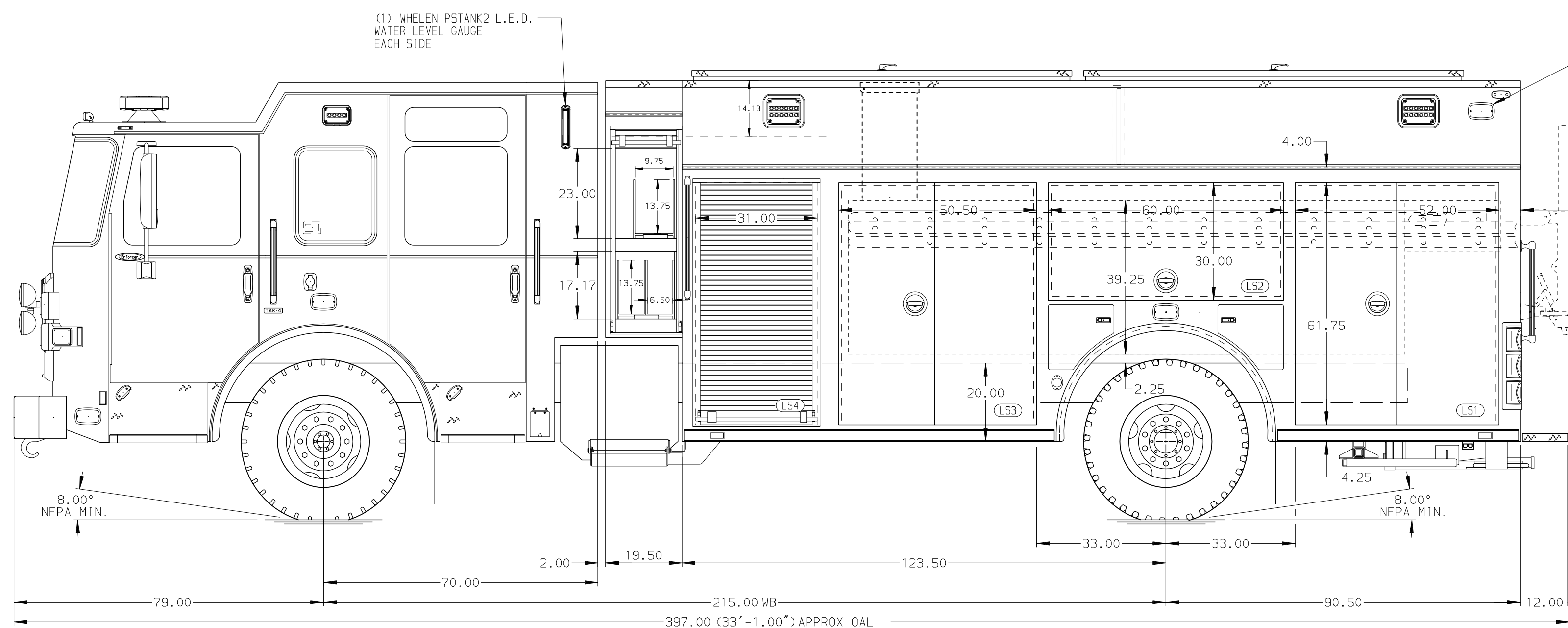
GENERATOR
Generator Not Required

Foam System
Foam System Not Required

Foam Cell
Foam Cell Not Required



HOSEBED CAPACITY	
BED 1	600' OF 2.50" D.J. POLY HOSE
BED 2	600' OF 2.50" D.J. POLY HOSE
BED 3	800' OF 5.00" D.J. POLY HOSE
BED 4	300' OF 3.00" D.J. POLY HOSE



NOTE
DIMENSIONS SHOWN ARE APPROXIMATE AND ARE SUBJECT TO MINOR DEVIATIONS AS MAY OCCUR OR BE NECESSARY IN CONSTRUCTION. MINOR DETAILS NOT SHOWN.

- ONE 1.50 OUTLET WITH 2.00 PIPING AND SWIVEL LOCATED IN CENTER BUMPER TRAY
- SHORELINE RECEPTACLE WITH KUSSMAUL AUTO EJECT LOCATED ON DRIVER SIDE OF THE CAB
- BATTERY CHARGER LOCATED BEHIND DRIVER'S SEAT
- BATTERY CHARGE INDICATOR DISPLAYED THROUGH DRIVER SIDE WINDOW
- EIGHT ADJUSTABLE SHELVES LOCATED PER ORDER
- ALUMINUM PEGBOARD LOCATED PER ORDER

REV	DATE	BY	CH	ENFORCER
27OCT23	MMF	KBO		CHASSIS DATA
13SEP23	MMF	KBO		PIERCE
17AUG23	MMF	KBO		MODEL

Pierce MANUFACTURING INC.		JOB NO.	39147
		SCALE	1:24
		DATE	
TITLE		Pierce PUC Pumper Approval Drawing	
FOR		Omaha Fire Department	
DRAWN BY		MMF	11APR23
CHECKED BY		COL	11APR23
SHEET SIZE		D	SHEET NO. 1 OF 1
DWG NO.		39147AD-SH1	