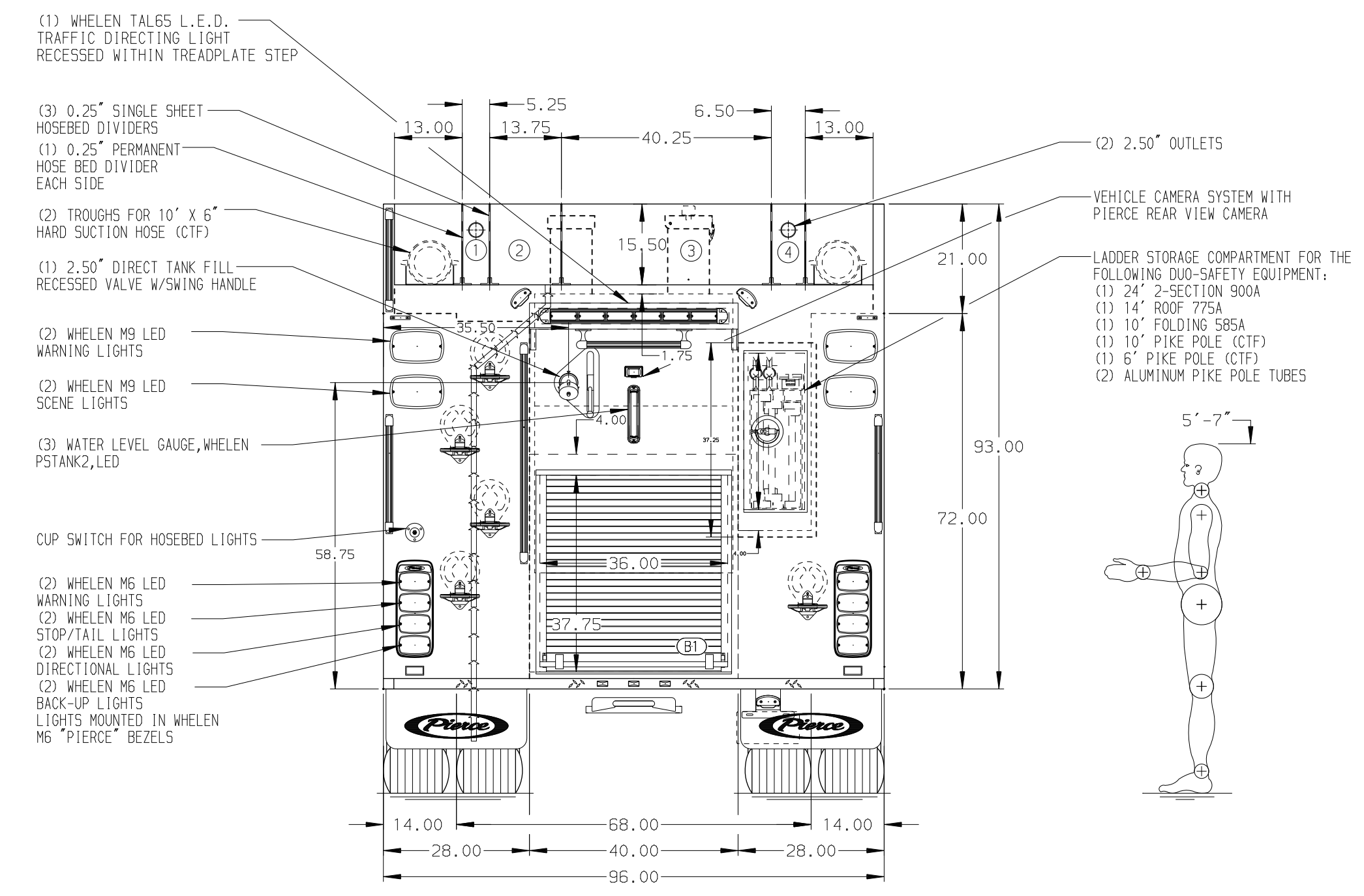
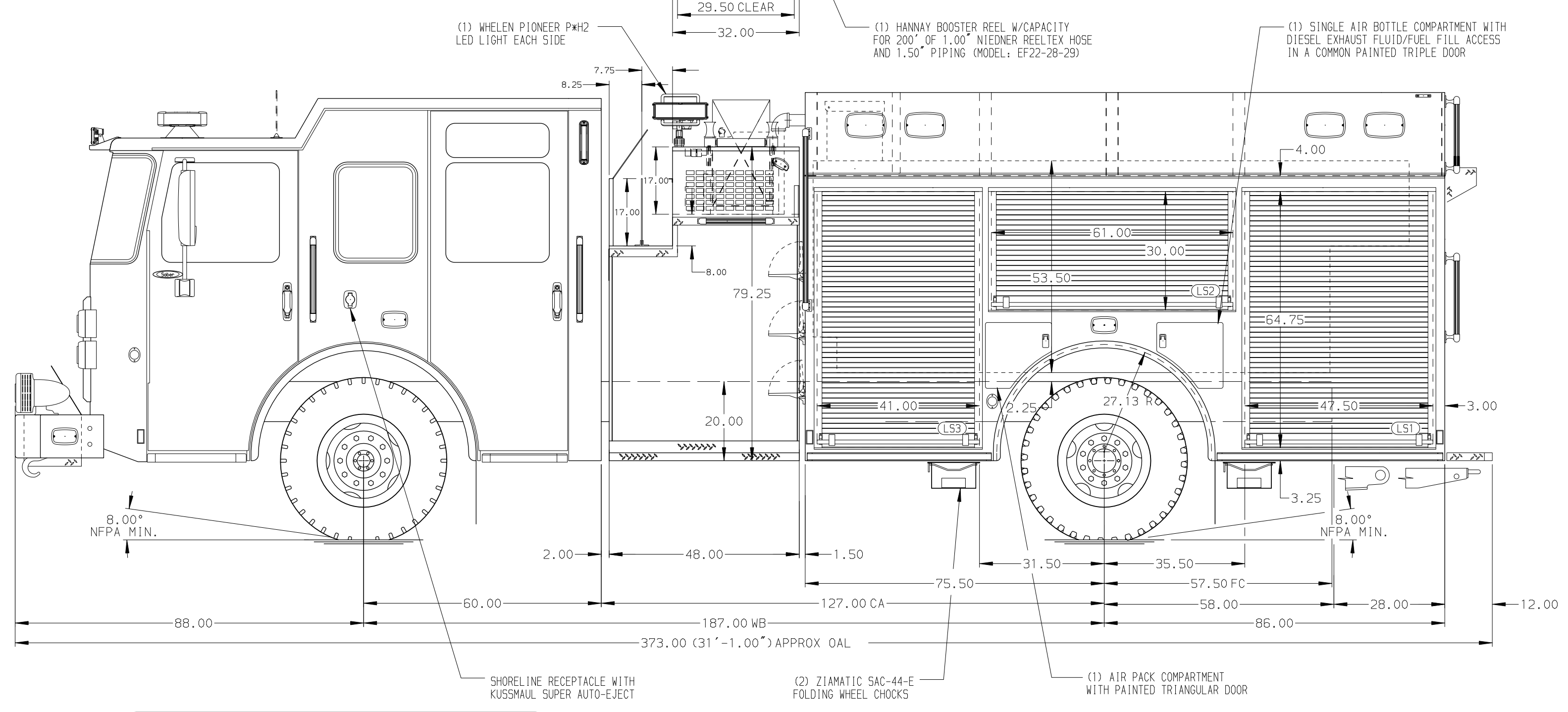


- HOSEBED CAPACITIES
- ① 200' OF 2.50" D.J. POLY HOSE
 - ② 600' OF 2.50" D.J. POLY HOSE
 - ③ 800' OF 5.00" D.J. POLY HOSE
 - ④ 200' OF 1.75" D.J. POLY HOSE



ALUMINUM BODY

MAXIMUM O.A.H. 117"

NOTE
 DIMENSIONS SHOWN ARE APPROXIMATE AND ARE SUBJECT TO MINOR DEVIATIONS AS MAY OCCUR OR BE NECESSARY IN CONSTRUCTION. MINOR DETAILS NOT SHOWN.

REV	DATE	BY	CH	SABER FR
15JUN23	JJB	CCS		
06APR23	KLE	CCS		
10FEB23	ARI	PHA		

		JOB NO.	39302
		SCALE	DATE
TITLE	2000-D-1030P, 1000G WATER W/30G FOAM, 161" BODY LADDERS BTWN TANK & SS, (2) HSH, OUTBOARD SS	DRAWN BY	ARI
FOR	CHESTER COUNTY FIRE SERVICE CHESTER, SOUTH CAROLINA	CHECKED BY	PHA
DWG NO.	39302AD	SHEET SIZE	SHEET NO.
		D	1 OF 1