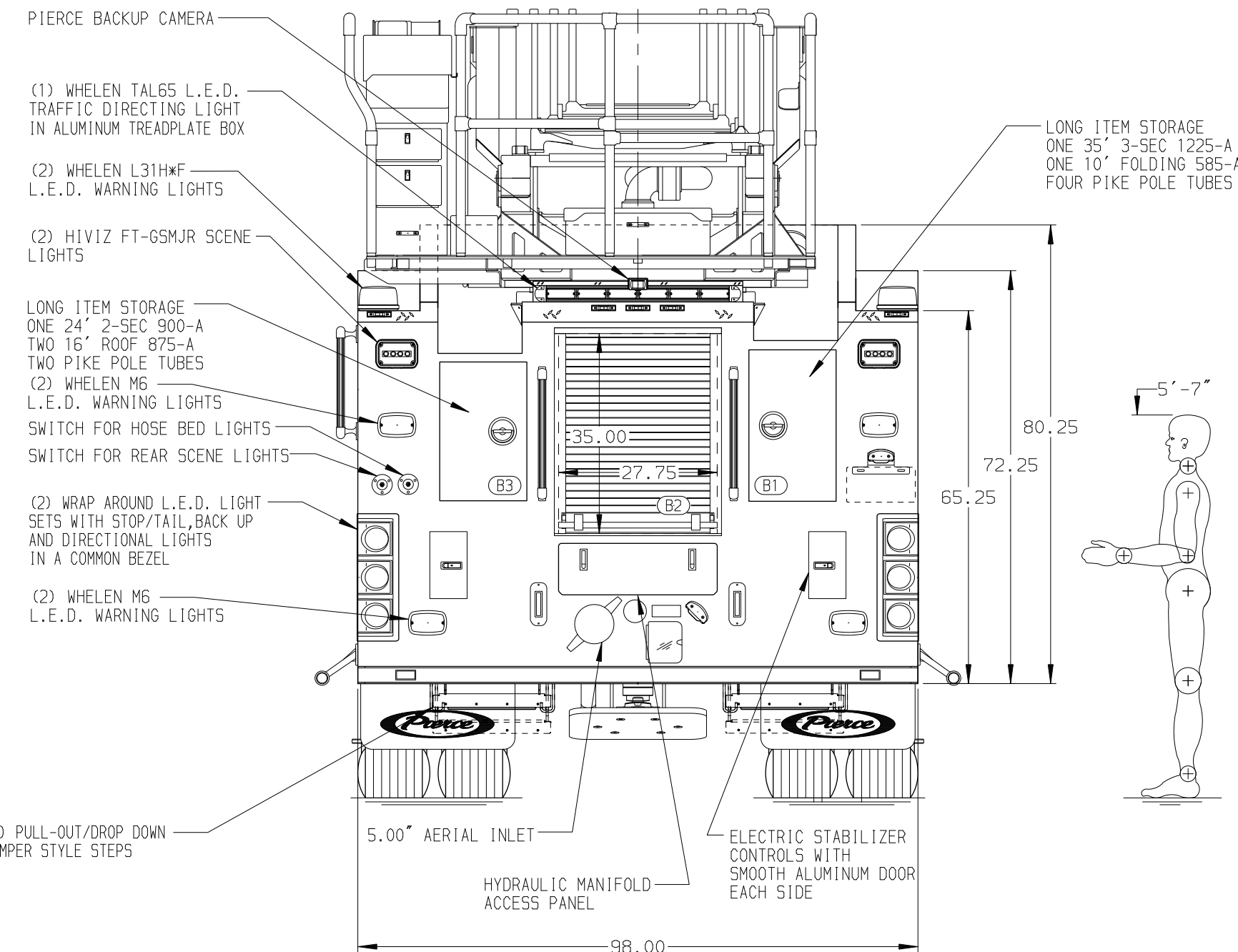
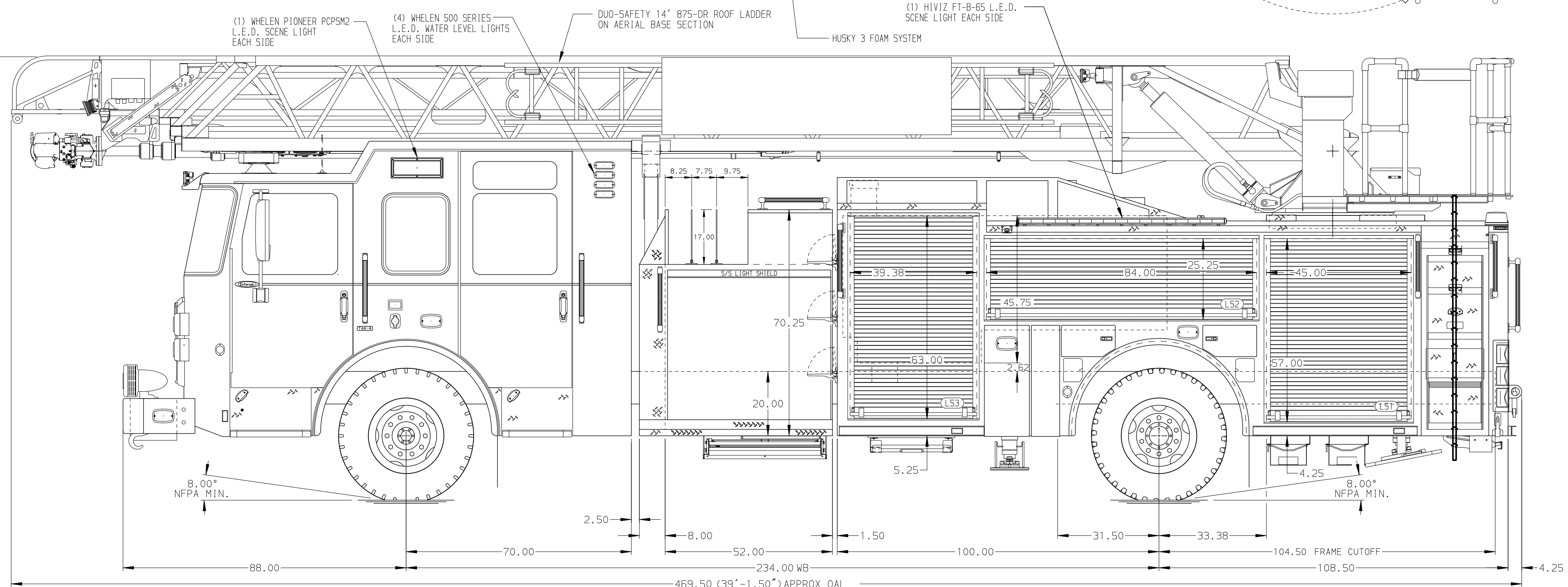


<p>BODY 107' ASL Aluminum Body</p> <p>COMPT, LEFT SIDE FRONT Full Height RollUp Forward</p> <p>COMPT, LEFT SIDE REAR Full Height RollUp Rearward</p> <p>COMPT, RIGHT SIDE FRONT Full Height RollUp Forward</p> <p>COMPT, RIGHT SIDE REAR Full Height RollUp Rearward</p>	<p>WATER TANK 500 Gallon Poly Water Tank</p> <p>Foam System Husky 3 Single Agent Foam System</p> <p>Foam Cell 20 Gallon Foam Cell, Non Reduced Water</p>
---	---



<p>CHASSIS Enforcer Chassis 450 HP Cummins L9 Engine</p>	<p>CAB 7010 Enforcer Notched Cab 19\" Extended Painted Steel</p>	<p>AXLE, FRONT, CUSTOM 22,800 Lb TAK-4 Axle</p> <p>AXLE, REAR 33,500 Lb Meritor Axle</p>	<p>TRANSMISSION Allison 6th Gen, 3000 EV5 P</p>	<p>PUMPHOUSE 52\" Control Zone Side Mount 2000 GPM Waterous CSU</p>	<p>CROSSLAYS, 1.50\" (2) 1.50\" Standard Capacity</p> <p>CROSSLAYS, 2.50\" (1) 2.50\" Standard Capacity</p>	<p>SPEEDLAYS Speedlays Not Required GENERATOR Generator Not Required</p>	<p>SAFETY Side Roll and Frontal Impact Protection</p>	<p>CUSTOMER APPROVAL APPROVED BY: _____ DATE: _____</p>	<p>Pierce MANUFACTURING INC.</p>	<p>JOB NO. 39435</p> <p>SCALE 1:24</p> <p>DATE</p>
<p>NOTE DIMENSIONS SHOWN ARE APPROXIMATE AND ARE SUBJECT TO MINOR DEVIATIONS AS MAY OCCUR OR BE NECESSARY IN CONSTRUCTION. MINOR DETAILS NOT SHOWN.</p>										
<p>1. ONE 1.50\" OUTLET WITH 2.00\" PIPING AND SWIVEL LOCATED IN CENTER BUMPER TRAY 2. SHOVELLINE RECEPTACLE WITH KUSSMAUL SUPER AUTO-EJECT LOCATED ON DRIVER SIDE OF THE CAB 3. AIR INLET WITH DISCONNECT COUPLING IN THE DRIVER SIDE STEPWELL 4. BATTERY CHARGER LOCATED BEHIND DRIVER SEAT 5. BATTERY CHARGE INDICATOR LOCATED ON DRIVERS SIDE CAB 6. DUAL L.E.D. LIGHT STRIPS LOCATED IN HOSE BED 7. SIX ADJUSTABLE SHELVES LOCATED IN COMPARTMENTS PER ORDER 8. THREE FLOOR MOUNTED SLIDE-OUT TRAYS LOCATED IN COMPARTMENTS PER ORDER 9. NON-RAISED AERIAL PEDESTAL 10. 1500 GPM HIGH FLOW WATERWAY 11. LIMITED RETRACTION NOT REQUIRED 12. MOUNTING PROVISIONS FOR FRONT INLET 13. RUNG LIGHTING ON AERIAL LADDER 14. ONE CTECH CABINET LOCATED IN COMPARTMENT PER ORDER</p>										
<p>FOR PIERCE FIELD UNIT APPLETON, WI</p> <p>DWG NO. 39435AD</p> <p>SHEET NO. 1 OF 1</p>										