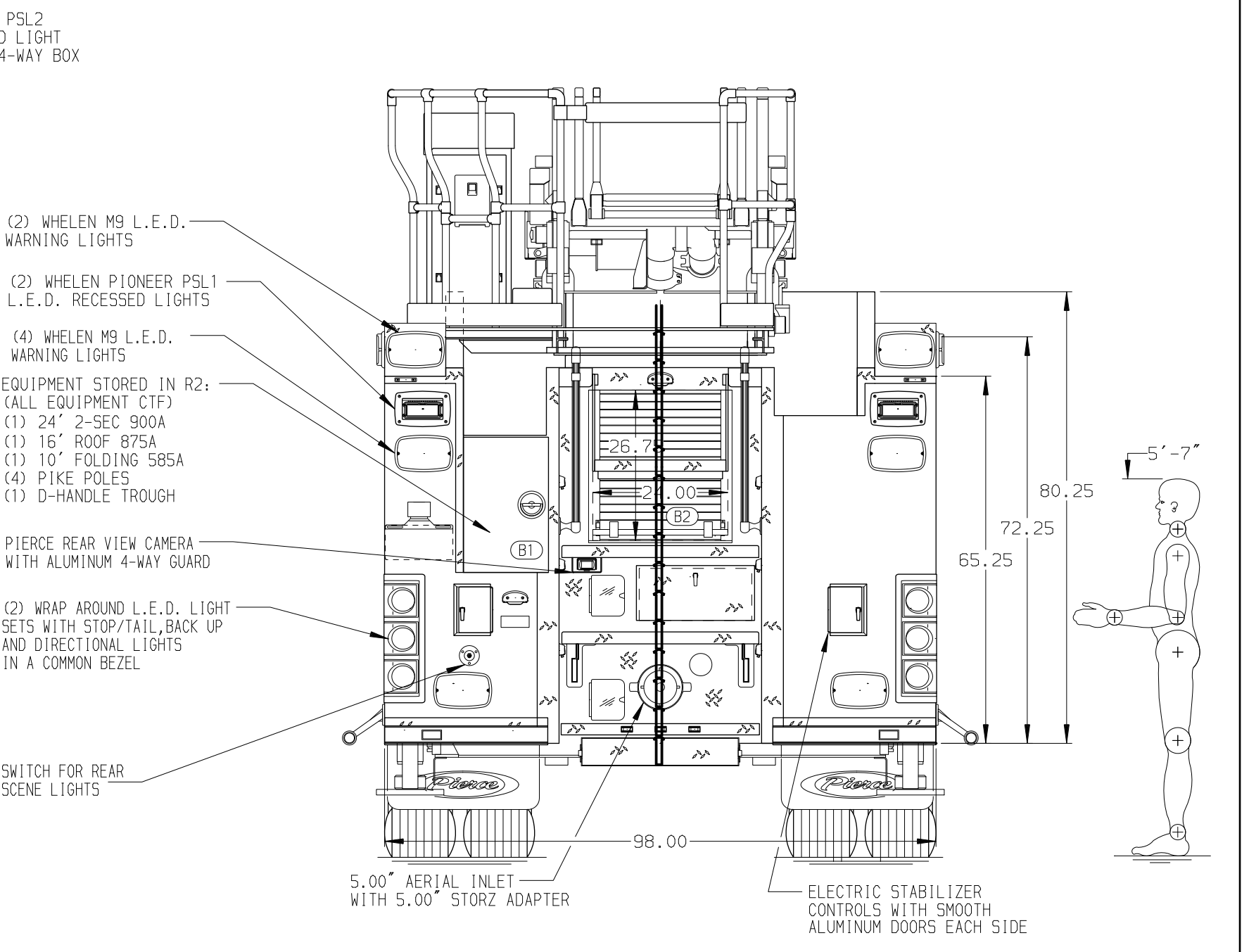
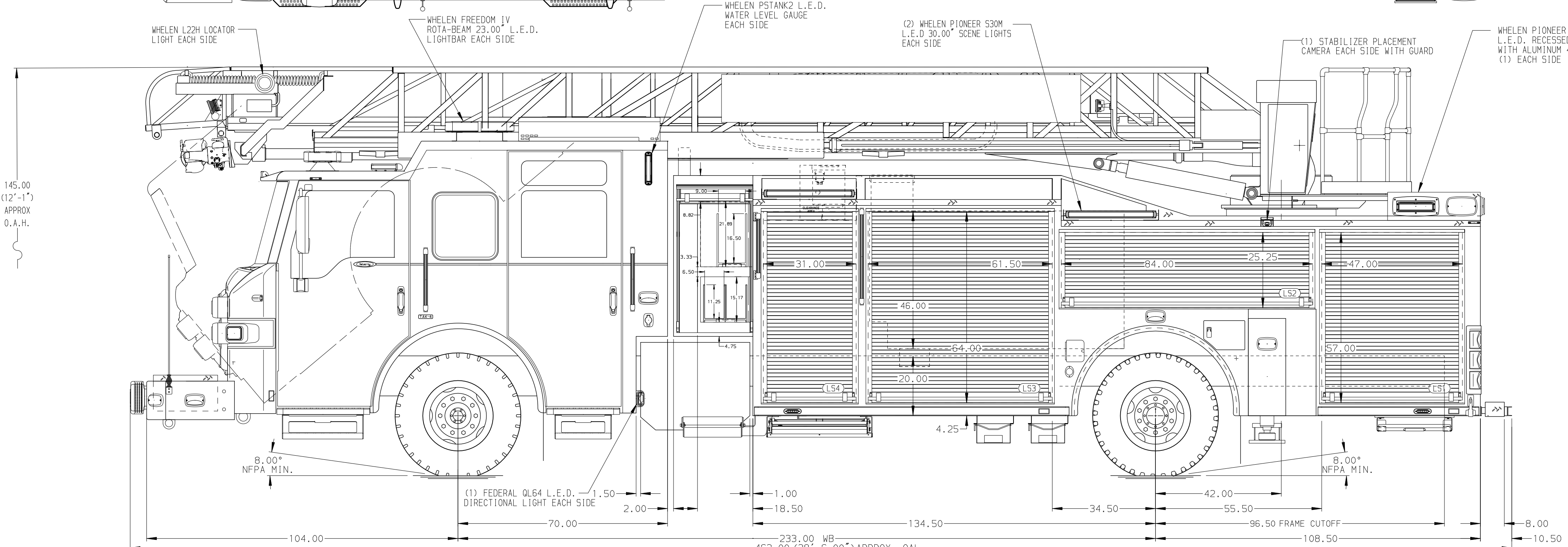


BODY	WATER TANK
75' HAL Aluminum Body	470 Gallon Poly Water Tank
COMPT, LEFT SIDE FRONT	Foam System
Full Height RollUp Forward	Husky 3 Single Agent Foam System
COMPT, LEFT SIDE REAR	Foam Cell
Full Height RollUp Rearward	30 Gallon Foam Cell, Reduced Water
COMPT, RIGHT SIDE FRONT	
Full Height Special Depth RollUp Forward	
COMPT, RIGHT SIDE REAR	
Full Height Special Depth RollUp Rearward	



CHASSIS Velocity Chassis ENGINE 500 HP Cummins X12 Engine	CAB 7010 Velocity Cab BUMPER 26" Extended Under Slung Painted	AXLE, FRONT, CUSTOM 24,000 Lb Dana Axle AXLE, REAR 33,500 Lb Meritor Axle	TRANSMISSION Allison 6th Gen, 4000 EV5 P	PUMPHOUSE Control Zone, PAL/PAP PUC PUMP 1500 GPM Pierce PUC	CROSSLAYS, 1.50" (2) 1.50" Standard Capacity CROSSLAYS, 2.50" (1) 2.50", Poly Tray, 200'	SPEEDLAYS Speedlays Not Required GENERATOR Generator Not Required	SAFETY Side Roll and Frontal Impact Protection
NOTE							
DIMENSIONS SHOWN ARE APPROXIMATE AND ARE SUBJECT TO MINOR DEVIATIONS AS MAY OCCUR OR BE NECESSARY IN CONSTRUCTION. MINOR DETAILS NOT SHOWN.		1. 14" LIMITED RETRACTION REQUIRED 2. ONE 1.50" OUTLET WITH 2.00" PIPING AND SWIVEL LOCATED IN CENTER BUMPER TRAY. 3. SHORELINE RECEPTACLE WITH KUSSMALL SUPER AUTO-EJECT LOCATED ON DRIVER SIDE OF THE CAB 4. AIR INLET WITH DISCONNECT COUPLING IN THE DRIVER SIDE STEPPLELL 5. BATTERY CHARGER LOCATED PER ORDER 6. BATTERY CHARGE INDICATOR LOCATED ON THE DRIVER SIDE SEAT RISER 7. SIX ADJUSTABLE SHELVES LOCATED PER ORDER 8. THREE SLIDE-OUT TRAYS LOCATED PER ORDER 9. 1.50" RAISED AERIAL PEDESTAL 10. 1500 GPM HIGH FLOW WATERWAY		11. ONSPOT AUTOMATIC TIRE CHAINS. 12. RING LIGHTING PER ORDER 13. TWO TILT/SLIDE-OUT TRAYS PER ORDER 14. THREE FLOOR MOUNTED SLIDE-OUT TRAYS PER ORDER 15. ONE CTECH (4) DRAWER ASSEMBLY PER ORDER 16. ONE SWING-OUT TOOLBOARD PER ORDER 17. TWO VERTICAL PARTITIONS PER ORDER 18. FOUR 120V RECEPTACLES PER ORDER			

		JOB NO.	39446
		SCALE	DATE
TITLE	75 AERIAL LADDER & BODY ASSEMBLY	DRAWN BY	LWE
FOR	HAZELWOOD FIRE DEPARTMENT HAZELWOOD, MO	CHECKED BY	NAK
DWG NO.	39446AD	SHEET SIZE	D
VELOCITY		SHEET NO.	1 OF 1