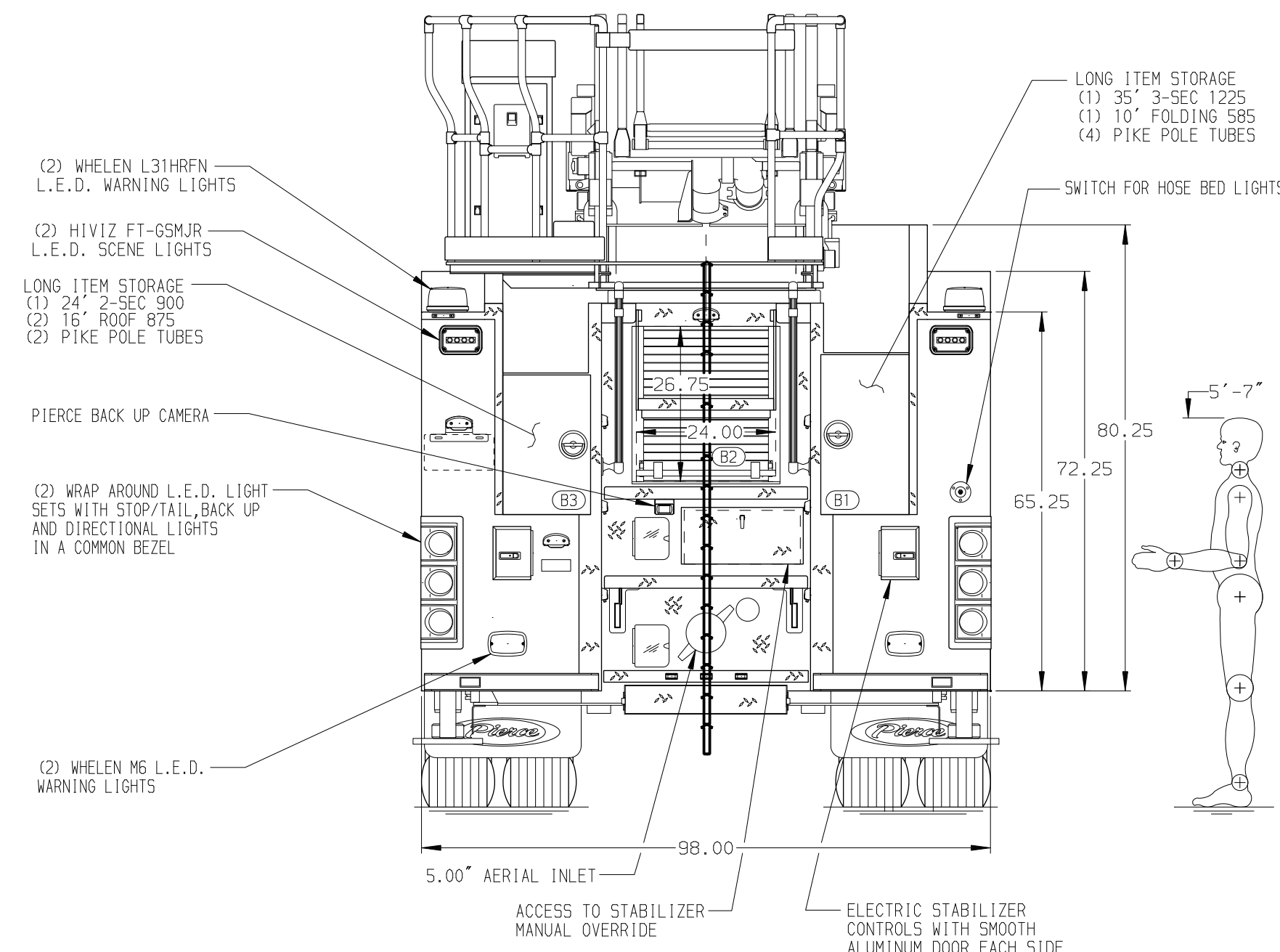
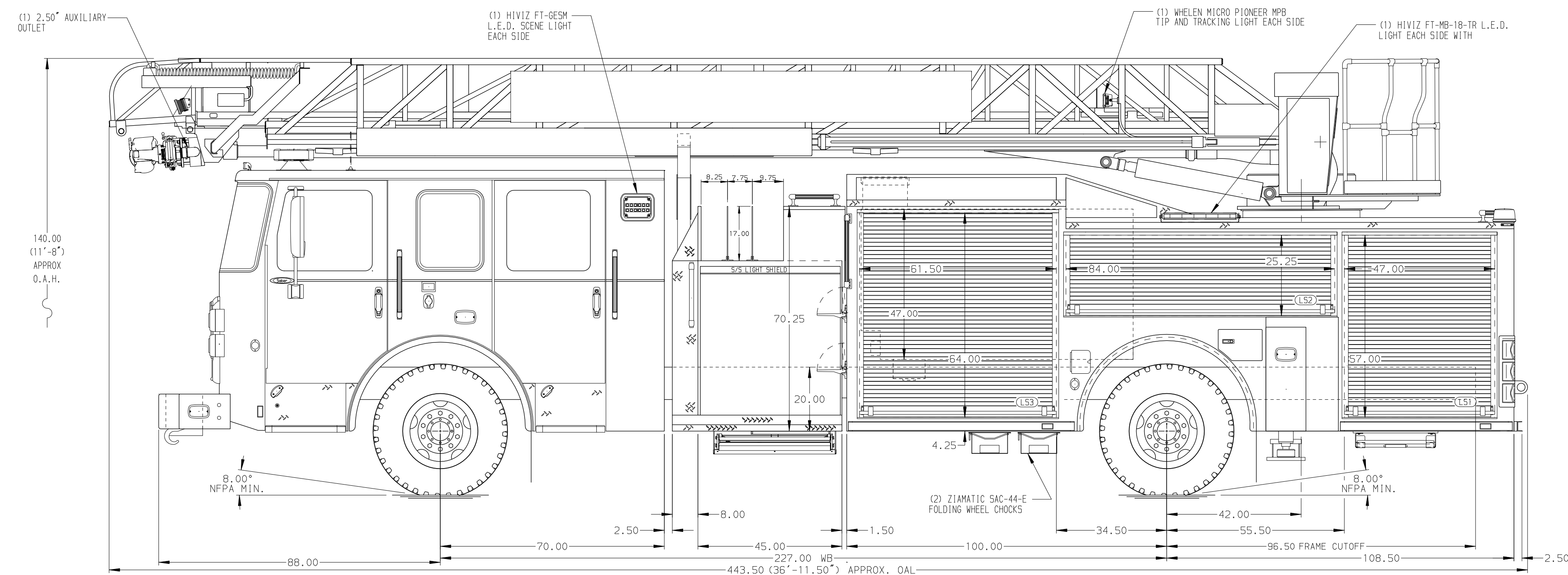


<p>BODY</p> <p>75' HAL Aluminum Body</p> <p>COMPT, LEFT SIDE FRONT Full Height RollUp Forward</p> <p>COMPT, LEFT SIDE REAR Full Height RollUp Rearward</p> <p>COMPT, RIGHT SIDE FRONT Full Height RollUp Forward</p> <p>COMPT, RIGHT SIDE REAR Full Height RollUp Rearward</p>	<p>WATER TANK</p> <p>500 Gallon Poly Water Tank</p> <p>Foam System</p> <p>Plumbing for Future Husky Foam System</p> <p>Foam Cell</p> <p>20 Gallon Foam Cell, Non-Reduced Water</p>
---	---



<p>CHASSIS</p> <p>Saber FR Chassis</p> <p>ENGINE</p> <p>450 HP Cummins L9 Engine</p>	<p>CAB</p> <p>7000 Saber Cab</p> <p>BUMPER</p> <p>19" Extended Painted Steel</p>	<p>AXLE, FRONT, CUSTOM</p> <p>20,000 Lb Hendrickson Axle</p> <p>AXLE, REAR</p> <p>33,500 Lb Meritor Axle</p>	<p>TRANSMISSION</p> <p>Allison 6th Gen, 3000 EV5 P</p>	<p>PUMPHOUSE</p> <p>45" Control Zone Side Mount</p> <p>PUMP</p> <p>2000 GPM Waterous CSU</p>	<p>CROSSLAYS, 1.50"</p> <p>(2) 1.50" Standard Capacity</p> <p>CROSSLAYS, 2.50"</p> <p>(1) 2.50" Standard Capacity</p>	<p>SPEEDLAYS</p> <p>Speedlays Not Required</p> <p>GENERATOR</p> <p>Generator Not Required</p>
--	--	--	---	--	---	---

NOTE

DIMENSIONS SHOWN ARE APPROXIMATE AND ARE SUBJECT TO MINOR DEVIATIONS AS MAY OCCUR OR BE NECESSARY IN CONSTRUCTION. MINOR DETAILS NOT SHOWN.

- RUNG LIGHTING ON AERIAL LADDER
- SHORELINE RECEPTACLE WITH KUSSMALL SUPER AUTO-EJECT LOCATED ON DRIVER SIDE OF THE CAB
- AIR INLET WITH DISCONNECT COUPLING IN THE DRIVER SIDE STEPWELL
- BATTERY CHARGER LOCATED BEHIND DRIVER SEAT
- BATTERY CHARGE INDICATOR LOCATED ON DRIVER SIDE OF THE CAB
- DUAL L.E.D. LIGHT STRIPS LOCATED IN HOSE BED
- SIX ADJUSTABLE SHELVES IN COMPARTMENTS PER SHOP ORDER
- FOUR FLOOR MOUNTED SLIDE-OUT TRAYS LOCATED IN COMPARTMENTS PER SHOP ORDER
- 7.00" AERIAL LIMITED RETRACTION
10. 1.50" RAISED AERIAL PEDESTAL
- 2000 GPM HIGH FLOW WATERWAY
- LIFTING EYE RESCUE ATTACHMENT AT AERIAL TIP

		JOB NO.	39447
<p>Pierce MANUFACTURING INC.</p>		SCALE	1:24
<p>TITLE</p> <p>75 AERIAL LADDER & BODY ASSEMBLY (HAL)</p>		DATE	03JAN23
<p>MAKE</p> <p>PIERCE</p>		DRAWN BY <p>ANZ</p>	CHECKED BY <p>CWI</p>
<p>FOR</p> <p>PIERCE FIELD UNIT APPLETON, WI</p>		SHEET SIZE <p>D</p>	SHEET NO. <p>1 OF 1</p>
<p>MODEL</p> <p>SABER FR</p>		<p>DWG NO.</p> <p>39447AD</p>	

REV	DATE	BY	CH
-	-	-	-