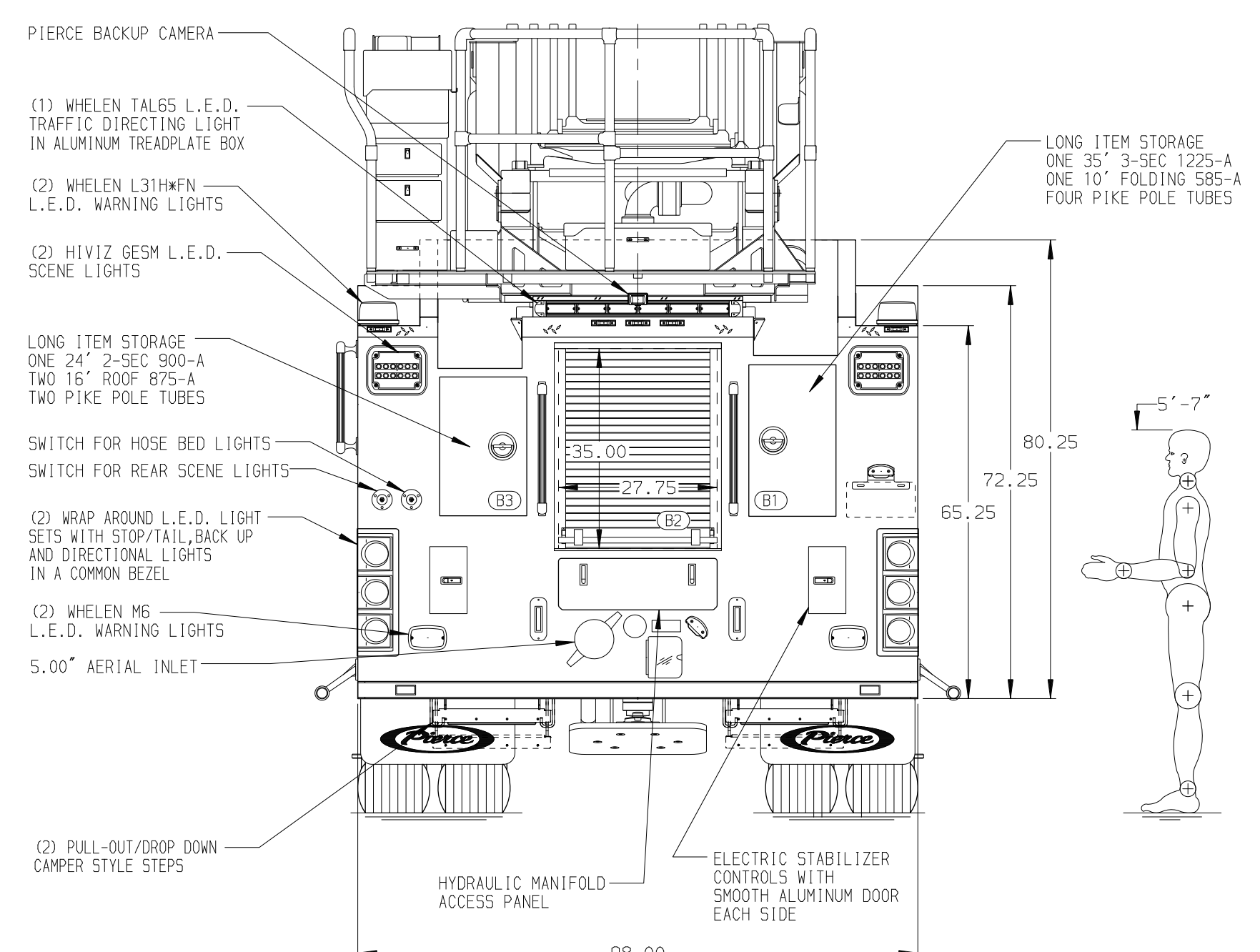
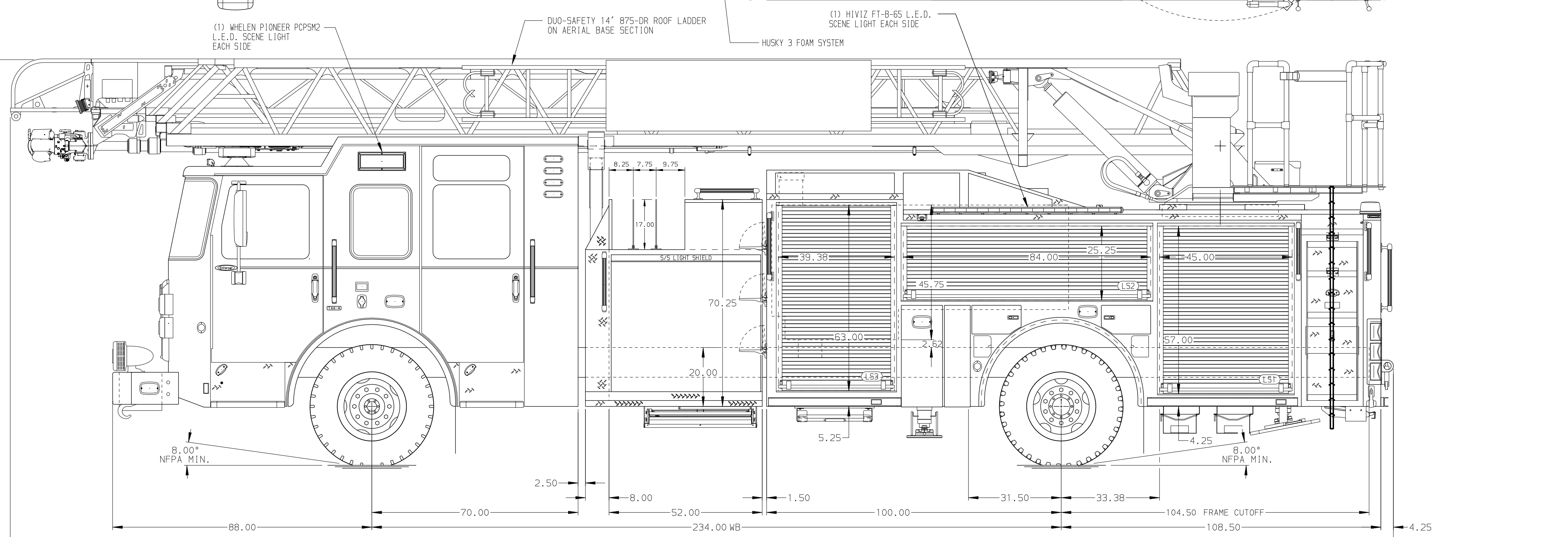


<p>BODY 107' ASL Aluminum Body</p> <p>COMPT, LEFT SIDE FRONT Full Height RollUp Forward</p> <p>COMPT, LEFT SIDE REAR Full Height RollUp Rearward</p> <p>COMPT, RIGHT SIDE FRONT Full Height RollUp Forward</p> <p>COMPT, RIGHT SIDE REAR Full Height RollUp Rearward</p>	<p>WATER TANK 500 Gallon Poly Water Tank</p> <p>Foam System Husky 3 Single Agent Foam System</p> <p>Foam Cell 20 Gallon Foam Cell, Non Reduced Water</p>
---	---



<p>CHASSIS Enforcer Chassis 525 HP Cummins X12 Engine</p>	<p>CAB 7010 Enforcer Notched Cab 19" Extended Stainless Steel</p>	<p>AXLE, FRONT, CUSTOM 22,800 Lb TAK-4 Axle</p> <p>AXLE, REAR 33,500 Lb Meritor Axle</p>	<p>TRANSMISSION Allison 6th Gen, 4500 EV5 P</p>	<p>PUMPHOUSE 52" Control Zone Side Mount 2000 GPM Waterous CSU</p>	<p>CROSSLAYS, 1.50" (2) 1.50" Standard Capacity</p> <p>CROSSLAYS, 2.50" (1) 2.50" Standard Capacity</p>	<p>SPEEDLAYS Speedlays Not Required</p> <p>GENERATOR Generator Not Required</p>	<p>SAFETY Side Roll and Frontal Impact Protection</p>	<p>PIERCE MANUFACTURING INC.</p>	<p>JOB NO. 39449</p> <p>SCALE 1:24</p> <p>DATE 09JAN23</p>
<p>NOTE DIMENSIONS SHOWN ARE APPROXIMATE AND ARE SUBJECT TO MINOR DEVIATIONS AS MAY OCCUR OR BE NECESSARY IN CONSTRUCTION. MINOR DETAILS NOT SHOWN.</p>									
<p>1. ONE 1.50" OUTLET WITH 2.00" PIPING AND SWIVEL LOCATED IN CENTER BUMPER TRAY 2. SHOVELING RECEPTACLE WITH KUSSMAUL SUPER AUTO-EJECT LOCATED ON DRIVER SIDE OF THE CAB 3. AIR INLET WITH DISCONNECT COUPLING IN THE DRIVER SIDE STEWELL 4. BATTERY CHARGER LOCATED BEHIND DRIVER SEAT 5. BATTERY CHARGE INDICATOR LOCATED ON DRIVERS SIDE CAB 6. DUAL L.E.D. LIGHT STRIPS LOCATED IN HOSE BED 7. SIX ADJUSTABLE SHELVES LOCATED IN COMPARTMENTS PER ORDER 8. THREE FLOOR MOUNTED SLIDE-OUT TRAYS LOCATED IN COMPARTMENTS PER ORDER 9. ONE CTECH CABINET LOCATED IN COMPARTMENT PER ORDER 10. ONE RECEPTACLE LOCATED IN EMS CABINET PER ORDER 11. 1500 GPM HIGH FLOW WATERWAY 12. LIMITED RETRACTION NOT REQUIRED 13. MOUNTING PROVISIONS FOR FRONT INLET 14. NON RAISED AERIAL PEDESTAL</p>									
REV	DATE	BY	CH	ENFORCER	CHASSIS DATA	TITLE	107' ASCENDANT AERIAL LADDER AND BODY ASSEMBLY	DRAWN BY	ANZ
					MAKE	FOR	520 GALLON TANK, 500 WATER/20 FOAM	CHECKED BY	THS
					MODEL	DWG NO.	CITY OF PARAGOULD	11JAN23	
							PARAGOULD, AR	SHEET SIZE	D
								SHEET NO.	1 OF 1