

PUMPER BODY

Long Aluminum 2nd Gen Pumper

CHASSIS

Enforcer Chassis

CHASSIS AXLE, FRONT, CUSTOM

19,500 Lb TAK-4 Axle

AXLE, REAR

27,000 Lb Meritor Axle

ENGINE

450 HP Cummins L9 Engine

TRANSMISSION

Allison 6th Gen, 3000 EVS P

BUMPER

22" Extended Painted Steel

CAB

7010 Enforcer Cab

BODY

WATER TANK

1000 Gallon Poly Water Tank

COMPT, PUMPER, REAR

51.25" FF RollUp Rear Compt

COMPT, PUMPER, LEFT SIDE

161" RollUp Full Height Front & Rear FDLR

COMPT, PUMPER, RIGHT SIDE

161" RollUp Full Height Front & Rear FDLR

FIRE SUPPRESSION PUMPHOUSE

48" Control Zone Side Mount

PUMP

1500 GPM Waterous CSU

CROSSLAYS, 1.50"

1.50" Crosslays Not Required

CROSSLAYS, 2.50"

2.50" Crosslay Not Required

SPEEDLAYS

(2) 1.50" W/Troy Std. Capacity

GENERATOR

Generator Not Required

Foam System

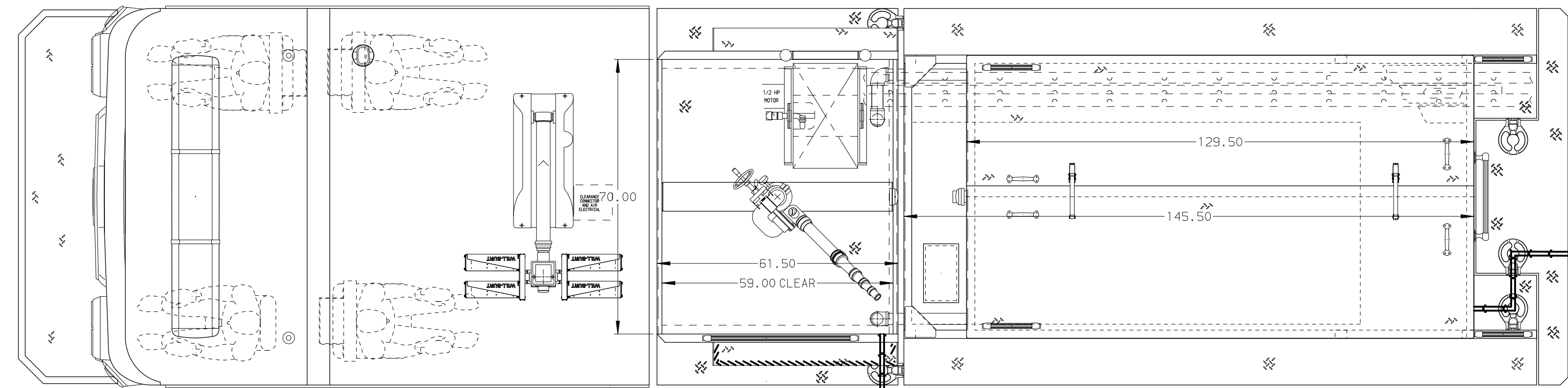
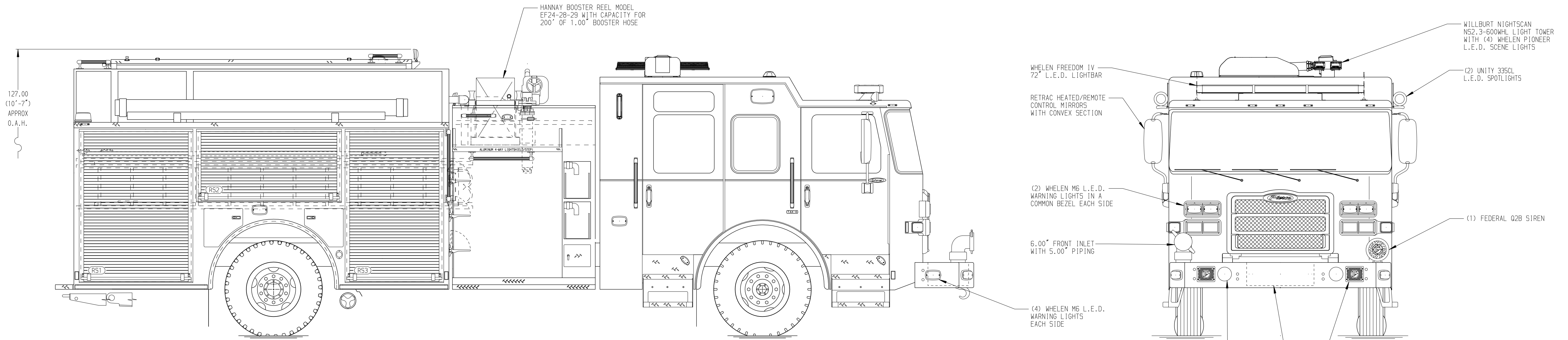
Foam System Not Required

Foam Cell

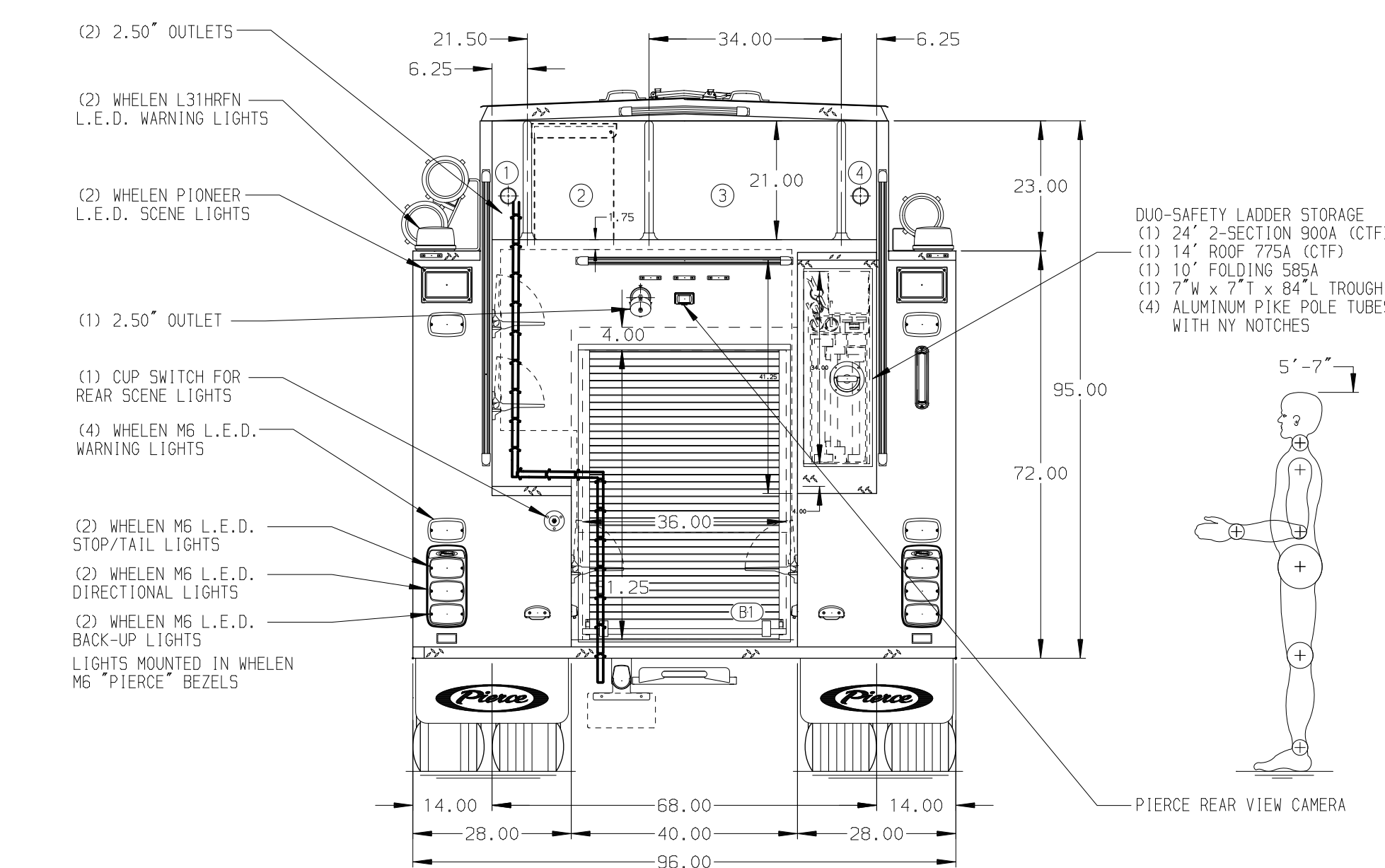
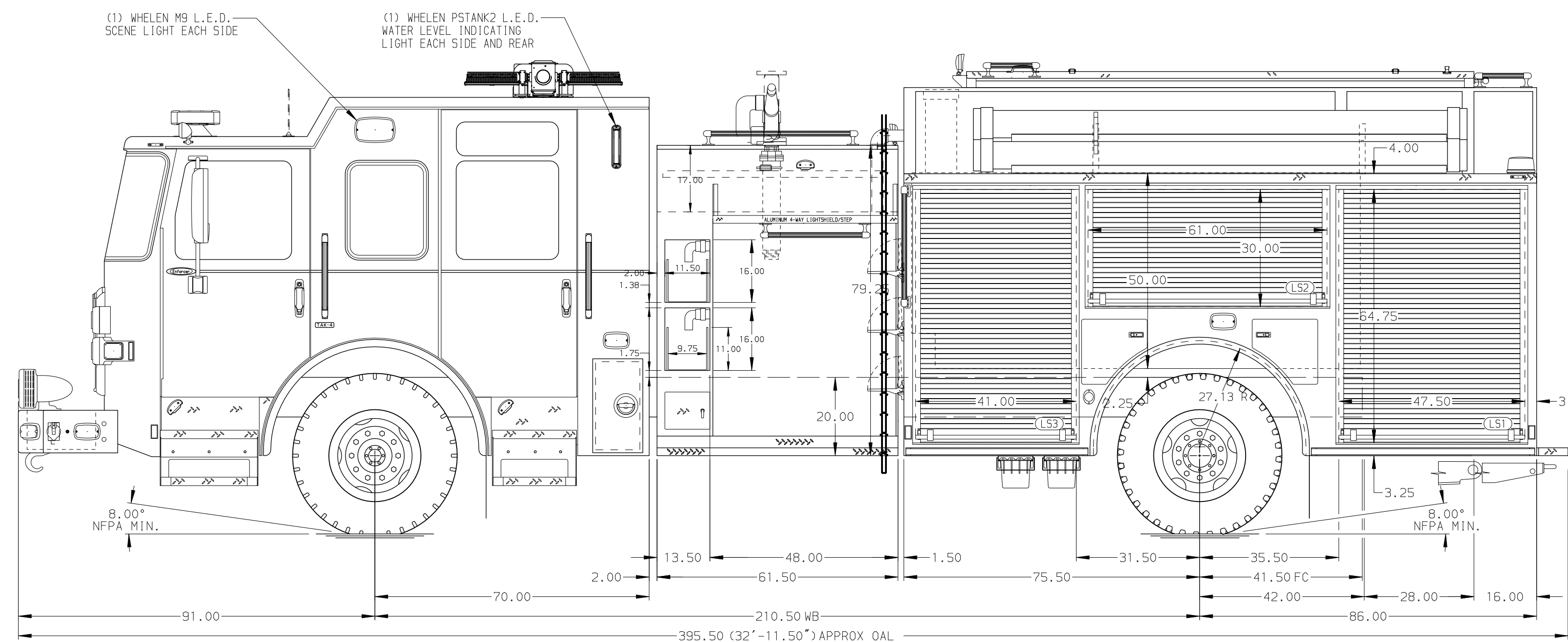
Foam Cell Not Required

NOTE
DIMENSIONS SHOWN ARE APPROXIMATE AND ARE SUBJECT TO MINOR DEVIATIONS AS MAY OCCUR OR BE NECESSARY IN CONSTRUCTION. MINOR DETAILS NOT SHOWN.

1. SHORELINE RECEPTACLE LOCATED ON DRIVER SIDE OF BUMPER EXTENSION
2. AIR INLET WITH DISCONNECT COUPLING IN THE DRIVER SIDE OF BUMPER EXTENSION
3. BATTERY CHARGER LOCATED PER ORDER
4. BATTERY CHARGE INDICATOR LOCATED ON THE DRIVER SIDE SEAT RISER
5. EIGHT ADJUSTABLE SHELVES LOCATED PER ORDER
6. ONE FLOOR MOUNTED SLIDE-OUT TRAY LOCATED PER ORDER
7. ONE ADJUSTABLE SLIDE-OUT TRAY LOCATED PER ORDER
8. TWO VERTICAL PARTITIONS LOCATED PER ORDER
9. ALUMINUM TREADPLATE ON COMPARTMENT FLOOR PER ORDER
10. WOOD GRATING LOCATED PER ORDER



HOSEBED CAPACITY	
BED 1	200' OF 2.50" D.J. POLY HOSE
BED 2	1000' OF 2.50" D.J. POLY HOSE 100' OF 1.75" D.J. POLY HOSE
BED 3	1000' OF 5.00" D.J. POLY HOSE
BED 4	200' OF 2.50" D.J. POLY HOSE



		JOB NO.	39482
		SCALE	DATE
TITLE Pierce Pumper Approval Drawing		DRAWN BY	1AUG23
		WRE	
FOR Lake Villa Fire Protection District		CHECKED BY	04AUG23
		MMF	
DWG NO. 39482AD		SHEET SIZE	SHEET NO.
		D	1 OF 1

REV	DATE	BY	CH	ENFORCER
14MAY24	AMI	CLM	MAKE	
12FEB24	AMI	CLM	PIERCE	
30NOV23	MMF	CLM	MODEL	