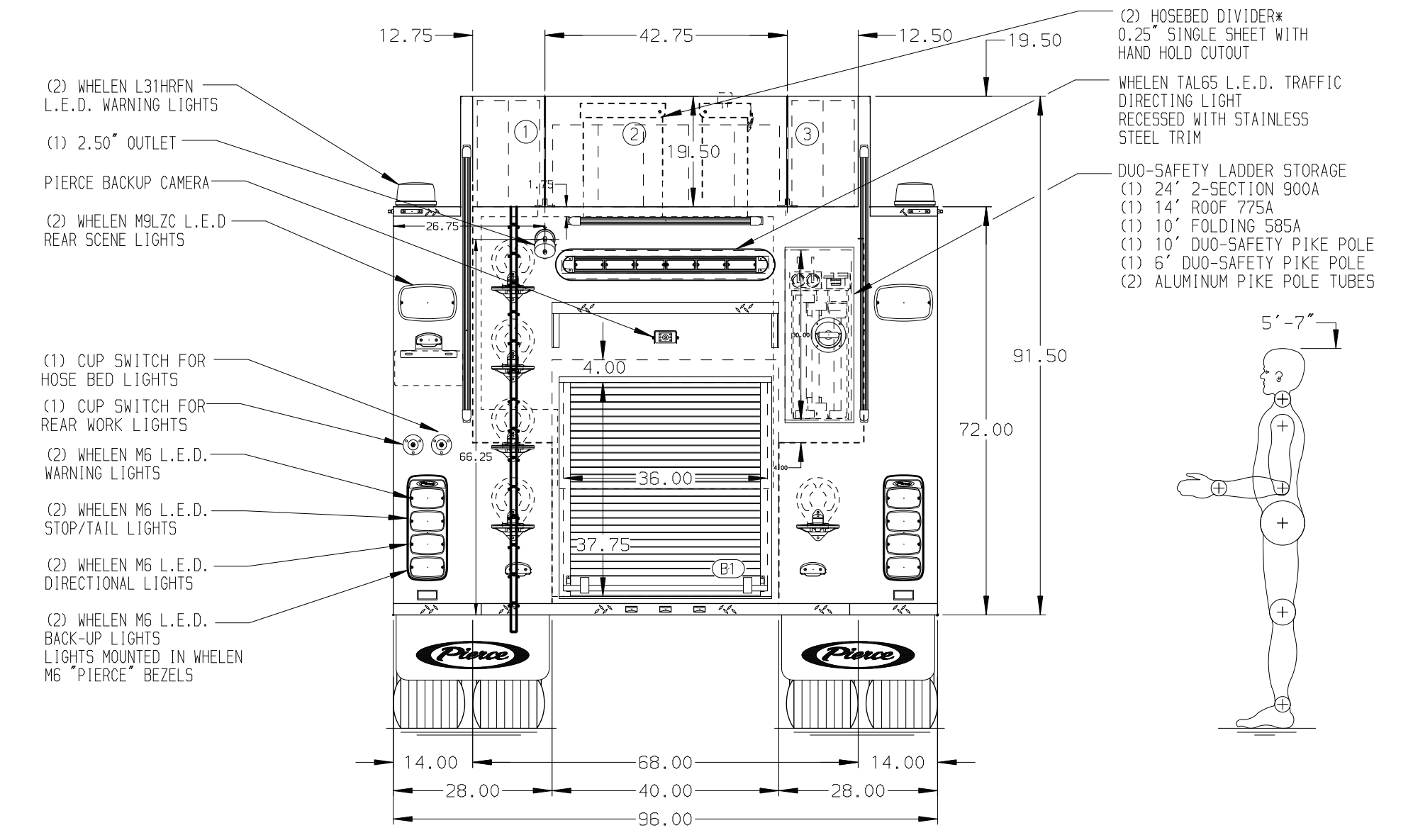
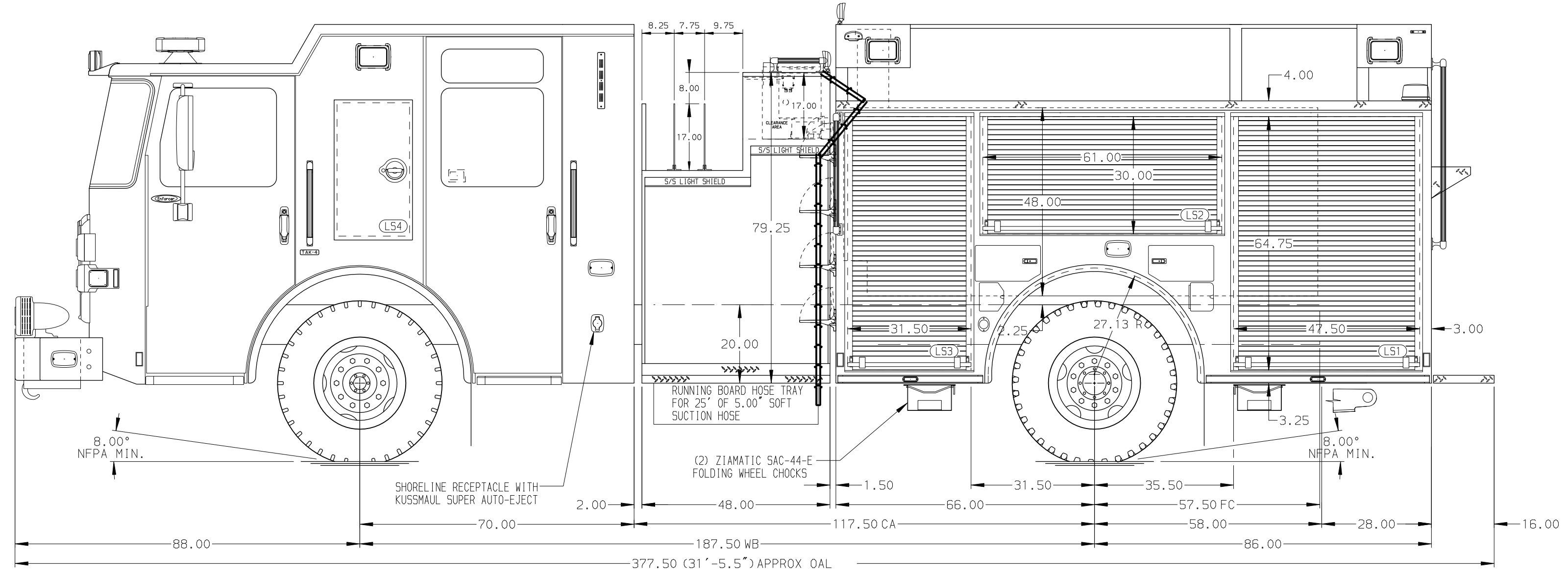


- HOSEBED CAPACITIES
- ① 500' OF 3.00" D.J. HOSE
  - ② 1000' OF 5.00" D.J. HOSE
  - ③ 500' OF 3.00" D.J. HOSE



ALUMINUM BODY

SIDE ROLL AND FRONTAL IMPACT PROTECTION

NOTE  
DIMENSIONS SHOWN ARE APPROXIMATE AND ARE SUBJECT TO MINOR DEVIATIONS AS MAY OCCUR OR BE NECESSARY IN CONSTRUCTION. MINOR DETAILS NOT SHOWN.

- 1. BATTERY CHARGER MOUNTED BEHIND DRIVER'S SEAT
- 2. BATTERY CHARGER INDICATOR BEHIND DRIVER'S SEAT DISPLAYED THROUGH WINDOW
- 3. DUAL L.E.D. LIGHT STRIPS LOCATED IN HOSE BED
- 4. SEVEN DRIP PAN GUARDS FOR ROLL-UP DOORS LOCATED PER ORDER
- 5. SIX FULL WIDTH/DEPTH ADJUSTABLE SHELVES LOCATED PER ORDER
- 6. AIR INLET WITH DISCONNECT COUPLING LOCATED IN D5 STEP WELL

CUSTOMER APPROVAL			
APPROVED BY:			
DATE:			
CHASSIS DATA	TITLE	1500-D-1000P, 980 GAL WATER W/20 GAL FOAM, 152" BODY	
MAKE	FOR	PIERCE FIELD UNIT	
PIERCE		APPLETON, WISCONSIN	
MODEL	DWG NO.	39491AD	
ENFORCER	REV	DATE	BY

**Pierce** MANUFACTURING INC.

JOB NO. 39491

SCALE 1:24 DATE

DRAWN BY MMF 28NOV22

CHECKED BY THS 30NOV22

SHEET SIZE D SHEET NO. 1 OF 1