

**PUMPER BODY**  
Pumper, PUC, Aluminum

**CHASSIS**  
Enforcer Chassis

**CHASSIS AXLE, FRONT, CUSTOM**  
18,000 Lb TAK-4 Axle

**AXLE, REAR**  
27,000 Lb Meritor Axle

**ENGINE**  
450 HP Cummins L9 Engine

**TRANSMISSION**  
Allison 6th Gen, 3000 EVS P

**BUMPER**  
13" Extended Painted Steel

**CAB**  
7010 Enforcer Cab, PUC

**BODY WATER TANK**  
750 Gallon New York Style Water Tank

**COMPT, PUMPER, REAR**  
29.50" FF RollUp Rear Compt w/Tailboard, PUC

**COMPT, PUMPER, LEFT SIDE**  
177" RollUp Full Height & Depth Front & Rear, PUC

**COMPT, PUMPER, RIGHT SIDE**  
177" RollUp Full Height & Depth Front & Rear, PUC

**FIRE SUPPRESSION PUMPHOUSE**  
Control Zone, PUC

**PUMP**  
1500 GPM Pierce PUC

**CROSSLAYS, 1.50"**  
(2) 1.50" Standard Capacity

**CROSSLAYS, 2.50"**  
Crosslays Not Required

**SPEEDLAYS**  
Speedlays Not Required

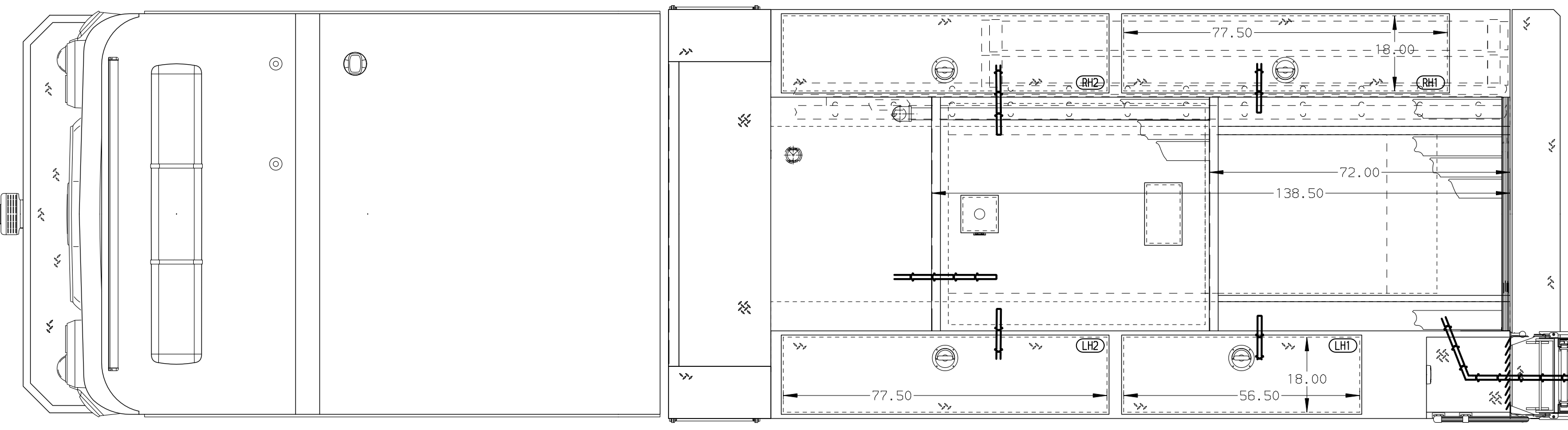
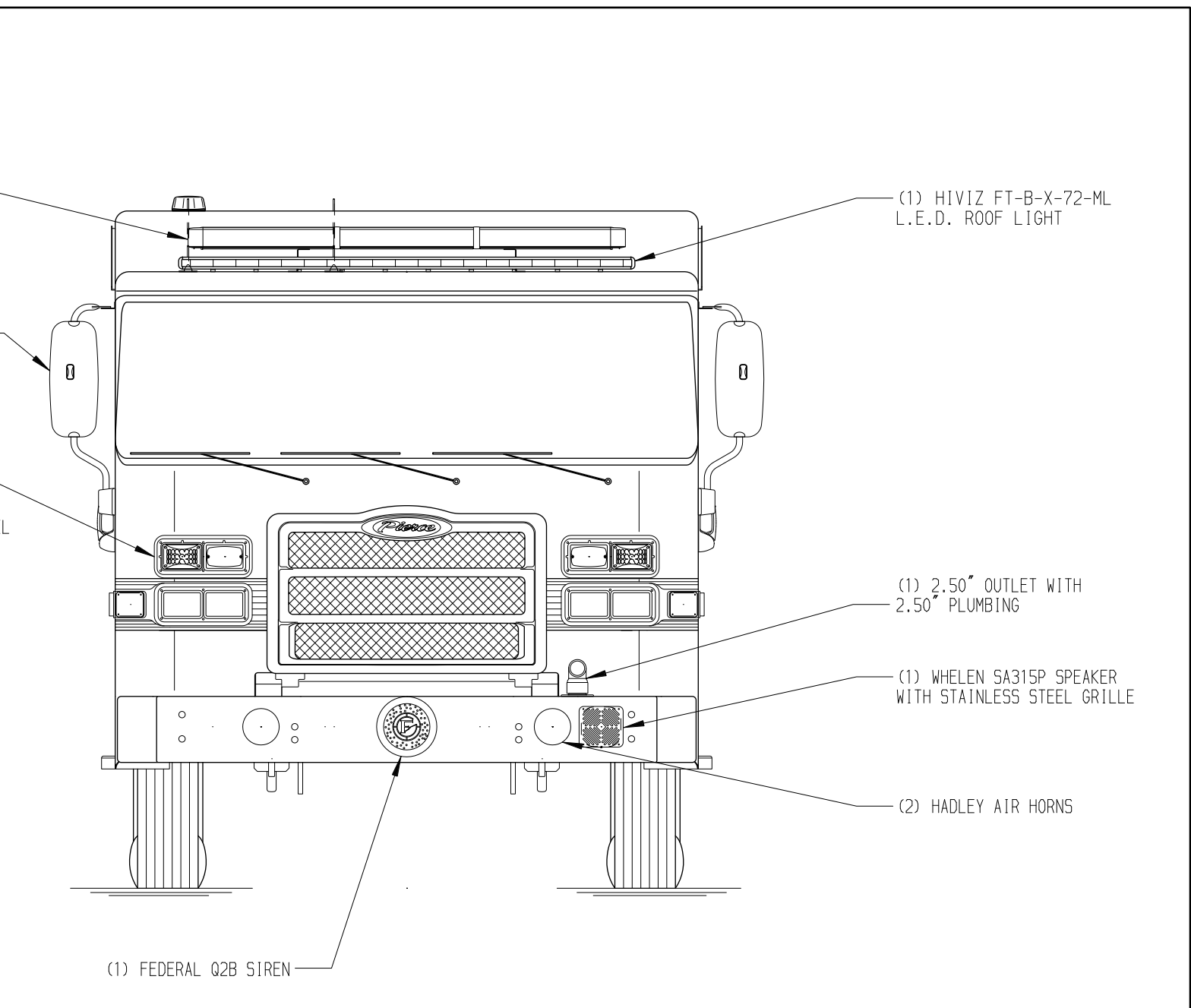
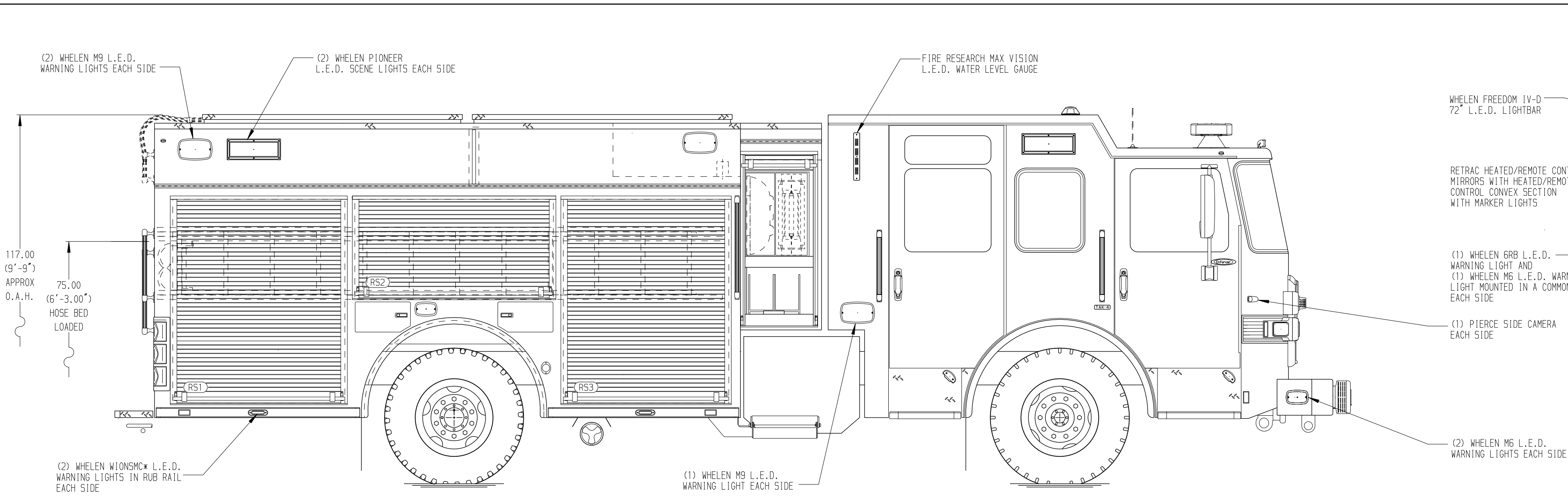
**GENERATOR**  
Generator Not Required

**Foam System**  
External Foam System

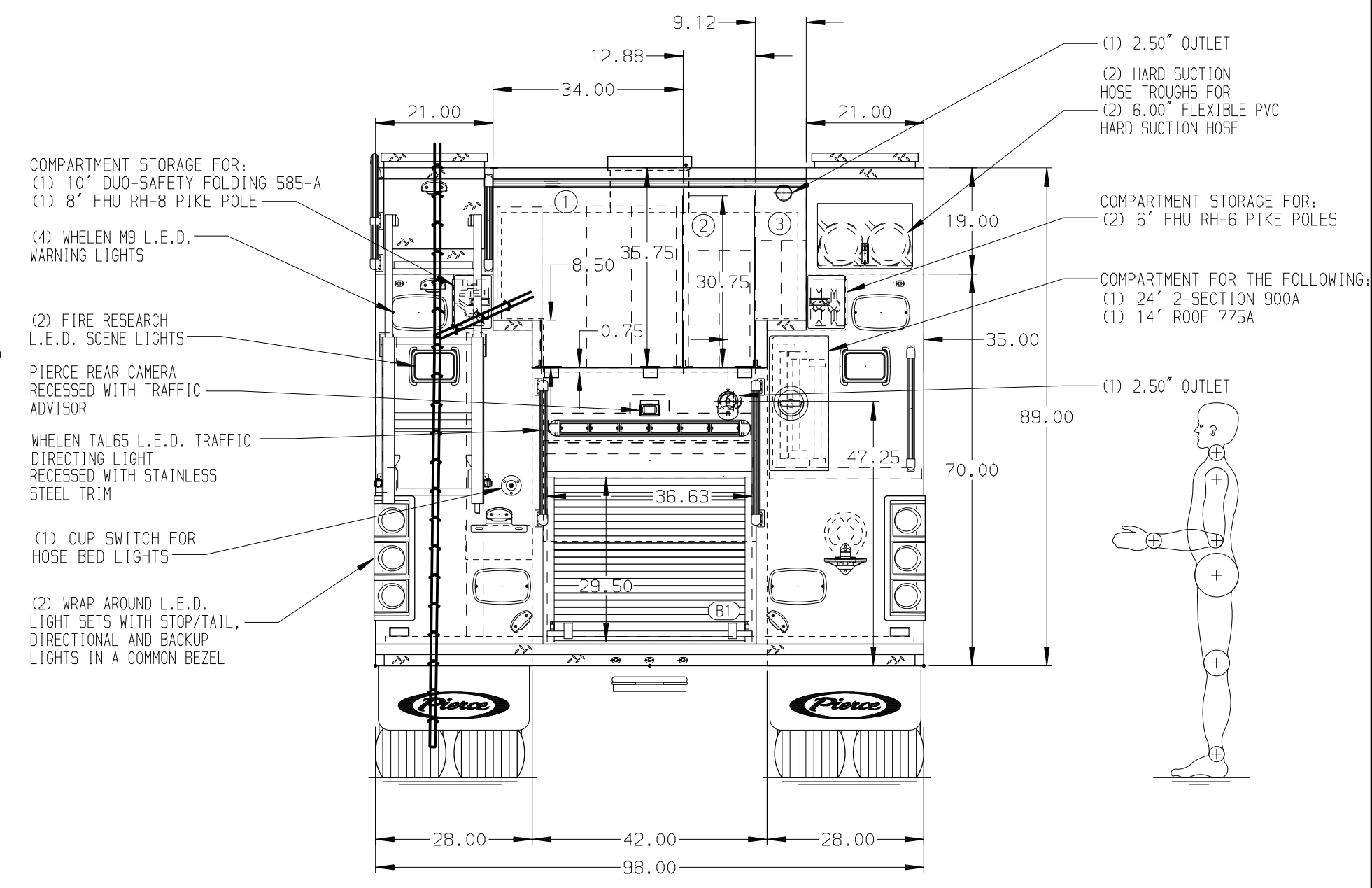
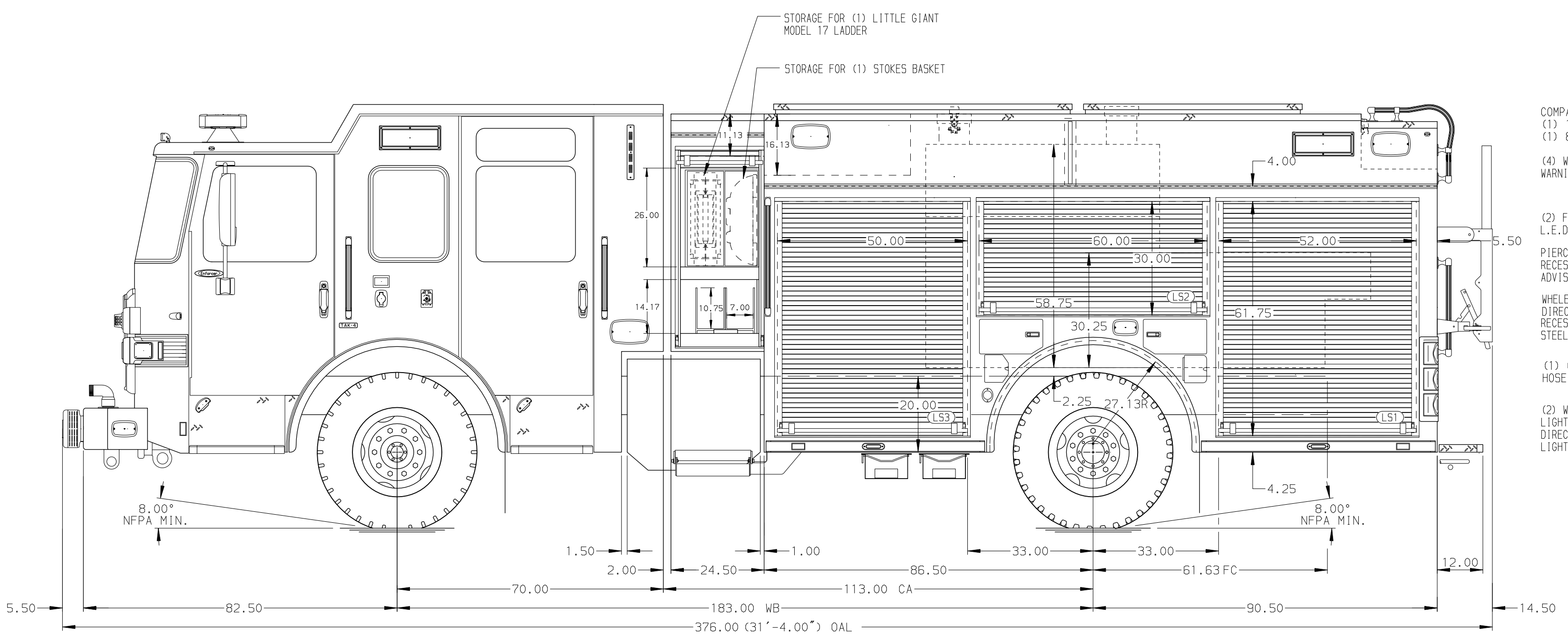
**Foam Cell**  
30 Gallon Foam Cell, Not Reduced Water, PUC

Side Roll and Frontal Impact Protection

**NOTE**  
DIMENSIONS SHOWN ARE APPROXIMATE AND ARE SUBJECT TO MINOR DEVIATIONS AS MAY OCCUR OR BE NECESSARY IN CONSTRUCTION. MINOR DETAILS NOT SHOWN.



HOSEBED CAPACITY	
BED 1	800' OF 5.00" D.J. POLY HOSE
BED 2	300' OF 3.00" D.J. POLY HOSE
BED 3	200' OF 2.50" D.J. POLY HOSE



MAXIMUM O.A.H. 117.00"

- SHORELINE RECEPTACLE WITH KUSSMAIL SUPER AUTO-EJECT LOCATED ON DRIVER SIDE OF THE CAB
- BATTERY CHARGER LOCATED PER ORDER
- EIGHT ADJUSTABLE SHELVES LOCATED PER ORDER
- TWO FLOOR MOUNTED SLIDE-OUT TRAY LOCATED PER ORDER
- AUTOMATIC TIRE CHAINS LOCATED PER ORDER
- ONE SLIDE-OUT TRAY LOCATED PER ORDER
- ONE TILT/SLIDE-OUT TRAY LOCATED PER ORDER
- ONE VERTICAL PARTITION LOCATED PER ORDER

REV	DATE	BY	CH	ENFORCER
19MAR24	BTH	CSH		CHASSIS DATA
15JAN24	BTH	CSH		PIERCE
02NOV23	BTH	CSH		MODEL

<b>Pierce MANUFACTURING INC.</b>		JOB NO.	39512-01-02
		SCALE	1:24
		DATE	
TITLE		Pierce Pumper Approval Drawing	
FOR		Ridgefield Fire Department	
DRAWN BY		BTH	06SEP23
CHECKED BY		AMI	19SEP23
DWG NO.		39512AD	
SHEET SIZE		D	SHEET NO. 1 OF 1