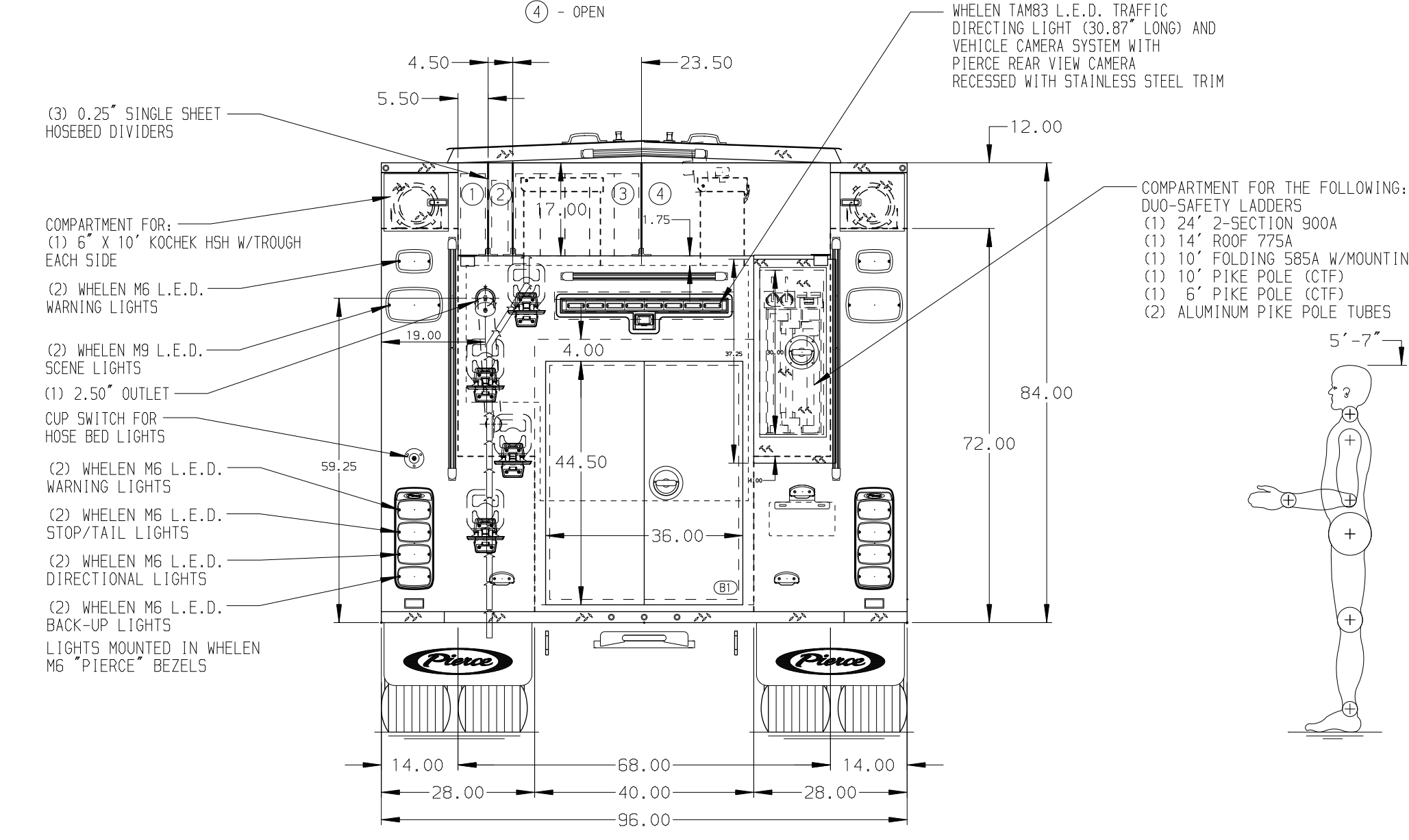
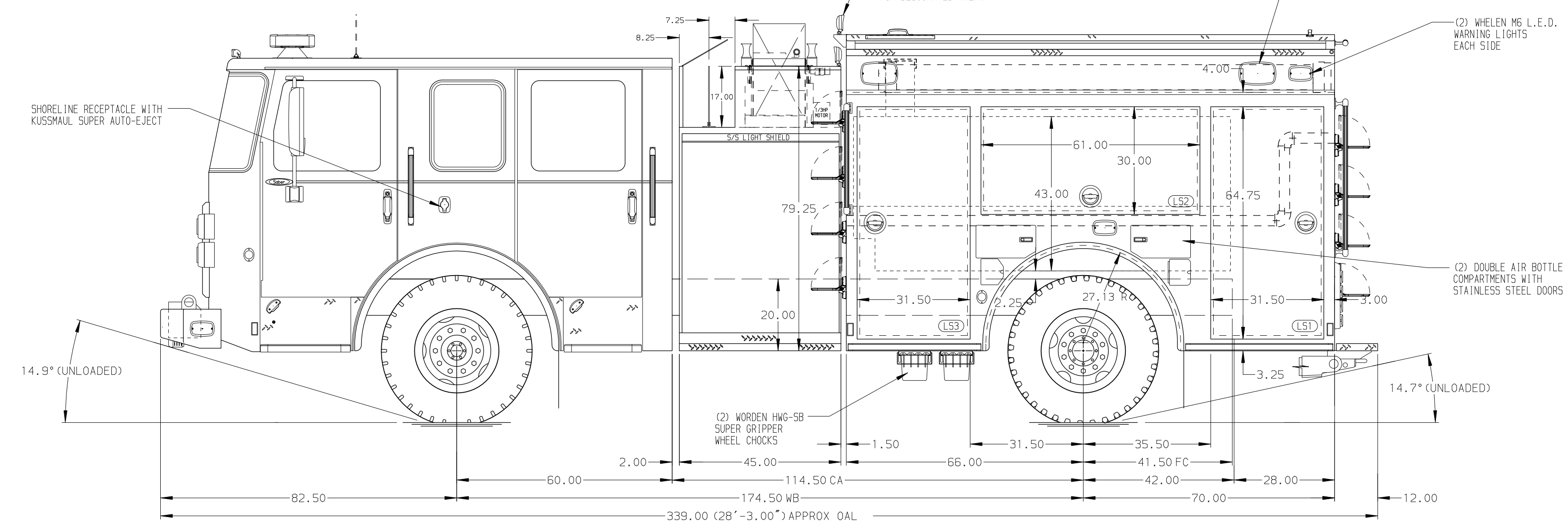


- HOSEBED CAPACITIES**
- ① - 200' OF 2.50" DJP HOSE
 - ② - 200' OF 1.50" SJP HOSE
 - ③ - 800' OF 2.50" DJP HOSE
 - ④ - OPEN



ALUMINUM BODY

NOTE
DIMENSIONS SHOWN ARE APPROXIMATE AND ARE SUBJECT TO MINOR DEVIATIONS AS MAY OCCUR OR BE NECESSARY IN CONSTRUCTION. MINOR DETAILS NOT SHOWN.

1. AIR INLET/OUTLET WITH DISCONNECT FITTING IN A RECESSED ALUMINUM TREADPLATE BOX LOCATED AT THE DRIVER'S SIDE PUMP PANEL
2. BATTERY CHARGER LOCATED IN COMPARTMENT PER ORDER
3. BATTERY CHARGER INDICATOR LOCATED ON DRIVER'S SEAT RISER
4. DUAL L.E.D. LIGHT STRIPS LOCATED IN HOSE BED
5. REVERSED HINGED DOOR ON COMPARTMENT L53
6. SEVEN DUAL L.E.D. LIGHT STRIPS ON EACH SIDE OF COMPARTMENT DOOR PER ORDER
7. TEN FULL WIDTH/DEPTH ADJUSTABLE SHELVES LOCATED IN COMPARTMENTS PER ORDER
8. ONE FLOOR MOUNTED SLIDE-OUT TRAY LOCATED IN COMPARTMENT PER ORDER
9. TWO ZICO AIR BOTTLE HOLDERS WITH STRAP MOUNTED ON ADJUSTABLE TRACKS LOCATED IN COMPARTMENT PER ORDER
10. DARLEY 1.5GHP HYDRAULIC PTO DRIVE 150GPM AUXILIARY PUMP LOCATED IN PUMP HOUSE

		JOB NO.	39552
		SCALE	DATE
CHASSIS DATA TITLE: 1250-D-770P, 750G WATER W/20G FOAM, 136" BODY (2) CROSSLAYS, LADDERS BETWEEN TANK & SIDE SHEETS MAKE: PIERCE FOR: JANESVILLE FIRE PROTECTION DISTRICT JANESVILLE, CALIFORNIA		DRAWN BY	01MAY23
		CHECKED BY	-
DWG NO. 39552AD		SHEET SIZE	SHEET NO.
		D	1 OF 1

REV	DATE	BY	CH	SABER FR
030CT23	RWR	JAP		
25JUL23	WHO	JAP		