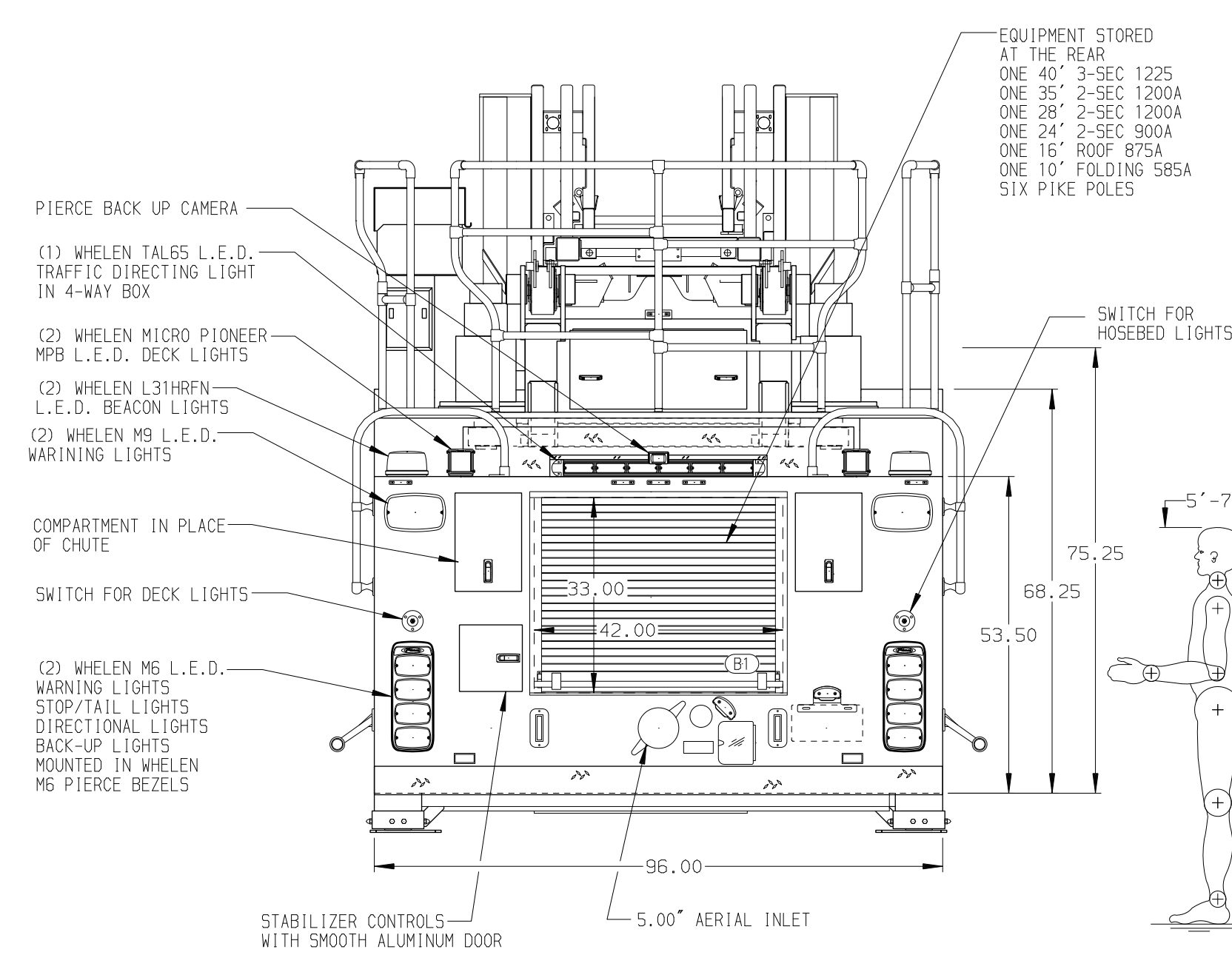
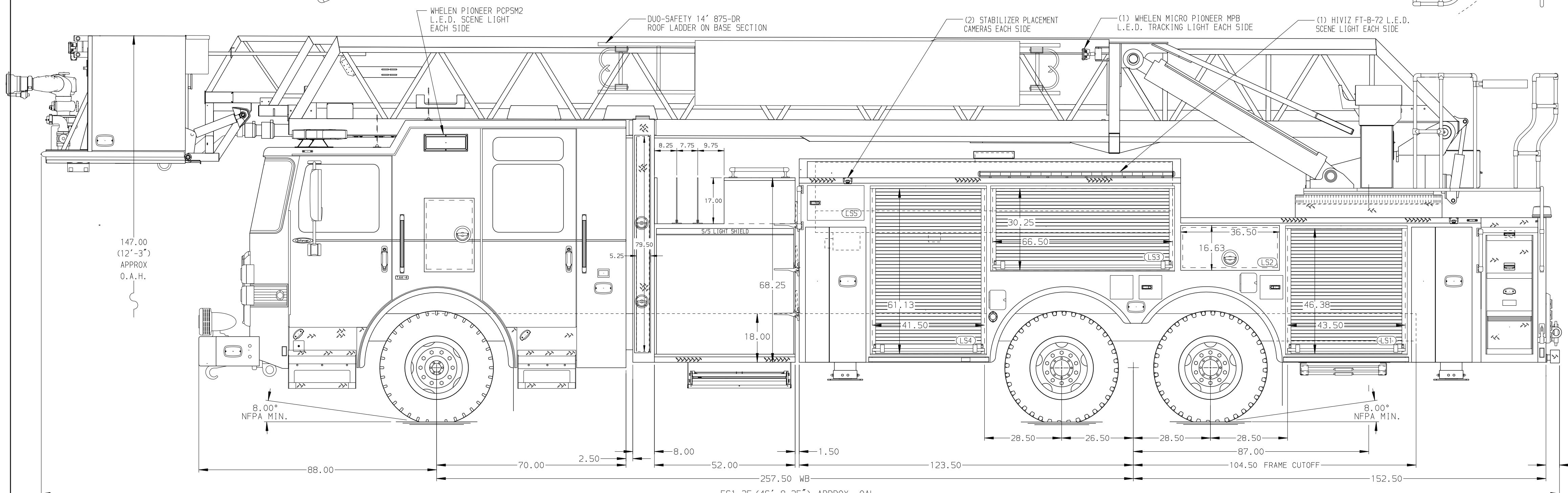


<p>BODY</p> <p>100' Steel Platform Alum Body</p> <p>COMPT, LEFT SIDE FRONT FH/FD RollUp w/o Chute</p> <p>COMPT, LEFT SIDE REAR FH/FD RollUp and Lift-up Rearward</p> <p>COMPT, RIGHT SIDE FRONT FH/FD RollUp With Chute</p> <p>COMPT, RIGHT SIDE REAR FH RollUp and Liftup Rearward</p>	<p>WATER TANK</p> <p>300 Gallon PAP Notched Poly Water Tank</p> <p>Foam System</p> <p>Foam System Not Required</p> <p>Foam Cell</p> <p>Foam Cell Not Required</p>
--	--



<p>CHASSIS</p> <p>Enforcer Chassis</p> <p>ENGINE</p> <p>525 HP CUMMINS X12 Engine</p>	<p>CAB</p> <p>7010 Notched Enforcer Cab</p> <p>BUMPER</p> <p>19\"/> </p>	<p>AXLE, FRONT, CUSTOM</p> <p>24,000 Lb TAK-4 Axle</p> <p>AXLE, REAR</p> <p>58,000 Lb Meritor Axle</p>	<p>TRANSMISSION</p> <p>Allison 6th Gen, 4500 EV5 P</p>	<p>PUMPHOUSE</p> <p>52\"/> </p>	<p>CROSSLAYS, 1.50\"</p> <p>(2) 1.50\"/> </p>	<p>SPEEDLAYS</p> <p>Speedlays Not Required</p> <p>GENERATOR</p> <p>Generator Not Required</p>	<p>SAFETY</p> <p>Side Roll and Frontal Impact Protection</p>	<p>CUSTOMER APPROVAL</p> <p>APPROVED BY: _____</p> <p>DATE: _____</p>	<p>Pierce MANUFACTURING INC.</p>	<p>JOB NO. 39612</p> <p>SCALE 1:24</p> <p>DATE 30NOV22</p>	
<p>NOTE</p> <p>DIMENSIONS SHOWN ARE APPROXIMATE AND ARE SUBJECT TO MINOR DEVIATIONS AS MAY OCCUR OR BE NECESSARY IN CONSTRUCTION. MINOR DETAILS NOT SHOWN.</p>	<p>2. AIR INLET/OUTLET WITH DISCONNECT COUPLING RECESSED IN THE DRIVER SIDE STEPWELL</p> <p>3. SHORELINE RECEPTACLE WITH KUSSMALL SUPER AUTO-EJECT LOCATED ON DRIVER SIDE SEAT RISER</p> <p>4. ALUMINUM PEGBOARD ON BACK WALL OF COMPARTMENT PER ORDER</p> <p>5. BATTERY CHARGER LOCATED PER ORDER</p> <p>6. BATTERY CHARGE INDICATOR LOCATED ON THE DRIVER SIDE OF THE CAB</p> <p>7. FIVE ADJUSTABLE SHELVES IN COMPARTMENTS PER ORDER</p> <p>8. THREE ADJUSTABLE TILTING SLIDE-OUT TRAYS IN COMPARTMENT PER ORDER</p> <p>9. FOUR FLOOR MOUNTED SLIDE-OUT TRAYS IN COMPARTMENTS PER ORDER</p> <p>10. ONE ALUMINUM PEGBOARD ON BACK WALL OF COMPARTMENT PER ORDER</p>	<p>11. SEVEN 120V RECEPTACLES PER ORDER</p> <p>12. 3.00\"/> </p>	<p>13. 3-in-1 LYFCOMBO BRACKETS AT AERIAL BASKET</p> <p>14. DC POWER TO AERIAL BASKET</p> <p>15. NO LIMITED RETRACTION</p> <p>16. RING LIGHTING ON AERIAL LADDER</p> <p>17. TWO SWING-OUT TOOLBOARDS PER ORDER</p> <p>18. OPTICOM 611 794 EMITTER MOUNTED ON AERIAL BASKET PER ORDER</p>	<p>19. RING LIGHTING ON AERIAL LADDER</p> <p>20. TWO SWING-OUT TOOLBOARDS PER ORDER</p> <p>21. OPTICOM 611 794 EMITTER MOUNTED ON AERIAL BASKET PER ORDER</p>	<p>22. OPTICOM 611 794 EMITTER MOUNTED ON AERIAL BASKET PER ORDER</p>	<p>23. OPTICOM 611 794 EMITTER MOUNTED ON AERIAL BASKET PER ORDER</p>	<p>24. OPTICOM 611 794 EMITTER MOUNTED ON AERIAL BASKET PER ORDER</p>	<p>25. OPTICOM 611 794 EMITTER MOUNTED ON AERIAL BASKET PER ORDER</p>	<p>26. OPTICOM 611 794 EMITTER MOUNTED ON AERIAL BASKET PER ORDER</p>	<p>TITLE 100 AERIAL PLATFORM & BODY ASSEMBLY (PAP100A)</p> <p>FOR MARLBOROUGH FIRE DEPARTMENT MARLBOROUGH, MA</p> <p>DWG NO. 39612AD</p>	<p>CHECKED BY NDA</p> <p>SHEET SIZE D</p> <p>SHEET NO. 1 OF 1</p>