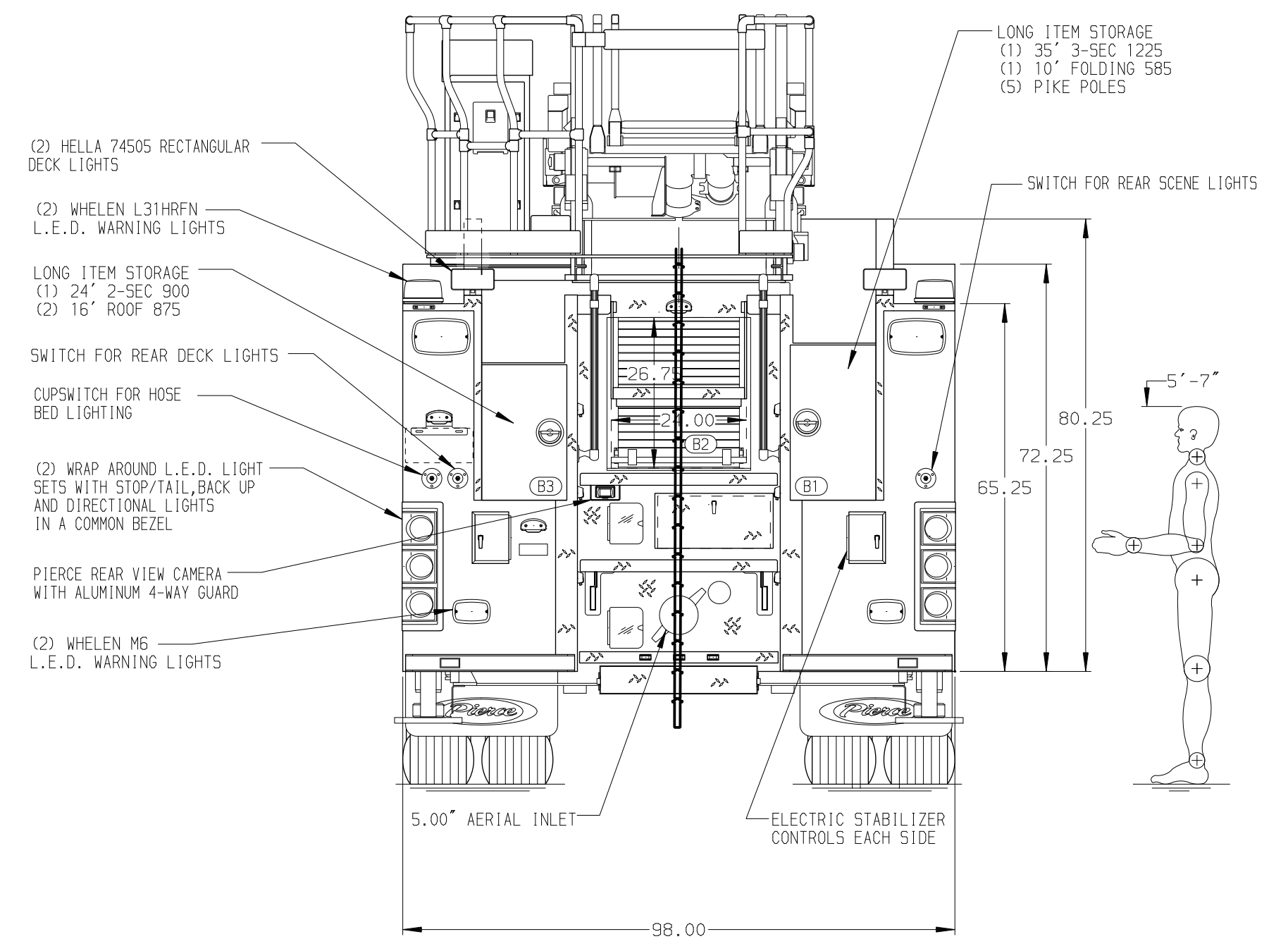
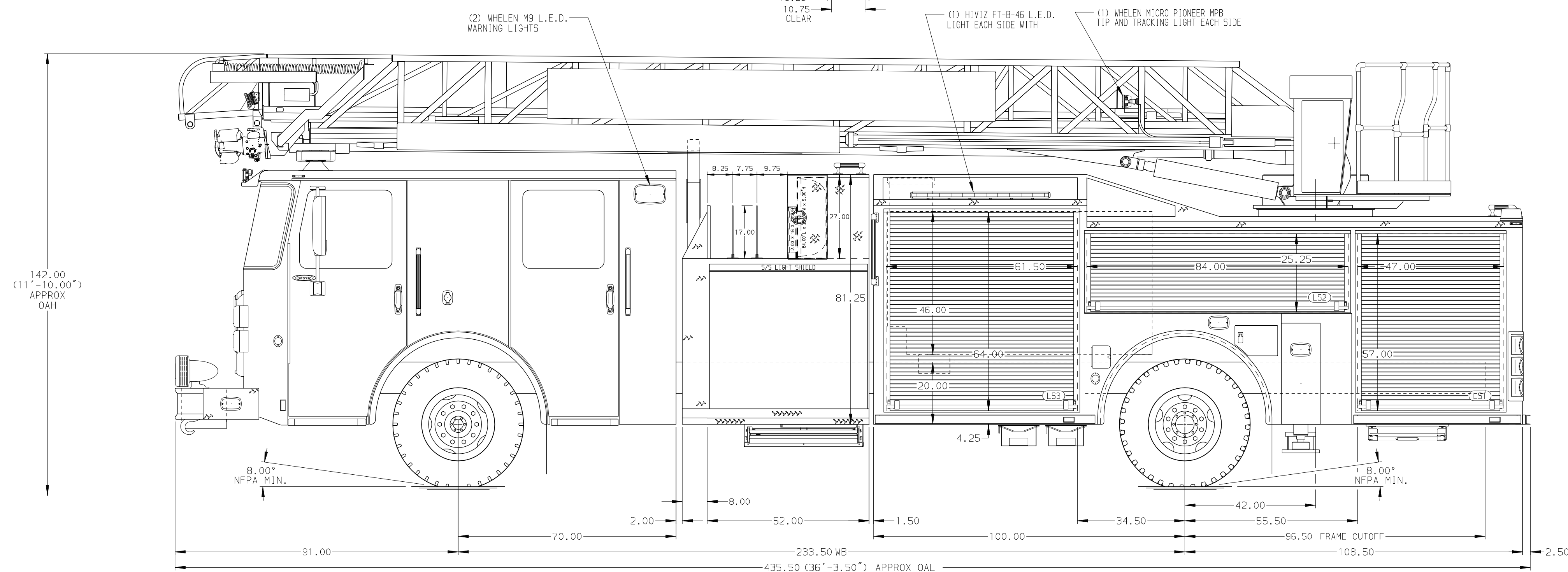


BODY	WATER TANK
75' HAL Aluminum Body	500 Gallon Poly Water Tank
COMPT, LEFT SIDE FRONT	Foam System
Full Height RollUp Forward	Foam System Not Required
COMPT, LEFT SIDE REAR	Foam Cell
Full Height RollUp Rearward	Foam Cell Not Required
COMPT, RIGHT SIDE FRONT	
Full Height RollUp Forward	
COMPT, RIGHT SIDE REAR	
Full Height RollUp Rearward	



CHASSIS	CAB	AXLE, FRONT, CUSTOM	TRANSMISSION	PUMPHOUSE	CROSSLAYS, 1.50"	SPEEDLAYS
Enforcer Chassis	7000 Enforcer Cab	20,000 Lb Dana Axle	Allison 6th Gen, 3000 EV5 P	52" Control Zone Side Mount	(2) 1.50" Standard Capacity	Speedlays Not Required
<b>ENGINE</b>	<b>BUMPER</b>	<b>AXLE, REAR</b>		<b>PUMP</b>	<b>CROSSLAYS, 2.50"</b>	<b>GENERATOR</b>
450 HP Cummins L9 Engine	22" Extended Stainless Steel	33,500 Lb Meritor Axle		2000 GPM Waterous CSU	(1) 2.50" Standard Capacity	Generator Not Required

NOTE	11. TWO PEBBOARD ON BACK WALLS PER ORDER
DIMENSIONS SHOWN ARE APPROXIMATE AND ARE SUBJECT TO MINOR DEVIATIONS AS MAY OCCUR OR BE NECESSARY IN CONSTRUCTION. MINOR DETAILS NOT SHOWN.	12. THREE 120V RECEPTACLES PER ORDER
1. NO LIMITED RETRACTION REQUIRED	13. RUNG LIGHTING ON AERIAL LADDER PER ORDER
2. ONE 1.50" OUTLET WITH 2.00" PIPING AND SWIVEL LOCATED IN CENTER BUMPER TRAY	
3. SHORELINE RECEPTACLE WITH KUSSMALL SUPER AUTO-EJECT LOCKED ON DRIVER SIDE OF THE CAB	
4. AIR INLET WITH DISCONNECT COUPLING IN THE DRIVER SIDE STEPWELL	
5. BATTERY CHARGER LOCATED PER ORDER	
6. BATTERY CHARGE INDICATOR LOCATED ON THE DRIVER SIDE SEAT RISER	
7. FOUR ADJUSTABLE SHELVES LOCATED PER ORDER	
8. THREE FLOOR MOUNTED SLIDE-OUT TRAYS LOCATED PER ORDER	
9. 1.50" RAISED AERIAL PEDESTAL	
10. 1500 GPM HIGH FLOW WATERWAY	

Pierce MANUFACTURING INC.		JOB NO.	39797
		SCALE	1:24
		DATE	09MAR23
		DRAWN BY	LWE
		CHECKED BY	NAK
		DATE	10MAR23
		SHEET SIZE	D
		SHEET NO.	1 OF 1
CHASSIS DATA	TITLE	75 AERIAL LADDER & BODY ASSEMBLY (HAL)	
MAKE	FOR	PERU FIRE DEPARTMENT PERU, IN	
MODEL	DWG NO.	39797AD	
ENFORCER	REV	DATE	BY
	22JUN23	LWE	CLM
	08MAY23	LWE	CLM