

PUMPER BODY

Medium Aluminum 2nd Gen Pumper

CHASSIS

Enforcer Chassis

CHASSIS AXLE, FRONT, CUSTOM

19,500 Lb TAK-4 Axle

AXLE, REAR

27,000 Lb Meritor Axle

ENGINE

450 HP Cummins L9 Engine

TRANSMISSION

Allison 6th Gen, 3000 EVS P

BUMPER

19" Extended Painted Steel

CAB

8410 Enforcer Cab

BODY

WATER TANK

750 Gallon New York Style Water Tank

COMPT, PUMPER, REAR

30.75" FF RollUp Rear Compt

COMPT, PUMPER, LEFT SIDE

152" RollUp Full Height Front & Rear FDLR

COMPT, PUMPER, RIGHT SIDE

152" RollUp Full Height Front & Rear FDLR

FIRE SUPPRESSION PUMPHOUSE

48" Control Zone Side Mount

PUMP

1750 GPM Waterous CSU

CROSSLAYS, 1.50"

1.50" Crosslays Not Required

CROSSLAYS, 2.50"

2.50" Crosslay Not Required

SPEEDLAYS

Speedlays Not Required

GENERATOR

Generator Not Required

Foam System

Provisions For Husky Foam Systems

Foam Cell

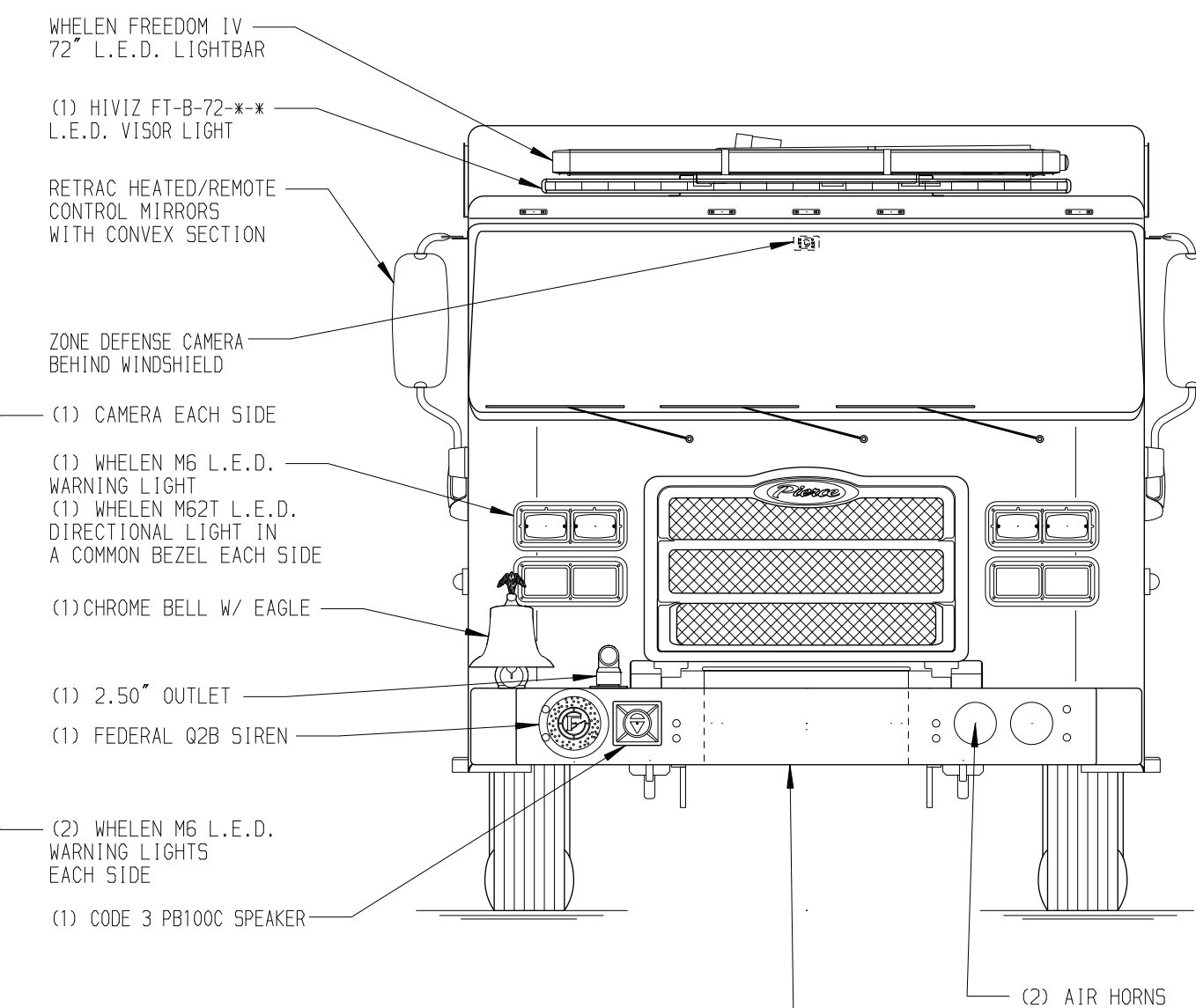
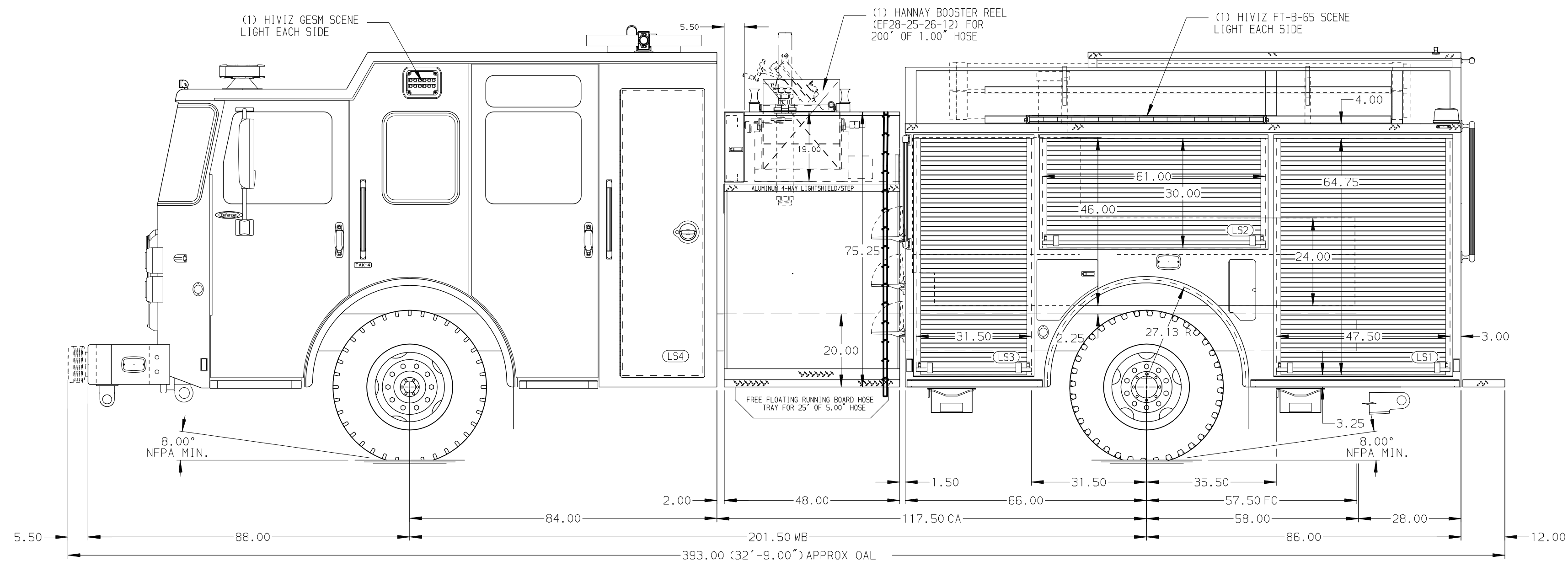
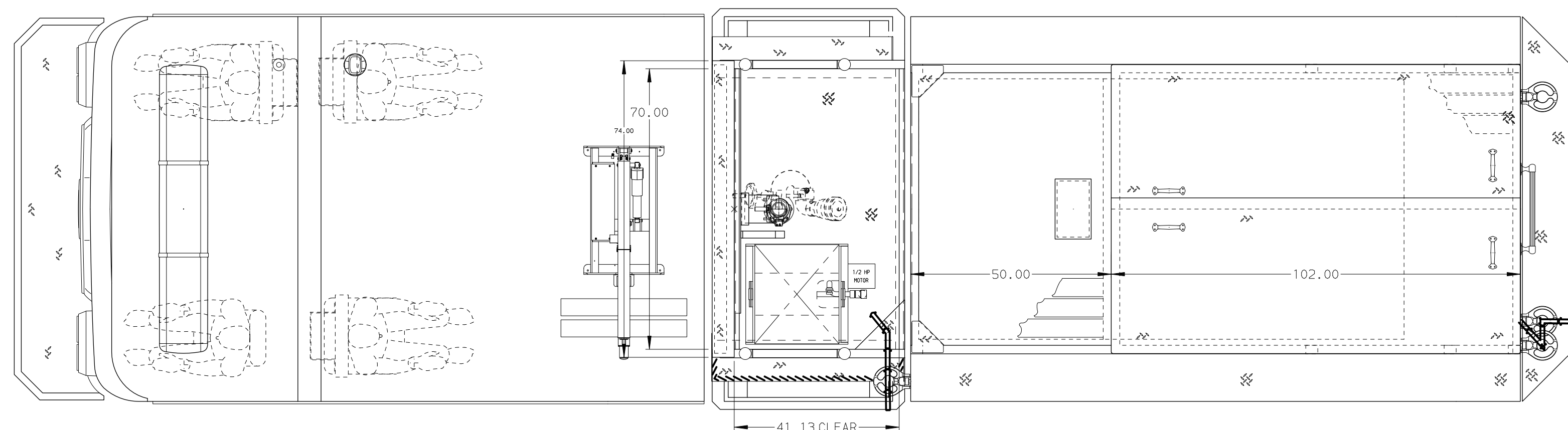
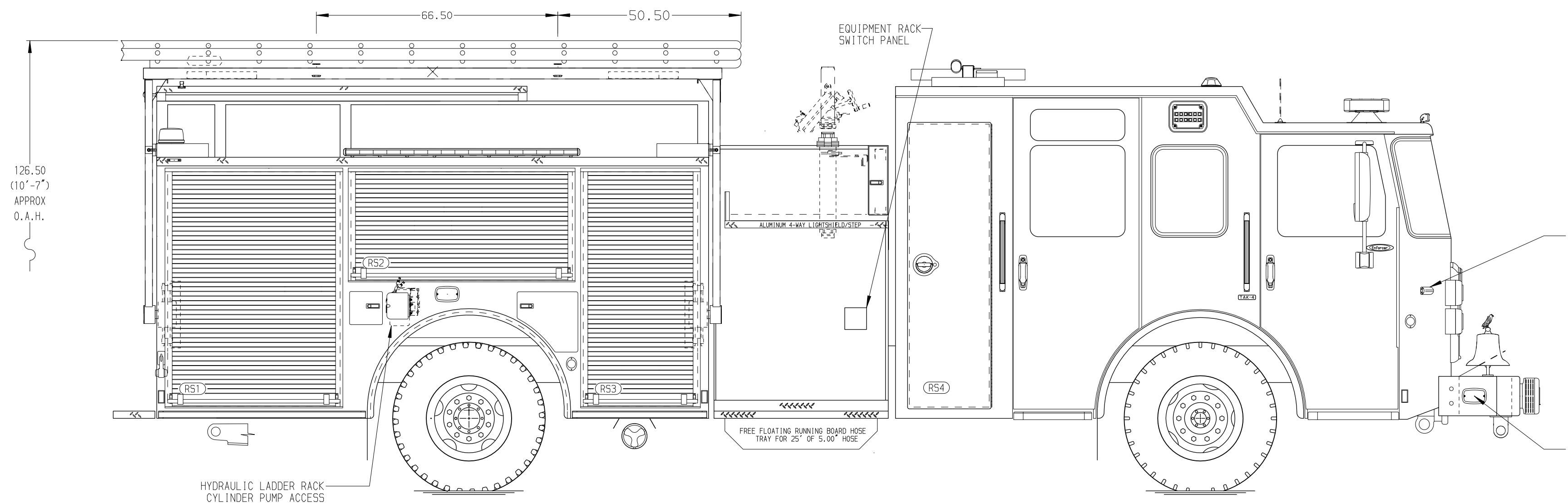
No Foam Cell Modification

Side Roll and Frontal Impact Protection

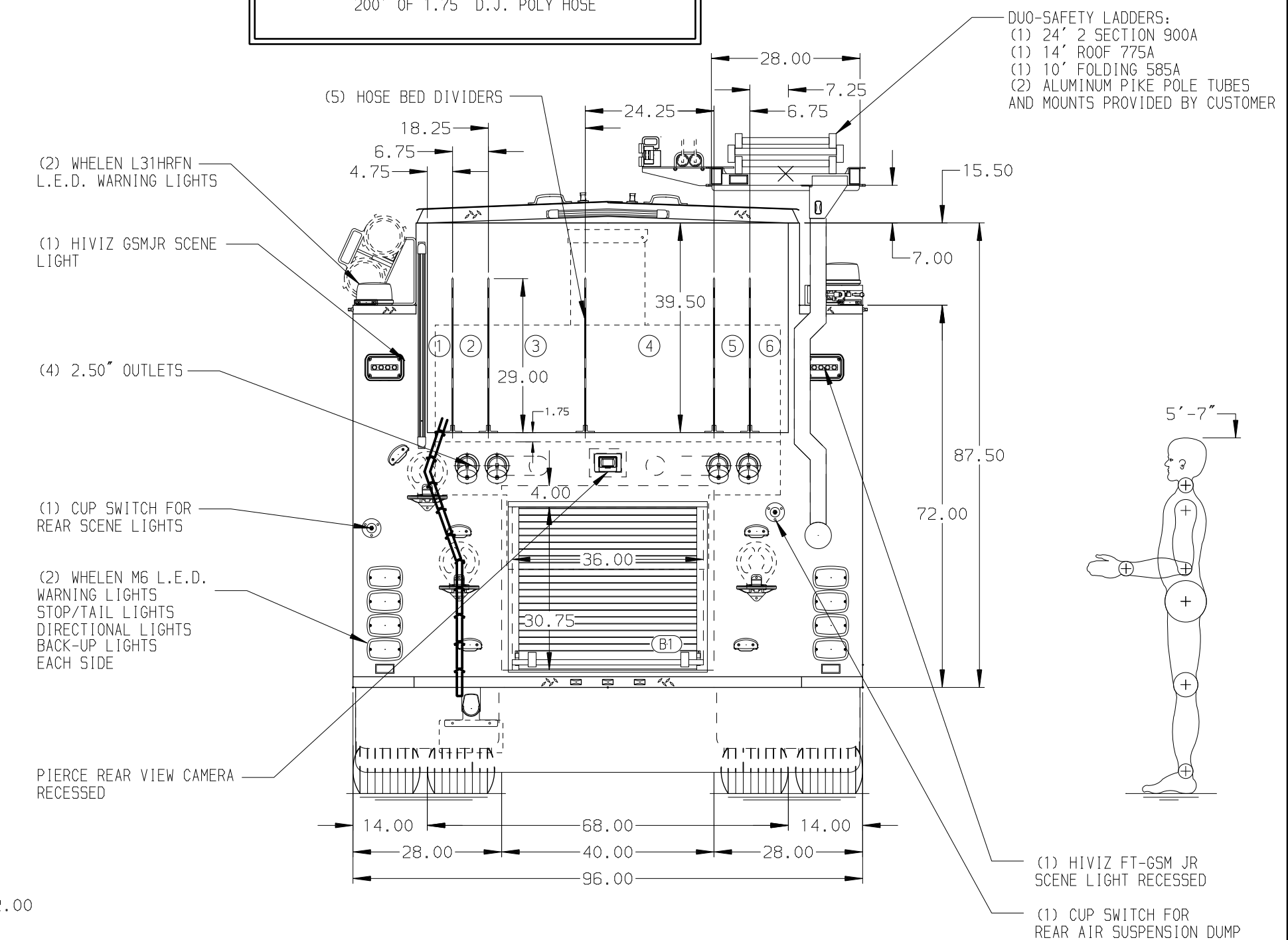
NOTE

DIMENSIONS SHOWN ARE APPROXIMATE AND ARE SUBJECT TO MINOR DEVIATIONS AS MAY OCCUR OR BE NECESSARY IN CONSTRUCTION. MINOR DETAILS NOT SHOWN.

- ONE 1.50" OUTLET WITH 2.00" PIPING AND SMIVEL LOCATED ON TOP BUMPER RIGHT SIDE
- SHORELINE RECEPTACLE WITH KUSSMAUL SUPER AUTO-EJECT LOCATED IN THE DRIVER SIDE STEPWELL
- AIR INLET WITH DISCONNECT COUPLING IN THE DRIVER SIDE STEPWELL
- BATTERY CHARGER LOCATED PER ORDER
- FIVE ADJUSTABLE SHELVES LOCATED PER ORDER
- THREE FLOOR MOUNTED SLIDE-OUT TRAYS LOCATED PER ORDER
- PROVISIONS FOR HUSKY FOAM SYSTEM LOCATED PER SHOP ORDER
- AUTOMATIC TIRE CHAINS
- ONE SLIDE-OUT TRAY LOCATED PER SHOP ORDER



HOSEBED CAPACITY	
BED 1	200' OF 2.50" D.J. POLY HOSE
BED 2	200' OF 1.75" D.J. POLY HOSE
BED 3	600' OF 2.50" D.J. POLY HOSE
BED 4	800' OF 5.00" D.J. POLY HOSE
BED 5	300' OF 1.75" D.J. POLY HOSE
BED 6	200' OF 1.75" D.J. POLY HOSE



		JOB NO.	39850
		SCALE	DATE
TITLE	Pierce Pumper Approval Packet		
FOR	Albany Fire Department		
DWG NO.	39850AD		
CHECKED BY	AM1	SHEET NO.	1 OF 1
DRAWN BY	WRE	SHEET SIZE	D

REV	DATE	BY	CH	ENFORCER
27NOV23	MMF	GKH		CHASSIS DATA
17NOV23	MMF	GKH		MAKE
25AUG23	MMF	GKH		PIERCE
23AUG23	MMF	GKH		MODEL