

PUMPER BODY

Medium Aluminum 2nd Gen Pumper

CHASSIS

Enforcer Chassis

CHASSIS AXLE, FRONT, CUSTOM

22,800 Lb TAK-4 Axle

AXLE, REAR

24,000 Lb Dana Axle

ENGINE

510 HP Paccor MX13 Engine

TRANSMISSION

Allison 6th Gen, 4000 EVS P

BUMPER

26" Extended Painted Steel

CAB

7000 Enforcer Cab

BODY WATER TANK

500 Gallon New York Style Water Tank

COMPT, PUMPER, REAR

30.75" FF RollUp Rear Compt

COMPT, PUMPER, LEFT SIDE

152" RollUp Full Height Front & Rear FDLR

COMPT, PUMPER, RIGHT SIDE

152" RollUp 3/4 Height Front & Rear FDLR

FIRE SUPPRESSION PUMPHOUSE

45" Control Zone Top Mount

PUMP

2000 GPM Waterous CSU

CROSSLAYS, 1.50"

(1) 1.50" Crosslay

CROSSLAYS, 2.50"

(1) 2.50" Crosslay

SPEEDLAYS

Speedlays Not Required

GENERATOR

Generator Not Required

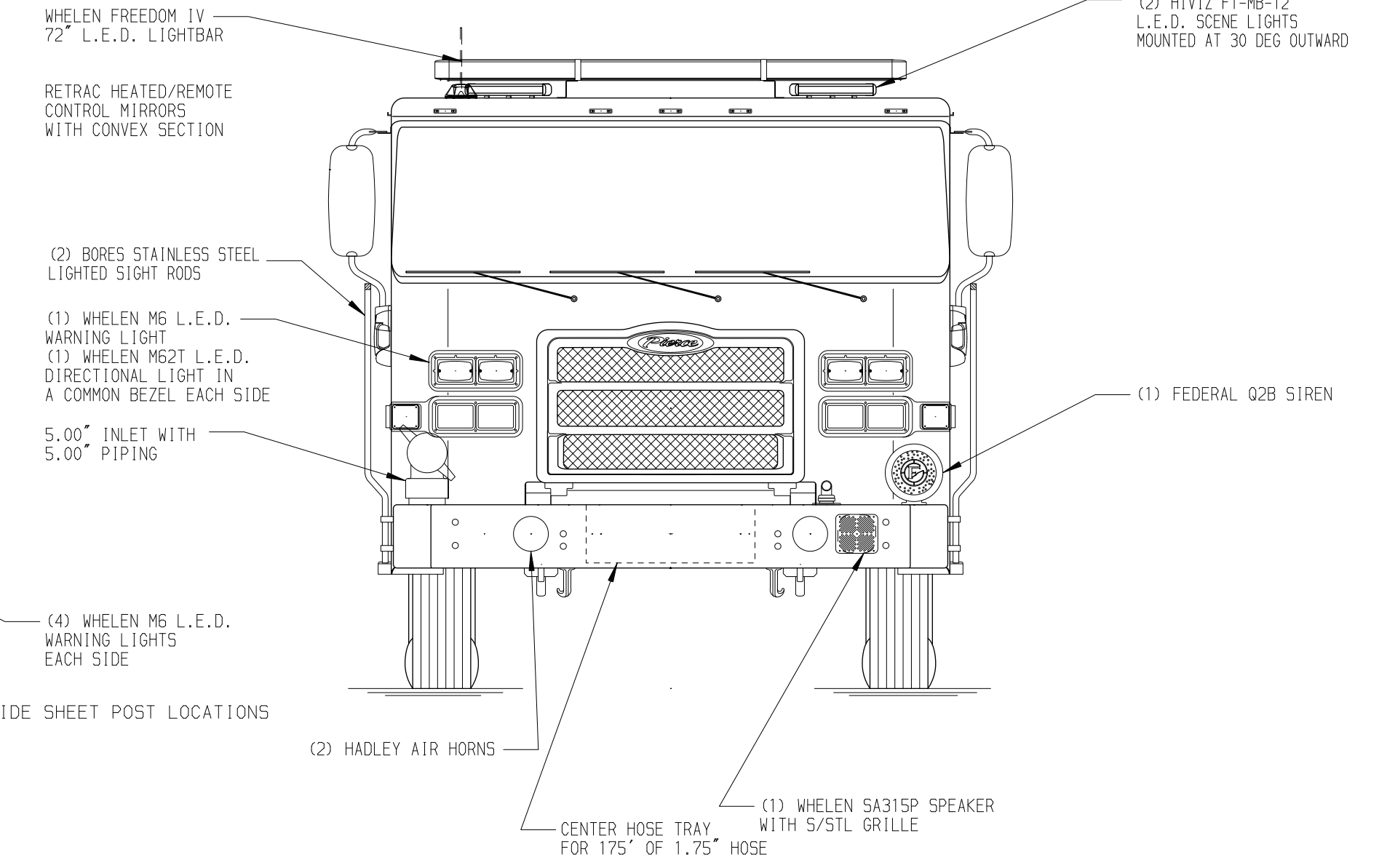
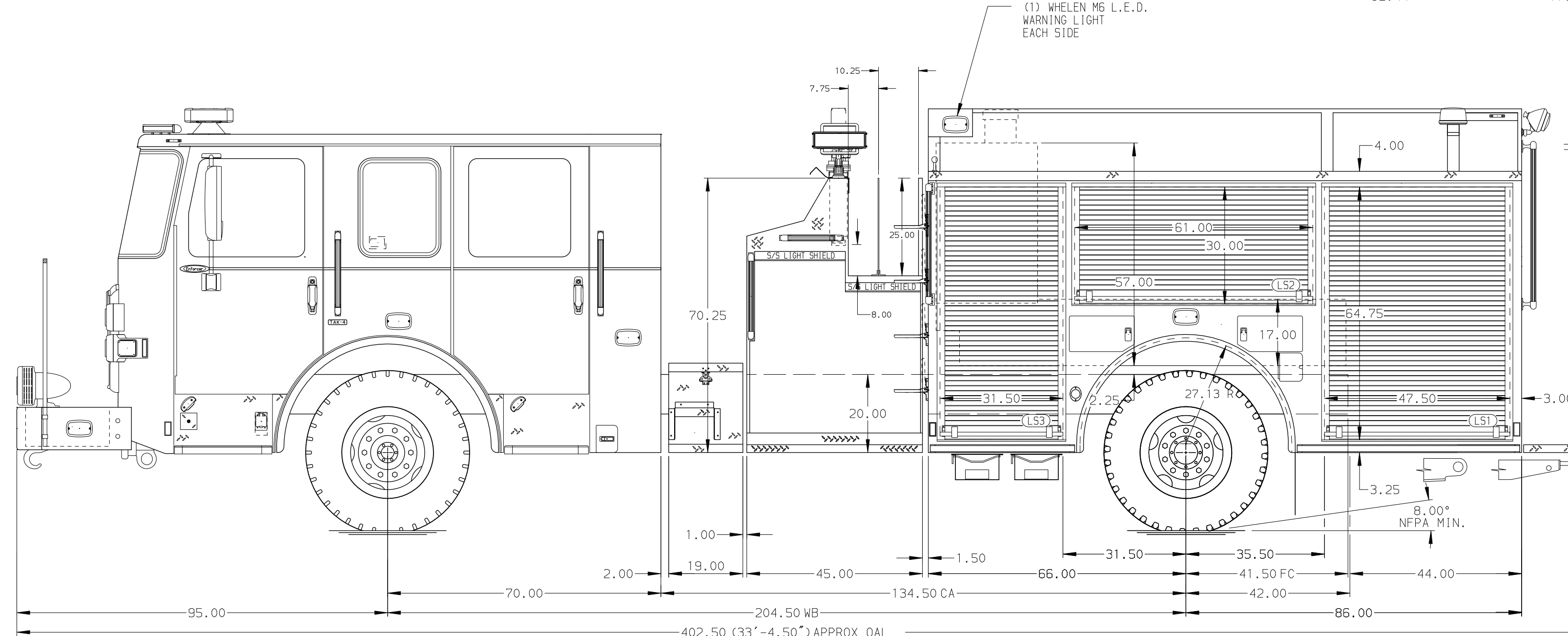
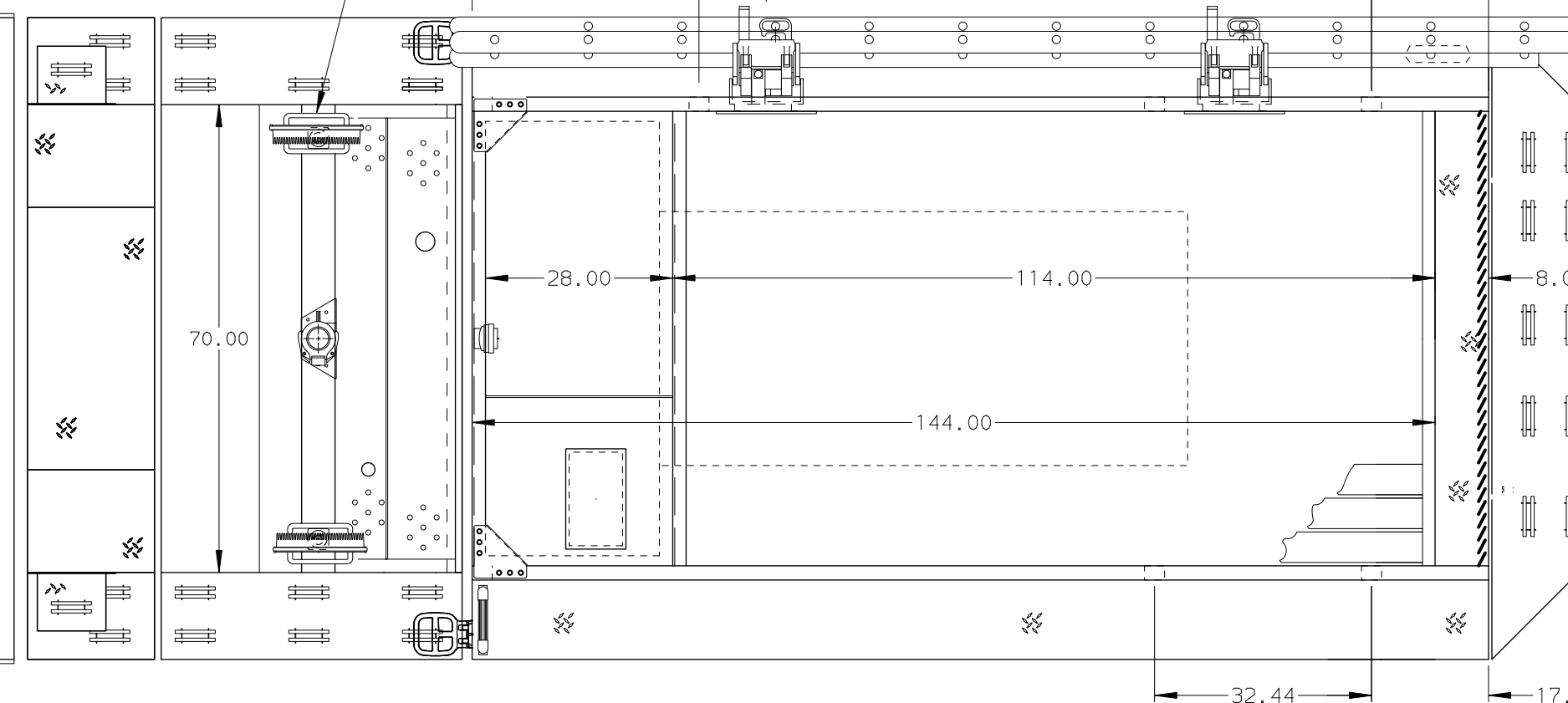
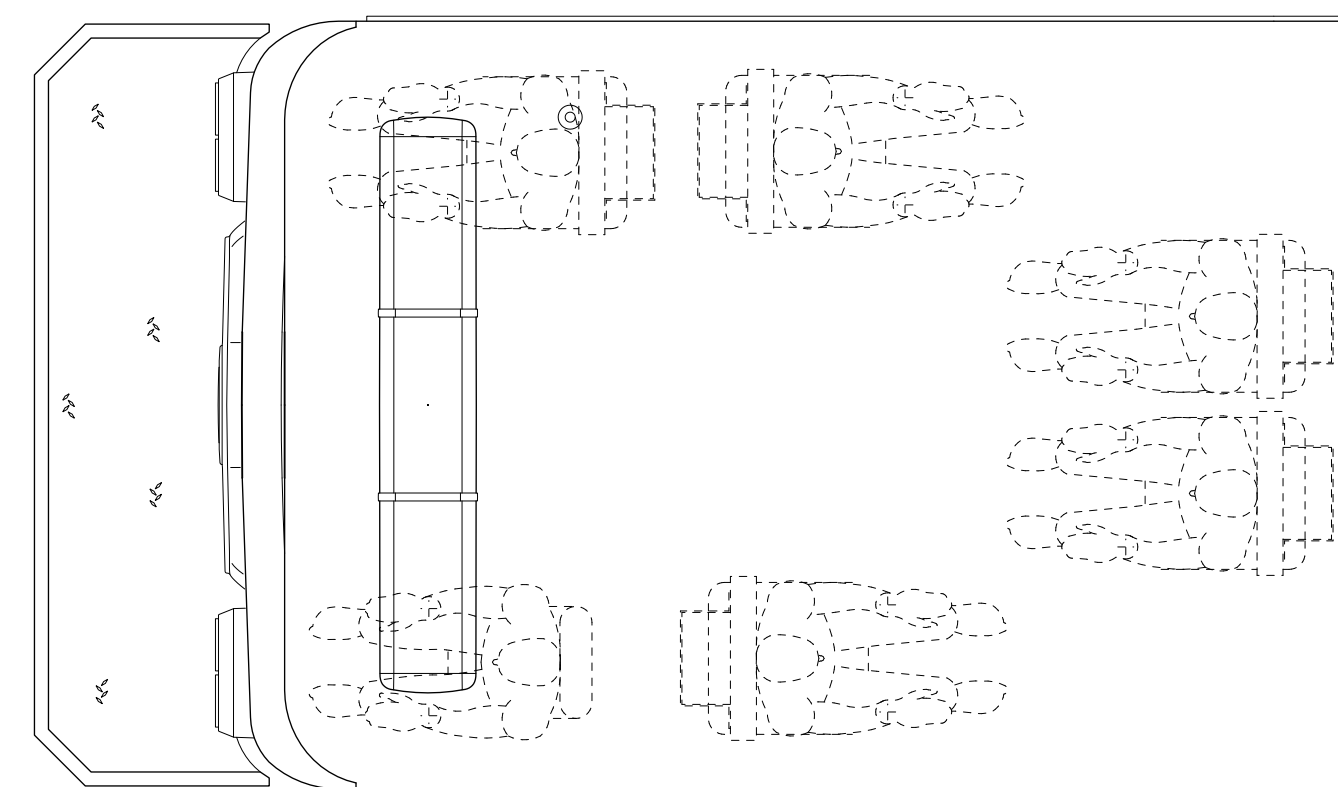
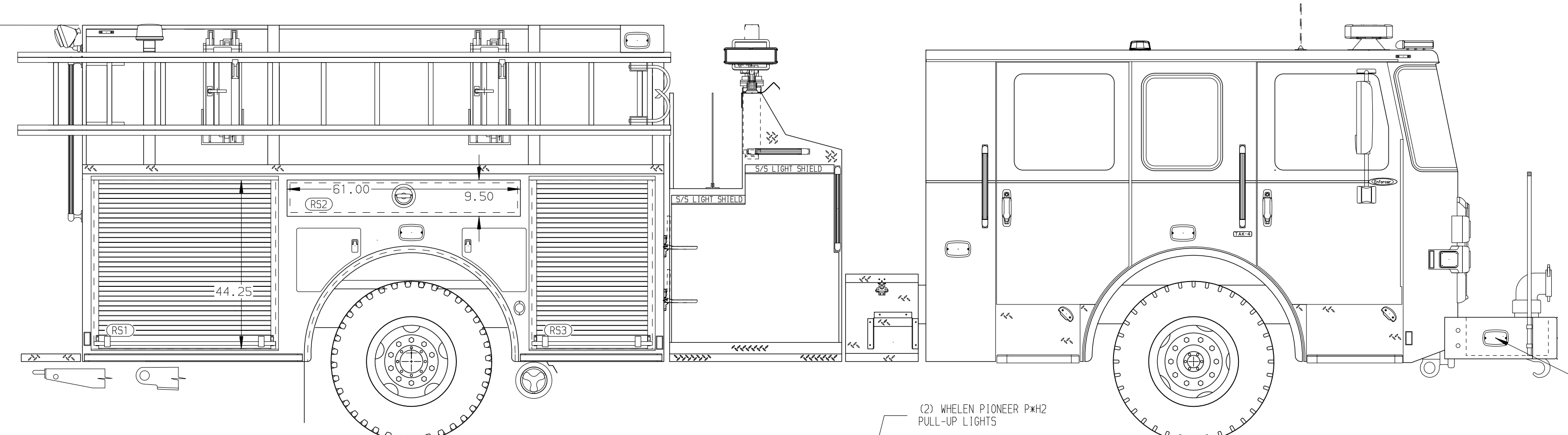
Foam System

Foam System Not Required

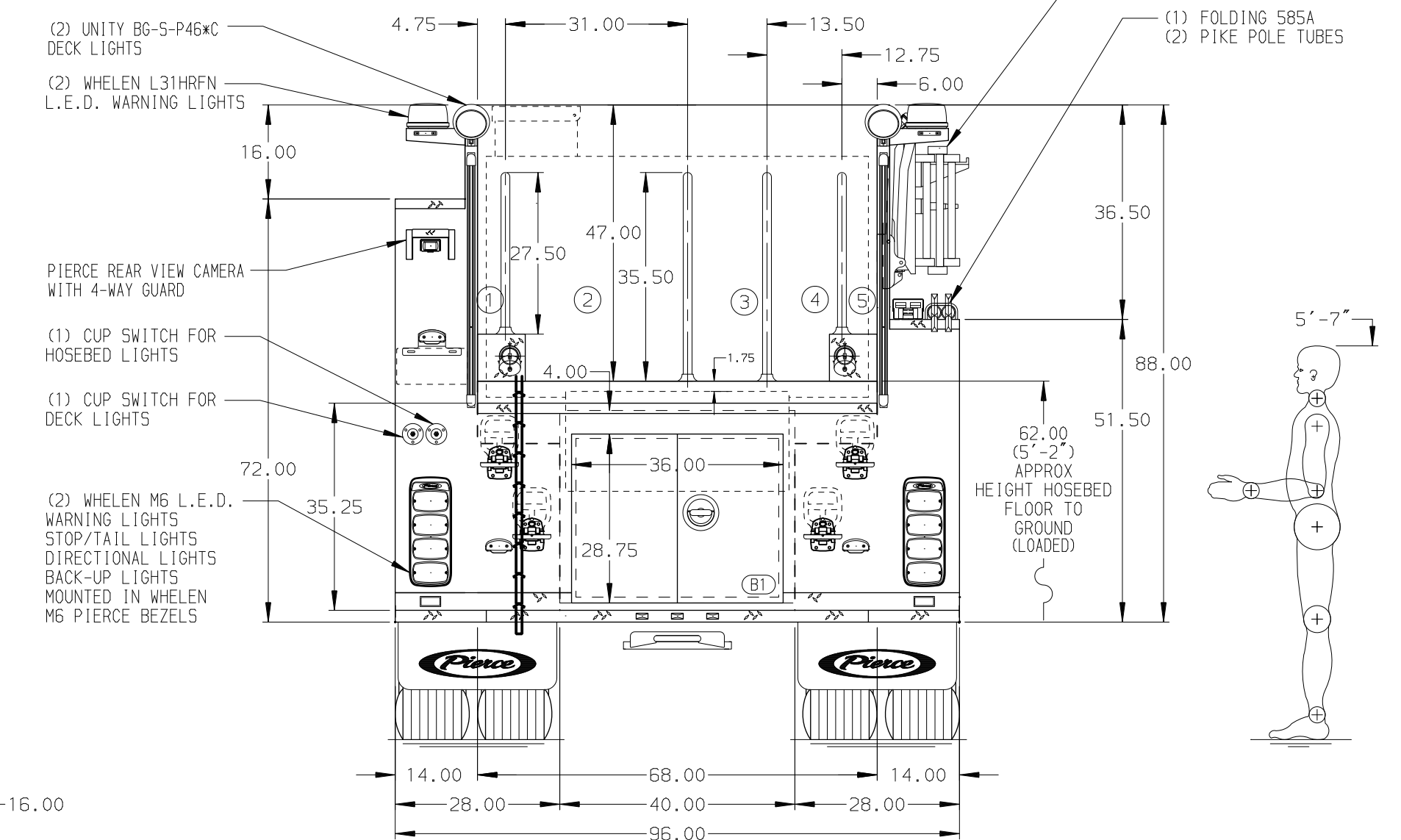
Foam Cell

Foam Cell Not Required

113.00 (9'-5") APPROX O.A.H.



HOSEBED CAPACITY	
BED 1	200' OF 1.75" D.J. POLY HOSE
BED 2	1200' OF 5.00" D.J. POLY HOSE
BED 3	600' OF 3.00" D.J. POLY HOSE
BED 4	600' OF 3.00" D.J. POLY HOSE
BED 5	200' OF 2.50" D.J. POLY HOSE



NOTE
DIMENSIONS SHOWN ARE APPROXIMATE AND ARE SUBJECT TO MINOR DEVIATIONS AS MAY OCCUR OR BE NECESSARY IN CONSTRUCTION. MINOR DETAILS NOT SHOWN.

- 1. ONE 1.50 OUTLET WITH 2.00 PIPING AND SWIVEL LOCATED ON TOP BUMPER LEFT SIDE
- 2. SHORELINE RECEPTACLE WITH KUSSMAUL SUPER AUTO-EJECT LOCATED ON DRIVER SIDE OF THE CAB
- 3. AIR INLET WITH DISCONNECT COUPLING IN THE DRIVER SIDE STEPWELL
- 4. BATTERY CHARGER LOCATED PER ORDER
- 5. BATTERY CHARGE INDICATOR LOCATED ON THE DRIVER SIDE THROUGH WINDOW

REV	DATE	BY	CH	ENFORCER
1	12SEP23	MMF	KBO	PIERCE
2	08JUN23	COL	KBO	MODEL

		JOB NO.	40026 01-12
		SCALE	DATE
TITLE	Pierce Pumper Approval Drawing		
FOR	Indianapolis Fire Department		
DWG NO.	40026AD-SH1		
DRAWN BY	MMF	CHECKED BY	COL
SHEET SIZE	D	SHEET NO.	1 OF 1