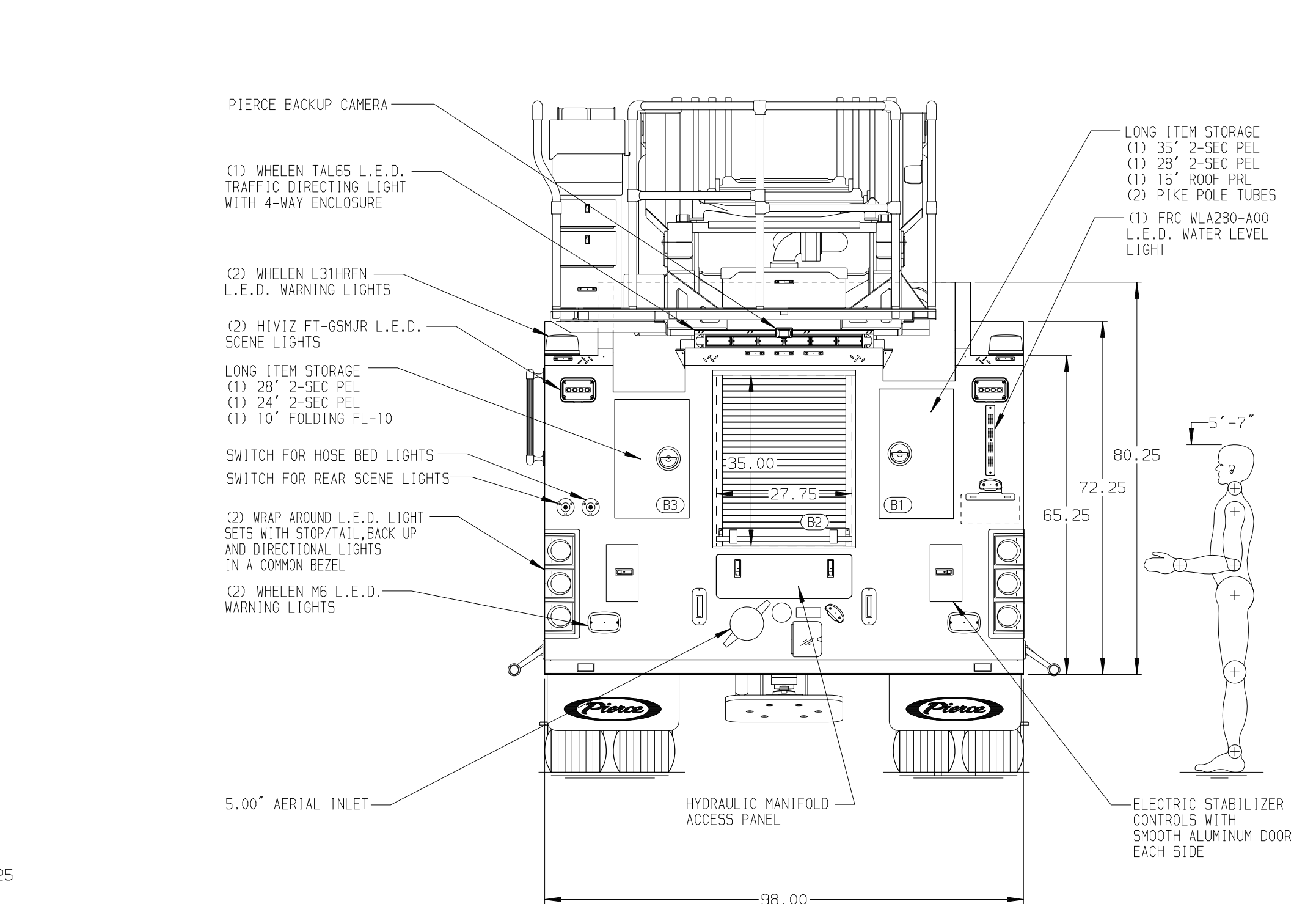
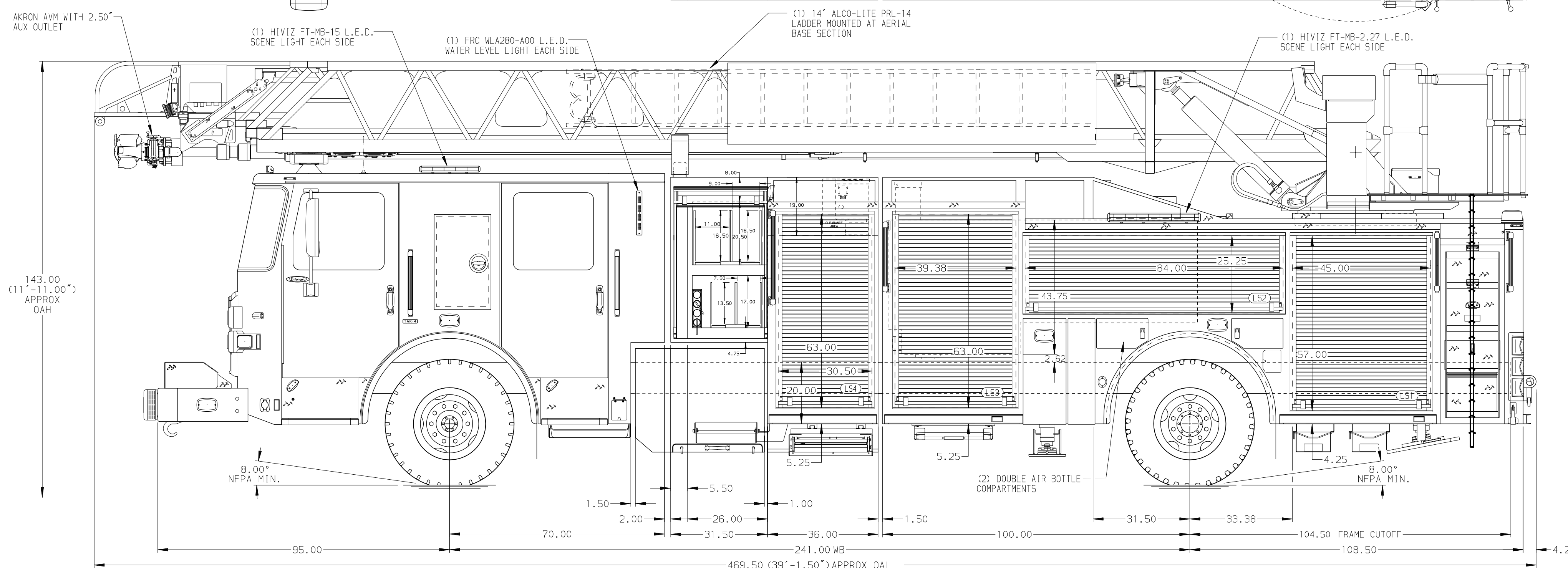


<p>BODY</p> <p>107' ASL Aluminum Body PUC</p> <p>COMPT, LEFT SIDE FRONT</p> <p>Full Height RollUp Forward</p> <p>COMPT, LEFT SIDE REAR</p> <p>Full Height RollUp Rearward</p> <p>COMPT, RIGHT SIDE FRONT</p> <p>Full Height RollUp Forward</p> <p>COMPT, RIGHT SIDE REAR</p> <p>Full Height RollUp Rearward</p>	<p>WATER TANK</p> <p>500 Gallon Poly Water Tank</p> <p>Foam System</p> <p>Husky 3 Single Agent Foam System</p> <p>Foam Cell</p> <p>20 Gallon Foam Cell, Reduced Water, PUC</p>
--	---



<p>CHASSIS</p> <p>Enforcer Chassis, PUC</p> <p>ENGINE</p> <p>510 HP Paccor MX13 Engine</p>	<p>CAB</p> <p>7000 Enforcer Cab, PUC</p> <p>BUMPER</p> <p>26\"/> </p>	<p>AXLE, FRONT, CUSTOM</p> <p>24,000 Lb TAK-4 Axle</p> <p>AXLE, REAR</p> <p>33,500 Lb Meritor Axle</p>	<p>TRANSMISSION</p> <p>Allison 6th Gen, 4000 EV5 P</p>	<p>PUMPHOUSE</p> <p>Control Zone, PAL/PAP PUC</p> <p>PUMP</p> <p>1500 GPM Pierce PUC</p>	<p>CROSSLAYS, 1.50\"/></p> <p>(2) 1.50\", Poly Trays, 200'</p> <p>CROSSLAYS, 2.50\"/></p> <p>(1) 2.50\", Poly Tray, 200'</p>	<p>DEADLAYS</p> <p>(1) 3.00\", Poly Tray, 200'</p> <p>GENERATOR</p> <p>Generator Not Required</p>	<p>SAFETY</p> <p>Side Roll and Frontal Impact Protection</p>
<p>NOTE</p> <p>DIMENSIONS SHOWN ARE APPROXIMATE AND ARE SUBJECT TO MINOR DEVIATIONS AS MAY OCCUR OR BE NECESSARY IN CONSTRUCTION. MINOR DETAILS NOT SHOWN.</p>							
<p>1. NO LIMITED RETRACTION REQUIRED</p> <p>2. ONE 1.50\"/> </p>							
<p>11. TECH10 RING LIGHTING AT AERIAL DEVICE</p> <p>12. 1500 GPM HIGH FLOW WATERWAY</p> <p>13. NON-RAISED AERIAL PEDESTAL</p> <p>14. LIFTING EYE ROPE RESCUE ATTACHMENT AT AERIAL TIP</p> <p>15. FIRE RESEARCH 2-WAY INTERCOM</p>							

<p>Pierce MANUFACTURING INC.</p>		<p>JOB NO. 40086</p>
<p>CHASSIS DATA</p>		<p>SCALE 1:24 DATE</p>
<p>TITLE 107' ASCENDANT AERIAL LADDER AND BODY ASSEMBLY</p>		<p>DRAWN BY ANZ 12JUL23</p>
<p>FOR JEFFERSON TOWNSHIP FIRE DEPARTMENT - BLACKLICK</p>		<p>CHECKED BY NAK 14JUL23</p>
<p>DWG NO. 40086AD</p>		<p>SHEET SIZE D SHEET NO. 1 OF 1</p>