

PUMPER BODY

Medium Aluminum 2nd Gen Pumper

CHASSIS

Enforcer Chassis

CHASSIS AXLE, FRONT, CUSTOM
19,500 Lb TAK-4 Axle

AXLE, REAR
27,000 Lb Meritor Axle

ENGINE
370 HP Cummins L9 Engine

TRANSMISSION
Allison 6th Gen, 3000 EVS P

BUMPER
22" Extended Painted Steel

CAB

7010 Enforcer Cab

BODY WATER TANK

1000 Gallon Poly Water Tank

COMPT, PUMPER, REAR
37.75" FF RollUp Rear Compt

COMPT, PUMPER, LEFT SIDE
152" RollUp Full Height Front Full Height & Depth Rear, Cleveland Notch 6"

COMPT, PUMPER, RIGHT SIDE
152" RollUp Full Height Front & Rear FDLER

FIRE SUPPRESSION PUMPHOUSE

42" Control Zone Top Mount

PUMP

1500 GPM Hale QMAX

CROSSLAYS, 1.50"
1.50" Crosslays Not Required

CROSSLAYS, 2.50"
2.50" Crosslay Not Required

SPEEDLAYS

(2) 1.50" W/Tray Std. Capacity
(1) 2.50" W/Tray Std. Capacity

GENERATOR

Generator Not Required

Foam System

Foam System Not Required

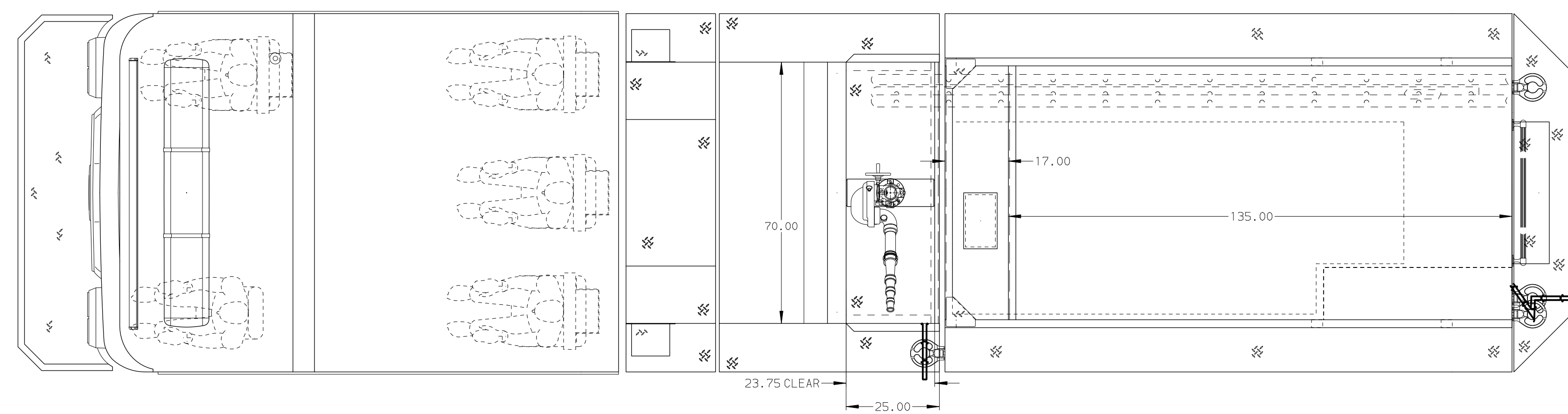
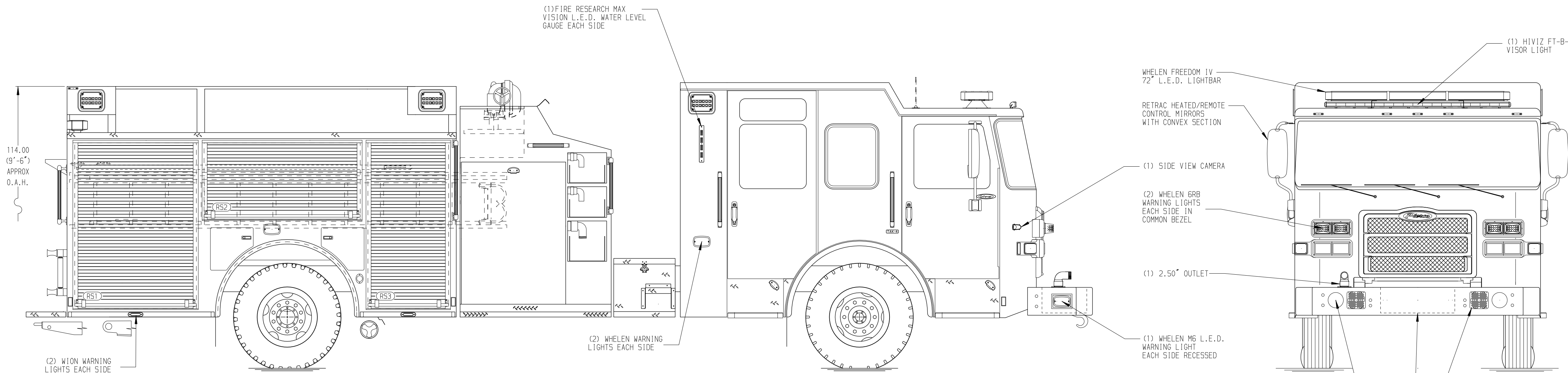
Foam Cell

Foam Cell Not Required

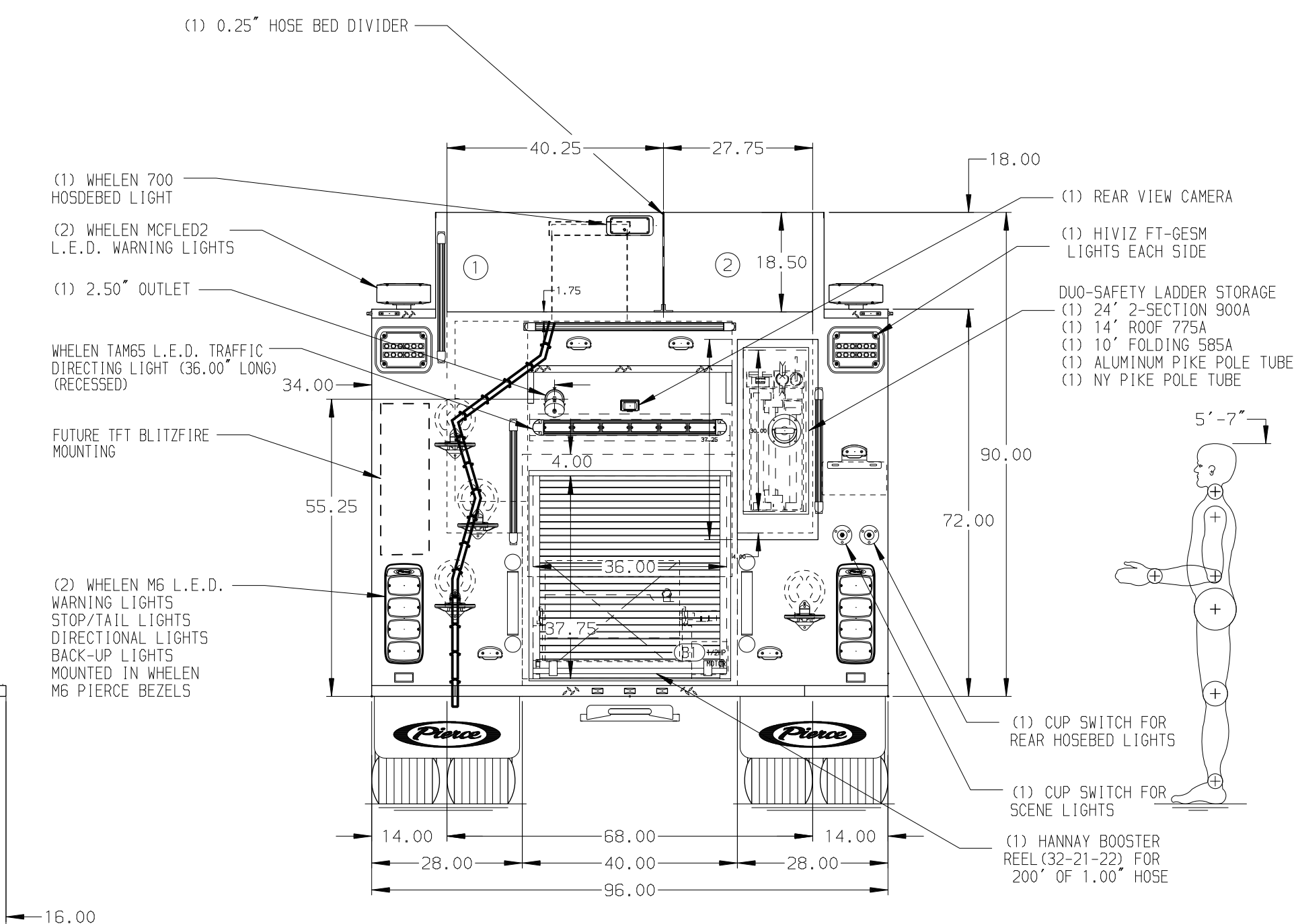
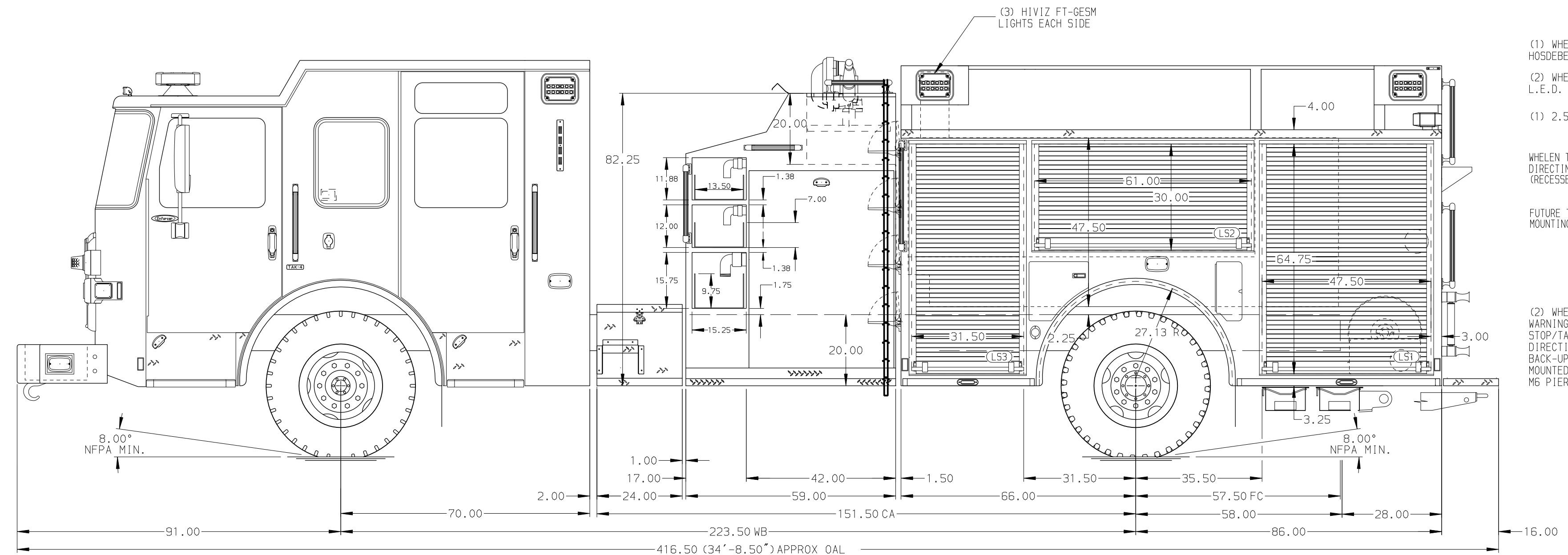
Side Roll and Frontal Impact Protection

NOTE
DIMENSIONS SHOWN ARE APPROXIMATE AND ARE SUBJECT TO MINOR DEVIATIONS AS MAY OCCUR OR BE NECESSARY IN CONSTRUCTION. MINOR DETAILS NOT SHOWN.

1. SHORELINE RECEPTACLE WITH KUSSMAUL SUPER AUTO-EJECT LOCATED ON DRIVER SIDE OF THE CAB
2. AIR INLET WITH DISCONNECT COUPLING IN THE DRIVER SIDE PUMP PANEL
3. ONE BATTERY CHARGER INDICATOR LOCATED THROUGH WINDOW BEHIND DRIVER SEAT



HOSEBED CAPACITY	
BED 1	1000' OF 5.00" D.J. POLY HOSE
BED 2	450' OF 3.00" D.J. POLY HOSE



MAXIMUM O.A.H. 116.00"

Pierce MANUFACTURING INC.		JOB NO.	40131
		SCALE	1:24
		DATE	
TITLE		Pierce Pumper Approval Packet	
FOR		Laredo Fire Department	
DRAWN BY		WRE	21JUN23
CHECKED BY		MMF	23JUN23
SHEET SIZE		D	SHEET NO. 1 OF 2

REV	DATE	BY	CH	ENFORCER
120CT23	MMF	KBO	MAKE	
09AUG23	MMF	KBO	PIERCE	
08AUG23	MMF	KBO	MODEL	