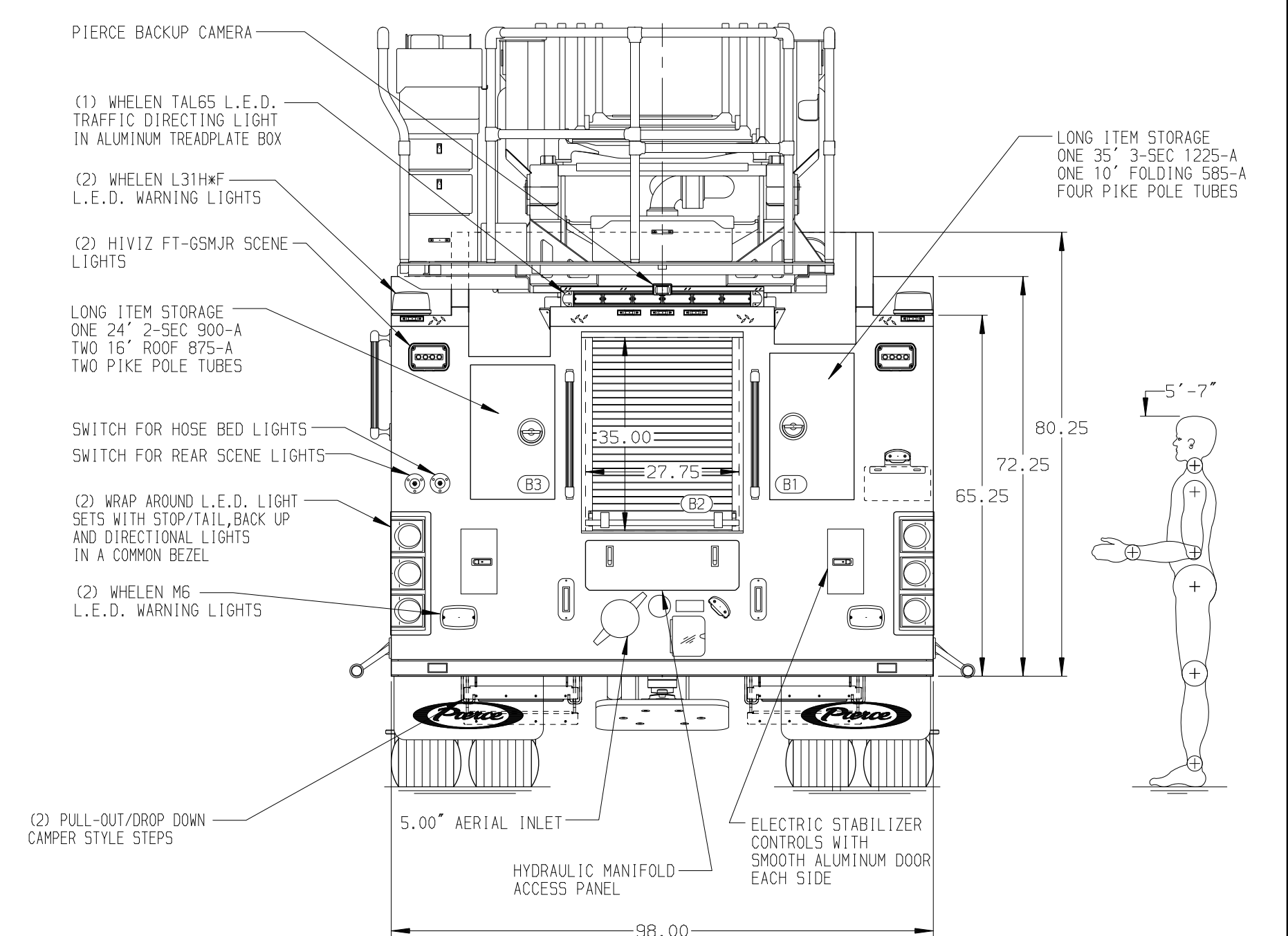
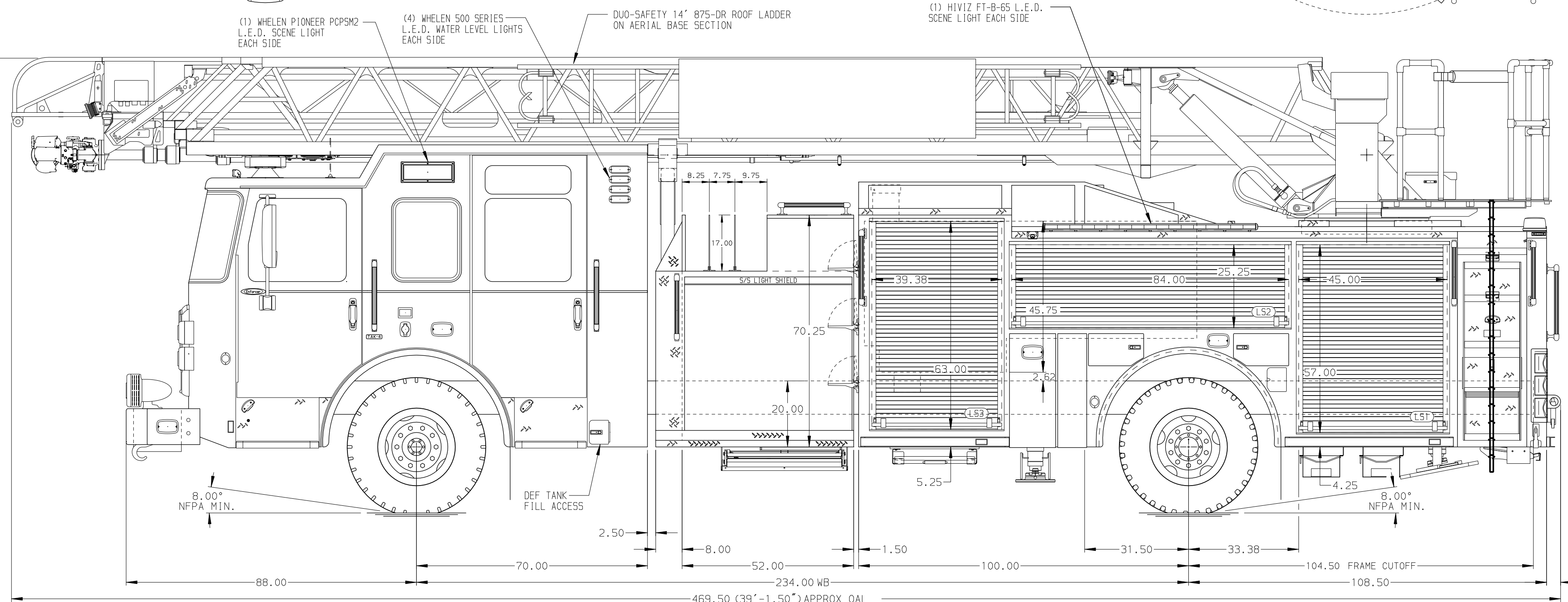
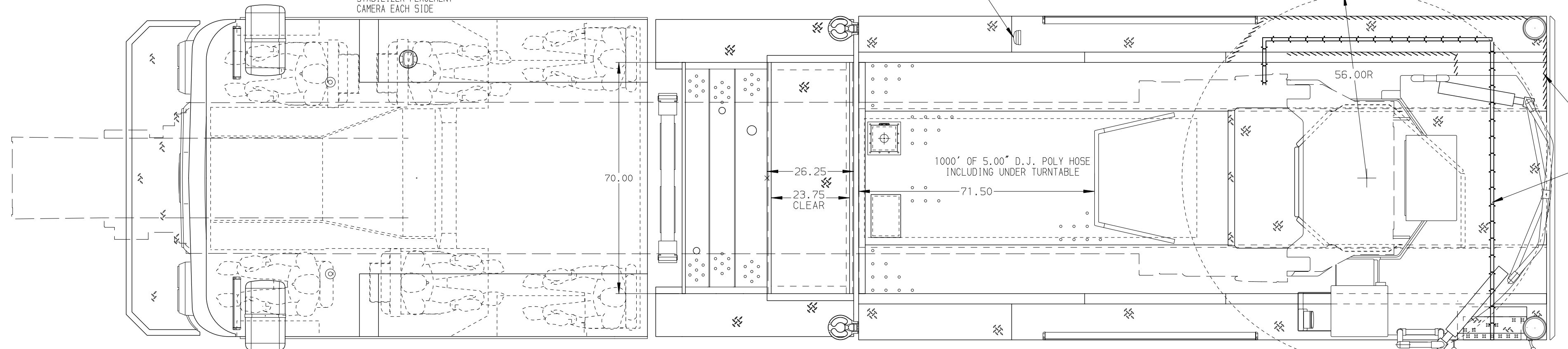


<p>BODY 107' ASL Aluminum Body</p> <p>COMPT, LEFT SIDE FRONT Full Height RollUp Forward</p> <p>COMPT, LEFT SIDE REAR Full Height RollUp Rearward</p> <p>COMPT, RIGHT SIDE FRONT Full Height RollUp Forward</p> <p>COMPT, RIGHT SIDE REAR Full Height RollUp Rearward</p>	<p>WATER TANK 500 Gallon Poly Water Tank</p> <p>Foam System Plumbing for Future Husky Foam System</p> <p>Foam Cell 20 Gallon Foam Cell, Non Reduced Water</p>
---	--



<p>CHASSIS Enforcer Chassis 510 HP Paccor MX13 Engine</p>	<p>CAB 7010 Enforcer Notched Cab 19\" Extended Painted Steel</p>	<p>AXLE, FRONT, CUSTOM 22,800 Lb TAK-4 Axle</p> <p>AXLE, REAR 33,500 Lb Meritor Axle</p>	<p>TRANSMISSION Allison 6th Gen, 4000 EV5 P</p>	<p>PUMPHOUSE 52\" Control Zone Side Mount 2000 GPM Waterous CSU</p>	<p>CROSSLAYS, 1.50\" (2) 1.50\" Standard Capacity</p> <p>CROSSLAYS, 2.50\" (1) 2.50\" Standard Capacity</p>	<p>SPEEDLAYS Speedlays Not Required GENERATOR Generator Not Required</p>	<p>SAFETY Side Roll and Frontal Impact Protection</p>	<p>CUSTOMER APPROVAL APPROVED BY: _____ DATE: _____</p>	<p>Pierce MANUFACTURING INC.</p>	<p>JOB NO. 40217 SCALE 1:24 DATE</p>
<p>NOTE DIMENSIONS SHOWN ARE APPROXIMATE AND ARE SUBJECT TO MINOR DEVIATIONS AS MAY OCCUR OR BE NECESSARY IN CONSTRUCTION. MINOR DETAILS NOT SHOWN.</p>	<p>1. ONE 1.50\" OUTLET WITH 2.00\" PIPING AND SWIVEL LOCATED IN CENTER BUMPER TRAY 2. SHOULDERLINE RECEPTACLE WITH KUSSMALL SUPER AUTO-EJECT LOCATED ON DRIVER SIDE OF THE CAB 3. AIR INLET WITH DISCONNECT COUPLING IN THE DRIVER SIDE STEPWELL 4. BATTERY CHARGER LOCATED BEHIND DRIVER SEAT 5. BATTERY CHARGE INDICATOR LOCATED ON DRIVERS SIDE CAB 6. DUAL L.E.D. LIGHT STRIPS LOCATED IN HOSE BED 7. SIX ADJUSTABLE SHELVES LOCATED IN COMPARTMENTS PER ORDER 8. THREE FLOOR MOUNTED SLIDE-OUT TRAYS LOCATED IN COMPARTMENTS PER ORDER 9. ONE ALUMINUM SWING-OUT TOOLBOARD LOCATED IN COMPARTMENT PER ORDER 10. ONE CTECH CABINET LOCATED IN COMPARTMENT PER ORDER</p>	<p>11. ONE BACKWALL MOUNTED PEGBOARD IN COMPARTMENT PER ORDER 12. LIMITED RETRACTION NOT REQUIRED 13. MOUNTING PROVISIONS FOR FRONT INLET 14. RUNG LIGHTING ON AERIAL LADDER 15. NON-RAISED AERIAL PEDESTAL 16. 1500 GPM HIGH FLOW WATERWAY</p>	<p>17. LONG ITEM STORAGE ONE 35\" 3-SEC 1225-A ONE 10\" FOLDING 585-A FOUR PIKE POLE TUBES</p>	<p>17. LONG ITEM STORAGE ONE 24\" 2-SEC 900-A TWO 16\" ROOF 675-A TWO PIKE POLE TUBES</p>	<p>17. LONG ITEM STORAGE ONE 24\" 2-SEC 900-A TWO 16\" ROOF 675-A TWO PIKE POLE TUBES</p>	<p>17. LONG ITEM STORAGE ONE 24\" 2-SEC 900-A TWO 16\" ROOF 675-A TWO PIKE POLE TUBES</p>	<p>17. LONG ITEM STORAGE ONE 24\" 2-SEC 900-A TWO 16\" ROOF 675-A TWO PIKE POLE TUBES</p>	<p>17. LONG ITEM STORAGE ONE 24\" 2-SEC 900-A TWO 16\" ROOF 675-A TWO PIKE POLE TUBES</p>	<p>17. LONG ITEM STORAGE ONE 24\" 2-SEC 900-A TWO 16\" ROOF 675-A TWO PIKE POLE TUBES</p>	<p>17. LONG ITEM STORAGE ONE 24\" 2-SEC 900-A TWO 16\" ROOF 675-A TWO PIKE POLE TUBES</p>