

**PUMPER BODY**

Long Aluminum 2nd Gen Pumper

**CHASSIS**

Enforcer Chassis

**CHASSIS AXLE, FRONT, CUSTOM**

19,500 Lb TAK-4 Axle

**AXLE, REAR**

27,000 Lb Meritor Axle

**ENGINE**

510 HP Paccar MX13 Engine

**TRANSMISSION**

Allison 6th Gen, 4000 EVS P

**BUMPER**

19" Extended Painted Steel

**CAB**

7010 Enforcer Cab

**BODY WATER TANK**

1000 Gallon Poly Water Tank

**COMPT, PUMPER, REAR**

30.75" FF RollUp Rear Compt

**COMPT, PUMPER, LEFT SIDE**

161" RollUp Full Height Front & Rear FDLR

**COMPT, PUMPER, RIGHT SIDE**

161" RollUp Full Height Front & Rear FDLR

**FIRE SUPPRESSION PUMPHOUSE**

52" Control Zone Side Mount

**PUMP**

1500 GPM Waterous CSU

**CROSSLAYS, 1.50"**

(2) 1.50" Standard Capacity

**CROSSLAYS, 2.50"**

(1) 2.50" Standard Capacity

**SPEEDLAYS**

Speedlays Not Required

**GENERATOR**

Generator Not Required

**Foam System**

Provisions for Future Husky 3/12

**Foam Cell**

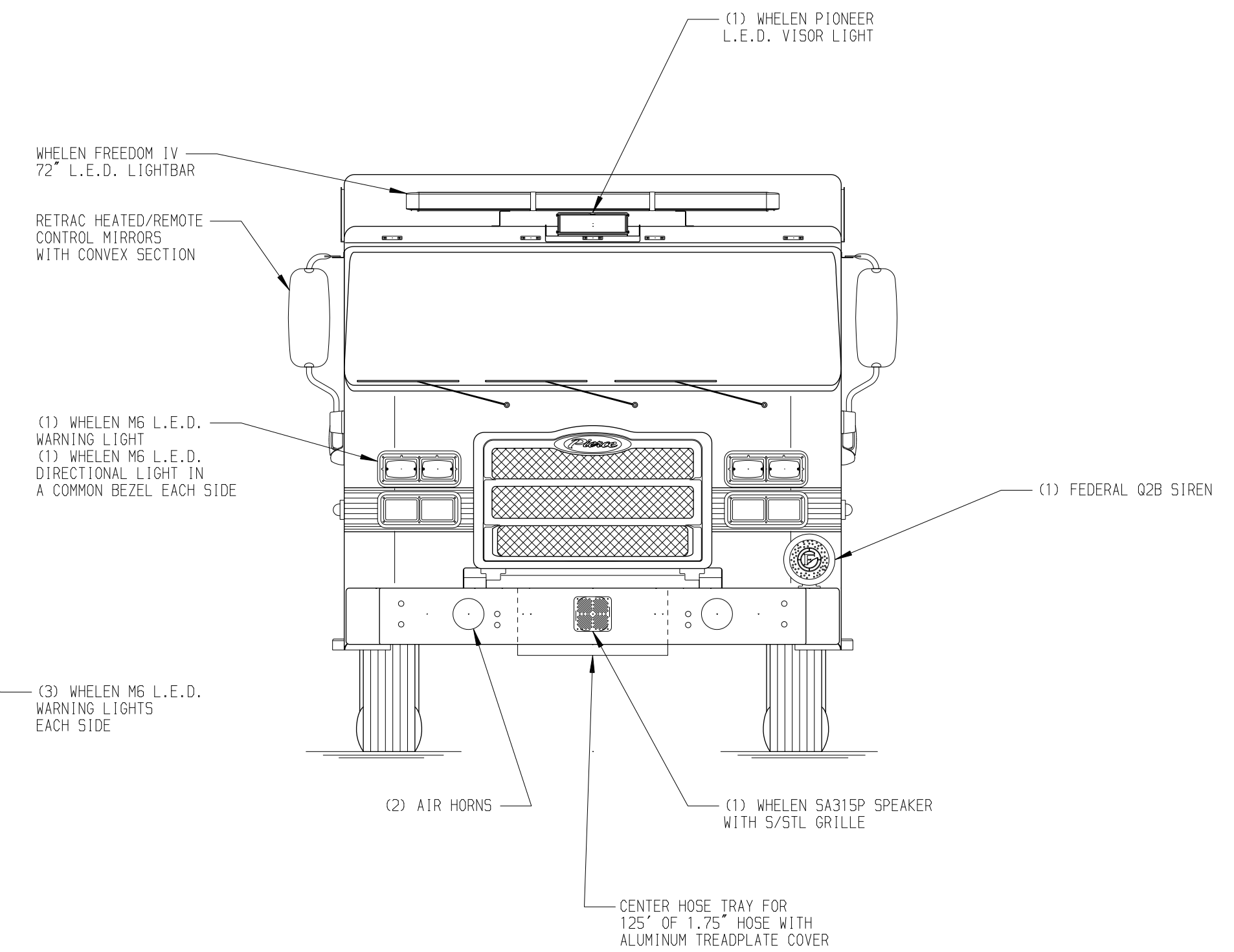
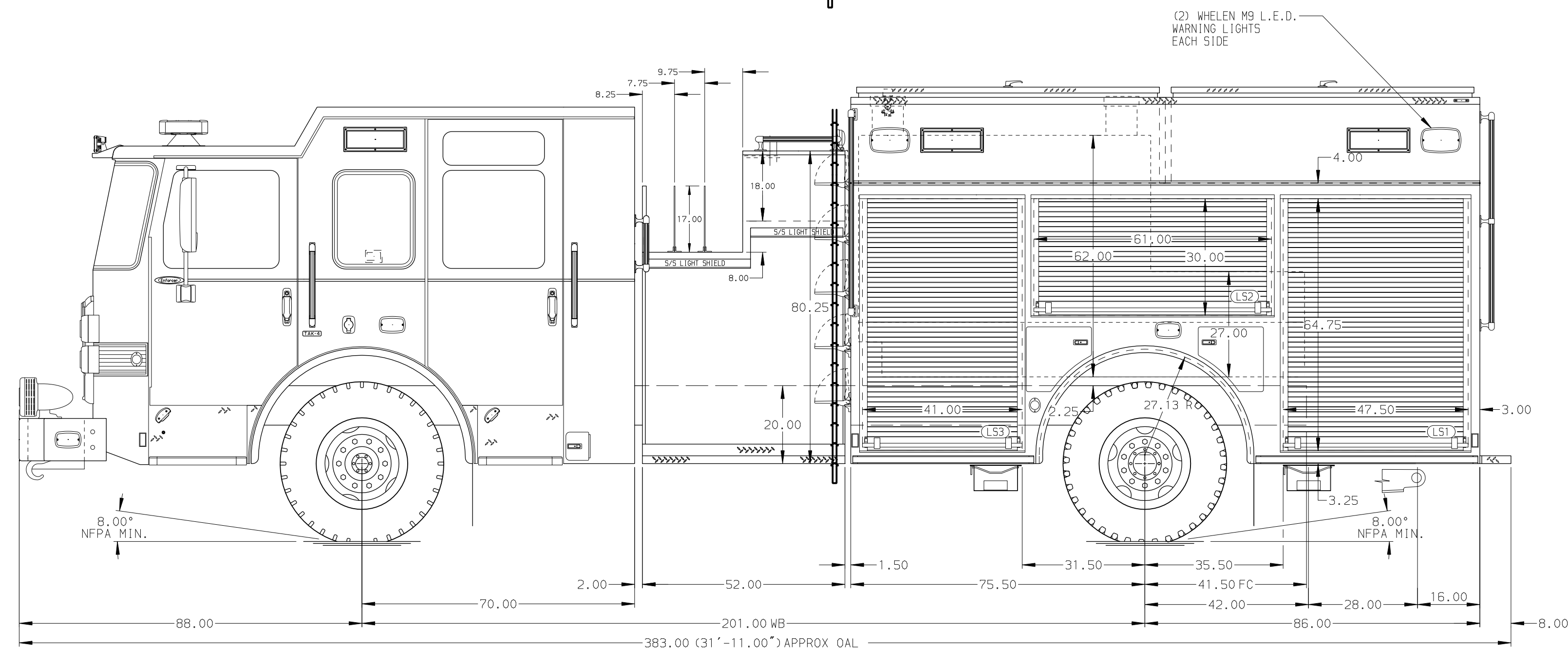
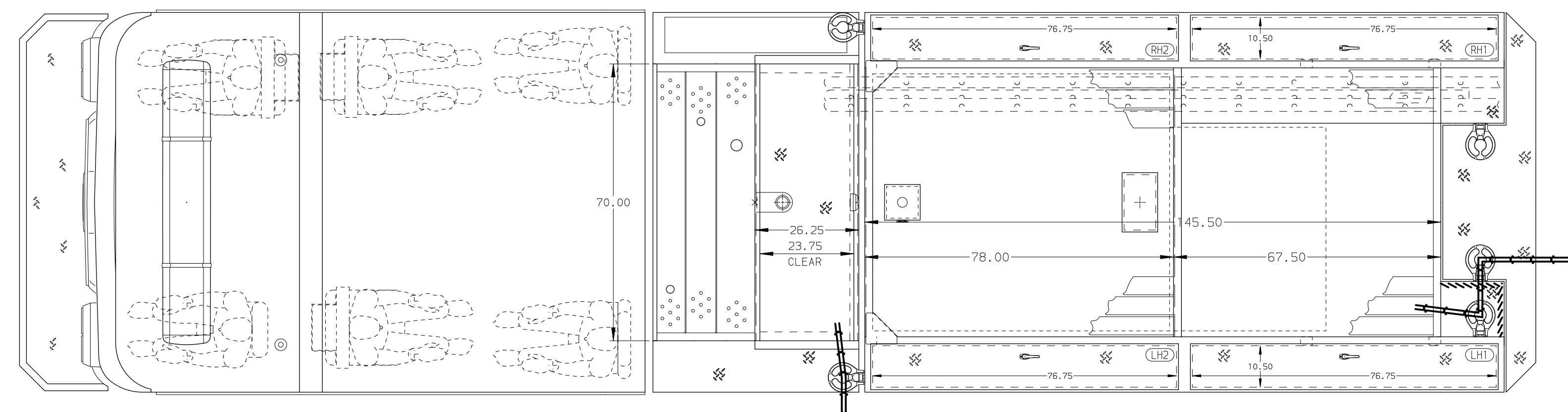
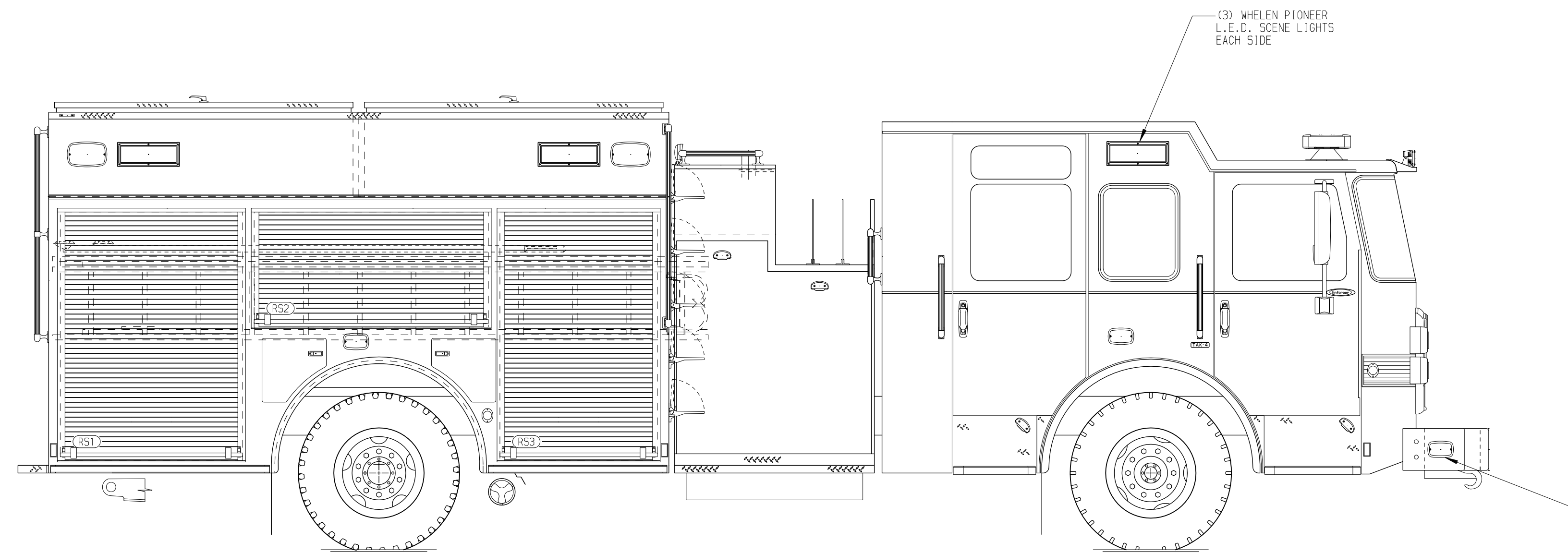
25 Gallon Foam Cell

Side Roll and Frontal Impact Protection

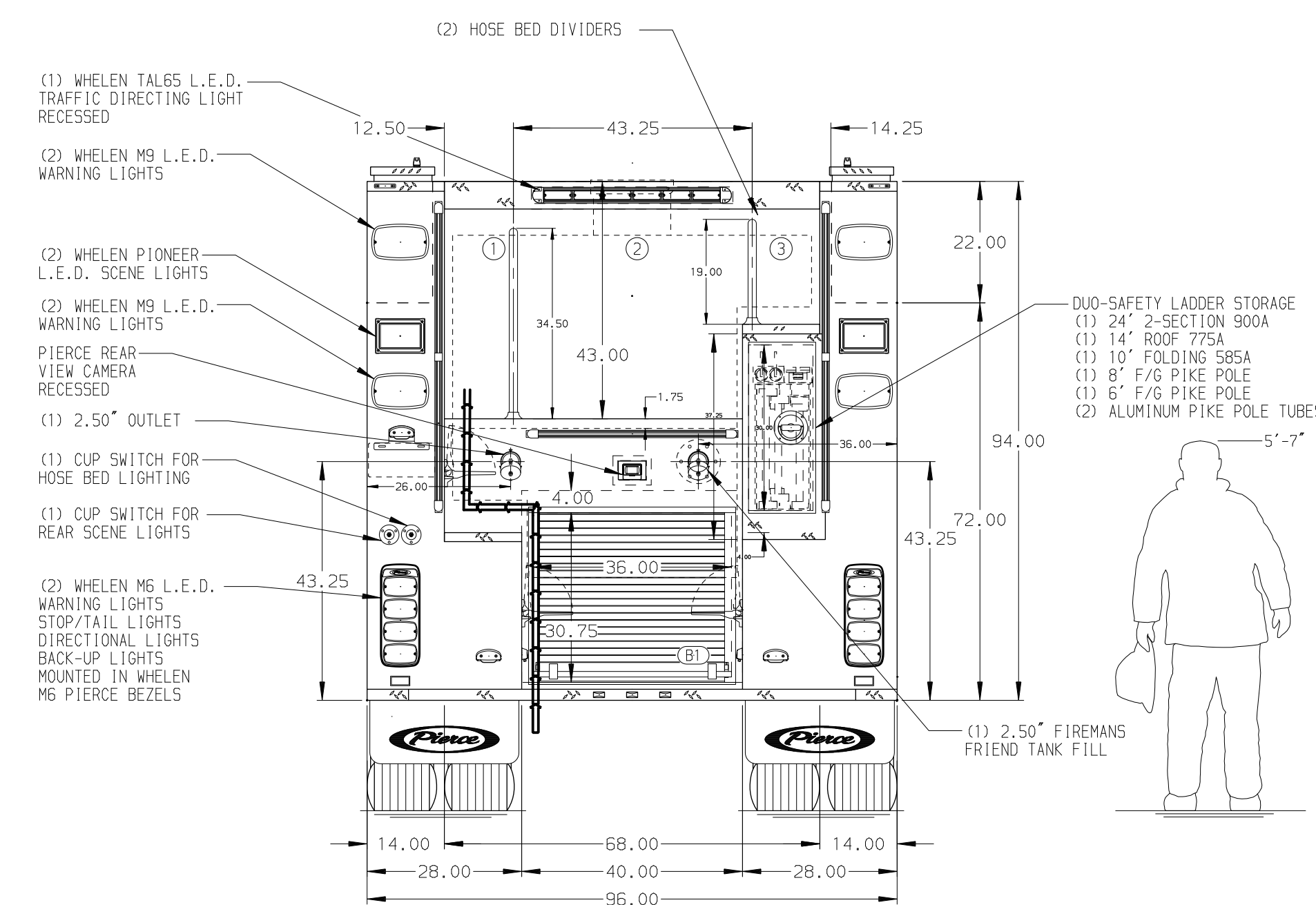
**NOTE**

DIMENSIONS SHOWN ARE APPROXIMATE AND ARE SUBJECT TO MINOR DEVIATIONS AS MAY OCCUR OR BE NECESSARY IN CONSTRUCTION. MINOR DETAILS NOT SHOWN.

- ONE 1.50" OUTLET WITH 2.00" PIPING AND SWIVEL LOCATED IN CENTER BUMPER TRAY
- SHOULDER RECEPTACLE WITH KUSSMAUL SUPER AUTO-EJECT LOCATED ON DRIVER SIDE OF THE CAB
- AIR INLET WITH DISCONNECT COUPLING IN THE DRIVER SIDE STEPWELL
- BATTERY CHARGER LOCATED BEHIND DRIVER'S SEAT
- BATTERY CHARGE INDICATOR DISPLAYED THROUGH DRIVER SIDE WINDOW
- SIX ADJUSTABLE SHELVES IN COMPARTMENTS PER SHOP ORDER
- FOUR FLOOR MOUNTED SLIDE-OUT TRAYS LOCATED PER SHOP ORDER
- PROVISIONS FOR FRONT INLET



HOSEBED CAPACITY	
<b>BED 1</b>	300' OF 3.00" D.J. POLY HOSE
<b>BED 2</b>	1000' OF 5.00" D.J. POLY HOSE
<b>BED 3</b>	250' OF 3.00" D.J. POLY HOSE



**CUSTOMER APPROVAL**

APPROVED BY: \_\_\_\_\_  
DATE: \_\_\_\_\_

REV	DATE	BY	CH	ENFORCER



TITLE	FOR	DWG NO.
Pierce Pumper Approval Drawing	Pierce Field Unit	40396AD

JOB NO.	SCALE	DATE
40396	1:24	DATE
DRAWN BY	CHECKED BY	SHEET NO.
WRE	THS	1 OF 1