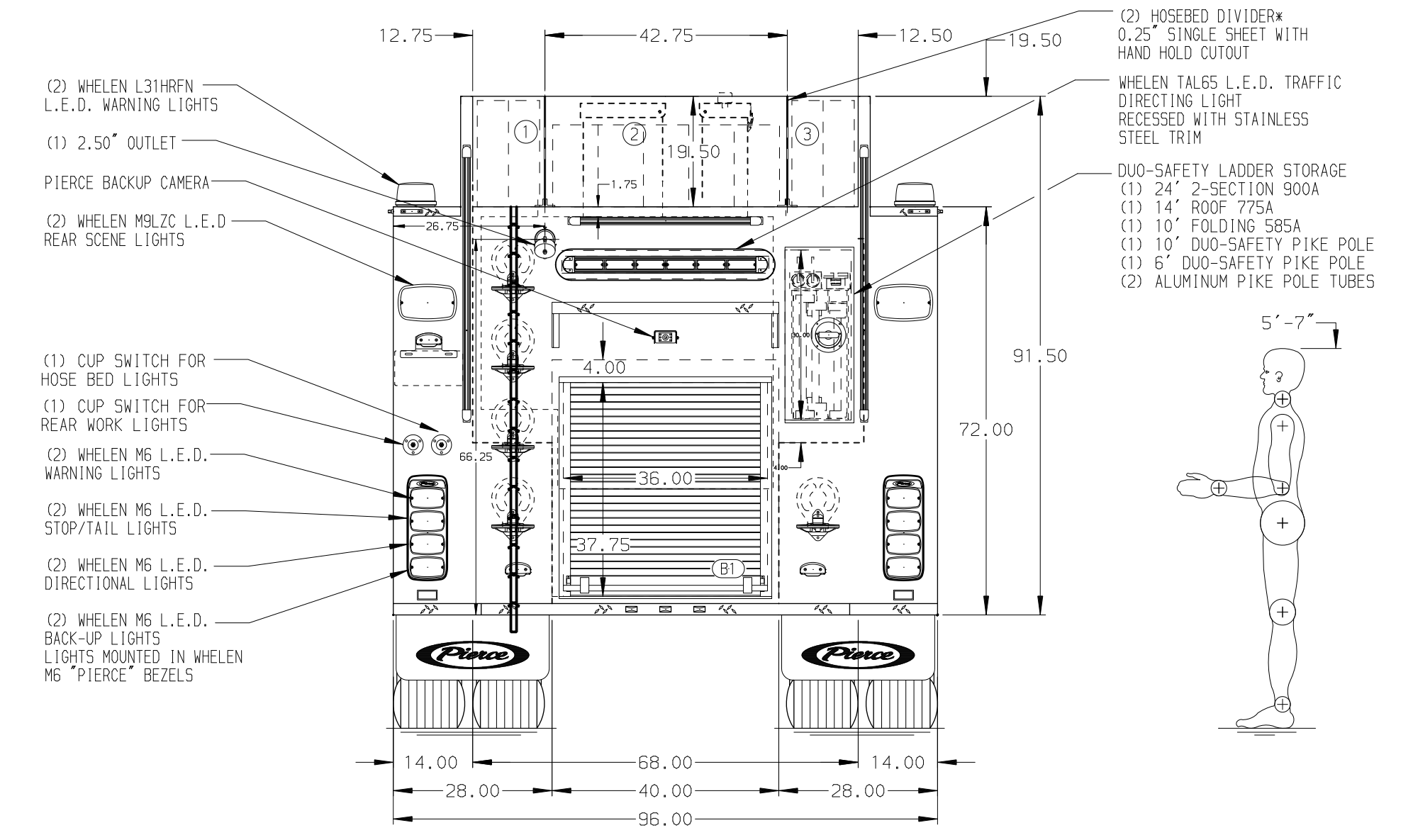
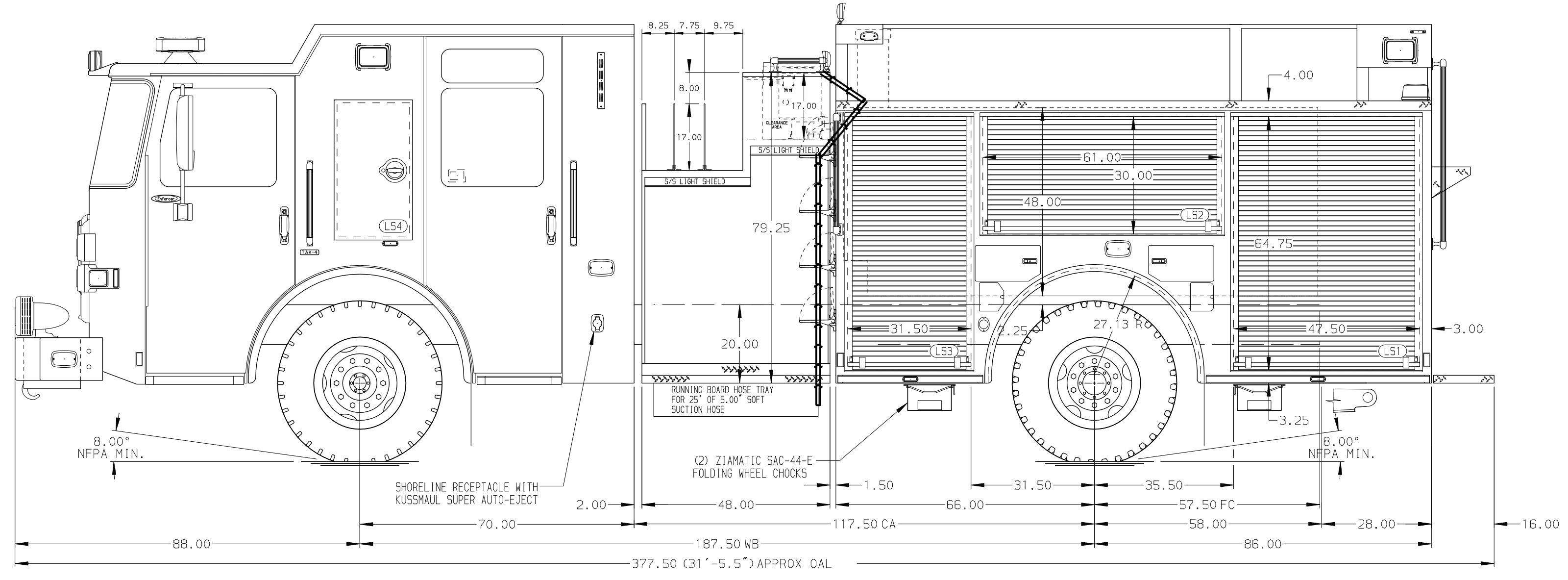


HOSEBED CAPACITIES

- 500' OF 3.00" D.J. HOSE
- 1000' OF 5.00" D.J. HOSE
- 500' OF 3.00" D.J. HOSE



ALUMINUM BODY

SIDE ROLL AND FRONTAL IMPACT PROTECTION

NOTE
DIMENSIONS SHOWN ARE APPROXIMATE AND ARE SUBJECT TO MINOR DEVIATIONS AS MAY OCCUR OR BE NECESSARY IN CONSTRUCTION. MINOR DETAILS NOT SHOWN.

- BATTERY CHARGER MOUNTED BEHIND DRIVER'S SEAT
- BATTERY CHARGER INDICATOR BEHIND DRIVER'S SEAT DISPLAYED THROUGH WINDOW
- DUAL L.E.D. LIGHT STRIPS LOCATED IN HOSE BED
- SEVEN DRIP PAN GUARDS FOR ROLL-UP DOORS LOCATED PER ORDER
- SIX FULL WIDTH/DEPTH ADJUSTABLE SHELVES LOCATED PER ORDER
- AIR INLET WITH DISCONNECT COUPLING LOCATED IN D5 STEP WELL

CUSTOMER APPROVAL

APPROVED BY: _____

DATE: _____

CHASSIS DATA	TITLE	1500-D-1000P, 980 GAL WATER W/20 GAL FOAM, 152" BODY
MAKE	FOR	PIERCE FIELD UNIT
PIERCE		APPLETON, WISCONSIN
MODEL	DWG NO.	40397AD
ENFORCER		

Pierce MANUFACTURING INC.

JOB NO. 40397

SCALE 1:24 DATE

DRAWN BY WRE 03MAR23

CHECKED BY THS 06MAR23

SHEET SIZE D SHEET NO. 1 OF 1