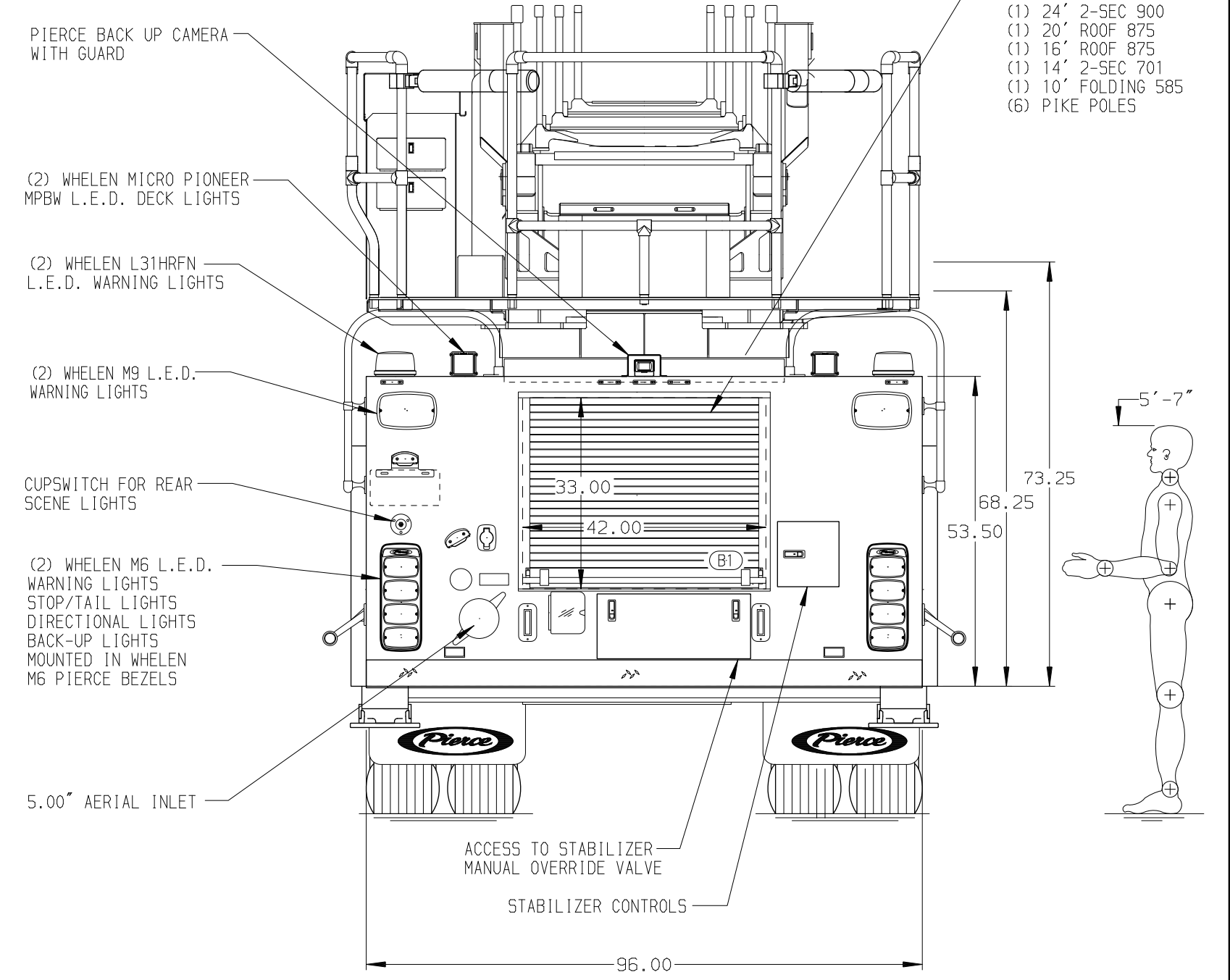
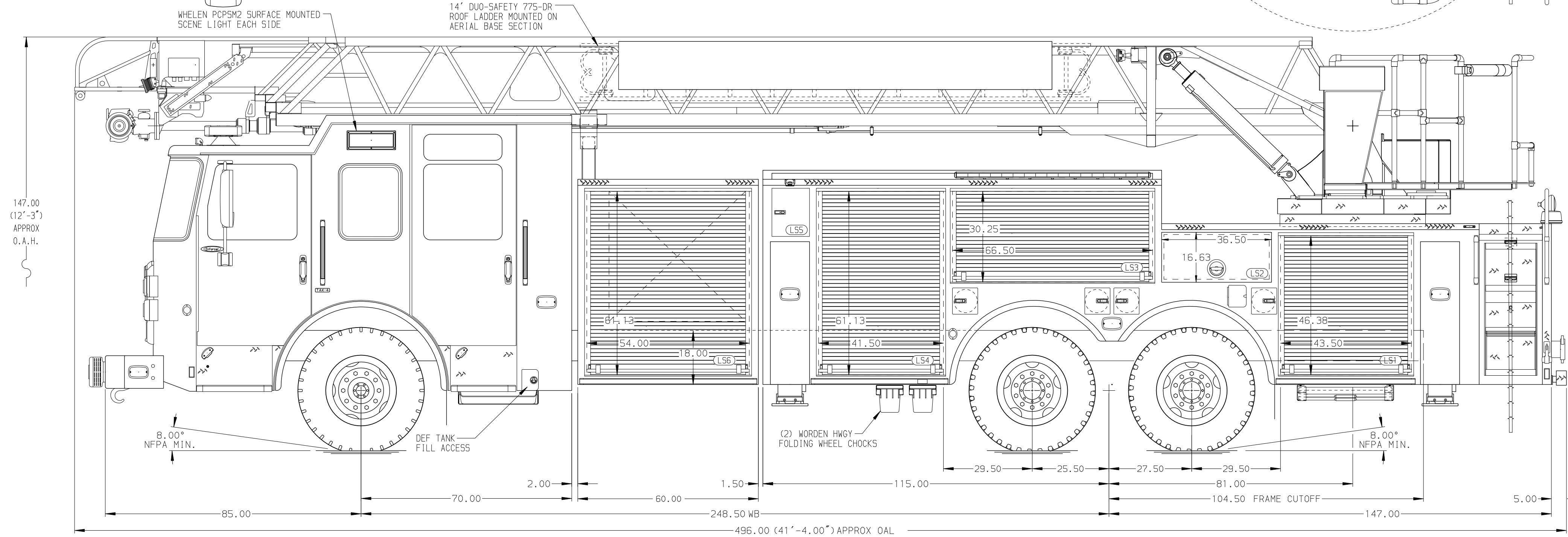


BODY
 107' ASL Tandem Axle Aluminum Body
 COMPT, LEFT SIDE FRONT
 FH/FD RollUp Forward w/o Chute
 COMPT, LEFT SIDE REAR
 FH/FD RollUp and Lift-up Rearward
 COMPT, RIGHT SIDE FRONT
 FH/FD RollUp Forward w/o Chute
 COMPT, RIGHT SIDE REAR
 FH/FD RollUp Rearward

EQUIPMENT STORED AT THE REAR
 (1) 35' 2-SEC 1200
 (1) 28' 2-SEC 1200
 (1) 24' 2-SEC 900
 (1) 20' ROOF 075
 (1) 16' ROOF 075
 (1) 14' 2-SEC 701
 (1) 10' FOLDING 585
 (6) PIKE POLES



CHASSIS Enforcer Chassis ENGINE 510 HP Paccor MX13 Engine	CAB 7010 Notched Enforcer Cab BUMPER 16" Extended Painted Steel	AXLE, FRONT, CUSTOM 22,800 Lb TAK-4 Axle AXLE, REAR 44,000 Lb Meritor Axle	TRANSMISSION Allison 6th Gen, 4500 EVS P GENERATOR Generator Not Required	COMPARTMENT-NO PUMP 60" Wide w/RollUp Door	SAFETY Side Roll and Frontal Impact Protection	Pierce MANUFACTURING INC.	JOB NO. PRELIM						
NOTE DIMENSIONS SHOWN ARE APPROXIMATE AND ARE SUBJECT TO MINOR DEVIATIONS AS MAY OCCUR OR BE NECESSARY IN CONSTRUCTION. MINOR DETAILS NOT SHOWN.	1. 14" LIMITED RETRACTION REQUIRED 2. SHORELINE RECEPTACLE WITH KUSSMAUL SUPER AUTO-EJECT LOCATED ON DRIVER SIDE OF THE CAB 3. AIR INLET WITH DISCONNECT COUPLING IN THE DRIVER SIDE STEPWELL 4. BATTERY CHARGER LOCATED PER ORDER 5. BATTERY CHARGE INDICATOR LOCATED ON THE DRIVER SIDE SEAT RISER 6. FIVE ADJUSTABLE SHELVES LOCATED PER ORDER 7. FOUR FLOOR MOUNTED SLIDE-OUT TRAYS LOCATED PER ORDER 8. 3.00" RAISED AERIAL PEDESTAL 9. LIFTING EYE ROPE RESCUE ATTACHMENT AT AERIAL TIP 10. 1500 GPM HIGH FLOW WATERWAY	11. TWO ADJ SLIDE-OUT TRAYS PER ORDER 12. ONE TILT/SLIDE-OUT TRAY PER ORDER 13. ONE SLIDE-OUT ONE-WAY (3/4 TRANS) TRAY PER ORDER 14. ONE TOOLBOARD ADDED TO SLIDE-OUT TRAY PER ORDER 15. ONE TOOLBOARD TRAY PER ORDER 16. TWO SWING-OUT TOOLBOARDS PER ORDER 17. ONE VERTICAL PARTITION PER ORDER 18. TWO PERGOARDS ON BACK WALLS PER ORDER 19. STORAGE RACK FOR (9) AIR BAGS PER ORDER 20. ONE FLOOR EXTENTION PER ORDER	21. STORAGE BIN FOR (8) AIR BOTTLES PER ORDER 22. LITTLE GIANT LADDER REVOLUTION MODEL 17 PER ORDER 23. TWO 120V RECEPTABLES PER ORDER 24. RUNG LIGHTING ON AERIAL LADDER PER ORDER 25. TWO PIKE POLE TUBES IN COMPARTMENT PRE ORDER	15 JUN 23	LWE	THS	CHASSIS DATA	TITLE	107' ASCENDANT AERIAL LADDER AND BODY ASSEMBLY NO PUMP, NO TANK	SCALE	1:24	DATE	30MAR23
REV	DATE	BY	CH	ENFORCER	MAKE	PIERCE	FOR	IRVING FIRE DEPARTMENT IRVING, TX	CHECKED BY	THS	SHEET SIZE	SHEET NO.	31MAR23
					MODEL		DWG NO.	40583AD			D	1 OF 1	