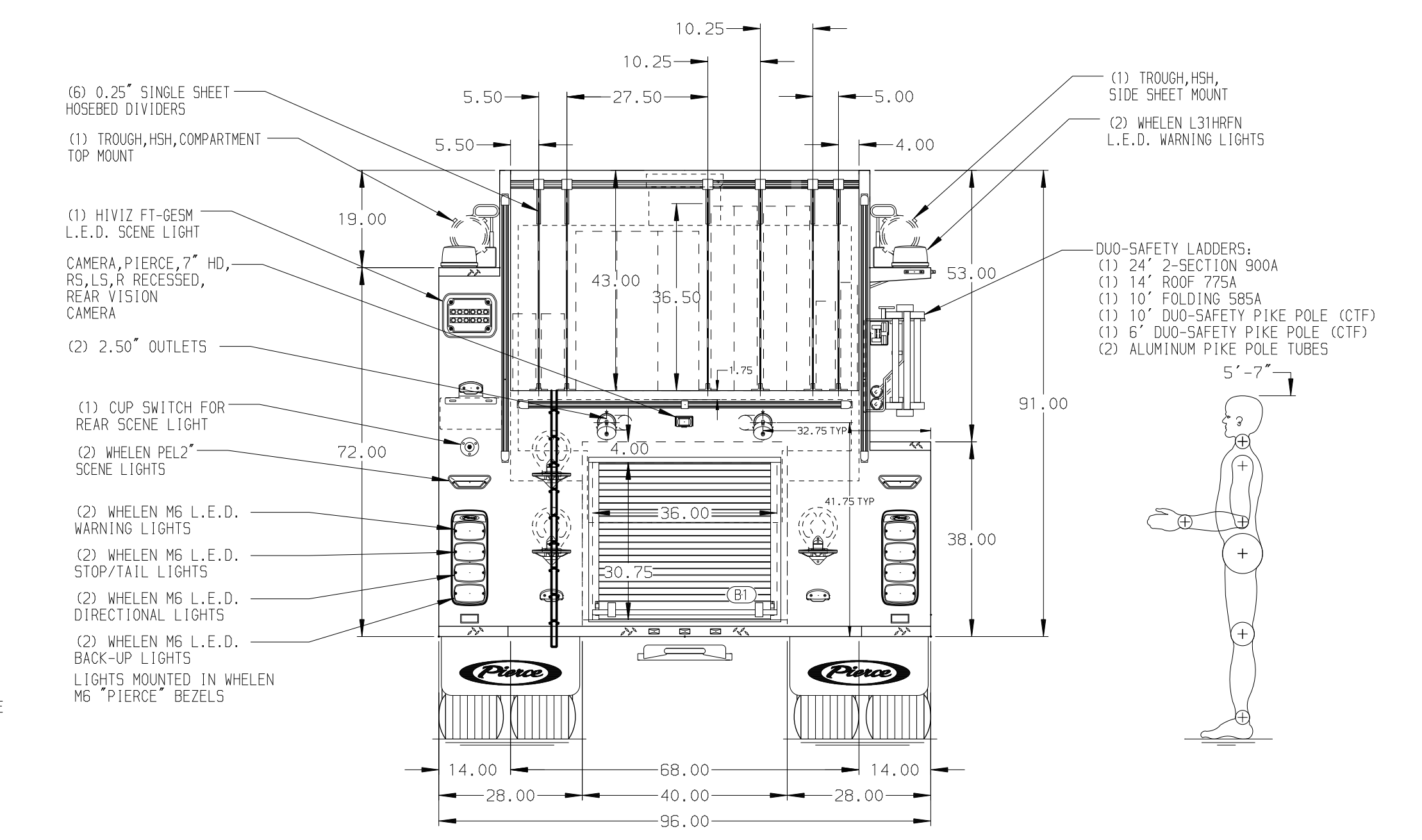
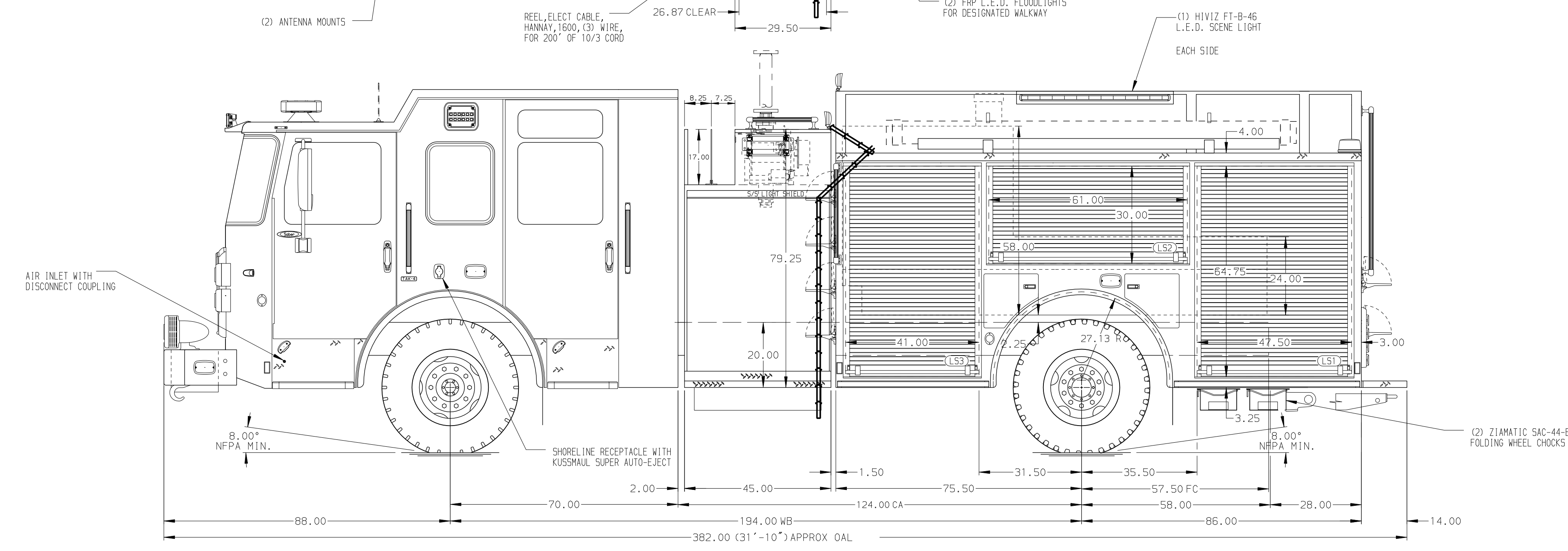


HOSEBED CAPACITIES

1	150' OF 2.50" D.J. HOSE
2	150' OF 2.50" D.J. HOSE
3	1000' OF 5.00" D.J. HOSE
4	750' OF 2.50" D.J. HOSE
5	750' OF 2.50" D.J. HOSE
6	200' OF 2.00" D.J. HOSE
7	250' OF 1.75" D.J. HOSE



ALUMINUM BODY

SIDE ROLL AND FRONTAL IMPACT PROTECTION

NOTE
DIMENSIONS SHOWN ARE APPROXIMATE AND ARE SUBJECT TO MINOR DEVIATIONS AS MAY OCCUR OR BE NECESSARY IN CONSTRUCTION. MINOR DETAILS NOT SHOWN.

REV	DATE	BY	CH	SABER FR
11OCT23	RWR	CGA		
20JUN23	RWR	JAP		
21APR23	LME	EGO		

		JOB NO.	40673
TITLE		SCALE	DATE
1500-D-1000P, 161" PUMPER BODY, FDLER		1:24	
(2) CROSSLAYS, ADJUSTABLE LADDER BRACKETS RS		DRAWN BY	08APR23
FOR		LME	
MECHANICVILLE FIRE DEPARTMENT		CHECKED BY	13APR23
MECHANICVILLE, NEW YORK		CZA	
DWG NO.		SHEET SIZE	SHEET NO.
40673AD		D	1 OF 1