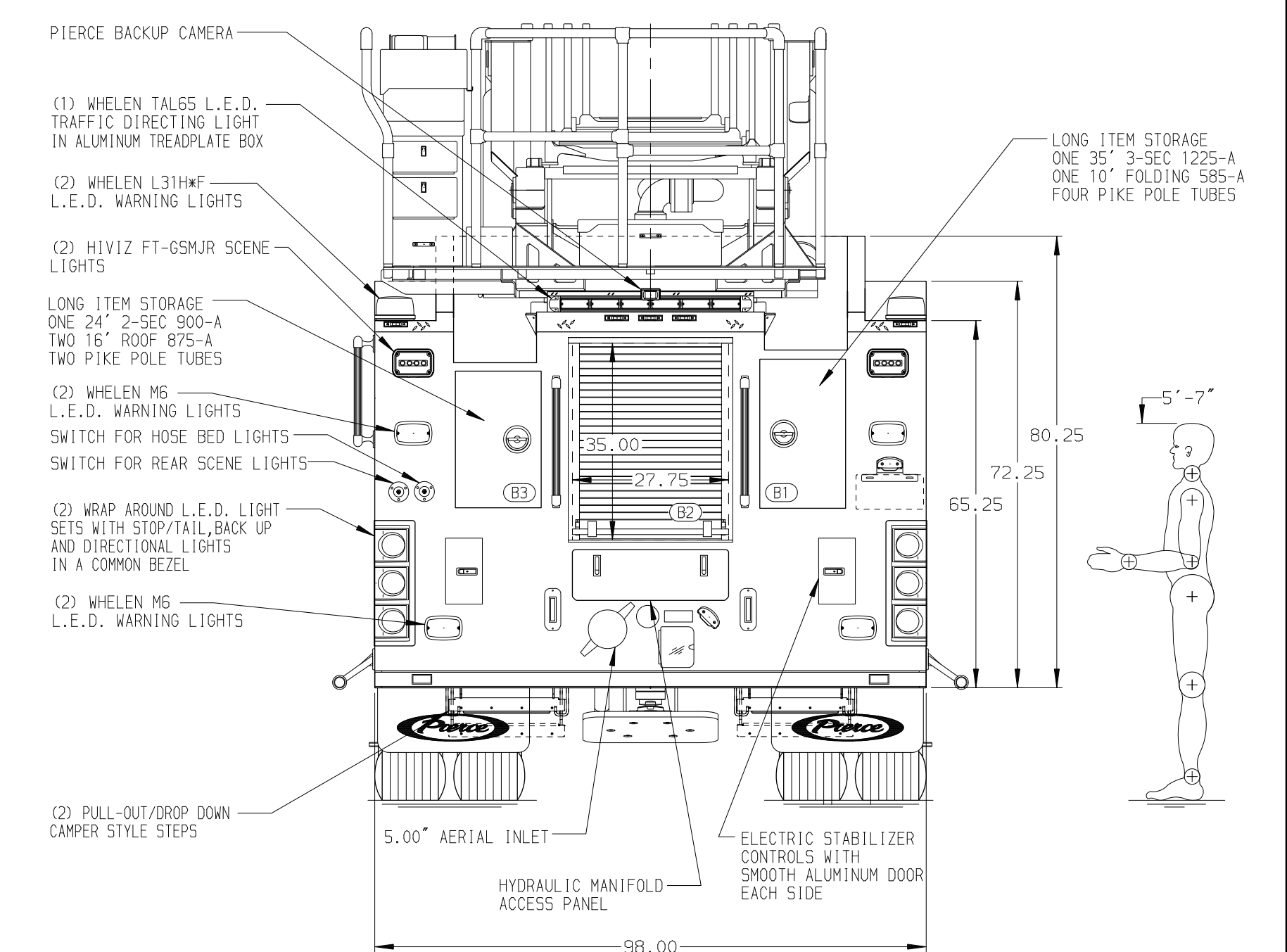
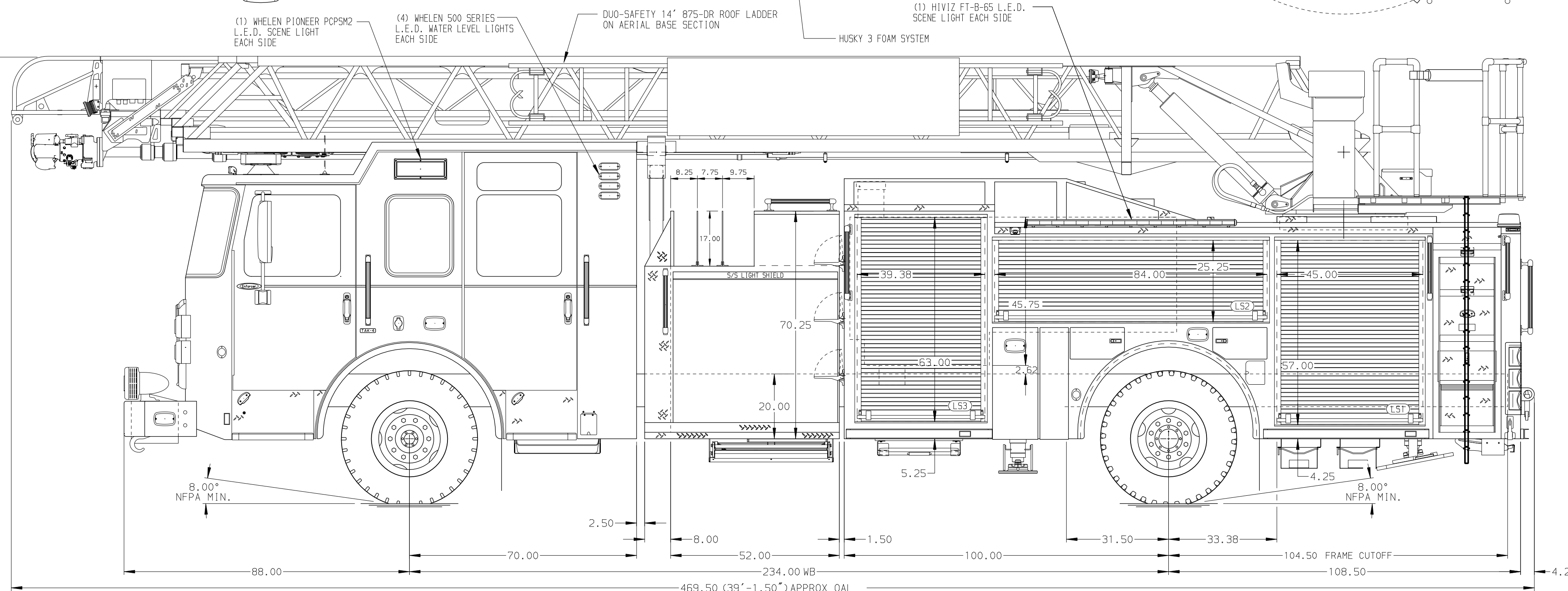


BODY	WATER TANK
107' ASL Aluminum Body	500 Gallon Poly Water Tank
COMPT, LEFT SIDE FRONT	Foam System
Full Height RollUp Forward	Husky 3 Single Agent Foam System
COMPT, LEFT SIDE REAR	Foam Cell
Full Height RollUp Rearward	20 Gallon Foam Cell, Non Reduced Water
COMPT, RIGHT SIDE FRONT	
Full Height RollUp Forward	
COMPT, RIGHT SIDE REAR	
Full Height RollUp Rearward	



CHASSIS	CAB	AXLE, FRONT, CUSTOM	TRANSMISSION	PUMPHOUSE	CROSSLAYS, 1.50"	SPEEDLAYS	SAFETY	CUSTOMER APPROVAL	Pierce MANUFACTURING INC.		JOB NO.
Enforcer Chassis ENGINE 510 HP Paccor MX13 Engine	7010 Enforcer Notched Cab BUMPER 19" Extended Painted Steel	22,800 Lb TAK-4 Axle AXLE, REAR 33,500 Lb Meritor Axle	Allison 6th Gen, 4000 EV5 P	52" Control Zone Side Mount PUMP 2000 GPM Waterous CSU	(2) 1.50" Standard Capacity CROSSLAYS, 2.50" (1) 2.50" Standard Capacity	Speedlays Not Required GENERATOR Generator Not Required	Side Roll and Frontal Impact Protection	APPROVED BY: _____ DATE: _____			40720
NOTE DIMENSIONS SHOWN ARE APPROXIMATE AND ARE SUBJECT TO MINOR DEVIATIONS AS MAY OCCUR OR BE NECESSARY IN CONSTRUCTION. MINOR DETAILS NOT SHOWN.											
1. SHORELINE RECEPTACLE WITH KUSSMAUL SUPER AUTO-EJECT LOCATED ON DRIVER SIDE OF THE CAB 2. AIR INLET WITH DISCONNECT COUPLING FORWARD IN THE DRIVER SIDE STEPPLE 3. BATTERY CHARGER LOCATED BEHIND DRIVERS SEAT 4. TECNO RING LIGHTING ON AERIAL DEVICE 5. DUAL L.E.D. LIGHT STRIPS LOCATED IN COMPARTMENTS PER ORDER 6. SIX ADJUSTABLE SHELVES LOCATED IN COMPARTMENTS PER ORDER 7. THREE FLOOR MOUNTED SLIDE-OUT TRAYS LOCATED IN COMPARTMENTS PER ORDER 8. ONE CTECH CABINET LOCATED IN COMPARTMENT PER ORDER 9. ONE RECEPTACLE LOCATED IN COMPARTMENT PER ORDER 10. NON-RAISED AERIAL PEDESTAL			11. 1500 GPM HIGH FLOW WATERWAY 12. LIMITED RETRACTION NOT REQUIRED 13. MOUNTING PROVISIONS FOR FRONT INLET								
TITLE MAKE FOR MODEL ENFORCER		107' ASCENDANT AERIAL LADDER AND BODY ASSEMBLY 520 GALLON TANK, 500 WATER/20 FOAM EL PASO COUNTY ESD #2 FABENS, TX		DRAWN BY ANZ 01JUN23		CHECKED BY THS 01JUN23		SHEET SIZE D SHEET NO. 1 OF 1		DWG NO. 40720AD	