

**PUMPER  
BODY**

Long Aluminum 2nd Gen Pumper

**CHASSIS**  
Enforcer Chassis

**CHASSIS  
AXLE, FRONT, CUSTOM**  
22,800 Lb Oshkosh Tak-4 Axle

**AXLE, REAR**  
27,000 Lb Meritor Axle

**ENGINE**  
510 HP PACCAR MX13 Engine

**TRANSMISSION**  
Allison 6th Gen, 4000 EVS P

**BUMPER**  
19" Extended Painted Steel

**CAB**  
7010 Enforcer Cab

**BODY  
WATER TANK**

1000 Gallon New York Style Water Tank

**COMPT, PUMPER, REAR**  
22.50" FF RollUp Rear Compt

**COMPT, PUMPER, LEFT SIDE**  
171" RollUp Full Height & Depth Front & Rear

**COMPT, PUMPER, RIGHT SIDE**  
171" RollUp Full Height & Depth Front & Rear

**FIRE SUPPRESSION  
PUMPHOUSE**

52" Control Zone Side Mount

**PUMP**

1500 GPM Waterous CSU

**CROSSLAYS, 1.50"**  
(2) 1.50" Standard Capacity

**CROSSLAYS, 2.50"**  
(1) 2.50" Standard Capacity

**SPEEDLAYS**  
Speedlays Not Required

**GENERATOR**  
Generator Not Required

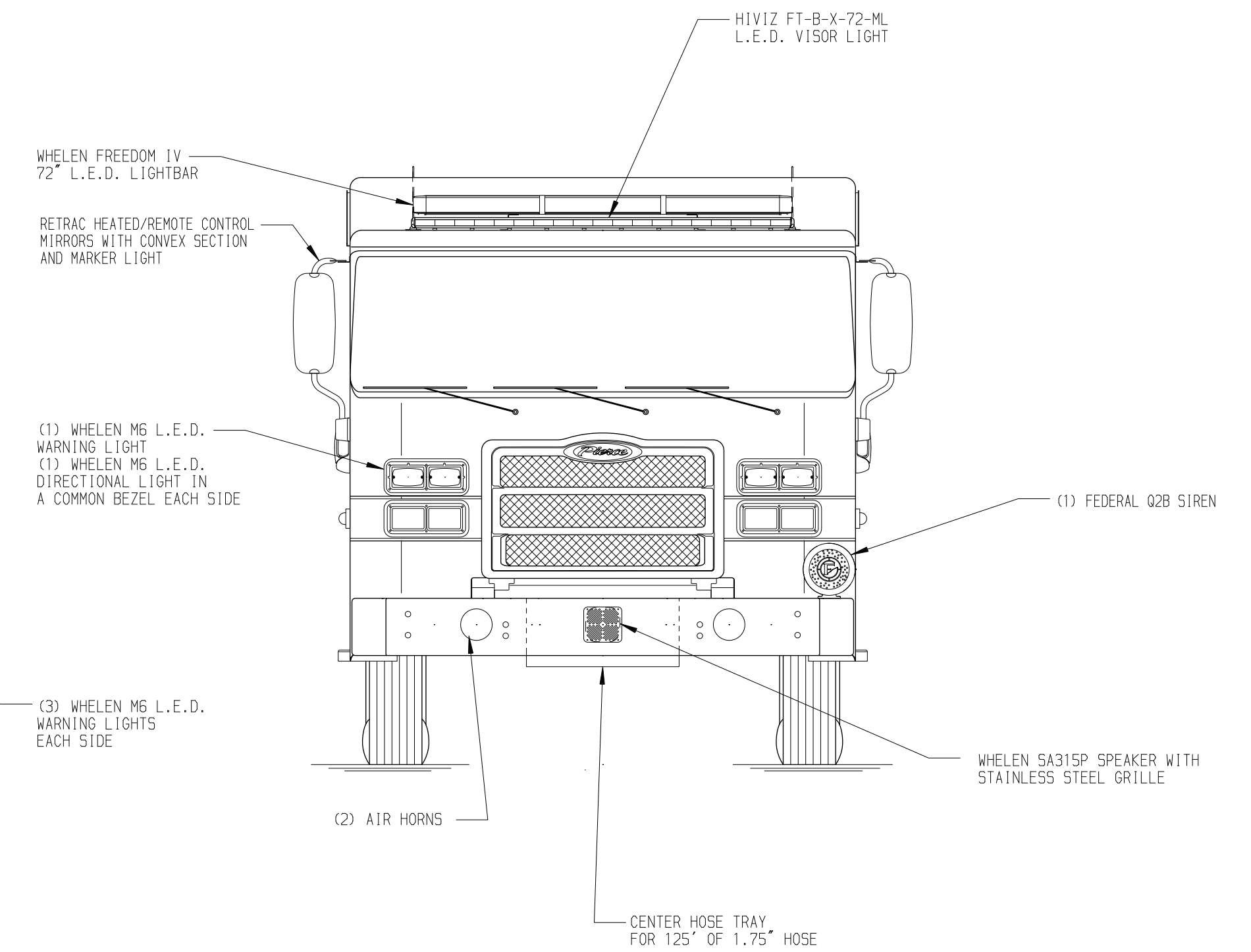
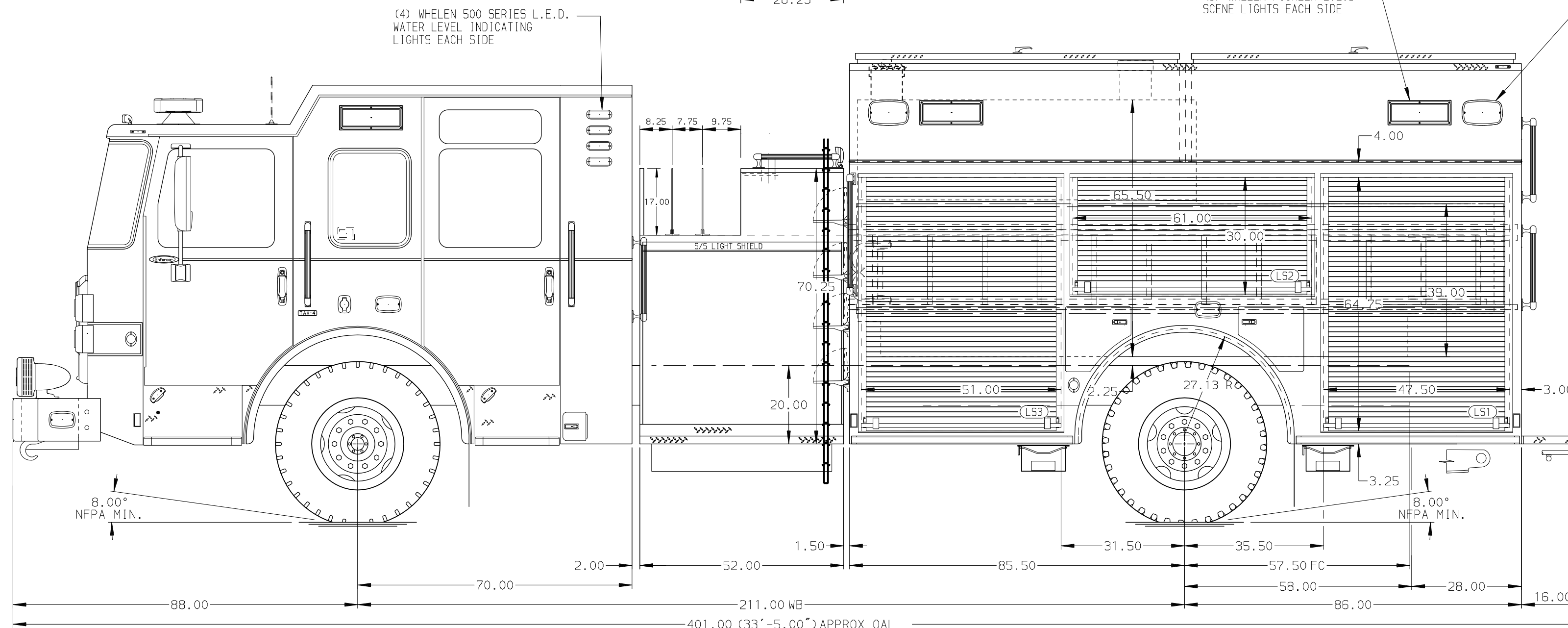
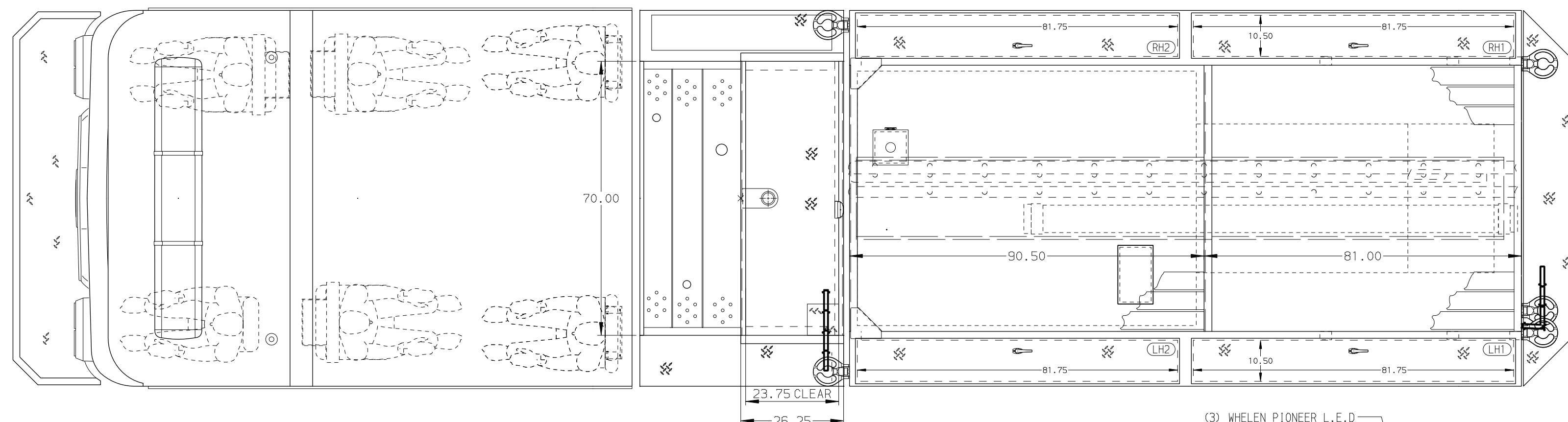
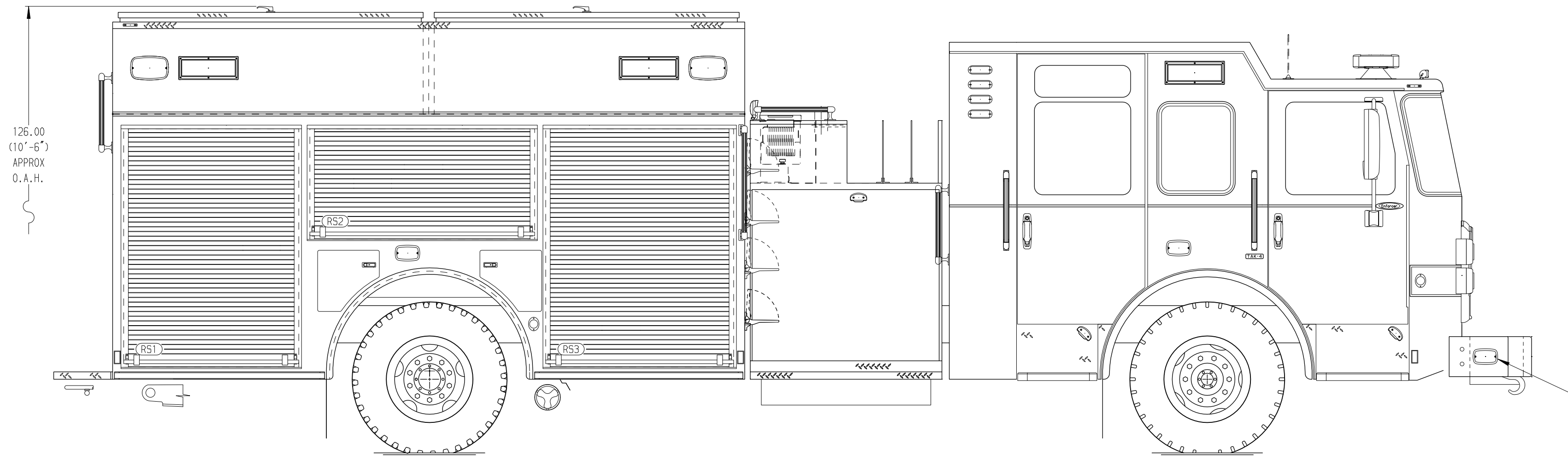
**Foam System**  
Not Required

**Foam Cell**  
20 Gallon Foam Cell, Not Reduced Water

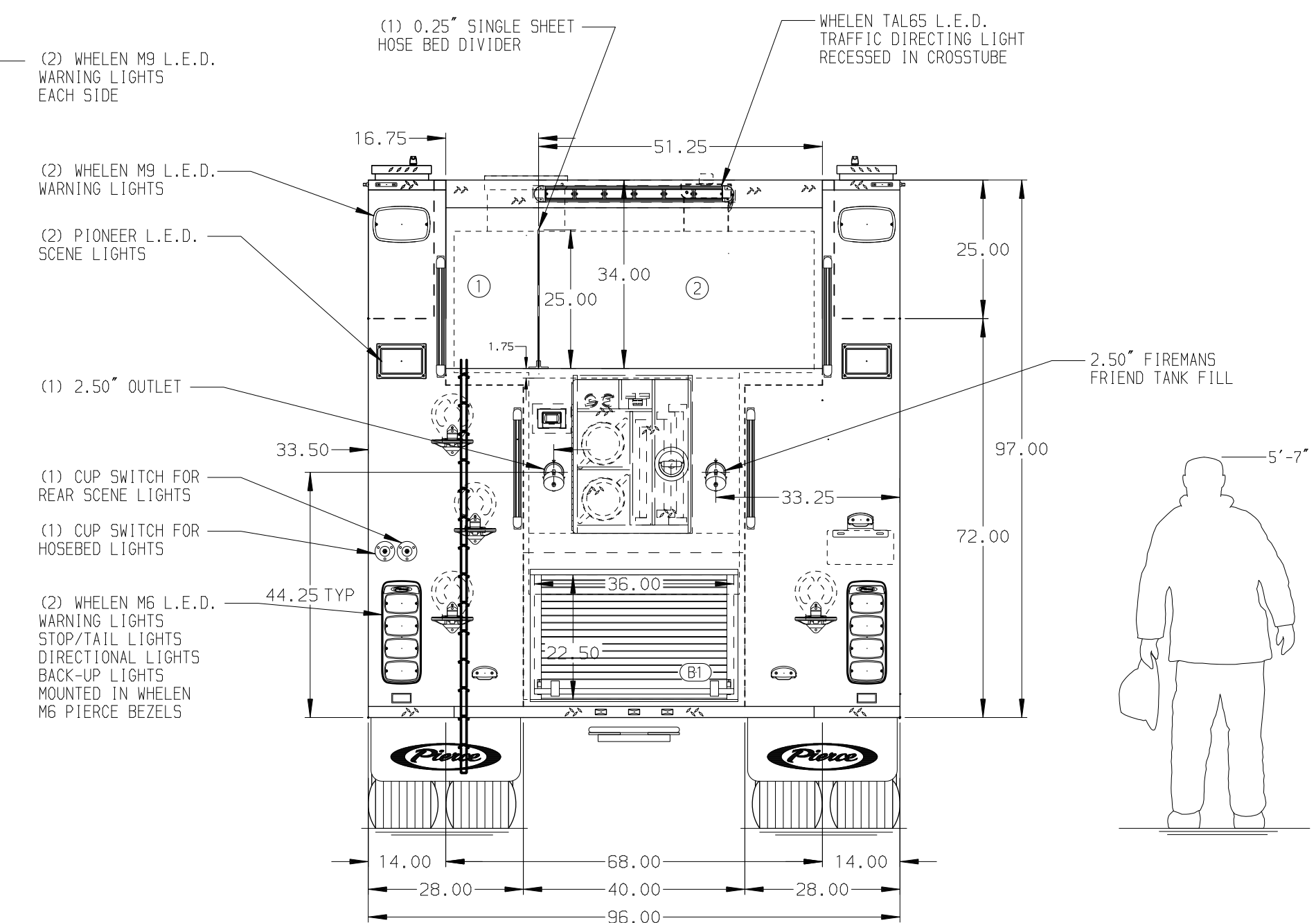
Side Roll and Frontal Impact Protection

**NOTE**  
DIMENSIONS SHOWN ARE APPROXIMATE AND ARE SUBJECT TO MINOR DEVIATIONS AS MAY OCCUR OR BE NECESSARY IN CONSTRUCTION. MINOR DETAILS NOT SHOWN.

- ONE 1.50" OUTLET WITH 2.00" PIPING AND SWIVEL LOCATED IN CENTER BUMPER TRAY
- SHORELINE RECEPTACLE WITH KUSSMALL SUPER AUTO-EJECT LOCATED ON DRIVER SIDE OF THE CAB
- AIR INLET WITH DISCONNECT COUPLING IN THE DRIVER SIDE STEPWELL
- BATTERY CHARGER LOCATED IN COMPARTMENT PER SHOP ORDER
- BATTERY CHARGE INDICATOR LOCATED ON THE DRIVER SIDE THROUGH WINDOW
- SIX ADJUSTABLE SHELVES IN COMPARTMENTS PER SHOP ORDER
- FOUR FLOOR MOUNTED SLIDE-OUT TRAY IN COMPARTMENTS PER SHOP ORDER
- PLUMBING FOR FUTURE FOAM SYSTEM



HOSEBED CAPACITY	
<b>BED 1</b>	400' OF 3.00" D.J. POLY HOSE
<b>BED 2</b>	1000' OF 5.00" D.J. POLY HOSE



CUSTOMER APPROVAL			
APPROVED BY:			
DATE:			
REV	DATE	BY	CH
-	-	-	-

Pierce MANUFACTURING INC.		JOB NO.	40733
TITLE	Pierce Pumper Approval Drawing	SCALE	1:24 DATE
FOR	Pierce Field Unit Appleton, Wisconsin	DRAWN BY	WRE 21APR23
DWG NO.	40733AD	CHECKED BY	THS 21APR23
ENFORCER		SHEET SIZE	D SHEET NO. 1 OF 1