

PUMPER BODY

Medium Aluminum 2nd Gen Pumper

CHASSIS

Sober FR Chassis

CHASSIS AXLE, FRONT, CUSTOM

18,000 Lb Dana Axle

AXLE, REAR

27,000 Lb Dana Axle

ENGINE

450 HP Cummins L9 Engine

TRANSMISSION

Allison 6th Gen, 3000 EVS P

BUMPER

19" Extended Painted Steel

CAB

6010 Sober FR Cab

BODY WATER TANK

750 Gallon Poly Water Tank

COMPT, PUMPER, REAR

37.75" FF Lap Rear Compt

COMPT, PUMPER, DRIVER SIDE

152" Lap Full Height Front & Rear FOLER

COMPT, PUMPER PASS. SIDE

152" Lap Full Height Front & Rear FOLER

FIRE SUPPRESSION PUMPHOUSE

45" Control Zone Side Mount

PUMP

1250 GPM Waterous CS

CROSSLAYS, 1.50"

(2) 1.50" Standard Capacity

CROSSLAYS, 2.50"

2.50" Crosslay Not Required

SPEEDLAYS

Speedlays Not Required

GENERATOR

Generator Not Required

Foam System

Foam System Not Required

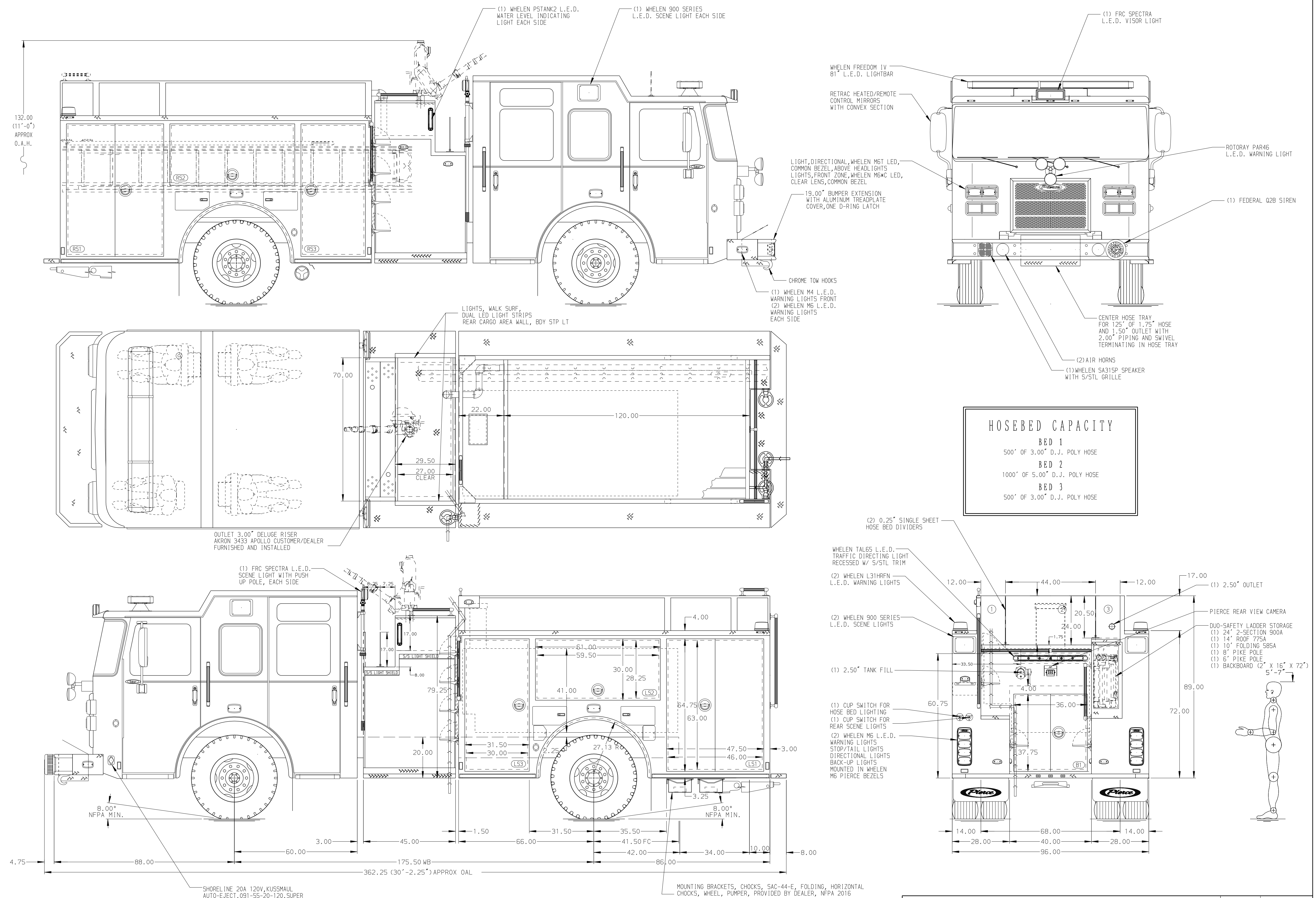
Foam Cell

Foam Cell Not Required

Side Roll and Frontal Impact Protection

NOTE

DIMENSIONS SHOWN ARE APPROXIMATE AND ARE SUBJECT TO MINOR DEVIATIONS AS MAY OCCUR OR BE NECESSARY IN CONSTRUCTION. MINOR DETAILS NOT SHOWN.



HOSEBED CAPACITY	
BED 1	500' OF 3.00" D.J. POLY HOSE
BED 2	1000' OF 5.00" D.J. POLY HOSE
BED 3	500' OF 3.00" D.J. POLY HOSE

		JOB NO.	40748
		SCALE	DATE
TITLE	Pierce Pumper Approval Packet	DRAWN BY	WRE
FOR	Moody Fire Department	CHECKED BY	MMF
DWG NO.	40748AD	SHEET SIZE	SHEET NO.
REV	NO.	D	1 OF 1

REV	DATE	BY	CH	DESCRIPTION
1	11DEC23	RWR	NAS	PIERCE
2	15AUG23	WHO	NAS	MODEL
3				SABER FR