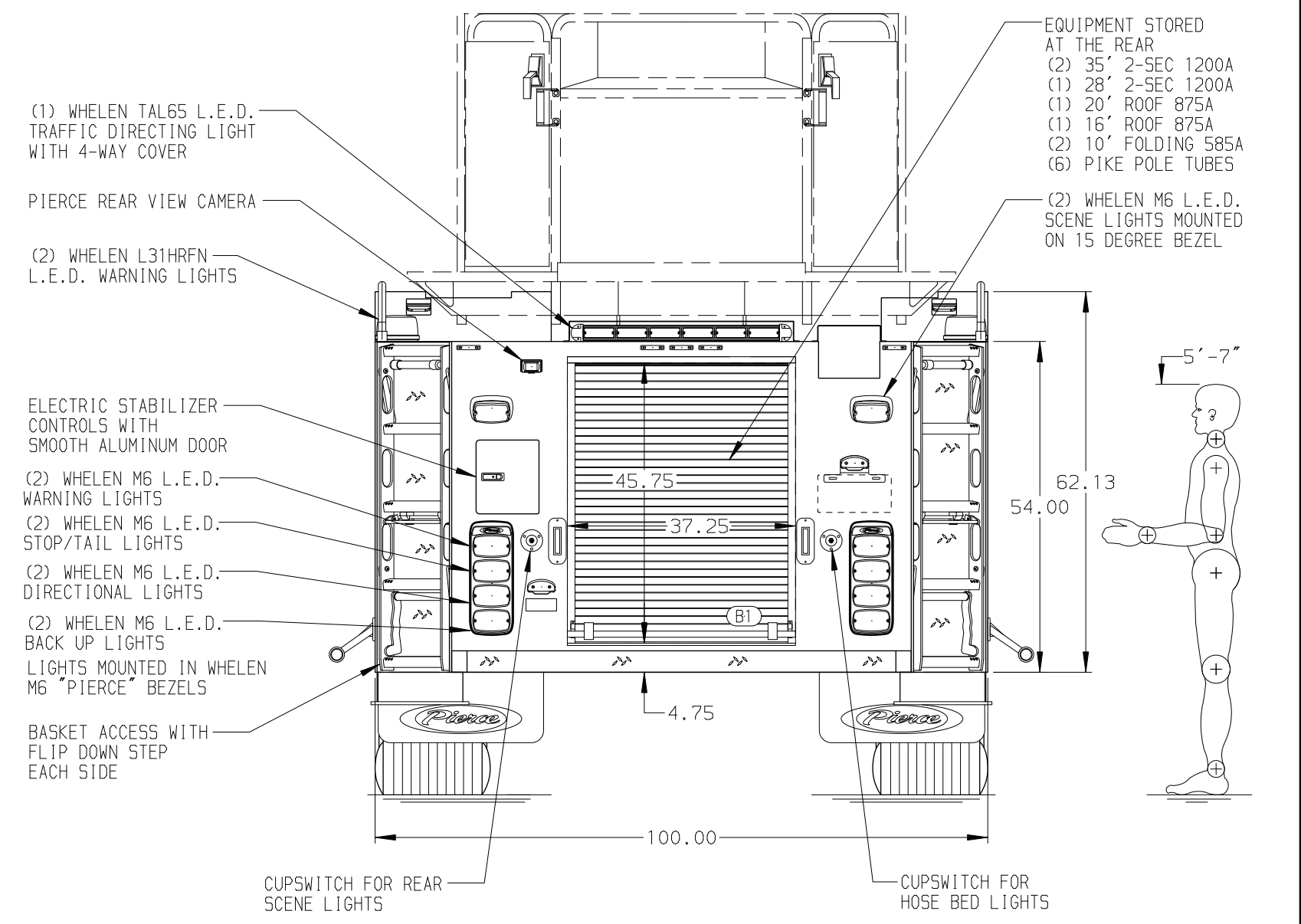
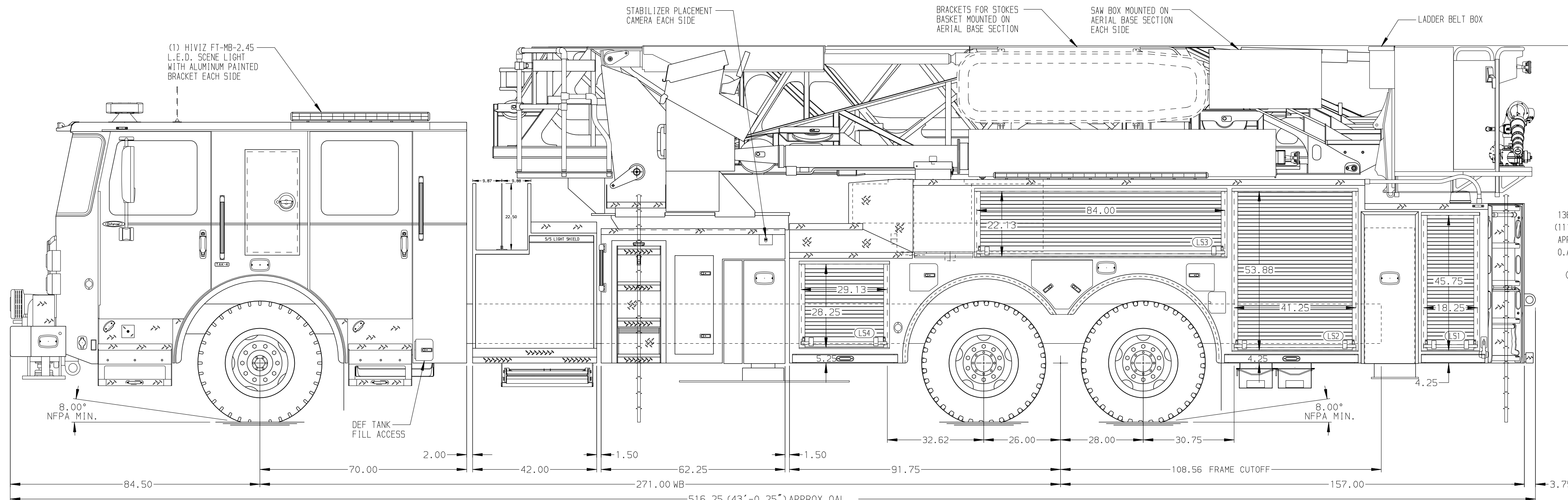


| | |
|---|---|
| BODY 100' Ascendant Aerial Tower Alum Body COMPT, DRIVER SIDE Full Height RollUp Doors COMPT, PASSENGER SIDE Full Height RollUp Doors | WATER TANK 280 Gallon Poly Water Tank Foam System Husky 3 Single Agent Foam System Foam Cell 20 Gallon Foam Cell, Reduced Water |
|---|---|



| | | | | | | | | | | |
|--|--|--|--|---|--|--|---|---|---------------------------|--|
| CHASSIS Enforcer Chassis 510 HP Paccor MX13 Engine | CAB 7000 Enforcer Cab BUMPER 15" Extended Painted Aluminum | AXLE, FRONT, CUSTOM 24,000 Lb TAK-4 Axle AXLE, REAR 52,640 Lb TAK-4 T3 Axle | TRANSMISSION Allison 6th Gen, 4500 EV5 P | PUMPHOUSE 42" Control Zone Side Mount PUMP 2000 GPM Waterous S100 | CROSSLAYS, 1.50" (2) 1.50", 200' of 1.75" Hose CROSSLAYS, 2.50" 2.50" Crosslay Not Required | SPEEDLAYS Speedlays Not Required GENERATOR Generator Not Required | SAFETY Side Roll and Frontal Impact Protection | CUSTOMER APPROVAL APPROVED BY: _____ DATE: _____ | MANUFACTURING INC. | JOB NO. 41043 |
| NOTE DIMENSIONS SHOWN ARE APPROXIMATE AND ARE SUBJECT TO MINOR DEVIATIONS AS MAY OCCUR OR BE NECESSARY IN CONSTRUCTION. MINOR DETAILS NOT SHOWN. | 1. SHORELINE RECEPTACLE WITH KUSSMAUL SUPER AUTO-EJECT LOCATED ON DRIVER SIDE CORNER CAB 2. AIR INLET WITH DISCONNECT COUPLING RECESSED IN TREADPLATE BOX IN THE DRIVER SIDE STEPWELL 3. BATTERY CHARGER LOCATED BEHIND DRIVERS SEAT 4. BATTERY CHARGER INDICATOR LOCATED ON DRIVER'S SEAT RISER 5. L.E.D. LIGHT STRIPS LOCATED IN HOSEBED PER ORDER 6. SIX ADJUSTABLE SHELVES LOCATED IN COMPARTMENTS PER ORDER 7. FOUR SLIDE-OUT FLOOR MOUNTED TRAYS LOCATED IN COMPARTMENTS PER ORDER 8. NON-RAISED AERIAL PEDESTAL 9. DC POWER TO AERIAL TIP 10. 3-in-1 LYFECOMBO BRACKETS AT AERIAL BASKET | 11. TECNIO RUNG LIGHTING ON AERIAL LADDER 12. ATKINSON 2-WAY INTERCOM 13. TWO WHELEN PSL16K LIGHTS UNDER BASKET CORNER STEPS | 11. TECNIO RUNG LIGHTING ON AERIAL LADDER 12. ATKINSON 2-WAY INTERCOM 13. TWO WHELEN PSL16K LIGHTS UNDER BASKET CORNER STEPS | | | | | CHASSIS DATA MAKE PIERCE MODEL ENFORCER | | TITLE 100' ASCENDANT AERIAL TOWER AND BODY ASSEMBLY FOR PIERCE FIELD UNIT APPLETON, WI DWG NO. 41043AD |