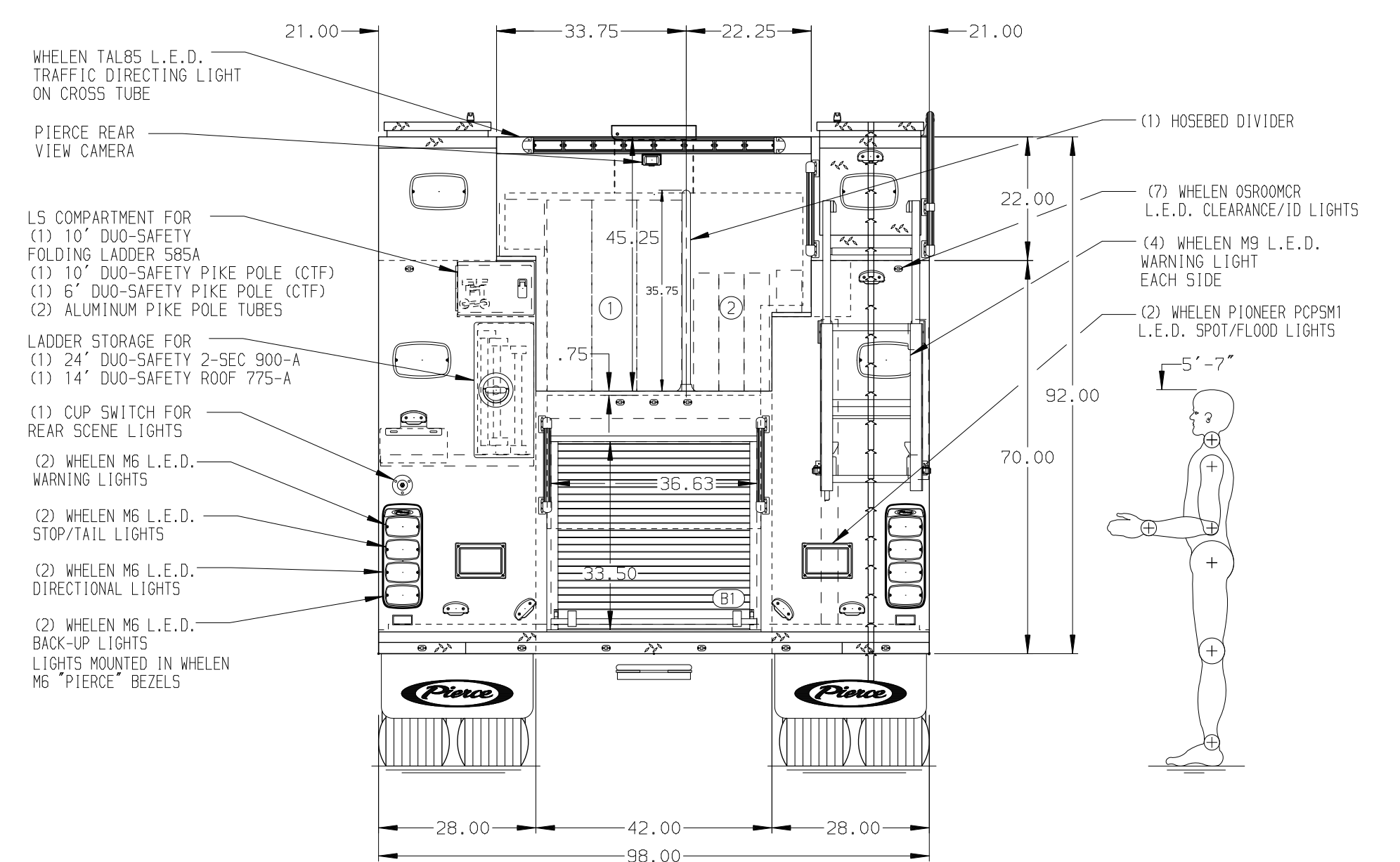
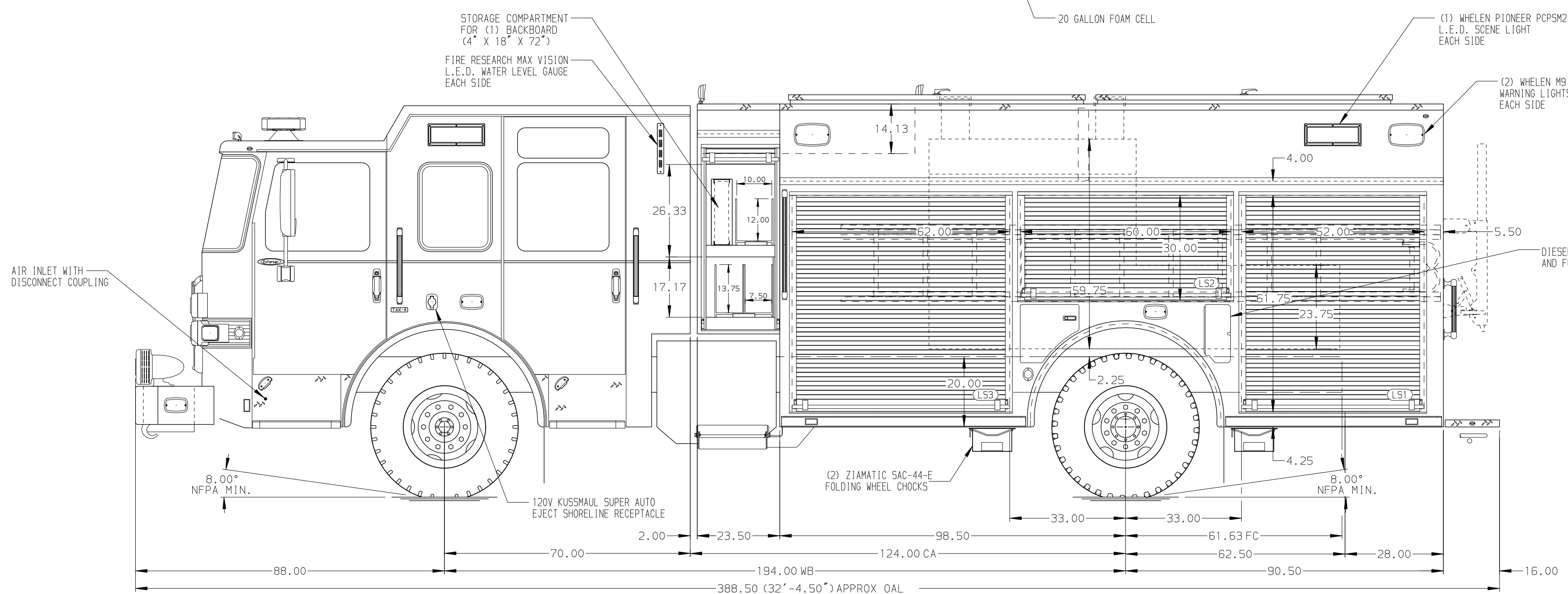


HOSEBED CAPACITIES  
 ① 1000' OF 5.00" D.J. HOSE  
 ② 600' OF 2.50" D.J. HOSE



ALUMINUM BODY

NOTE  
 DIMENSIONS SHOWN ARE APPROXIMATE AND ARE SUBJECT TO MINOR DEVIATIONS AS MAY OCCUR OR BE NECESSARY IN CONSTRUCTION. MINOR DETAILS NOT SHOWN.

- BATTERY CHARGER LOCATED BEHIND THE DRIVER'S SEAT
- BATTERY CHARGER INDICATOR LOCATED ON DRIVER'S SEAT RISER
- DUAL L.E.D. LIGHT STRIPS LOCATED IN HOSE BED
- FOUR FULL WIDTH/DEPTH ADJUSTABLE SHELVES LOCATED PER ORDER
- TWO FLOOR MOUNTED SLIDE-OUT TRAYS WITH SIDE SLIDES LOCATED PER ORDER
- TWO SWING-OUT ALUMINUM TOOL BOARDS LOCATED PER ORDER
- PARTITION BETWEEN L51/B1 AND RS1/B1

CHASSIS DATA	TITLE	2000-D-750P, 730 WATER W/20 FOAM, 189" PUC RESCUE
PIERCE	FOR	PIERCE FIELD UNIT APPLETON, WISCONSIN
MODEL	DWG NO.	41061AD
ENFORCER	REV	DATE BY CH

<b>Pierce MANUFACTURING INC.</b>		JOB NO.	41061
		SCALE	1:24
		DATE	
		DRAWN BY	ARI
		CHECKED BY	CDU
		SHEET SIZE	D
		SHEET NO.	1 OF 1