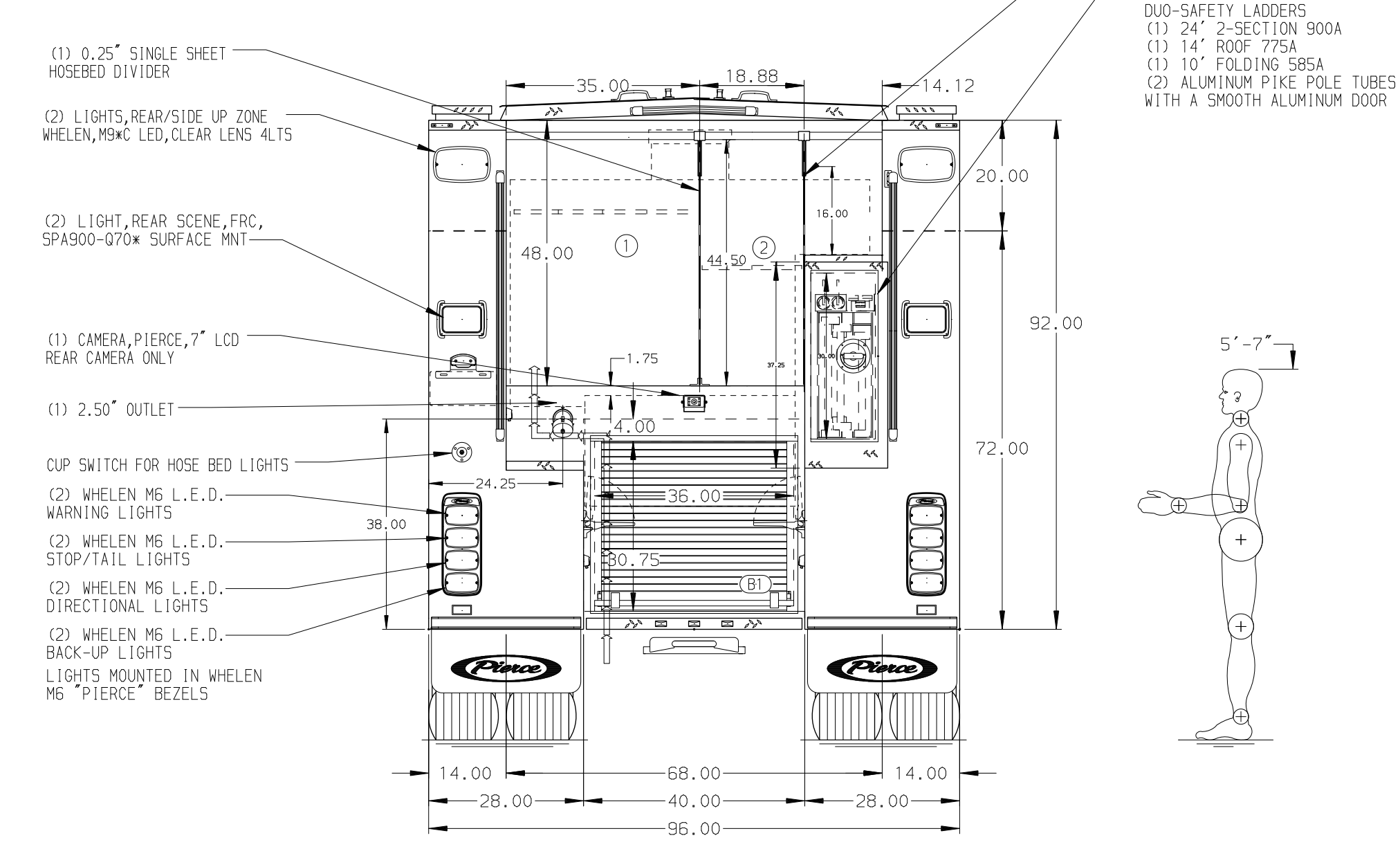
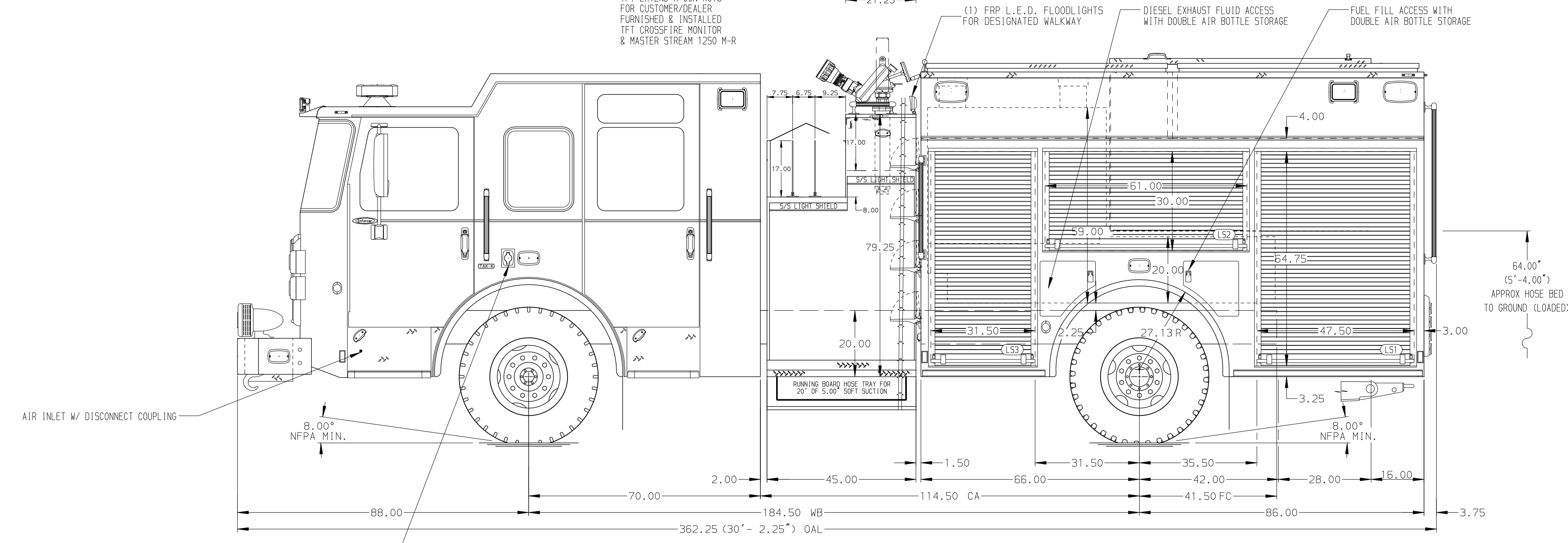


HOSEBED CAPACITIES

① - 1000' OF 5.00" D.J. POLY HOSE

② - 500' OF 2.50" D.J. POLY HOSE



ALUMINUM BODY

NOTE  
DIMENSIONS SHOWN ARE APPROXIMATE AND ARE SUBJECT TO MINOR DEVIATIONS AS MAY OCCUR OR BE NECESSARY IN CONSTRUCTION. MINOR DETAILS NOT SHOWN.

				JOB NO.	41139
				SCALE	DATE
1500-D-750P, 725G WATER, 25G FOAM, 152" FDLER PUMPER LADDERS BTWN TANK & SS, (3) CROSSLAYS, DELUGE				DRAWN BY	RHU
				CHECKED BY	JAP
				CHECKED BY	JAP
REV	DATE	BY	CH	DWG NO.	41139AD
CHASSIS DATA MAKE PIERCE MODEL ENFORCER FLA				TITLE	1500-D-750P, 725G WATER, 25G FOAM, 152" FDLER PUMPER LADDERS BTWN TANK & SS, (3) CROSSLAYS, DELUGE
FOR JACKSON FIRE DEPT JACKSON, MICHIGAN				CHECKED BY	JAP
SHEET NO. 1 OF 1				SHEET SIZE	D