

**PUMPER
BODY**
Long Aluminum 2nd Gen Pumper
CHASSIS
Sober FR Chassis

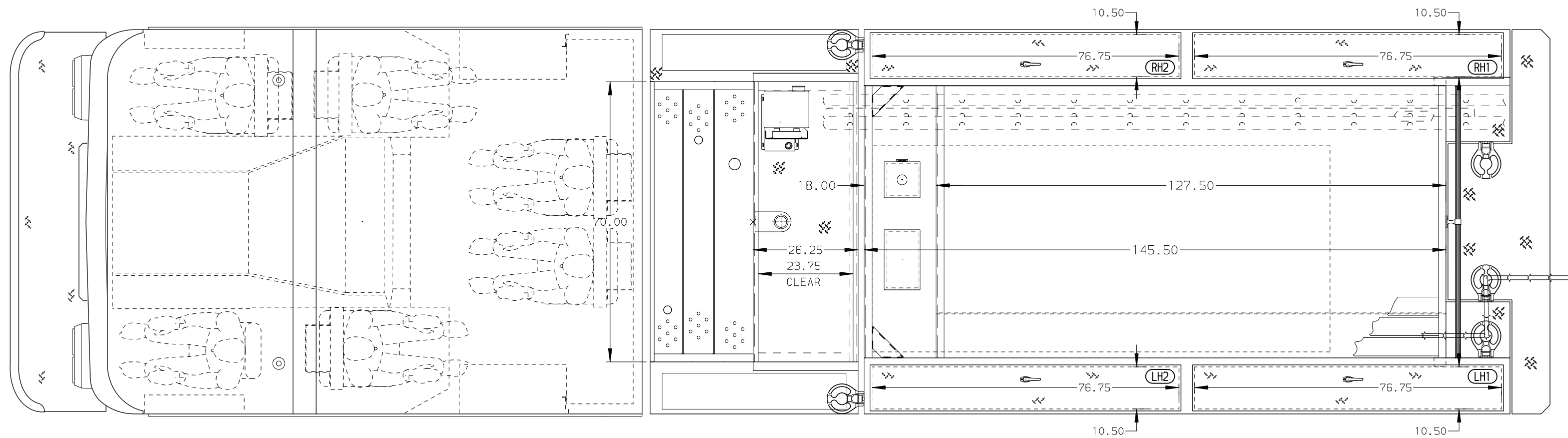
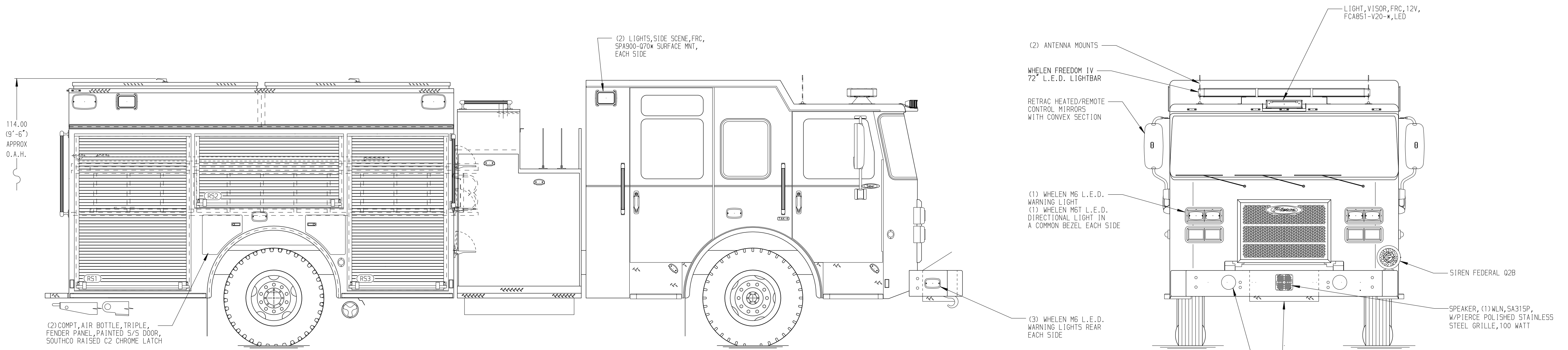
**CHASSIS
AXLE, FRONT, CUSTOM**
TAK-4 19,500 Lbs.
AXLE, REAR
27,000 Lb Meritor Axle
ENGINE
450 HP Cummins L9 Engine
TRANSMISSION
Allison 6th Gen, 3000 EVS P
BUMPER
19" Extended Painted Steel
CAB
7010 Sober FR Cab

**BODY
WATER TANK**
980 Gallon Poly Water Tank
COMPT, PUMPER, REAR
44.50" FF RollUp Rear Compt
COMPT, PUMPER, LEFT SIDE
161" RollUp Full Height Front & Rear FDLR
COMPT, PUMPER, RIGHT SIDE
161" RollUp Full Height Front & Rear FDLR

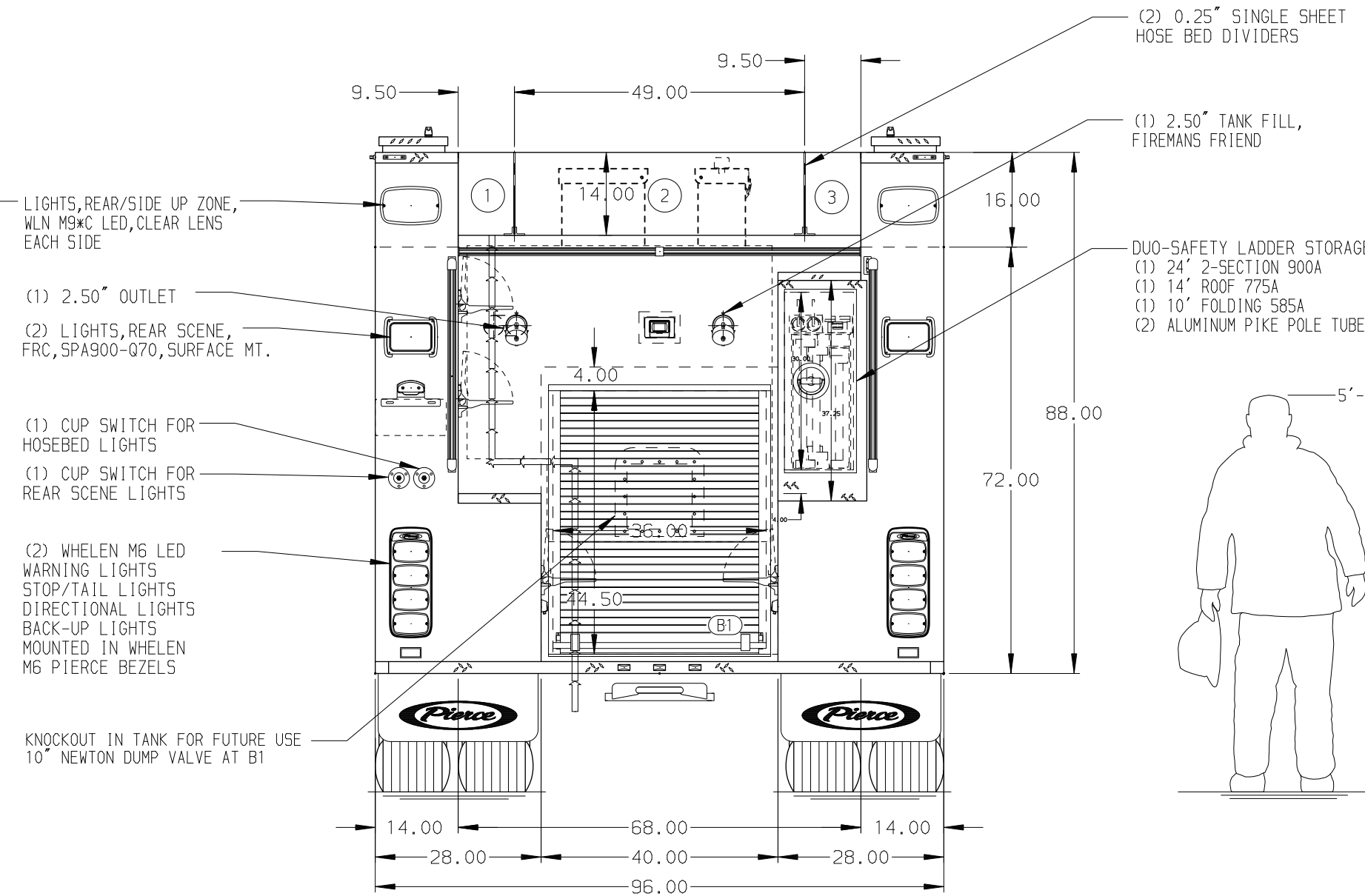
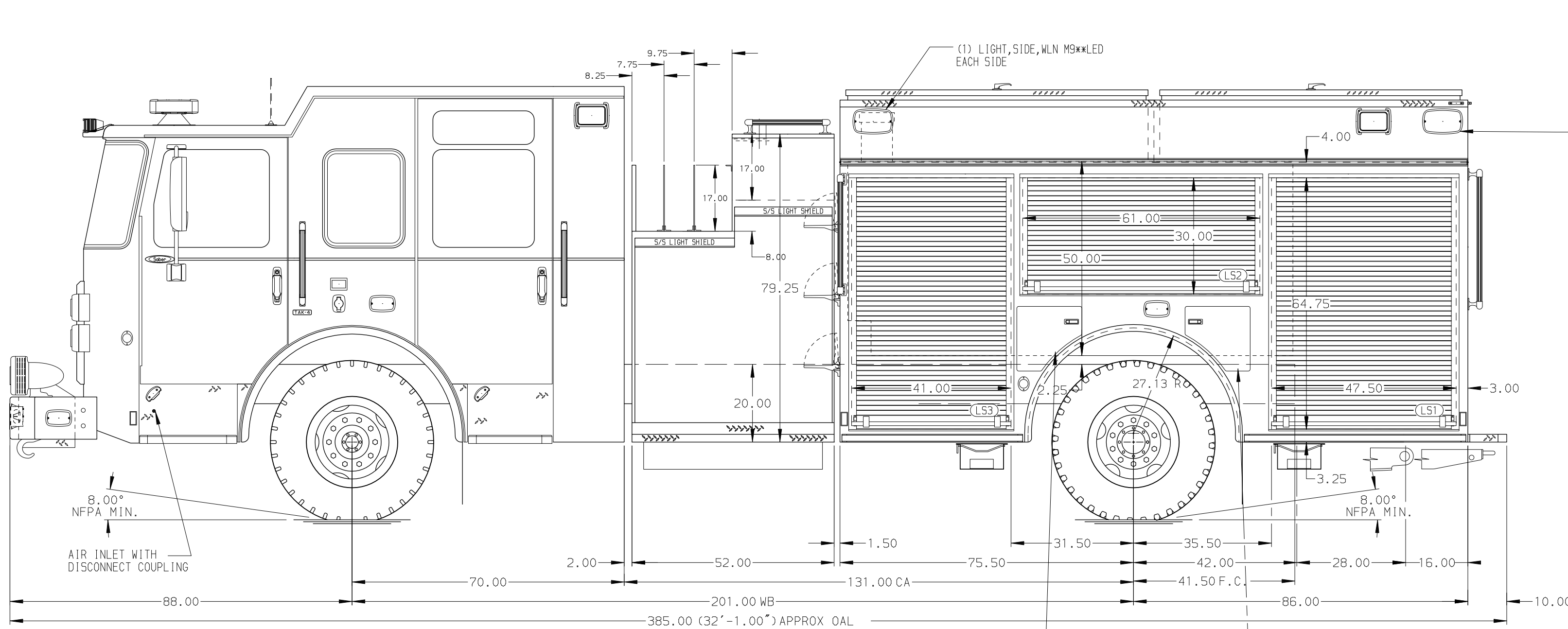
**FIRE SUPPRESSION
PUMPHOUSE**
52" Control Zone Side Mount
PUMP
1500 GPM Waterous CSU
CROSSLAYS, 1.50"
(2) 1.50" Standard Capacity
CROSSLAYS, 2.50"
(1) 2.50" Standard Capacity
SPEEDLAYS
Speedlays Not Required
GENERATOR
Generator Not Required
Foam System
Husky 3, Single Agent
Foam Cell
20 Gallon Foam Cell, Reduced Water

NOTE
DIMENSIONS SHOWN ARE APPROXIMATE AND ARE SUBJECT TO MINOR DEVIATIONS AS MAY OCCUR OR BE NECESSARY IN CONSTRUCTION. MINOR DETAILS NOT SHOWN.

1. ONE 1.50" OUTLET WITH 2.00" PIPING AND SHIVEL LOCATED IN CENTER BUMPER TRAY
2. SHORELINE RECEPTACLE WITH KUSSMAUL SUPER AUTO-EJECT LOCATED ON DRIVER SIDE OF THE CAB
3. AIR INLET WITH DISCONNECT COUPLING IN THE DRIVER SIDE STEPWELL
4. BATTERY CHARGER LOCATED IN COMPARTMENT PER SHOP ORDER
5. BATTERY CHARGE INDICATOR LOCATED ON THE DRIVER SIDE SEAT RISER
6. ADJUSTABLE SHELVES IN COMPARTMENTS PER SHOP ORDER
7. ONE FLOOR MOUNTED SLIDE-OUT TRAY IN COMPARTMENT PER SHOP ORDER
8. MOUNTING PROVISIONS FOR FRONT INLET
9. MOUNTING PROVISIONS FOR WILL BURT NIGH SCAN POWERLITE NS 3.0 10" ON CAB



HOSEBED CAPACITY	
BED 1	300' OF 2.50" D.J. POLY HOSE
BED 2	1000' OF 5.00" D.J. POLY HOSE
BED 3	300' OF 2.50" D.J. POLY HOSE



		JOB NO.	41145
		SCALE	DATE
		DRAWN BY	04AUG23
		CHECKED BY	04AUG23
		SHEET SIZE	SHEET NO.
		D	1 OF 1

REV	DATE	BY	CH	DESCRIPTION

CHASSIS DATA	TITLE	Pierce Pumper Approval Drawing
MAKE	FOR	PIERCE FIELD UNIT
MODEL	DWG NO.	41145AD
SABER FR		