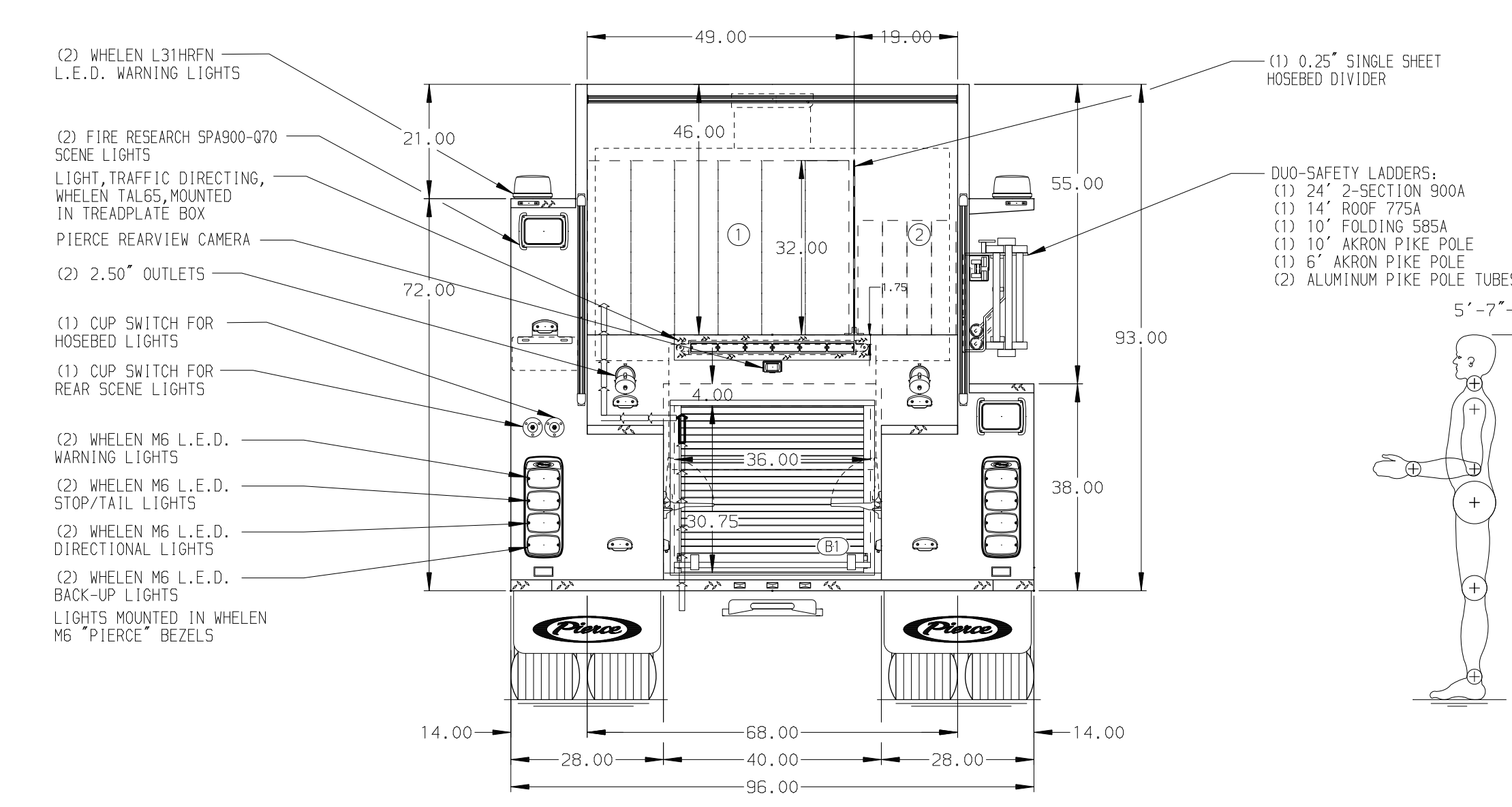
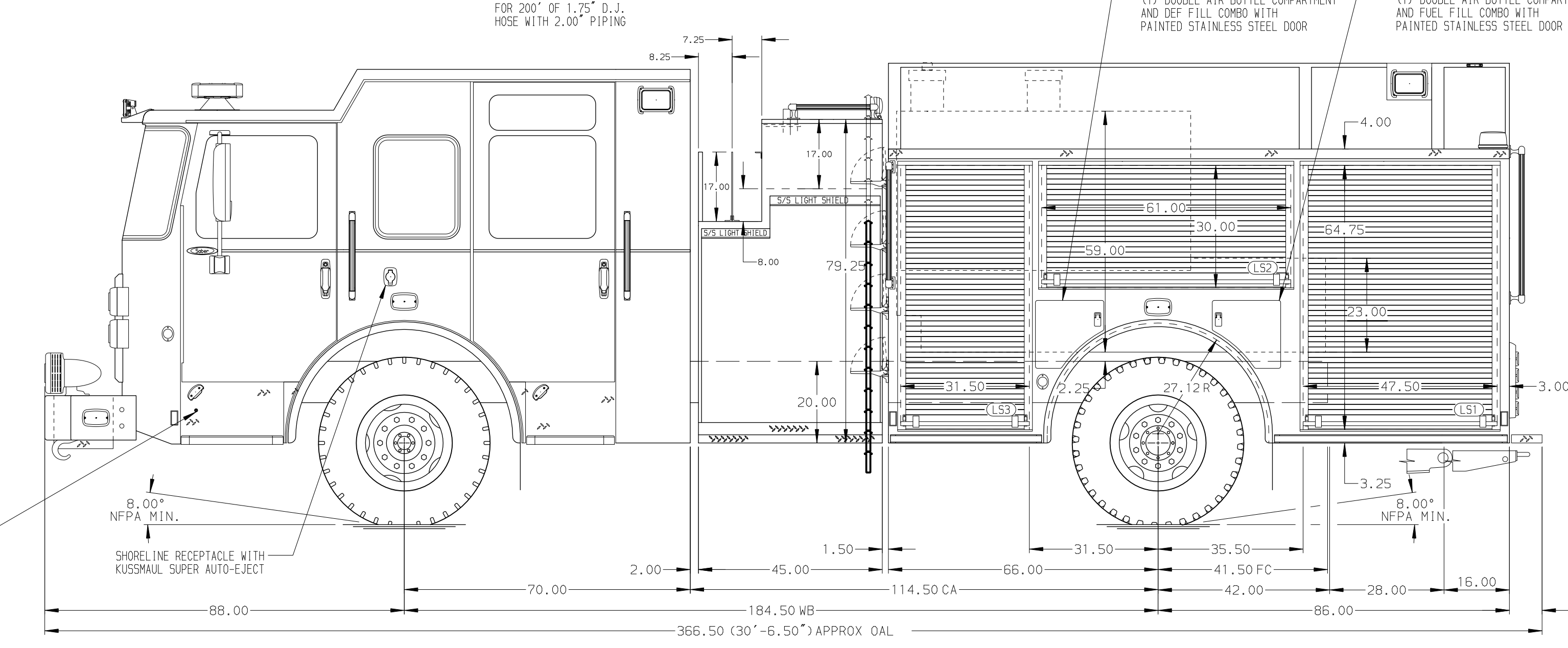


HOSEBED CAPACITIES
 ① 1000' OF 5.00" D.J. POLY HOSE
 ② 500' OF 2.50" D.J. POLY HOSE



ALUMINUM BODY

NOTE
 DIMENSIONS SHOWN ARE APPROXIMATE AND ARE SUBJECT TO MINOR DEVIATIONS AS MAY OCCUR OR BE NECESSARY IN CONSTRUCTION. MINOR DETAILS NOT SHOWN.

- 1. BATTERY CHARGER LOCATED IN COMPARTMENT PER SHOP ORDER
- 2. BATTERY CHARGER INDICATOR LOCATED ON DRIVER'S SEAT RISER
- 3. DUAL L.E.D. LIGHT STRIPS LOCATED IN HOSE BED
- 4. FIVE FULL WIDTH/DEPTH ADJUSTABLE SHELVES IN COMPARTMENTS PER SHOP ORDER
- 5. FOUR FLOOR MOUNTED SLIDE-OUT TRAYS IN COMPARTMENTS PER SHOP ORDER

				Pierce MANUFACTURING INC.		JOB NO.	41147
						SCALE	DATE
						1:24	08AUG23
						DRAWN BY	08AUG23
						RWR	08AUG23
						CHECKED BY	08AUG23
						JAP	08AUG23
						SHEET SIZE	SHEET NO.
						D	1 OF 1
REV	DATE	BY	CH	SABER FR	TITLE	1500-D-1000P, 980G WATER, 20G FOAM, 152" PUMPER BODY (2) CROSSLAYS, LADDER BRACKETS RS, LOW RS/FH LS	
10JAN24		WHO	CGA	PIERCE	FOR	RALEIGH FIRE DEPARTMENT RALEIGH, NORTH CAROLINA	
20NOV23		WHO	JAP	MODEL	DWG NO.	41147AD	