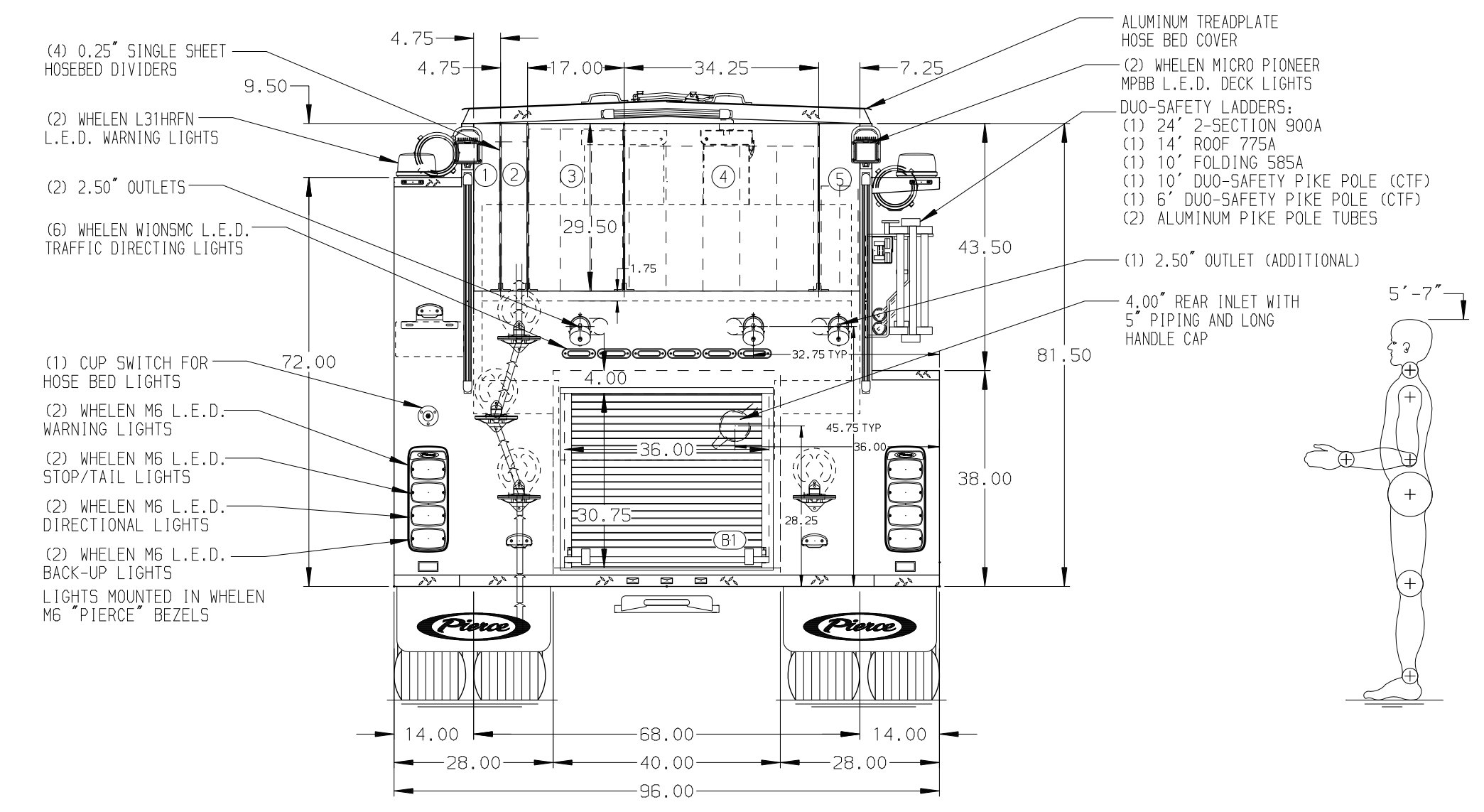
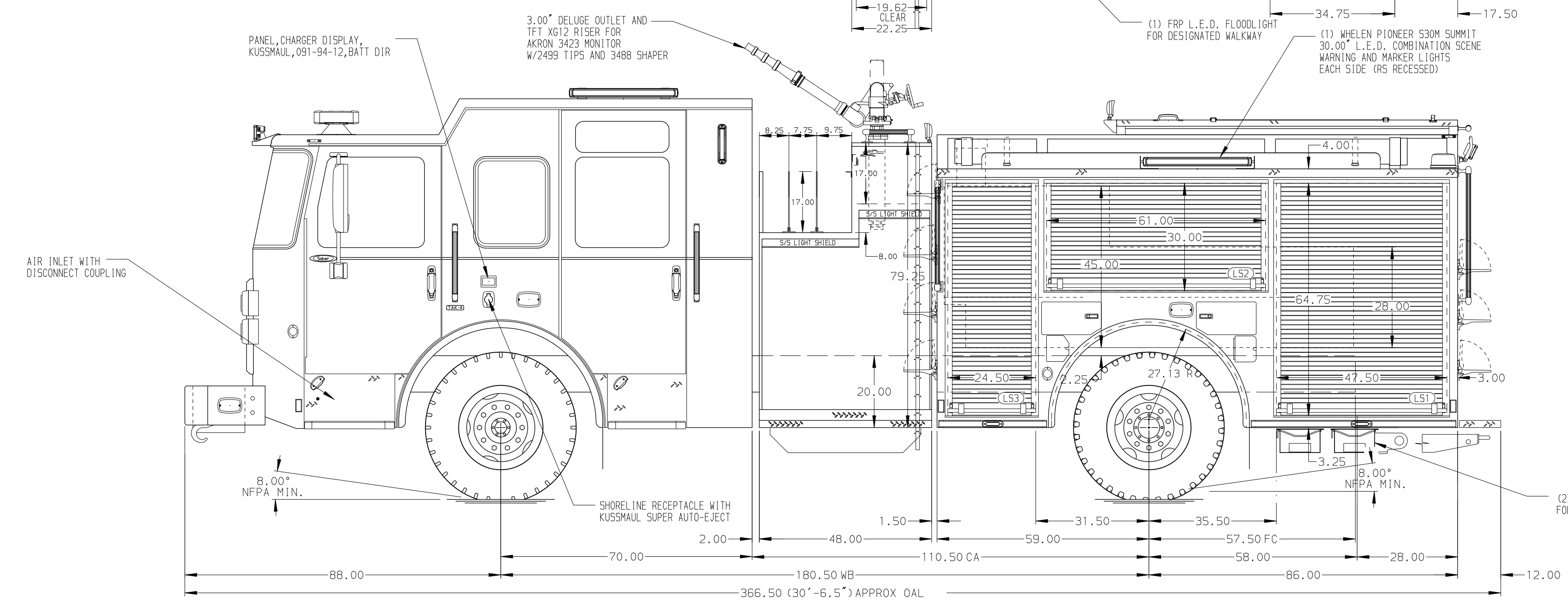


- HOSEBED CAPACITIES
- ① 250' OF 2.50" D.J. HOSE
  - ② 250' OF 2.50" D.J. HOSE
  - ③ 800' OF 3.00" D.J. HOSE
  - ④ 1200' OF 4.00" D.J. HOSE
  - ⑤ 400' OF 1.75" D.J. HOSE



ALUMINUM BODY

SIDE ROLL AND FRONTAL IMPACT PROTECTION

NOTE  
DIMENSIONS SHOWN ARE APPROXIMATE AND ARE SUBJECT TO MINOR DEVIATIONS AS MAY OCCUR OR BE NECESSARY IN CONSTRUCTION. MINOR DETAILS NOT SHOWN.

REV	DATE	BY	CH	SABER FR
17MAY24	RWR	CGA		CHASSIS DATA
11JAN24	WHO	CGA		MAKE
28DEC23	RWR	JAP		PIERCE
15DEC23	RHU	JAP		MODEL

	JOB NO.	41195
	SCALE	DATE
TITLE	1500-D-770P, 750 WATER W/20 FOAM, 145" BODY (3) CROSSLAYS, RS LADDER BRACKETS	DRAWN BY
FOR	BELLINGHAM FIRE DEPARTMENT MA BELLINGHAM, MASSACHUSETTS	RWR
DWG NO.	41195AD	CHECKED BY
		JAP
		SHEET SIZE
		D
		SHEET NO.
		1 OF 1