

# PUMPER BODY

Long Aluminum 2nd Gen Pumper

# CHASSIS

Sober FR Chassis

# CHASSIS AXLE, FRONT, CUSTOM

DANA, D-2000F, 20,000 LB

# AXLE, REAR

27,000 Lb Dana Axle

# ENGINE

450 HP Cummins L9 Engine

# TRANSMISSION

Allison 6th Gen, 3000 EVS P

# BUMPER

19" Extended Steel Painted

# CAB

7010 Sober FR Cab

# BODY WATER TANK

1000 Gallon New York Style Water Tank

# COMPT, PUMPER, REAR

23.50" FF RollUp Rear Compt

# COMPT, PUMPER, LEFT SIDE

171" RollUp Full Height & Depth, Front & Rear Cleaveland Notch 12"

# COMPT, PUMPER, RIGHT SIDE

171" RollUp Full Height & Depth, Front & Rear Cleaveland Notch 12"

# FIRE SUPPRESSION PUMPHOUSE

45" Control Zone Side Mount

# PUMP

1500 GPM Waterous CSU

# CROSSLAYS, 1.50"

(2) 1.50" Standard Capacity

# CROSSLAYS, 2.50"

2.50" Crosslay Not Required

# SPEEDLAYS

Speedlays Not Required

# GENERATOR

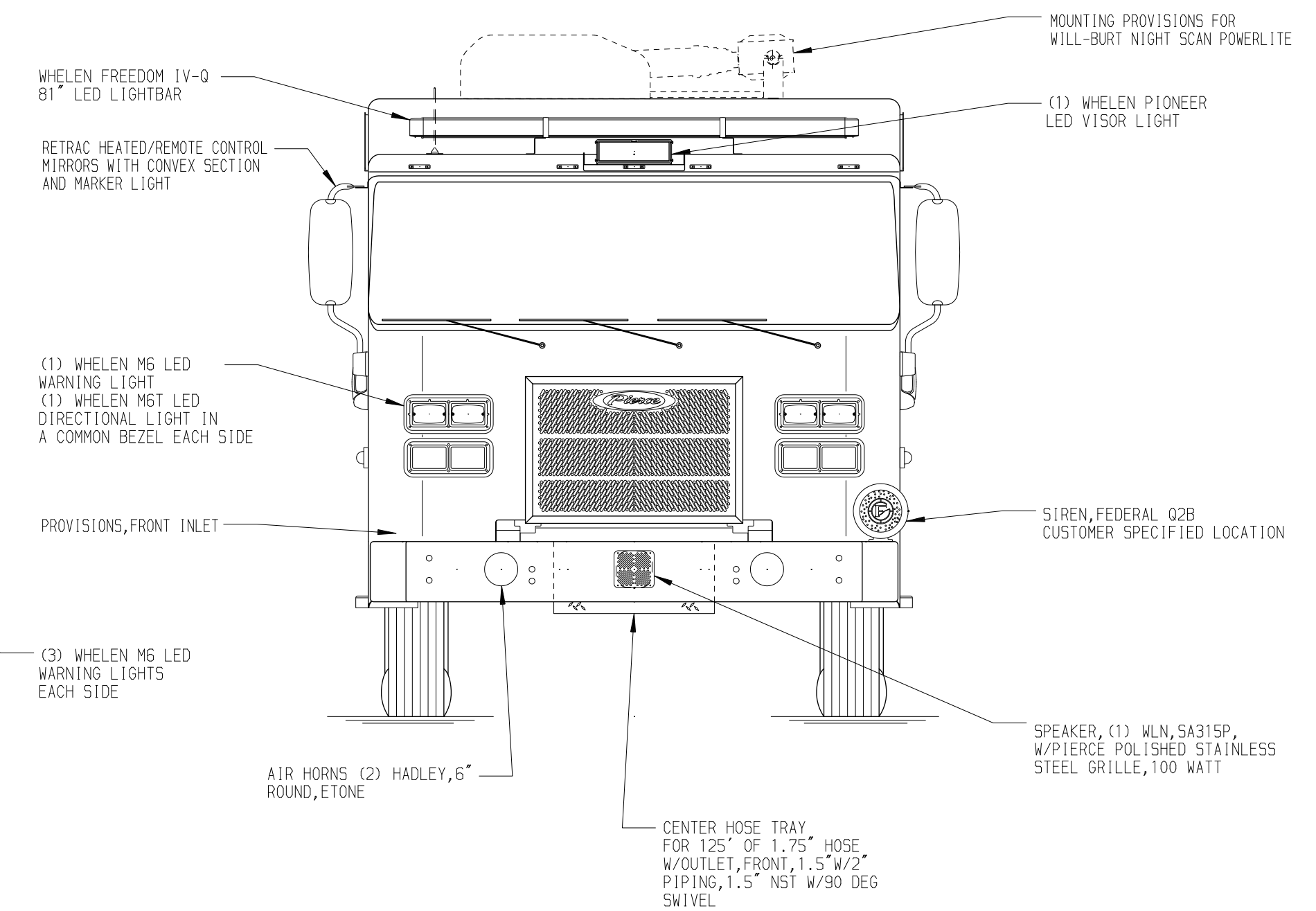
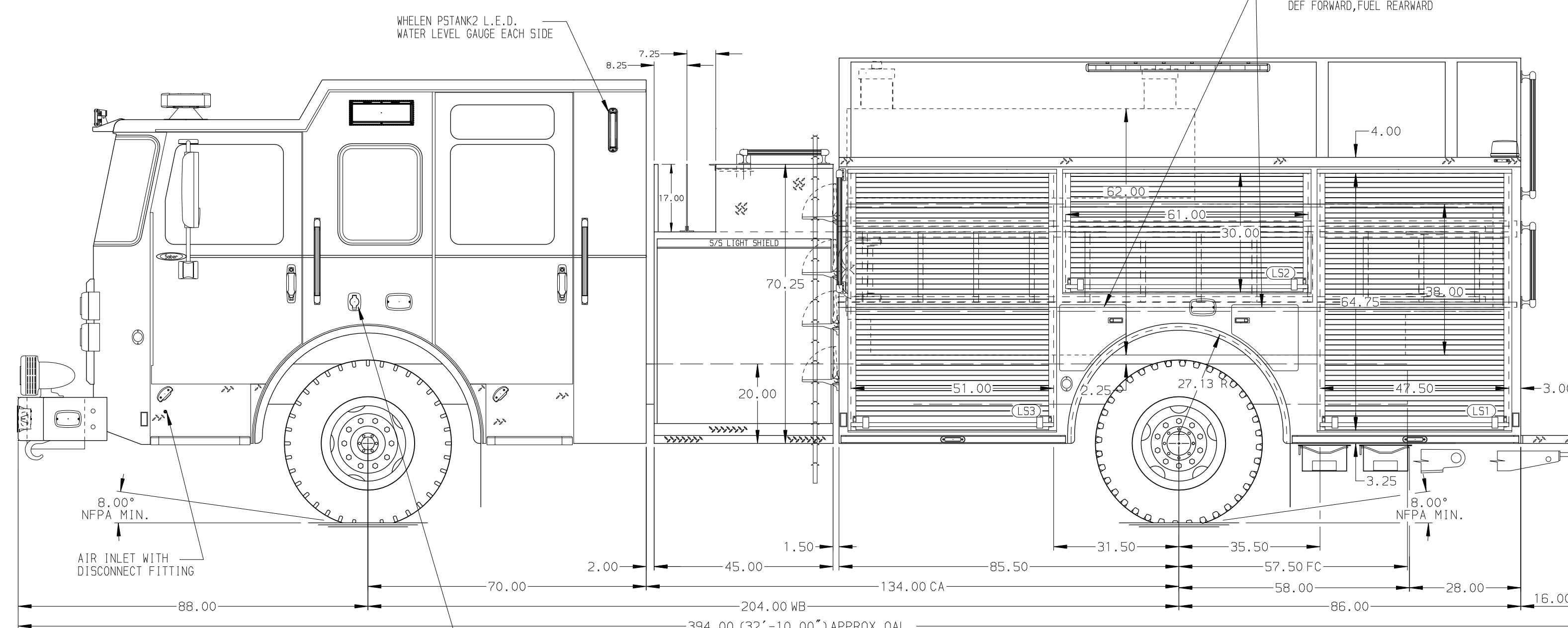
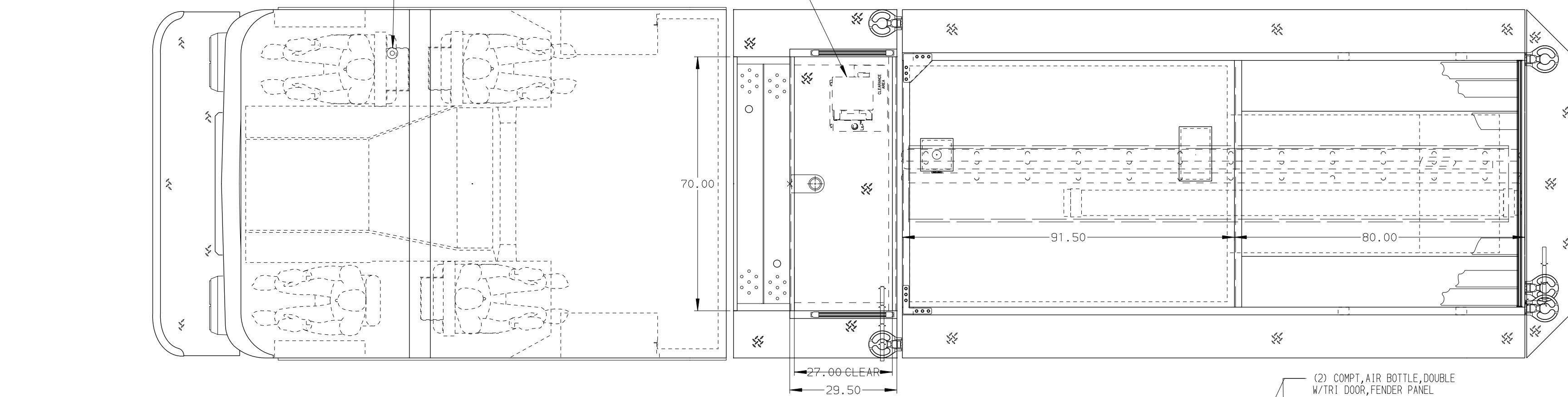
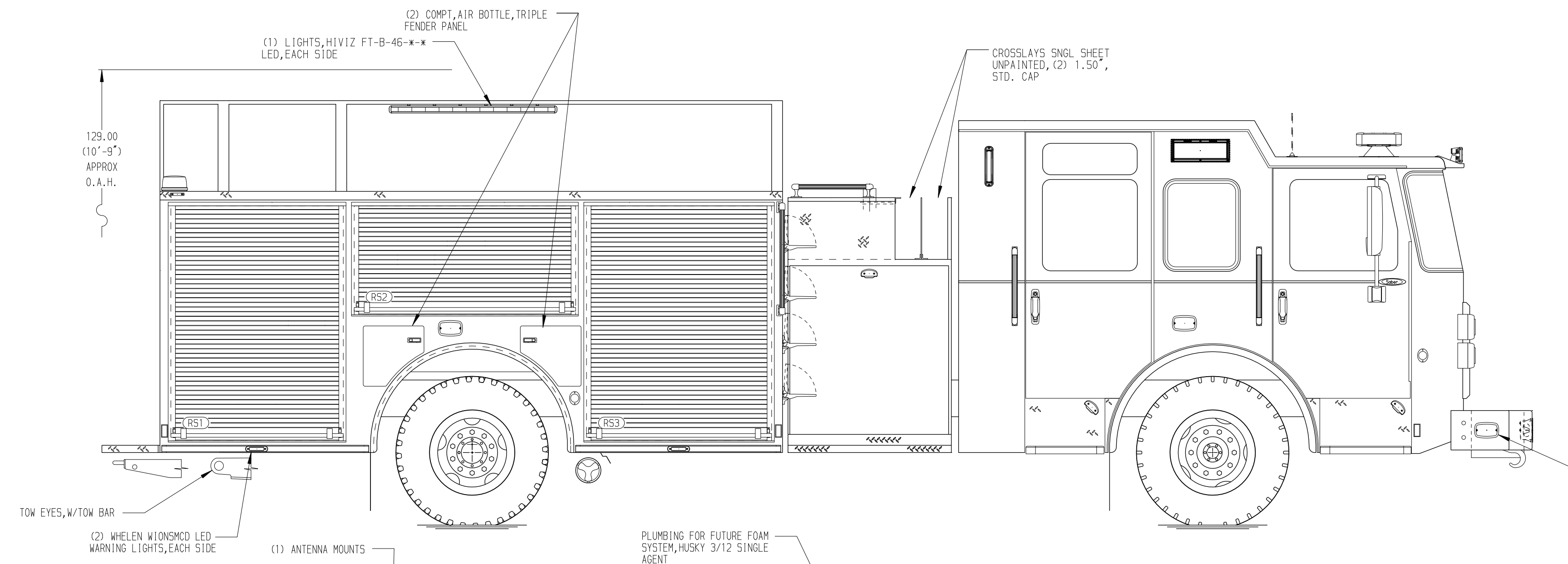
Generator Not Required

# Foam System

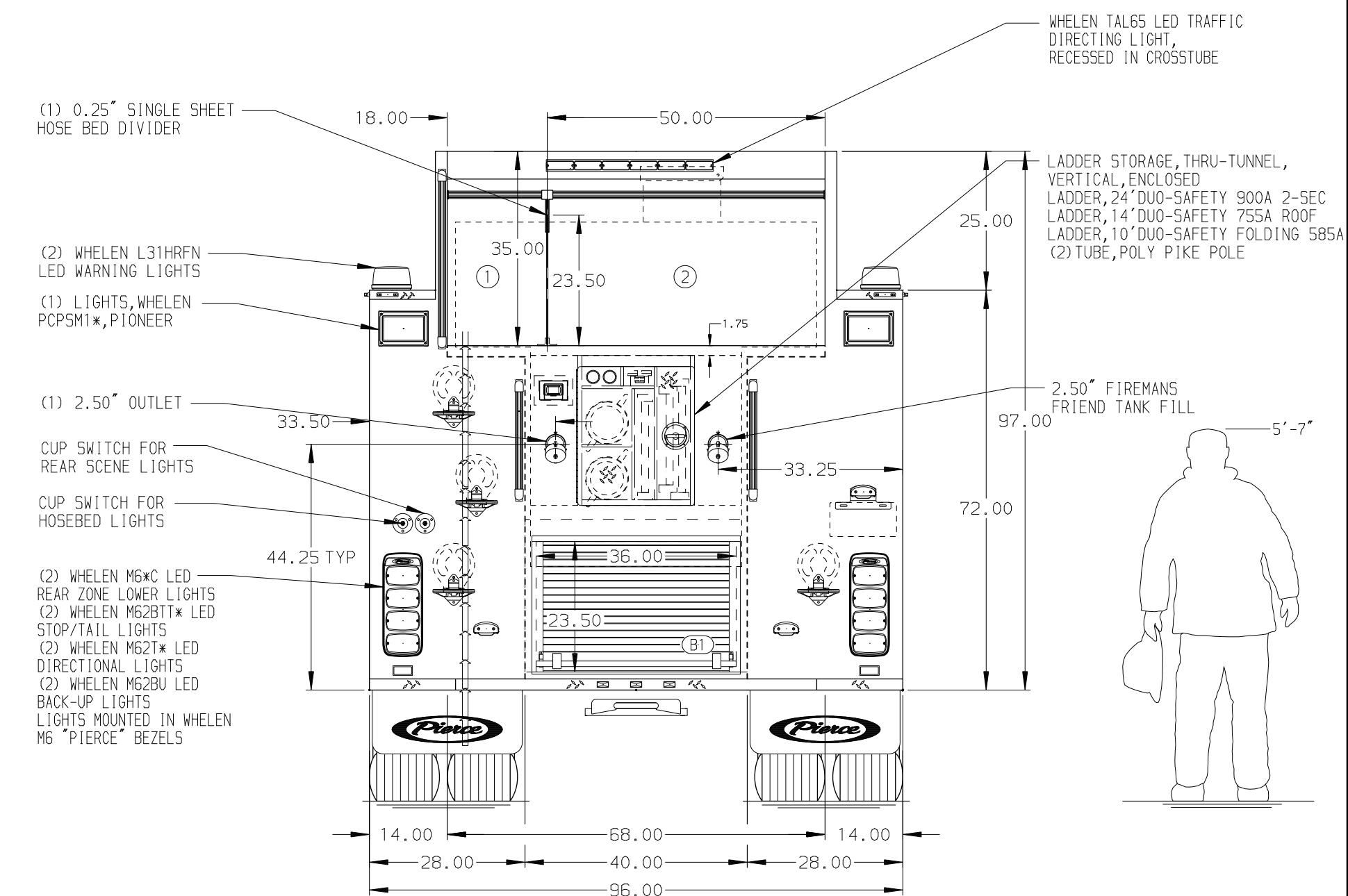
Husky 3 Single Agent Foam System

# Foam Cell

20 Gallon Foam Cell, Not Reduced Water



HOSEBED CAPACITY	
BED 1	400' OF 3.00" D.J. POLY HOSE
BED 2	1000' OF 5.00" D.J. POLY HOSE



**NOTE**  
DIMENSIONS SHOWN ARE APPROXIMATE AND ARE SUBJECT TO MINOR DEVIATIONS AS MAY OCCUR OR BE NECESSARY IN CONSTRUCTION. MINOR DETAILS NOT SHOWN.

- ONE 1.50" OUTLET WITH 2.00" PIPING AND SWIVEL LOCATED IN CENTER BUMPER TRAY
- SHORELINE RECEPTACLE WITH KUSSMAUL SUPER AUTO-EJECT LOCATED ON DRIVER SIDE OF THE CAB
- AIR INLET WITH DISCONNECT COUPLING IN THE DRIVER SIDE STEPWELL
- BATTERY CHARGER LOCATED IN COMPARTMENT PER SHOP ORDER
- BATTERY CHARGE INDICATOR LOCATED ON THE DRIVER SIDE THROUGH WINDOW
- SIX ADJUSTABLE SHELVES IN COMPARTMENTS PER SHOP ORDER
- PLUMBING FOR FUTURE HUSKY FOAM SYSTEM

REV	DATE	BY	CH	SABER FR
01FEB24	WHO	JAP		

<b>Pierce MANUFACTURING INC.</b>		JOB NO.	41247
TITLE		SCALE	DATE
Pierce Pumper Approval Drawing		1:24	
FOR		CHECKED BY	040CT23
LONGBOAT KEY FIRE & RESCUE DEPT		JAP	050CT23
LONGBOAT KEY, FLORIDA		SHEET SIZE	SHEET NO.
DWG NO.		D	1 OF 1
41247AD			