

PUMPER BODY

Long Aluminum 2nd Gen Pumper

CHASSIS

Sober FR Chassis

CHASSIS

AXLE, FRONT, CUSTOM

MERITOR FL-941, 18,000 LB, SABER, FR/ENFORCER

AXLE, REAR

27,000 Lb Meritor Axle

ENGINE

450 HP Cummins L9 Engine

TRANSMISSION

ALLison 6th Gen, 3000 EVS P

BUMPER

19" Extended Painted Steel

CAB

7010 Sober FR Cab

BODY

WATER TANK

980 Gallon Poly Water Tank

COMPT, PUMPER, REAR

44.50" FF RollUp Rear Compt

COMPT, PUMPER, LEFT SIDE

161" RollUp Full Height Front & Rear FDLR

COMPT, PUMPER, RIGHT SIDE

161" RollUp Full Height Front & Rear FDLR

FIRE SUPPRESSION PUMPHOUSE

52" Control Zone Side Mount

PUMP

1500 GPM Waterous CSU

CROSSLAYS, 1.50"

(2) 1.50" Standard Capacity

CROSSLAYS, 2.50"

(1) 2.50" Standard Capacity

SPEEDLAYS

Speedlays Not Required

GENERATOR

Generator Not Required

Foam System

PLUMBING FOR FUTURE FOAM SYSTEM

Husky 3, Single Agent

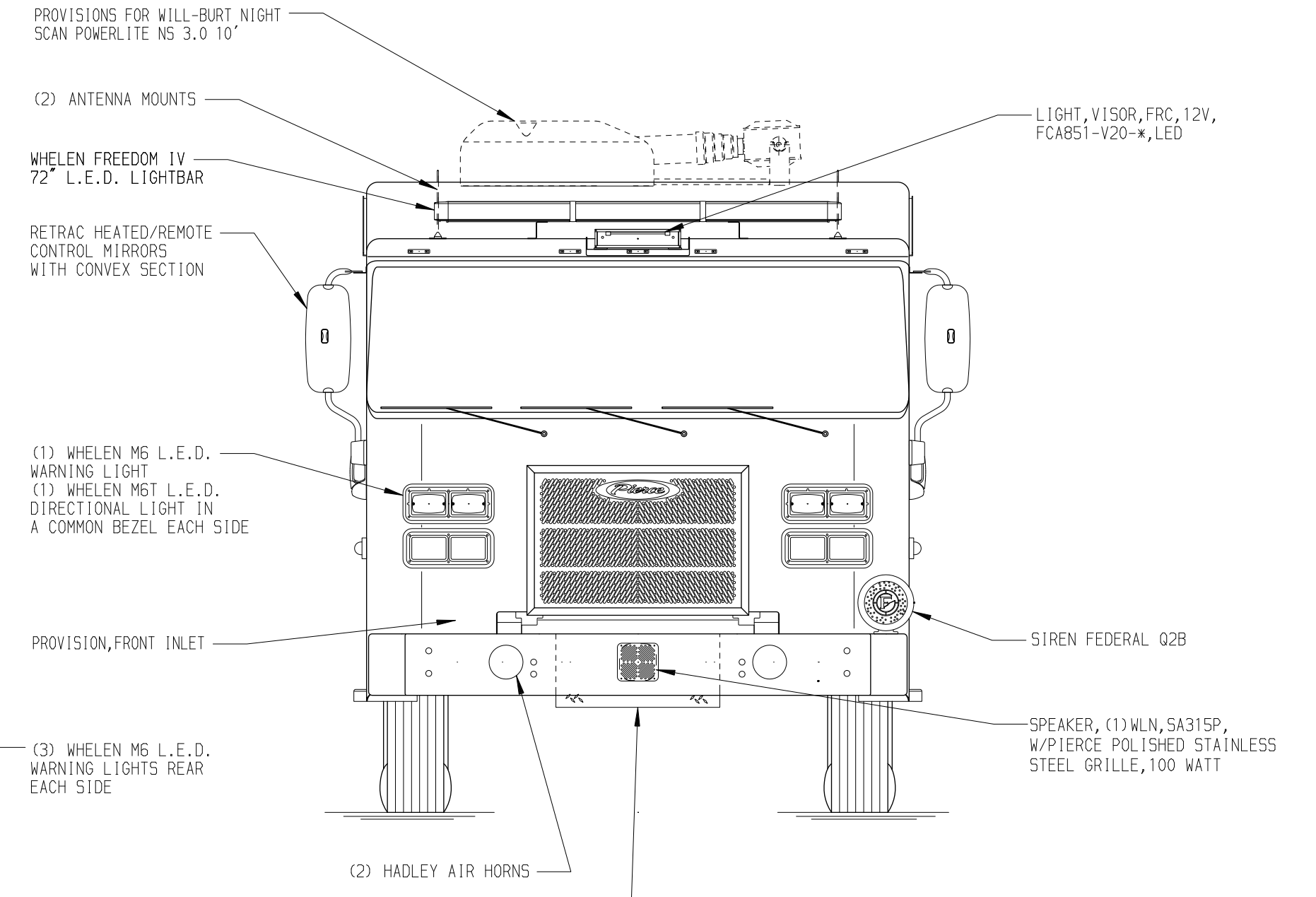
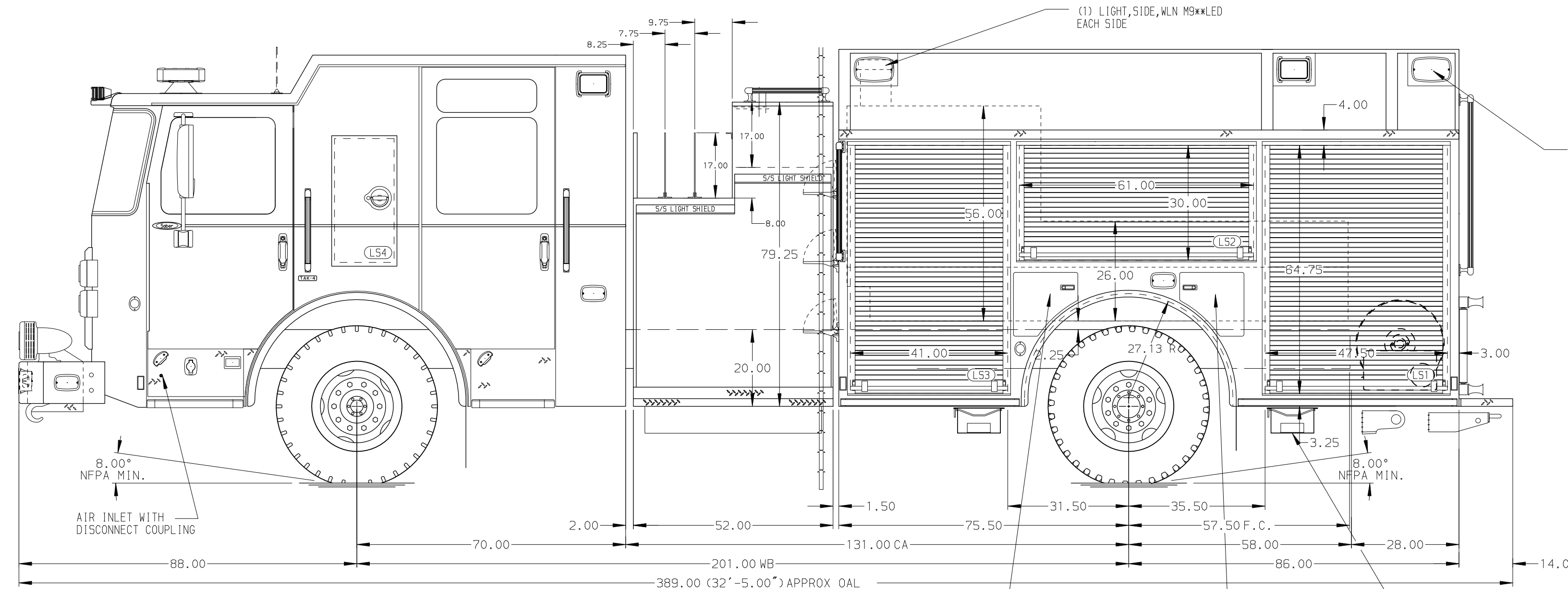
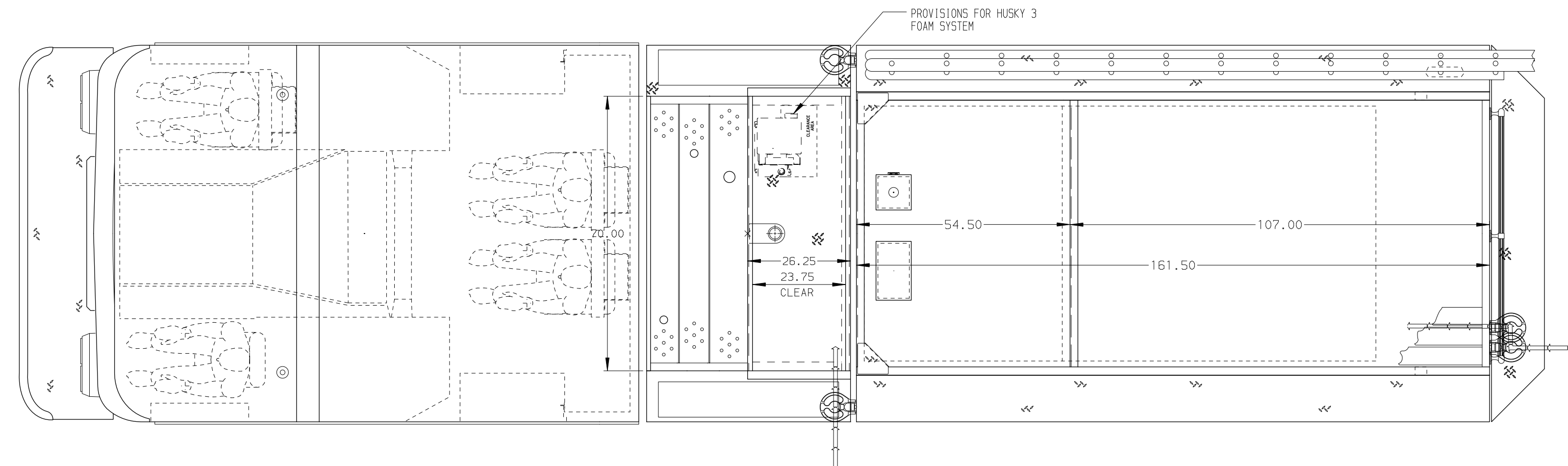
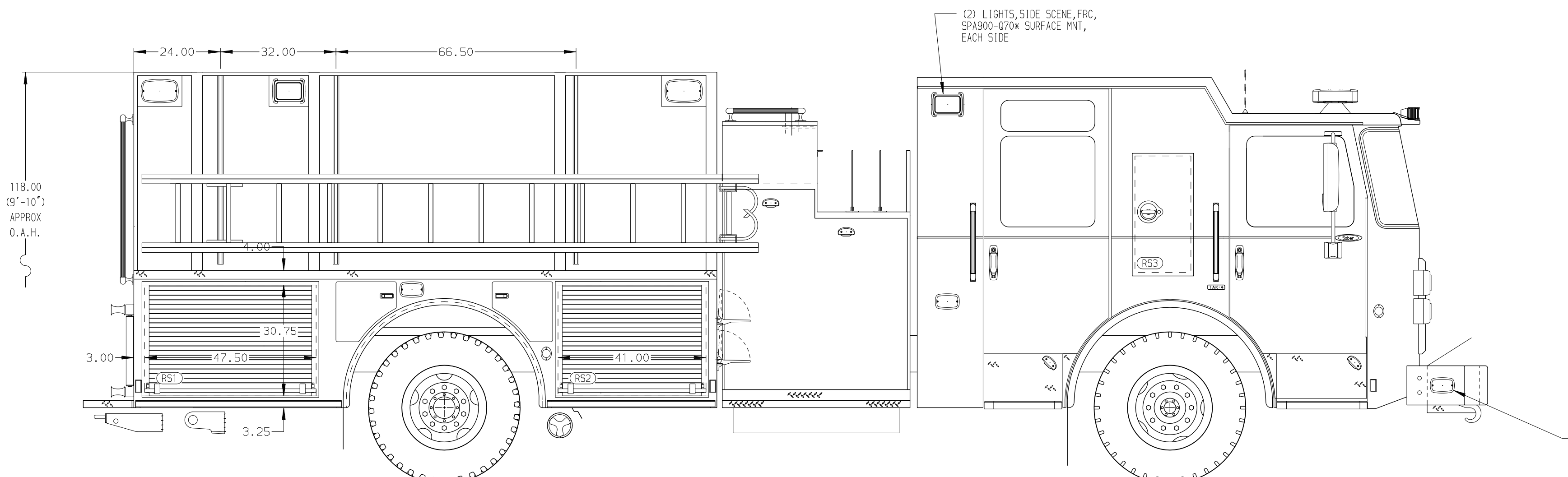
Foam Cell

20 Gallon Foam Cell, Reduced Water

NOTE

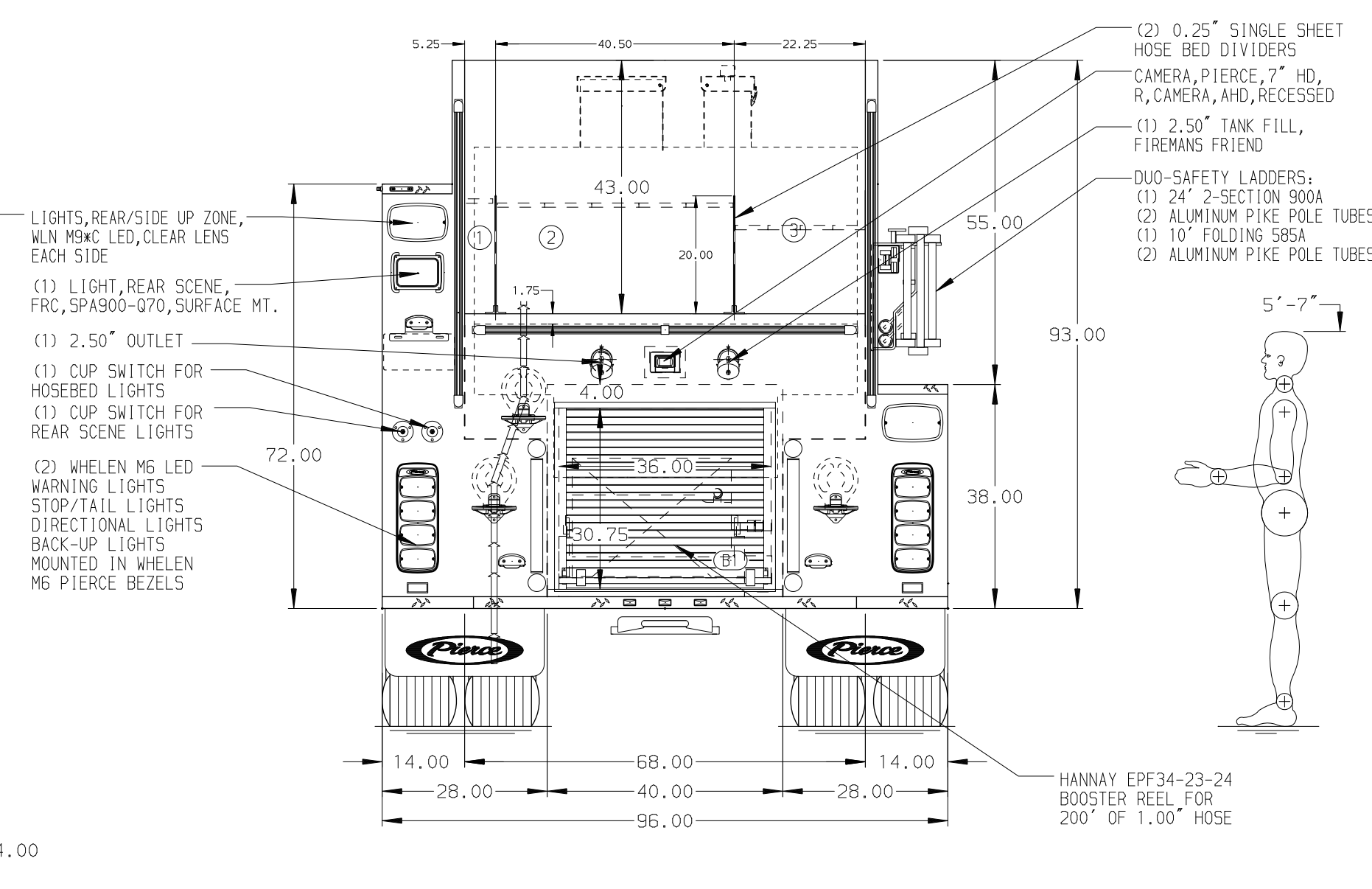
DIMENSIONS SHOWN ARE APPROXIMATE AND ARE SUBJECT TO MINOR DEVIATIONS AS MAY OCCUR OR BE NECESSARY IN CONSTRUCTION. MINOR DETAILS NOT SHOWN.

- ONE 1.50" OUTLET WITH 2.00" PIPING AND SHIVEL LOCATED IN CENTER BUMPER TRAY
- SHORELINE RECEPTACLE WITH KUSSMAUL SUPER AUTO-EJECT LOCATED ON DRIVER SIDE OF THE CAB
- AIR INLET WITH DISCONNECT COUPLING IN THE DRIVER SIDE STEPWELL
- BATTERY CHARGER LOCATED IN COMPARTMENT PER SHOP ORDER
- BATTERY CHARGE INDICATOR LOCATED ON THE DRIVER SIDE SEAT RISER
- ADJUSTABLE SHELVES IN COMPARTMENTS PER SHOP ORDER
- ONE FLOOR MOUNTED SLIDE-OUT TRAY IN COMPARTMENT PER SHOP ORDER
- MOUNTING PROVISIONS FOR FRONT INLET
- MOUNTING PROVISIONS FOR WILL BURT NIGH SCAN POWERLITE NS 3.0 10" ON CAB



HOSEBED CAPACITIES

1	200' OF 2.50" D.J. POLY HOSE
2	1000' OF 5.00" D.J. POLY HOSE
3	600' OF 3.00" D.J. POLY HOSE



		JOB NO.	41337
		SCALE	DATE
TITLE	Pierce Pumper Approval Drawing	DRAWN BY	RHU 180CT23
FOR	COLUMBIA COUNTY MARTINEZ, GA	CHECKED BY	JAP 190CT23
DWG NO.	41337AD	SHEET SIZE	SHEET NO.
NO.		D	1 OF 1

REV	DATE	BY	CH	SABER FR
01MAR24	WHO	JAP	MAKE	
28DEC23	RWR	CGA	PIERCE	
17NOV23	RWR	JAP	MODEL	