

**PUMPER
BODY**

Medium Aluminum 2nd Gen Pumper

CHASSIS

Enforcer Chassis

**CHASSIS
AXLE, FRONT, CUSTOM**

18,000 Lb Oshkosh Tak-4 Axle

AXLE, REAR

24,000 Lb Meritor Axle

ENGINE

510 HP Paccar MX13

TRANSMISSION

Allison 6th Gen, 3000 EVS P

BUMPER

19" Extended Painted Steel

CAB

7010 Enforcer Cab

BODY

WATER TANK

750 Gallon New York Style Water Tank

COMPT, PUMPER, REAR

30.75" FF RollUp Rear Compt

COMPT, PUMPER, DRIVER SIDE

152" RollUp Full Height Front & Rear FDLR

COMPT, PUMPER PASS. SIDE

152" RollUp Full Height Front & Rear FDLR

**FIRE SUPPRESSION
PUMPHOUSE**

48" Control Zone Side Mount

PUMP

1500 GPM Waterous CSU

CROSSLAYS, 1.50"

(2) 1.50" Standard Capacity

CROSSLAYS, 2.50"

(1) 2.50" Standard Capacity

SPEEDLAYS

SpeedLays Not Required

GENERATOR

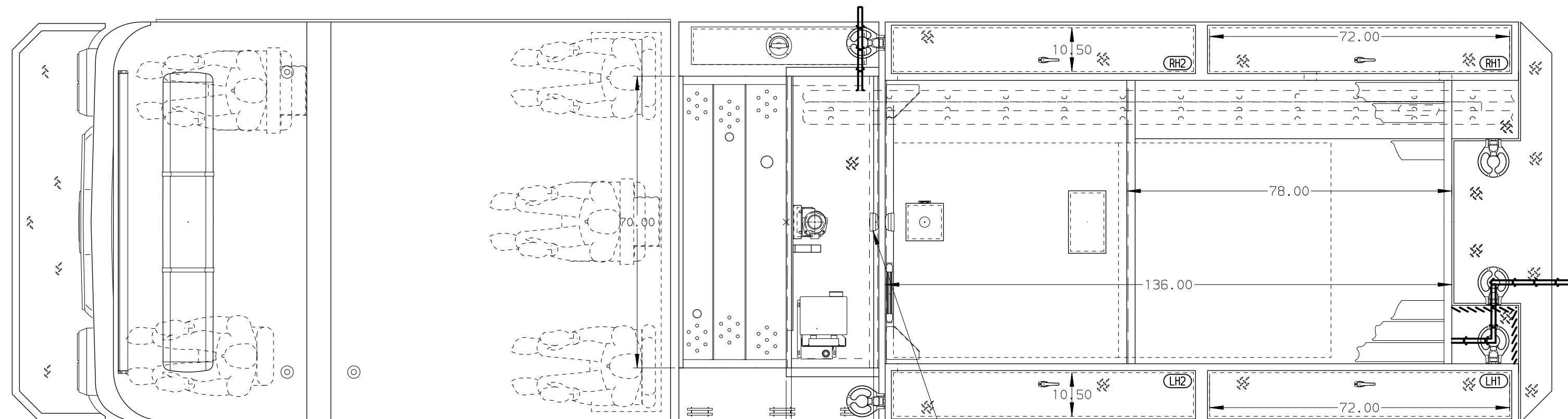
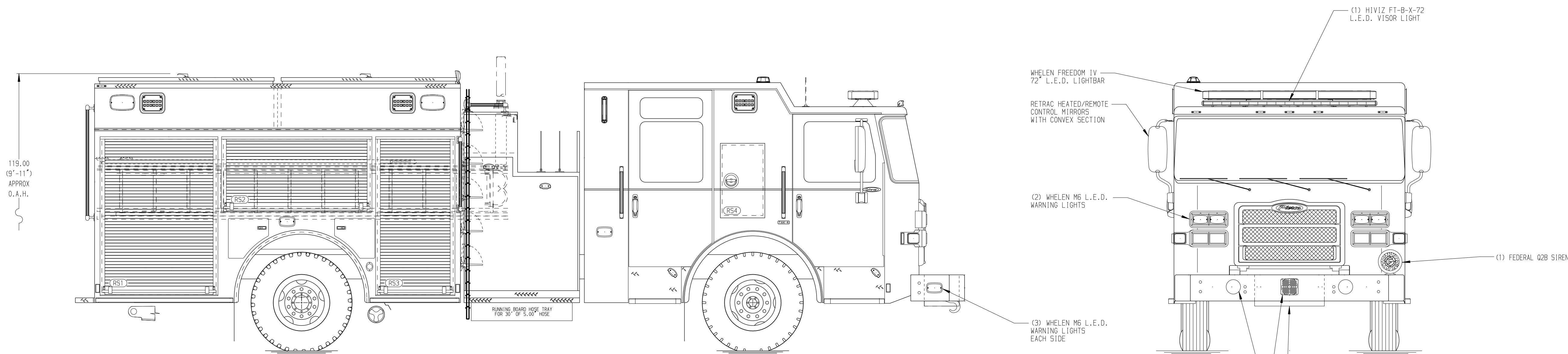
Generator Not Required

Foam System

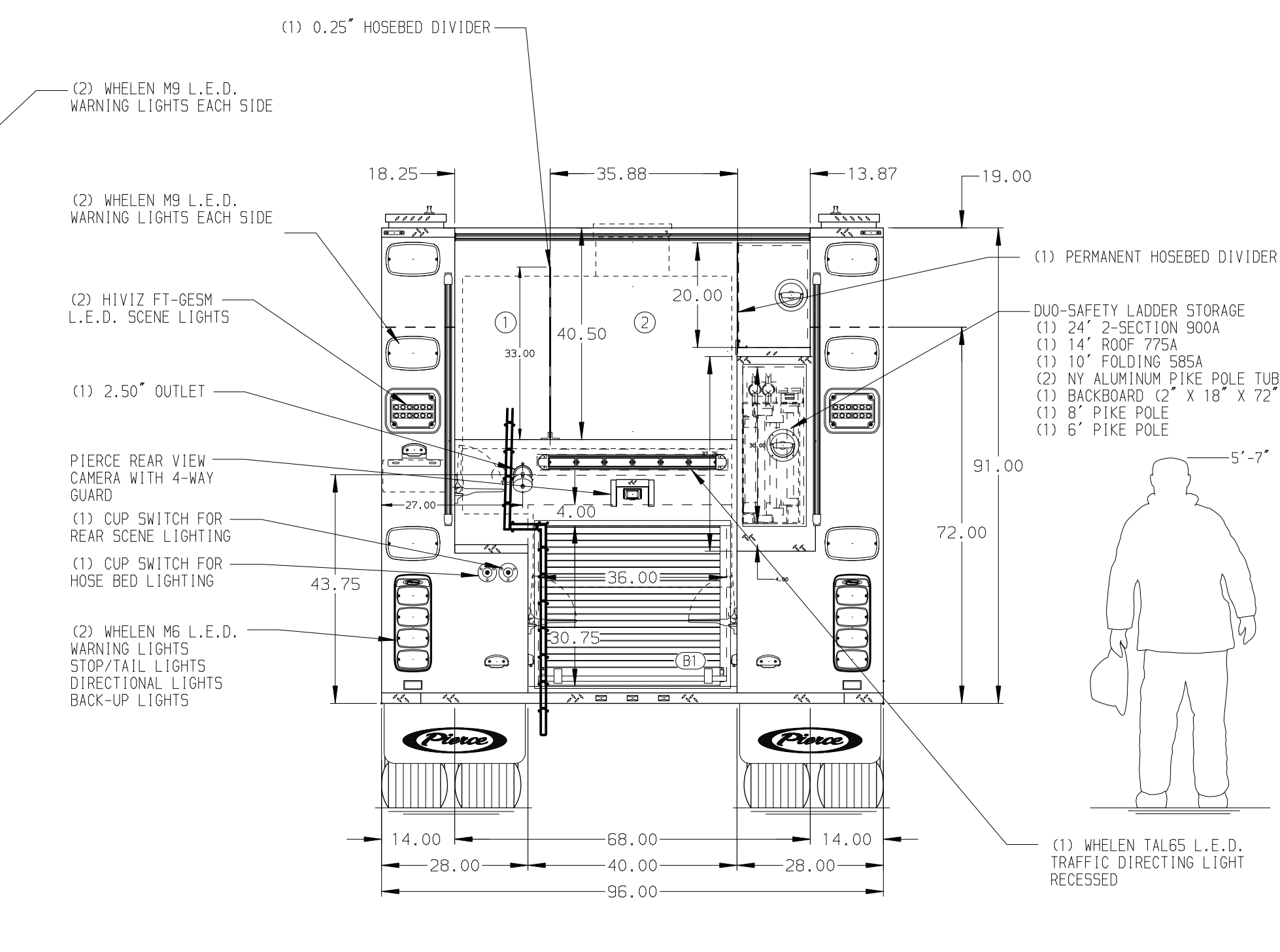
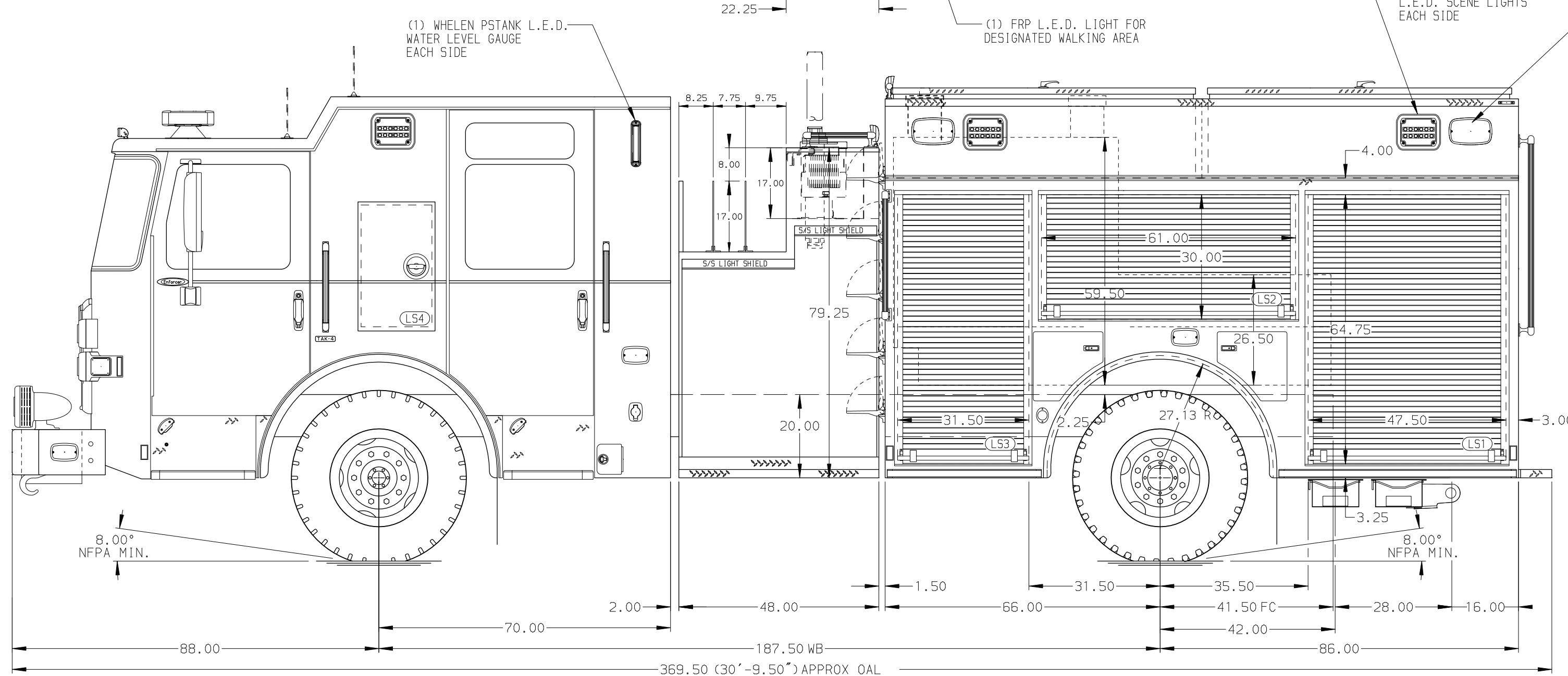
Husky 3 Foam System

Foam Cell

20 Gallon Foam Cell, Not Reduced Water



HOSEBED CAPACITY	
BED 1	500' OF 3.00" D.J. POLY HOSE
BED 2	1000' OF 5.00" D.J. POLY HOSE



NOTE
DIMENSIONS SHOWN ARE APPROXIMATE AND ARE SUBJECT TO MINOR DEVIATIONS AS MAY OCCUR OR BE NECESSARY IN CONSTRUCTION. MINOR DETAILS NOT SHOWN.

- ONE 1.50" OUTLET WITH 2.00" PIPING AND SWIVEL LOCATED IN CENTER BUMPER TRAY
- SHOULDER RECEPTACLE WITH KUSMAUL SUPER AUTO-EJECT LOCATED ON DRIVER SIDE OF CREW CAB
- AIR INLET WITH DISCONNECT COUPLING IN THE DRIVER SIDE STEPWELL
- BATTERY CHARGER LOCATED BEHIND DRIVER'S SEAT
- FIVE ADJUSTABLE SHELVES IN COMPARTMENTS PER SHOP ORDER
- TWO 120V RECEPTACLES LOCATED PER SHOP ORDER
- TWO FLOOR MOUNTED TRAYS LOCATED IN COMPARTMENT PER SHOP ORDER
- BATTERY CHARGER INDICATOR LOCATED DRIVER SIDE SEAT RISER

CUSTOMER APPROVAL
APPROVED BY: _____
DATE: _____



JOB NO. 41338
SCALE 1:24
DATE _____

REV	DATE	BY	CH	ENFORCER
1	11DEC23	MMF	THS	

TITLE	FOR	DWG NO.
Pierce Pumper Approval Drawing	Pierce Stock Field Unit	41338AD

DRAWN BY	CHECKED BY	SHEET SIZE	SHEET NO.
AMI	THS	D	1 OF 1