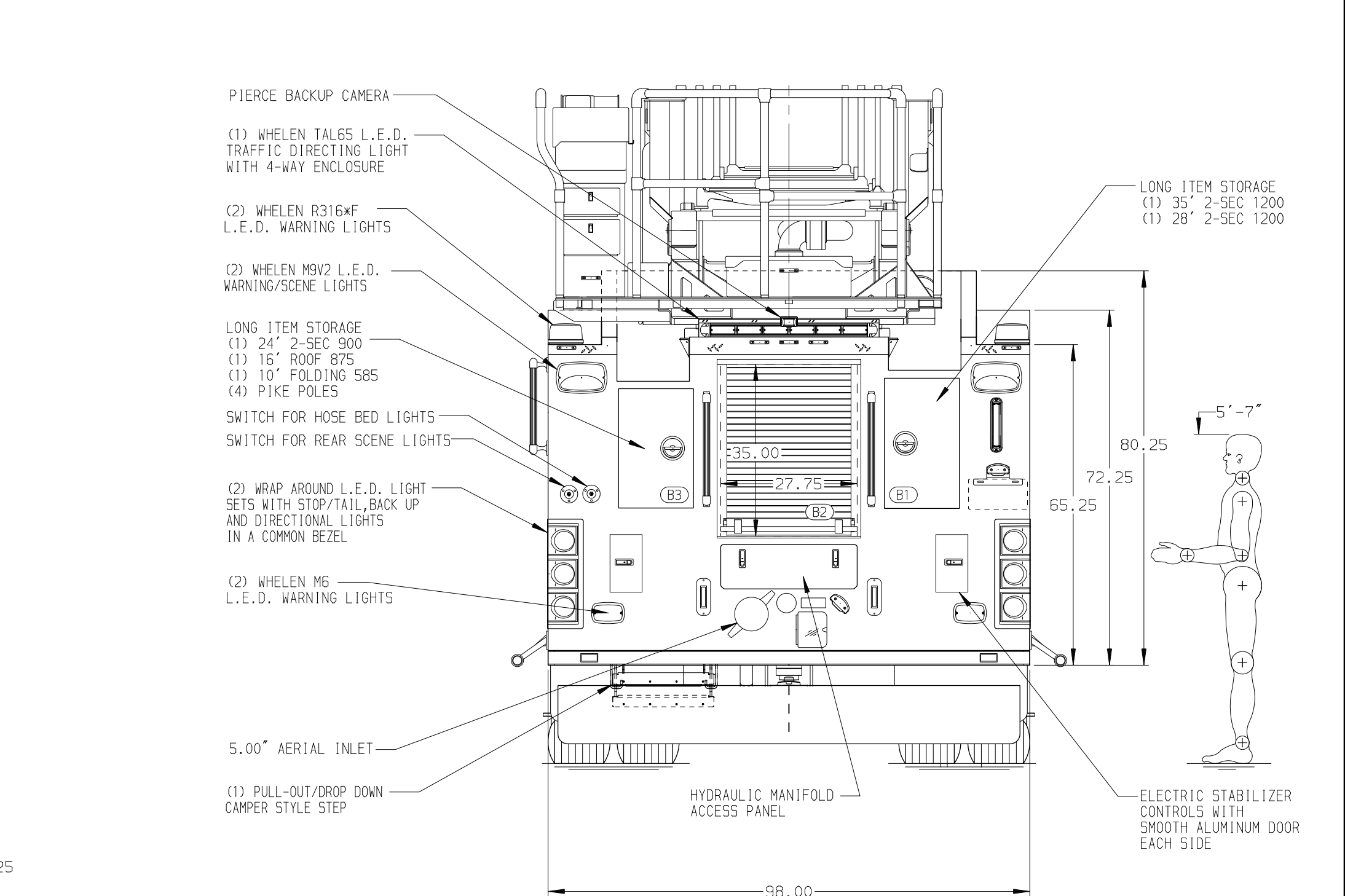


BODY	WATER TANK
107' ASL Aluminum Body	500 Gallon Poly Water Tank
COMPT, LEFT SIDE FRONT	Foam System
Full Height Lap Forward	External Foam System
COMPT, LEFT SIDE REAR	Foam Cell
Full Height Lap Forward	30 Gallon Poly Foam Tank in Cargo Area
COMPT, RIGHT SIDE FRONT	
Full Height Lap Forward	
COMPT, RIGHT SIDE REAR	
Full Height Lap Forward	



CHASSIS	CAB	AXLE, FRONT, CUSTOM	TRANSMISSION	PUMPHOUSE	CROSSLAYS, 1.50"	SPEEDLAYS	SAFETY
Enforcer Chassis	7000 Enforcer Cab	21,500 Lb Dana Axle	Allison 6th Gen, 3000 EV5 P	54" Control Zone Side Mount	(2) 1.50" Standard Capacity	Speedlays Not Required	Side Roll and
ENGINE	BUMPER	AXLE, REAR		PUMP	CROSSLAYS, 2.50"	GENERATOR	Frontal Impact Protection
450 HP Cummins L9 Engine	26" Under Slung Painted Steel	33,500 Lb Meritor Axle		1500 GPM Waterous CSU	(1) 2.50" Standard Capacity	Generator Not Required	

NOTE
DIMENSIONS SHOWN ARE APPROXIMATE AND ARE SUBJECT TO MINOR DEVIATIONS AS MAY OCCUR OR BE NECESSARY IN CONSTRUCTION. MINOR DETAILS NOT SHOWN.

- NO LIMITED RETRACTION REQUIRED
- TWO VERTICAL PARTITIONS PER ORDER
- SHOULDER RECEPTACLE WITH KISSMALL SUPER AUTO-EJECT LOCATED IN DRIVERS STEPWELL
- AIR INLET WITH DISCONNECT COUPLING IN THE DRIVER SIDE STEPWELL
- BATTERY CHARGER LOCATED PER ORDER
- TEN ADJUSTABLE SHELVES LOCATED PER ORDER
- THREE FLOOR MOUNTED SLIDE-OUT TRAYS LOCATED PER ORDER
- NON-RAISED AERIAL PEDESTAL
- LIFTING EYE ROPE RESCUE ATTACHMENT AT AERIAL TIP
- 1500 GPM HIGH FLOW WATERWAY
- ONE SWING-OUT TOOLBOARD PER ORDER
- TWO SLIDE-OUT TOOLBOARDS PER ORDER
- THREE PEGBOARD ON BACK WALL PER ORDER
- FIVE 120V RECEPTACLES PER ORDER
- RUNG LIGHTING ON AERIAL LADDER

Pierce MANUFACTURING INC.				JOB NO.	41485
				SCALE	1:24
				DATE	15AUG23
REV	DATE	BY	CH	TITLE	DRAWN BY
09APR24	LWE	COS		107' ASCENDANT AERIAL LADDER AND BODY ASSEMBLY	LWE
19FEB24	LWE	COS		CHASSIS DATA	
14FEB24	LWE	COS		MAKE	
27OCT23	LWE	COS		PIERCE	
14SEPT23	LWE	COS		MODEL	
				FOR	CHECKED BY
					NDA
				DWG NO.	17AUG23
					SHEET SIZE
					SHEET NO.
					1 OF 1