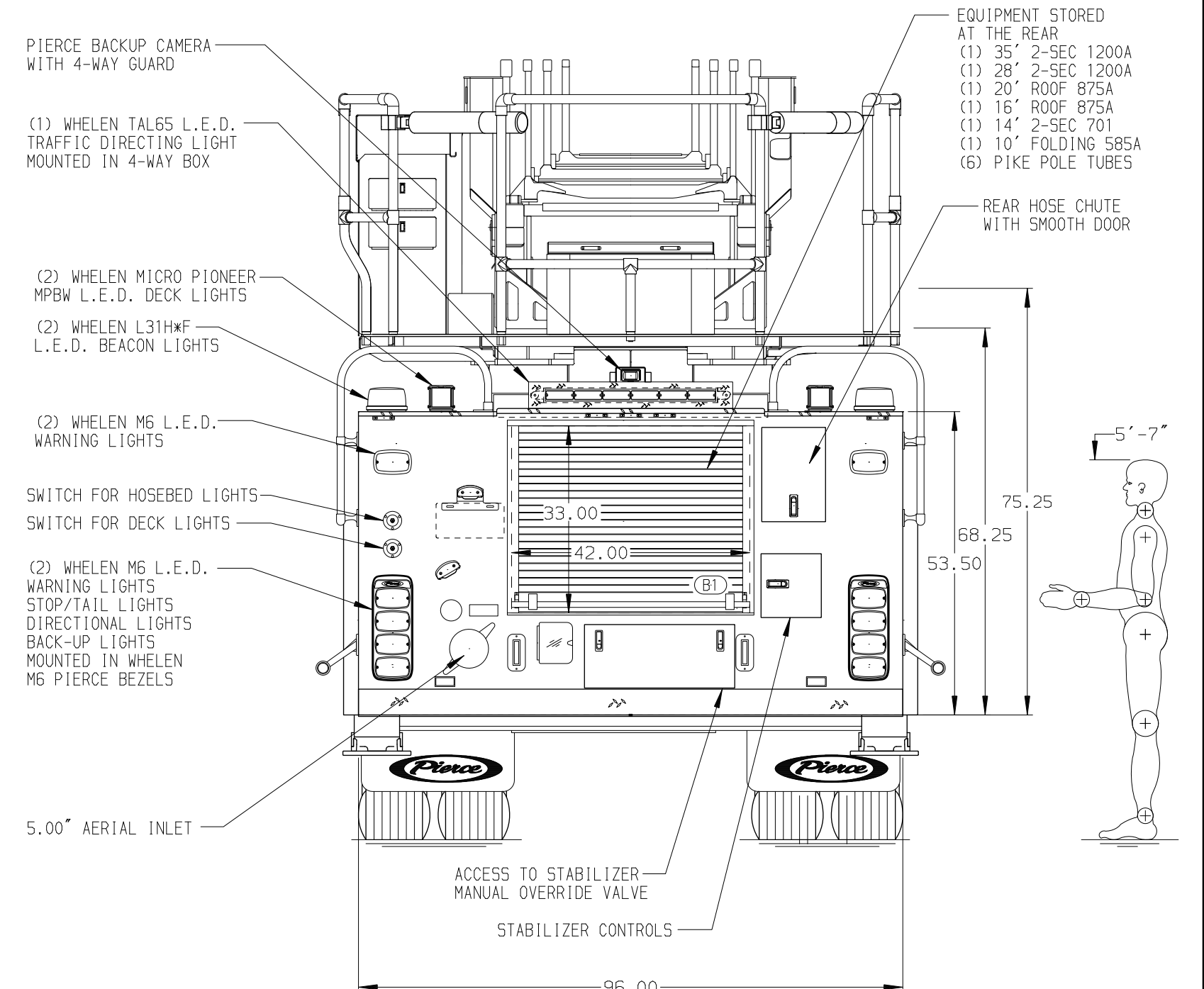
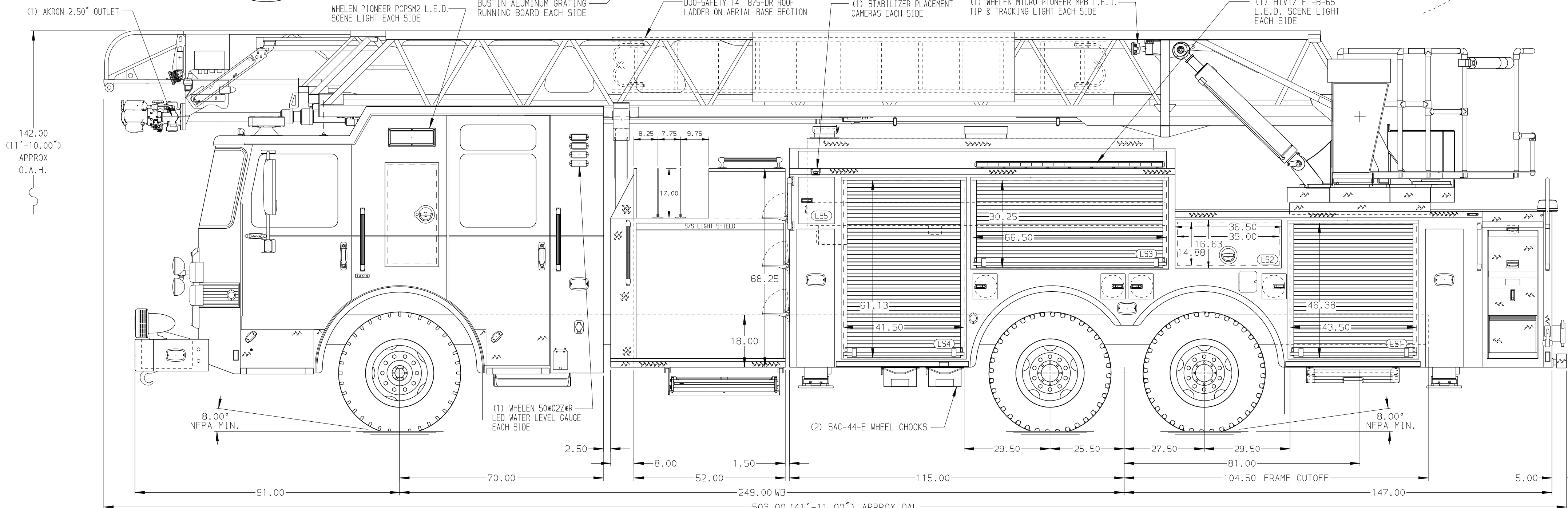


BODY 107' Tandem Axle Platform Aluminum Body COMPT, DRIVER SIDE FRONT FH/FD RollUp w/o Chute COMPT, DRIVER SIDE REAR FH/FD RollUp and Lift-up rearward COMPT, PASSENGER SIDE FRONT Full Height RollUp Forward COMPT, PASSENGER SIDE REAR Full Height RollUp and Liftup Rearward	WATER TANK 500 Gallon Notched Poly Water Tank Foam System Plumbing For Future Foam System Foam Cell 20 Gallon Foam Cell, Non-Reduced Water
---	--



CHASSIS Enforcer Chassis ENGINE 510 HP Paccar MX13 Engine	CAB 7010 Enforcer Cab BUMPER 22" Extended Painted Steel	AXLE, FRONT, CUSTOM 22,800 Lb TAK-4 Axle AXLE, REAR 44,000 Lb Meritor Axle	TRANSMISSION Allison 6th Gen, 4500 EV5 P	PUMPHOUSE 52" Control Zone Side Mount PUMP 2000 GPM Waterous CSU	CROSSLAYS, 1.50" (2) 1.75" Standard Capacity CROSSLAYS, 2.50" (1) 2.50" Standard Capacity	SPEEDLAYS Speedlays Not Required GENERATOR Generator Not Required	SAFETY Side Roll and Frontal Impact Protection	CUSTOMER APPROVAL APPROVED BY: _____ DATE: _____		JOB NO. 41705
NOTE DIMENSIONS SHOWN ARE APPROXIMATE AND ARE SUBJECT TO MINOR DEVIATIONS AS MAY OCCUR OR BE NECESSARY IN CONSTRUCTION. MINOR DETAILS NOT SHOWN.	1. 21.00" LIMITED RETRACTION REQUIRED 2. ONE 1.50" OUTLET WITH 2.00" PIPING AND SWIVEL LOCATED IN CENTER BUMPER TRAY 3. SHORELINE RECEPTACLE WITH KUSSMALL SUPER AUTO-EJECT LOCATED ON DRIVER SIDE OF CREW CAB 4. AIR INLET WITH DISCONNECT COUPLING LOCATED IN DRIVER SIDE STEP WELL 5. BATTERY CHARGER LOCATED BEHIND DRIVER SEAT 6. BATTERY CHARGER INDICATOR ON DRIVER'S SEAT RISER 7. FIVE ADJUSTABLE SHELVES LOCATED IN COMPARTMENTS PER ORDER 8. THREE FLOOR MOUNTED SLIDE-OUT TRAYS LOCATED IN COMPARTMENTS PER ORDER 9. ONE SWING-OUT TOOLBOARD LOCATED IN COMPARTMENT PER ORDER 10. ONE PEGBOARD MOUNTED ON COMPARTMENT BACK WALL LOCATED PER ORDER	11. ONE THREE-DRAWER CTECH CABINET LOCATED IN COMPARTMENT PER ORDER 12. TWO RECEPTACLES LOCATED PER ORDER 13. 1500 GPM HIGH FLOW WATERWAY 14. 3.00" RAISED AERIAL PEDESTAL 15. TECNIO RUNG LIGHTING AT AERIAL DEVICE 16. FIRE RESEARCH 2-WAY INTERCOM	CHASSIS DATA MAKE PIERCE MODEL ENFORCER	TITLE 107' ASCENDANT AERIAL LADDER AND BODY ASSEMBLY FOR CITY OF BELOIT FD BELOIT, WI DWG NO. 41705AD	SCALE 1:24 DATE 090CT23 DRAWN BY ANZ CHECKED BY THS 120CT23 SHEET SIZE D SHEET NO. 1 OF 1					