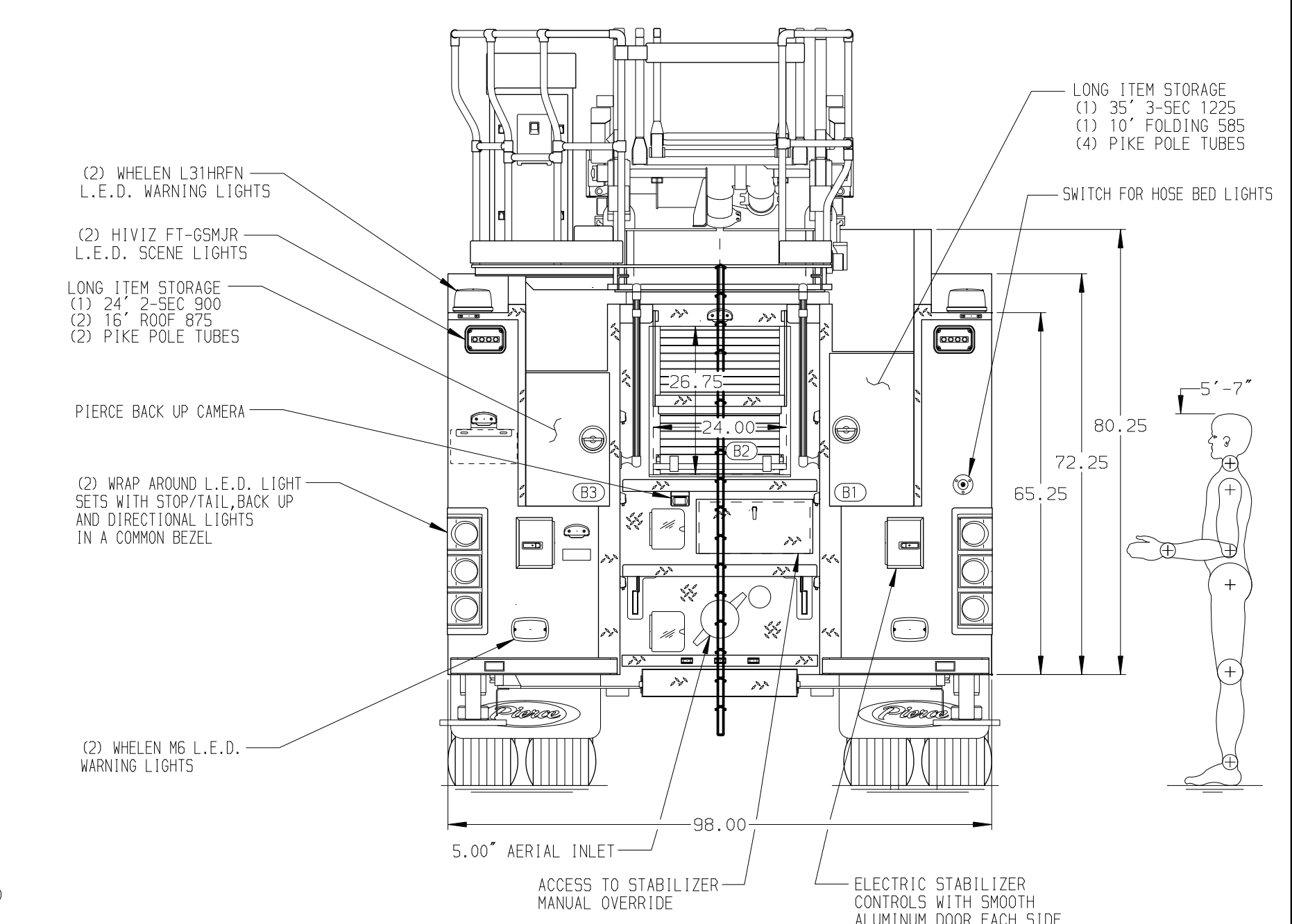
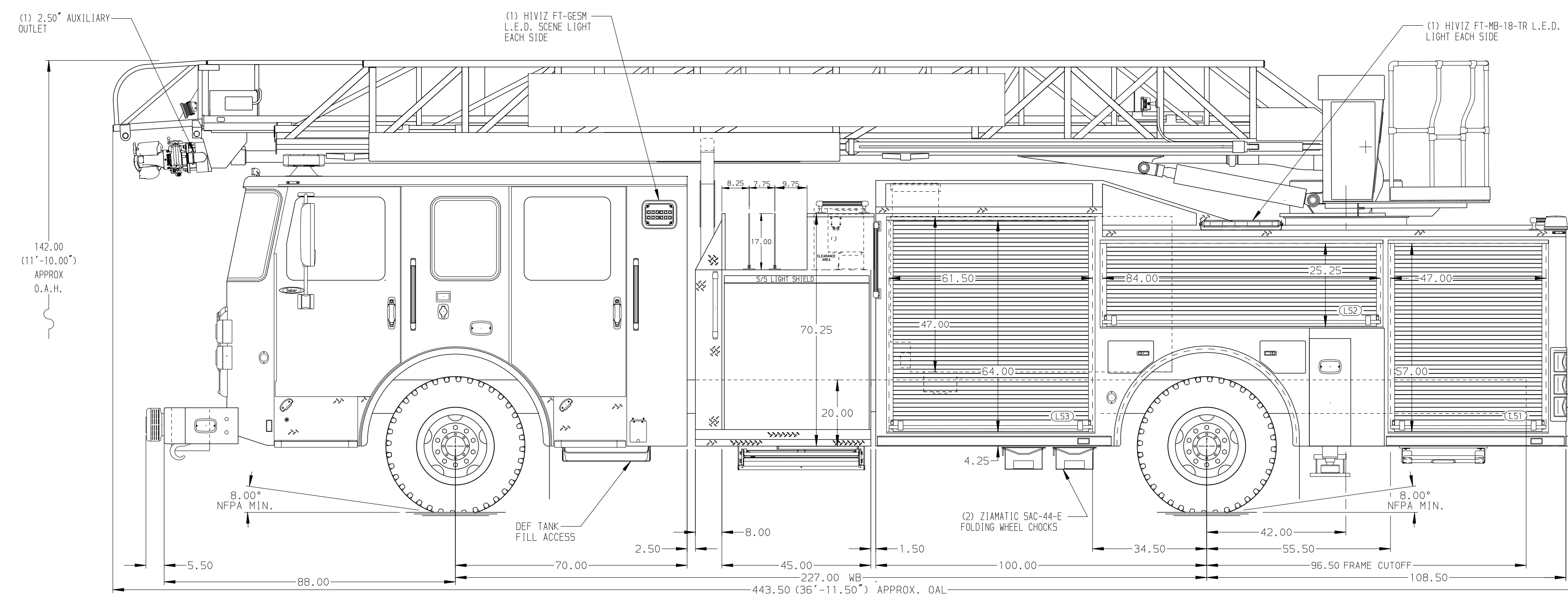


BODY	WATER TANK
75' HAL Aluminum Body	500 Gallon Poly Water Tank
COMPT, LEFT SIDE FRONT	Foam System
Full Height RollUp Forward	Husky 3 Single Agent Foam System
COMPT, LEFT SIDE REAR	Foam Cell
Full Height RollUp Rearward	20 Gallon Foam Cell, Non-Reduced Water
COMPT, RIGHT SIDE FRONT	
Full Height RollUp Forward	
COMPT, RIGHT SIDE REAR	
Full Height RollUp Rearward	



CHASSIS Saber FR Chassis ENGINE 510 HP Paccar MX Engine	CAB 7000 Saber Cab BUMPER 19" Extended Painted Steel	AXLE, FRONT, CUSTOM 18,000 Lb Meritor Axle AXLE, REAR 33,500 Lb Meritor Axle	TRANSMISSION Allison 6th Gen, 4000 EVS P	PUMPHOUSE 45" Control Zone Side Mount PUMP 2000 GPM Waterous CSU	CROSSLAYS, 1.50" (2) 1.50" Standard Capacity CROSSLAYS, 2.50" (1) 2.50" Standard Capacity	SPEEDLAYS Speedlays Not Required GENERATOR Generator Not Required						
--	---	---	--	---	--	--	--	--	--	--	--	--

Pierce MANUFACTURING INC.		JOB NO. 41861
		SCALE 1:24 DATE
		DRAWN BY ANZ 160CT23
		CHECKED BY NAK 190CT23
		SHEET SIZE SHEET NO.
		D 1 OF 1

NOTE
DIMENSIONS SHOWN ARE APPROXIMATE AND ARE SUBJECT TO MINOR DEVIATIONS AS MAY OCCUR OR BE NECESSARY IN CONSTRUCTION. MINOR DETAILS NOT SHOWN.

- FIRE RESEARCH 2-WAY INTERCOM
- SHORELINE RECEPTACLE WITH KUSSMALL SUPER AUTO-EJECT LOCATED ON DRIVER SIDE OF THE CAB
- AIR INLET WITH DISCONNECT COUPLING IN THE DRIVER SIDE STEPPED
- BATTERY CHARGER LOCATED BEHIND DRIVER SEAT
- BATTERY CHARGE INDICATOR LOCATED ON DRIVER SIDE OF THE CAB
- DUAL L.E.D. LIGHT STRIPS LOCATED IN HOSE BED
- FIVE ADJUSTABLE SHELVES IN COMPARTMENTS PER ORDER
- FOUR FLOOR MOUNTED SLIDE-OUT TRAYS LOCATED IN COMPARTMENTS PER ORDER
- 9.00" AERIAL LIMITED RETRACTION
- ONE ALUMINUM SWING-OUT TOOLBOARD LOCATED IN COMPARTMENT PER ORDER
10. 1.50" RAISED AERIAL PEDESTAL
- 1500 GPM HIGH FLOW WATERWAY
- LIFTING EYE RESCUE ATTACHMENT AT AERIAL TIP

CHASSIS DATA	TITLE	75 AERIAL LADDER & BODY ASSEMBLY (HAL)
MAKE	FOR	PIERCE FIELD UNIT APPLETON, WI
PIERCE	DWG NO.	41861AD
MODEL		
SABER FR		
REV	DATE	BY CH